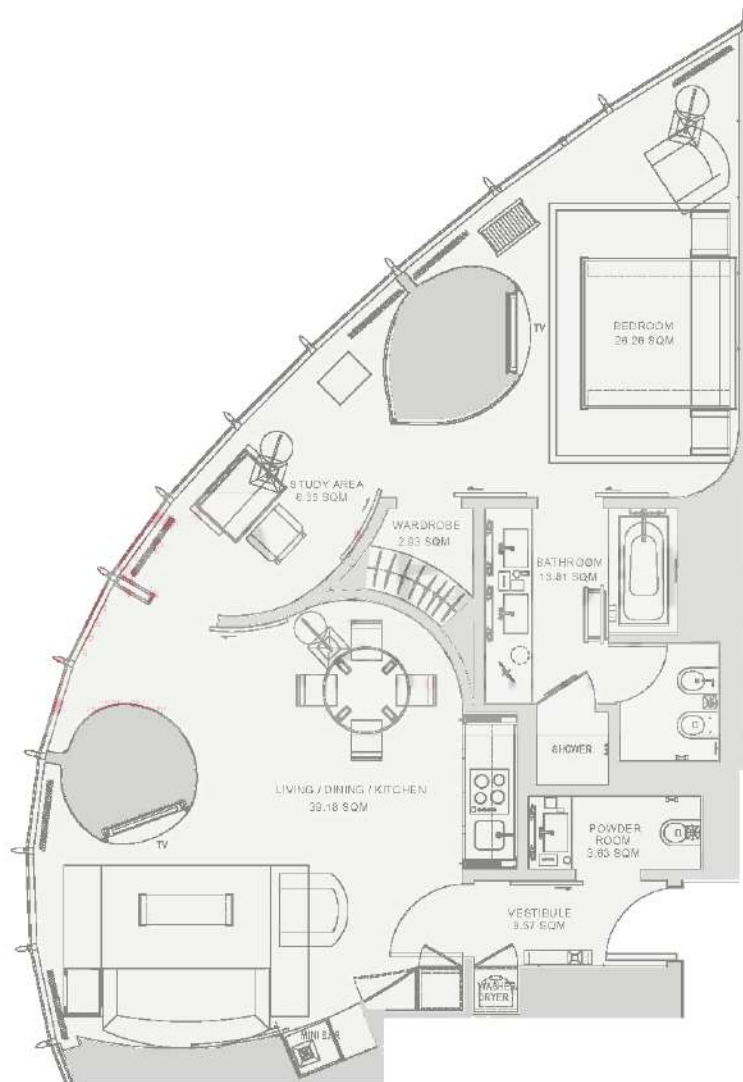


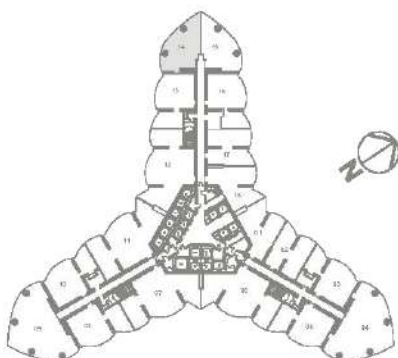
Two Bedroom Suite 14

Total Area
 101.73 SQM
 1,095 SQFT



Burj Dubai

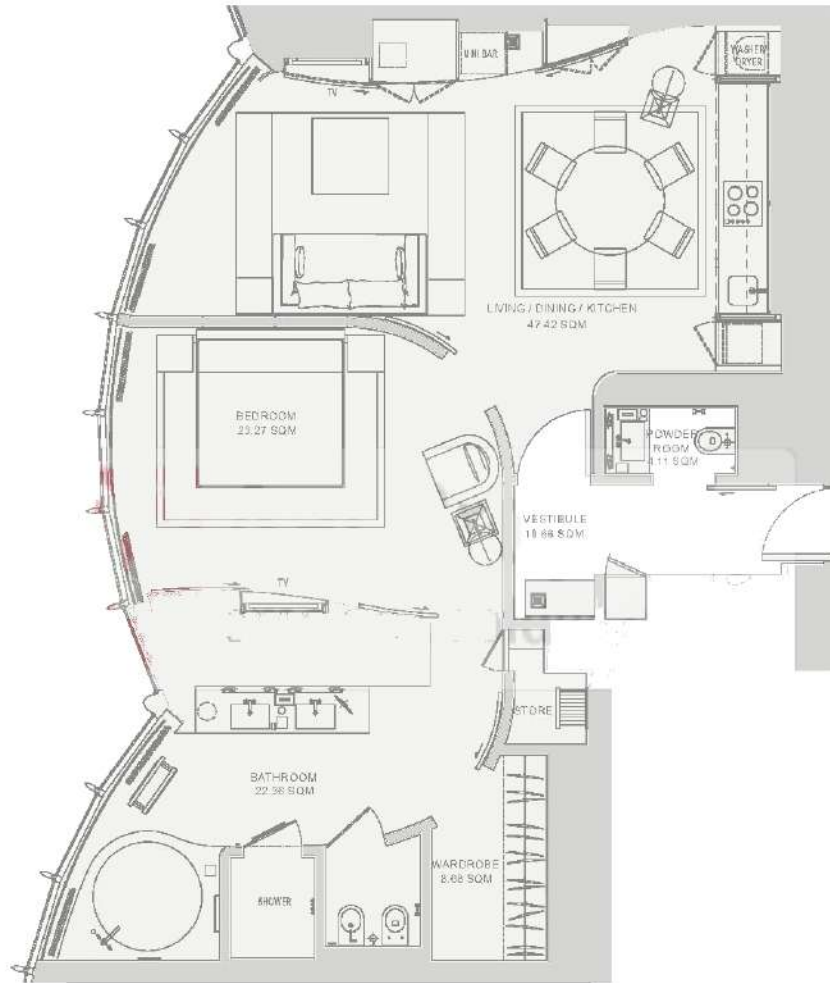
Typical floor levels
 9 to 16



- Note**
1. Calculation of sale area is measured in metric as the area bounded by the center line of demarcation or party walls separating one unit from another unit, the exterior walls, and the exterior surface of the corridor wall enclosing and abutting the unit.
 2. All materials, dimensions, drawings, features and amenities are approximate at the time of printing. Information subject to change without notice.
 3. Actual sale area may vary from stated area. Drawings not to scale. R&FO. The developer reserves the right to make variations.
 4. The developer reserves the right to make variations to the floor plans and any features and amenities mentioned in this brochure.

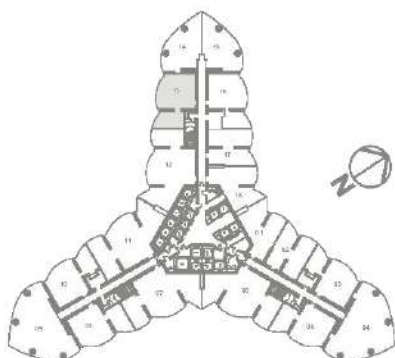
One Bedroom Suite 13

Total Area
 116.50 SQM
 1,254 SQFT



Burj Dubai

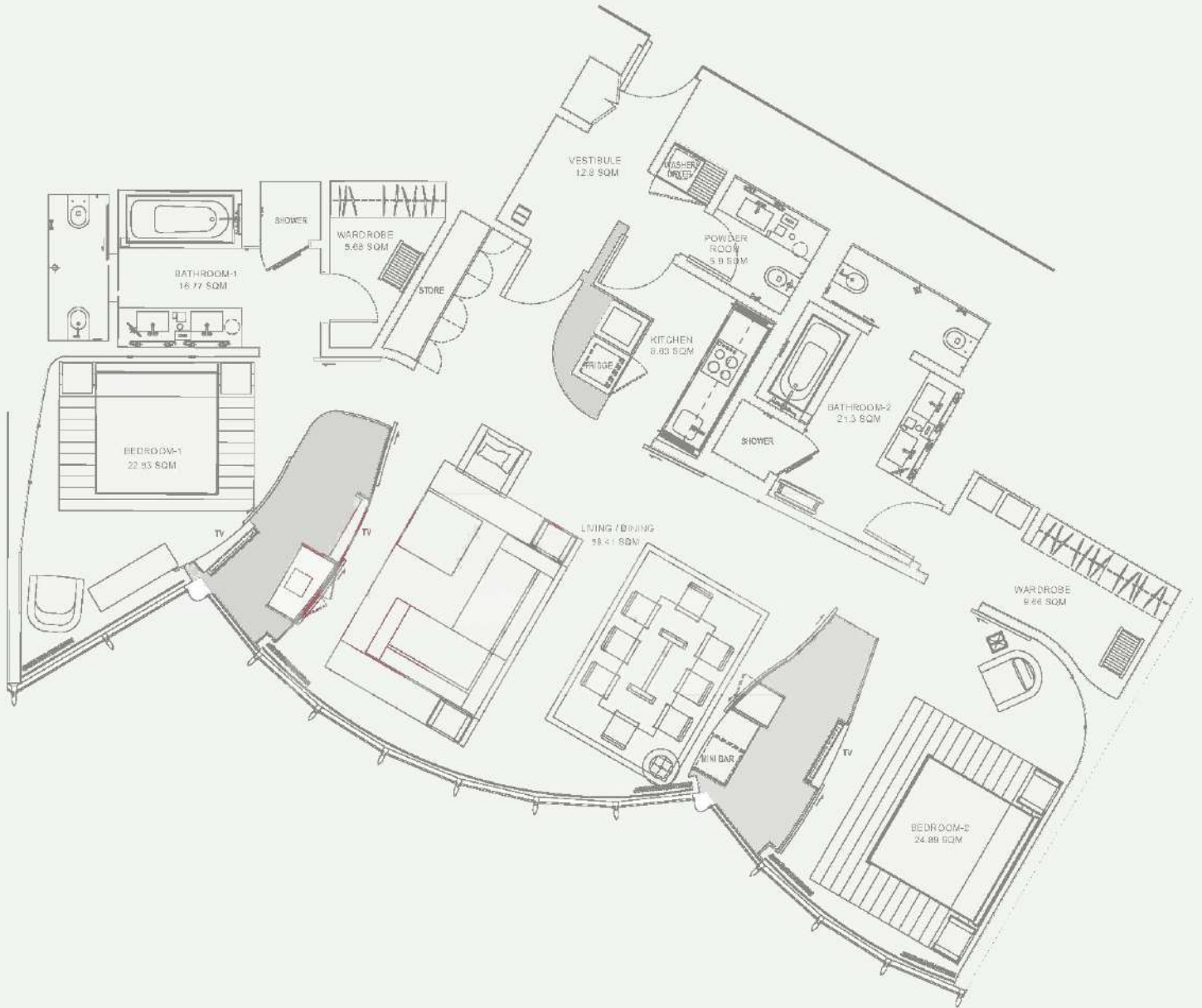
Typical floor levels
 9 to 16



- Note**
1. Calculation of sale area is measured in metric as the area bounded by the center line of demarcation or party walls separating one unit from another unit, the exterior walls, and the exterior surface of the corridor well enclosing and abutting the unit.
 2. All materials, dimensions, drawings, fixtures and amenities are approximate at the time of printing. Information subject to change without notice.
 3. Actual sale area may vary from stated area. Drawings not to scale R&FO. The developer reserves the right to make alterations.
 4. The developer reserves the right to make revisions to the floor plans and any fixtures and amenities mentioned in this brochure.

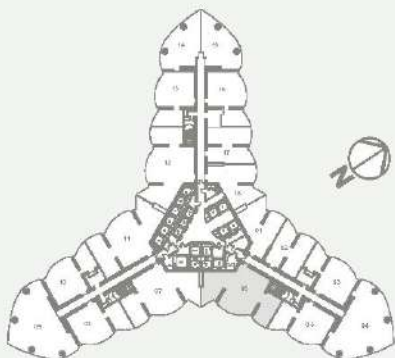
Two Bedroom Suite 06

Total Area
187.57 SQM
2,019 SQFT



Burj Dubai

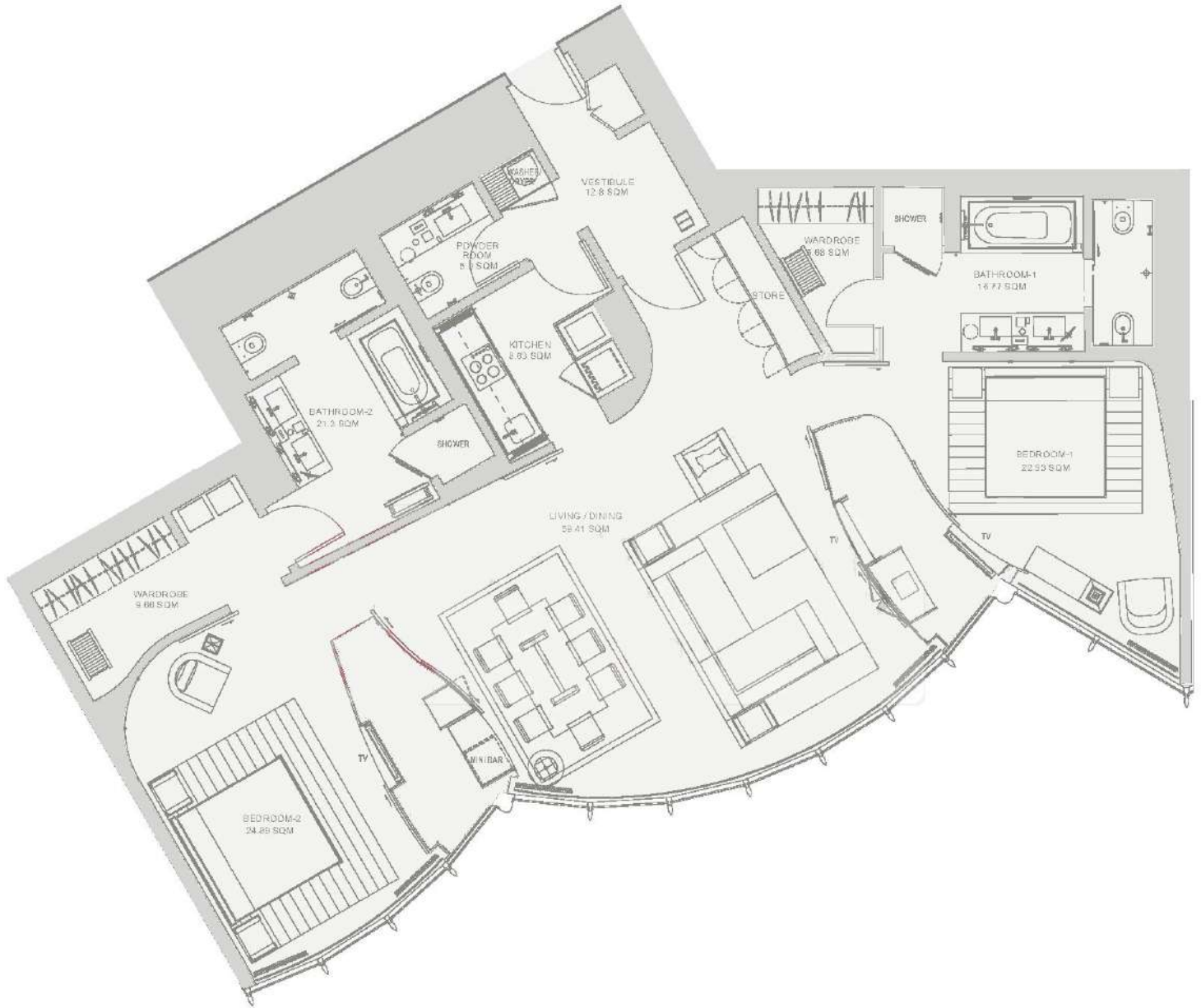
Typical floor levels
9 to 16



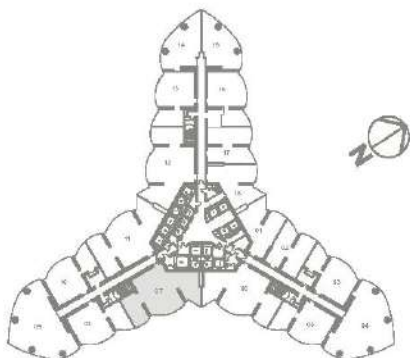
- Note**
1. Calculation of sale area is measured in metric as the area bounded by the center line of demarcation or party walls separating one unit from another unit, the exterior walls, and the exterior surfaces of the corridor well enclosing and abutting the unit.
 2. All materials, dimensions, drawings, finishes and amenities are approximate at the time of printing. Information subject to change without notice.
 3. Actual sale area may vary from stated area. Drawings not to scale R&FO. The developer reserves the right to make revisions.
 4. The developer reserves the right to make revisions to the floor plans and any finishes and amenities mentioned in this brochure.

Two Bedroom Suite 07

Total Area
187.57 SQM
2,019 SQFT



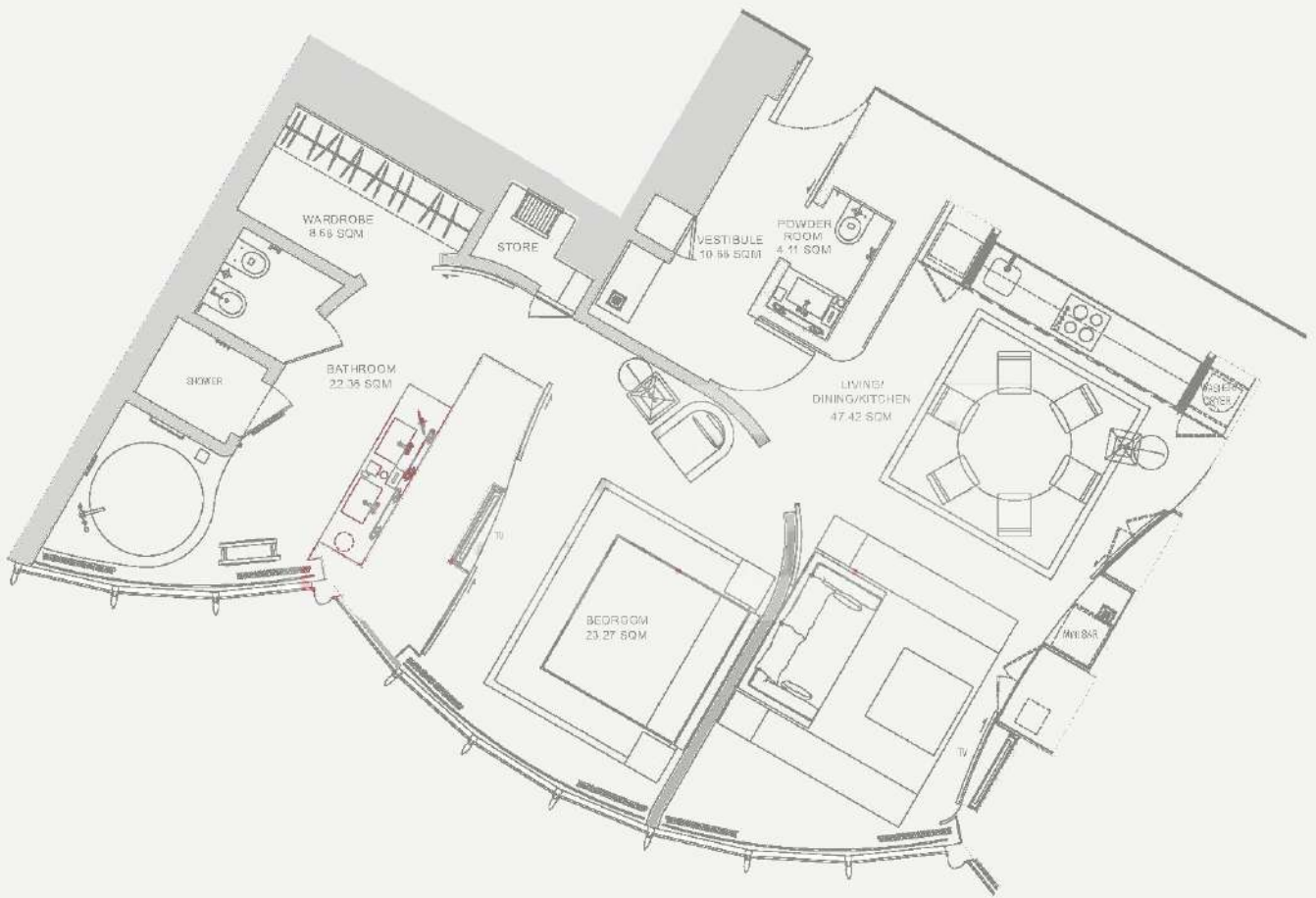
Burj Dubai Typical floor levels 9 to 16



- Note**
1. Calculation of sale area is measured in metric as the area bounded by the center line of demarcation or party walls separating one unit from another unit, the exterior walls, and the exterior surfaces of the corridor well enclosing and abutting the unit.
 2. All materials, dimensions, drawings, features and amenities are approximate at the time of printing. Information subject to change without notice.
 3. Actual sale area may vary from stated area. Drawings not to scale. R&O. The developer reserves the right to make variations.
 4. The developer reserves the right to make variations to the floor plans and any features and amenities mentioned in this brochure.

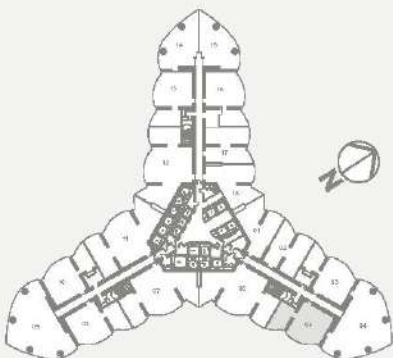
One Bedroom Suite 05

Total Area
 116.50 SQM
 1,254 SQFT



Burj Dubai

Typical floor levels
 9 to 16



- Note**
1. Calculation of sale area is measured in metric as the area bounded by the center line of demarcation or party walls separating one unit from another unit, the exterior walls, and the exterior surfaces of the corridor wall enclosing and abutting the unit.
 2. All materials, dimensions, drawings, finishes and amenities are approximate at the time of printing. Information subject to change without notice.
 3. Actual sale area may vary from stated area. Drawings not to scale R&FO. The developer reserves the right to make revisions.
 4. The developer reserves the right to make revisions to the floor plans and any fixtures and amenities mentioned in this brochure.

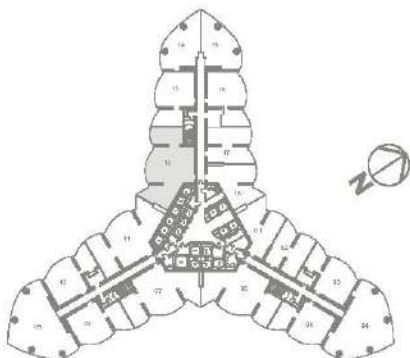
Two Bedroom Suite 12

Total Area
187.57 SQM
2,019 SQFT



Burj Dubai

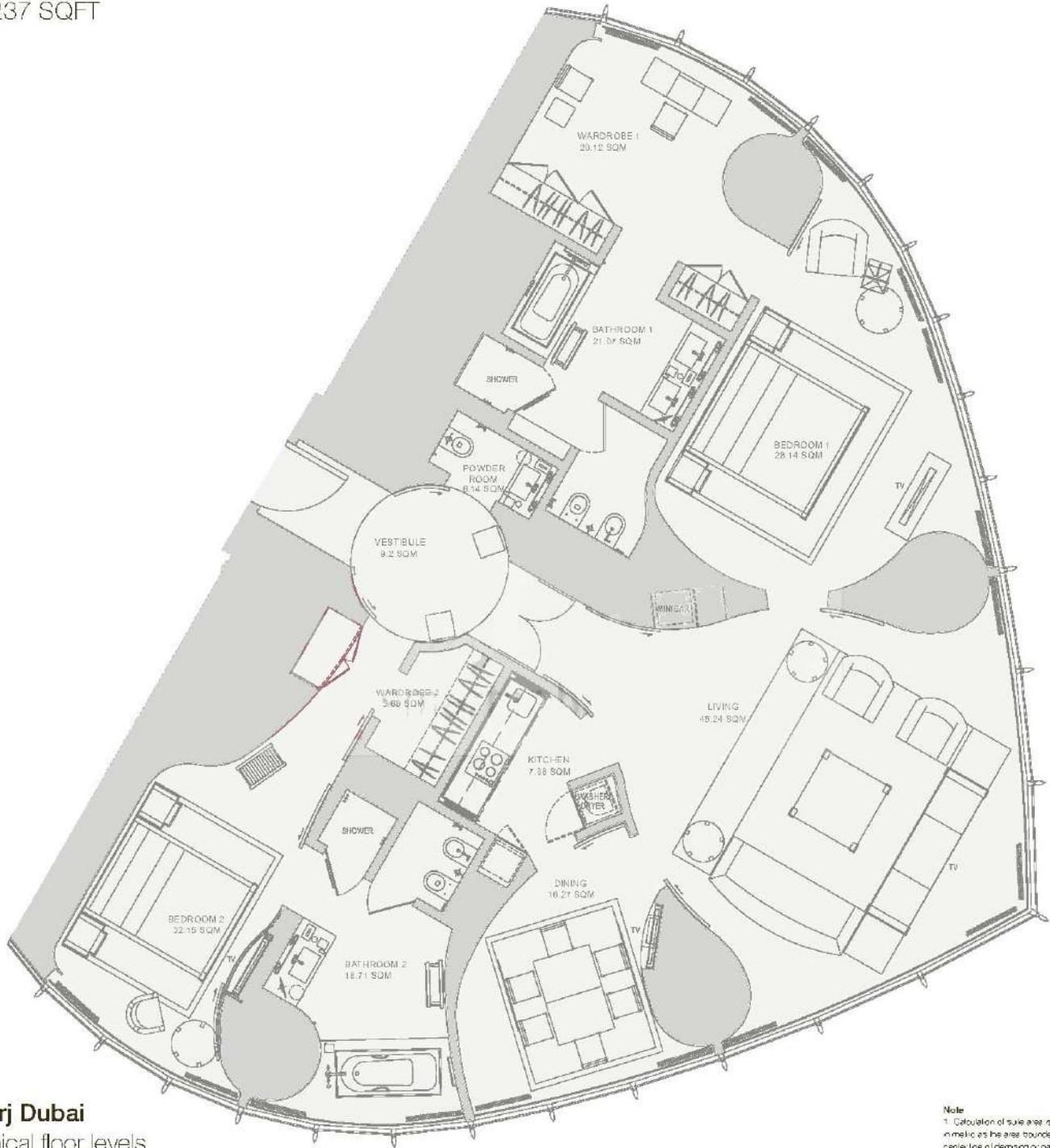
Typical floor levels
9 to 16



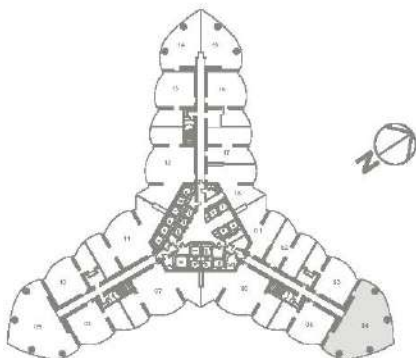
- Note**
1. Calculation of sale area is measured in metric as the area bounded by the center line of demising or party walls separating one unit from another unit, the exterior walls, and the exterior surfaces of the corridor wall enclosing and abutting the unit.
 2. All materials, dimensions, drawings, features and amenities are approximate at the time of giving information subject to change without notice.
 3. Actual sale area may vary from stated area. Drawings not to scale R&O. The developer reserves the right to make variations.
 4. The developer reserves the right to make variations to the floor plans and any features and amenities mentioned in this brochure.

Two Bedroom Suite 04

Total Area
207.80 SQM
2,237 SQFT



Burj Dubai Typical floor levels 9 to 16



- Note**
1. Calculation of sale area is measured in metric as the area bounded by the center line of demarcation or party walls separating one unit from another unit, the exterior walls, and the exterior surfaces of the corridor wall enclosing and abutting the unit.
 2. All materials, dimensions, drawings, features and amenities are approximate at the time of printing. Information subject to change without notice.
 3. Actual sale area may vary from stated area. Drawings not to scale. The developer reserves the right to make variations.
 4. The developer reserves the right to make variations to the floor plans and any features and amenities mentioned in this brochure.

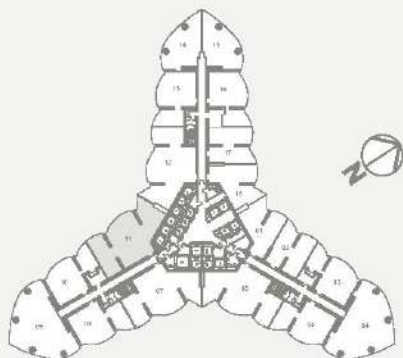
Two Bedroom Suite 11

Total Area
201.41 SQM
2,168 SQFT



Burj Dubai

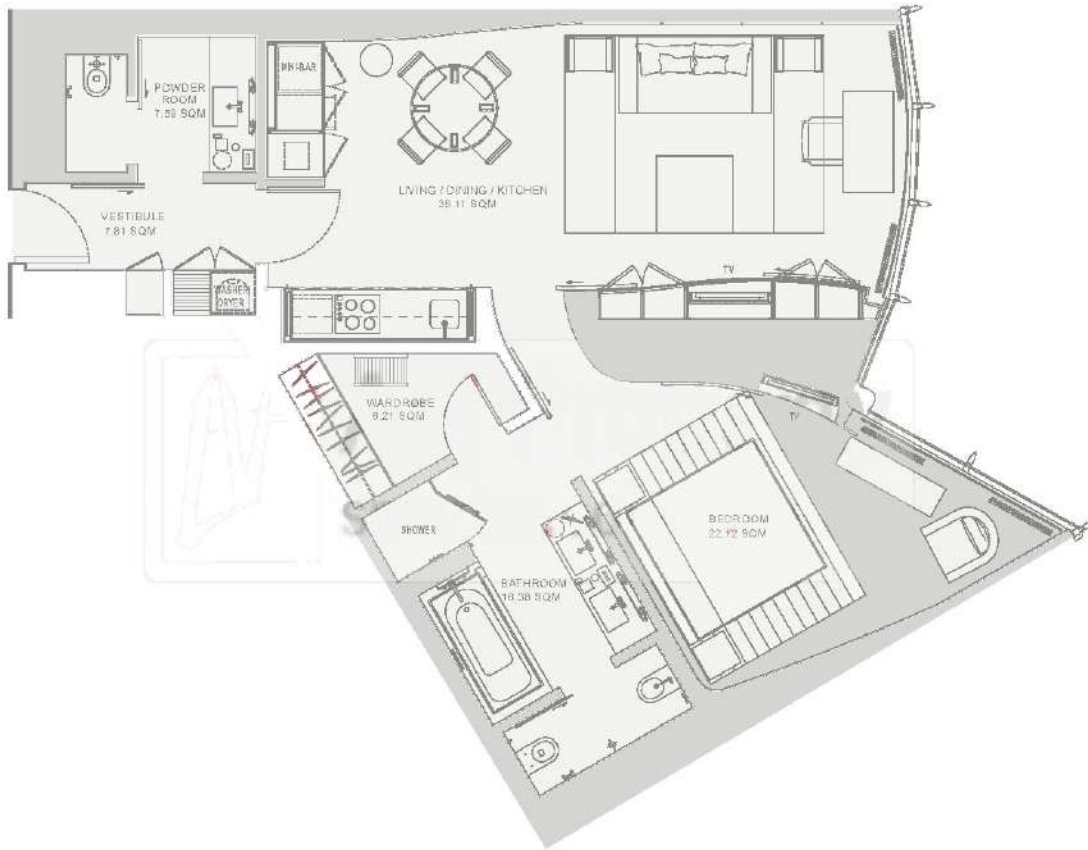
Typical floor levels
9 to 16



- Note**
1. Calculation of sale area is measured in metric as the area bounded by the center line of cladding or party walls separating one unit from another unit, the exterior walls, and the exterior surfaces of the corridor well enclosing and abutting the unit.
 2. All materials, dimensions, drawings, fixtures and amenities are approximate at the time of printing. Information subject to change without notice.
 3. Actual sale area may vary from stated area. Drawings not to scale R&FO. The developer reserves the right to make revisions.
 4. The developer reserves the right to make revisions to the floor plans and any fixtures and amenities mentioned in this brochure.

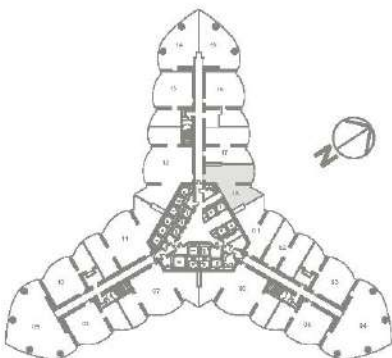
One Bedroom Suite 18

Total Area
 99.22 SQM
 1,068 SQFT



Burj Dubai

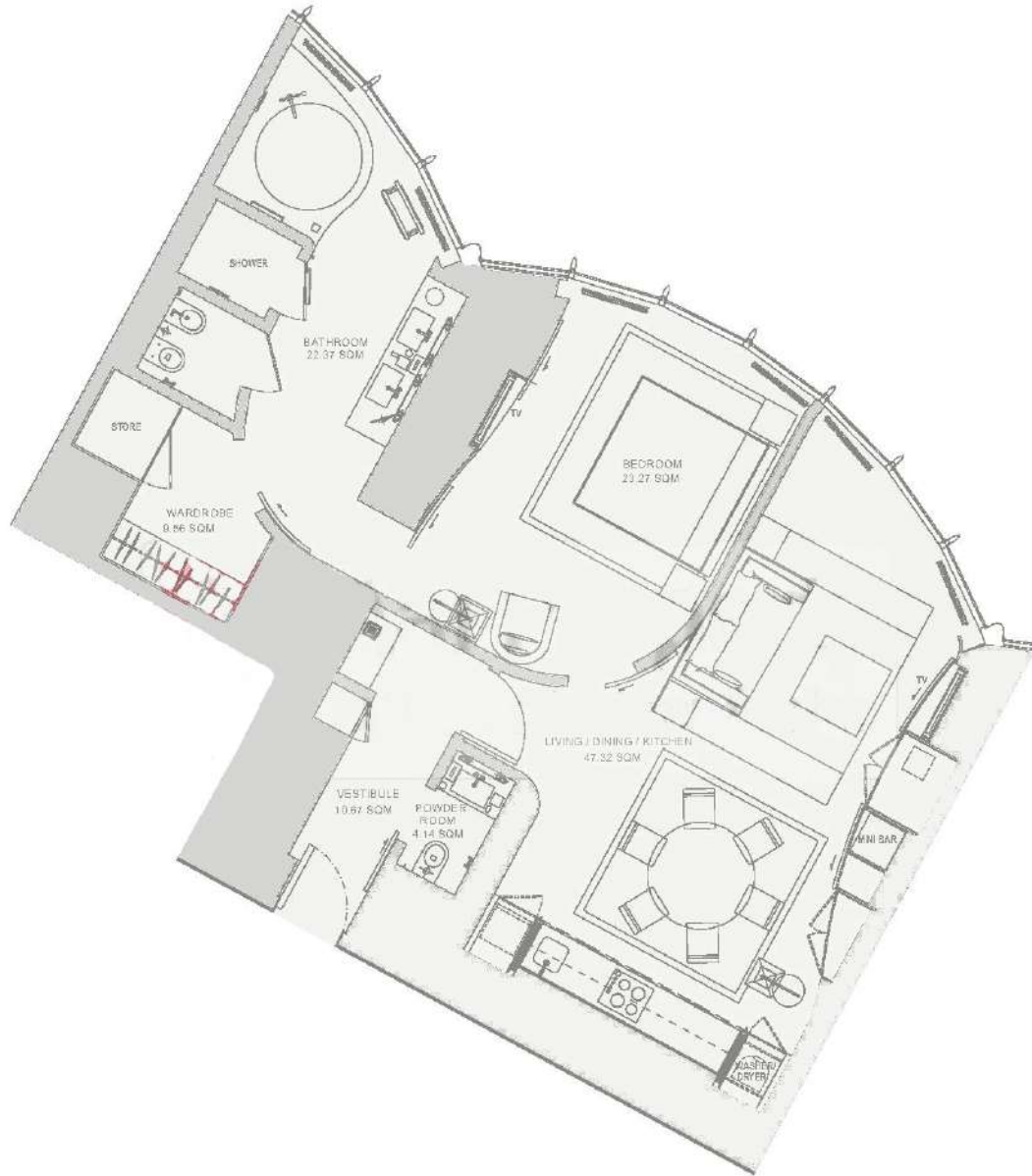
Typical floor levels
 9 to 16



- Note**
1. Calculation of sale area is measured in metric as the area bounded by the center line of demarcation or party walls separating one unit from another unit, the exterior walls, and the exterior surfaces of the corridor wall enclosing and abutting the unit.
 2. All materials, dimensions, drawings, fixtures and amenities are approximate at the time of printing. Information subject to change without notice.
 3. Actual sale area may vary from stated area. Drawings not to scale. R&FO. The developer reserves the right to make variations.
 4. The developer reserves the right to make variations to the floor plans and any fixtures and amenities mentioned in this brochure.

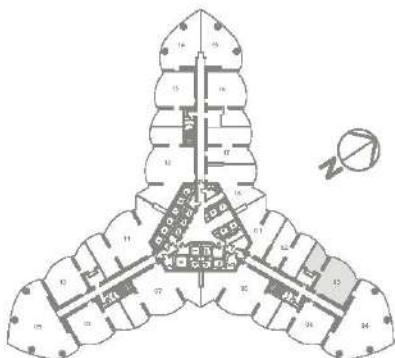
One Bedroom Suite 03

Total Area
117.33 SQM
1,263 SQFT



Burj Dubai

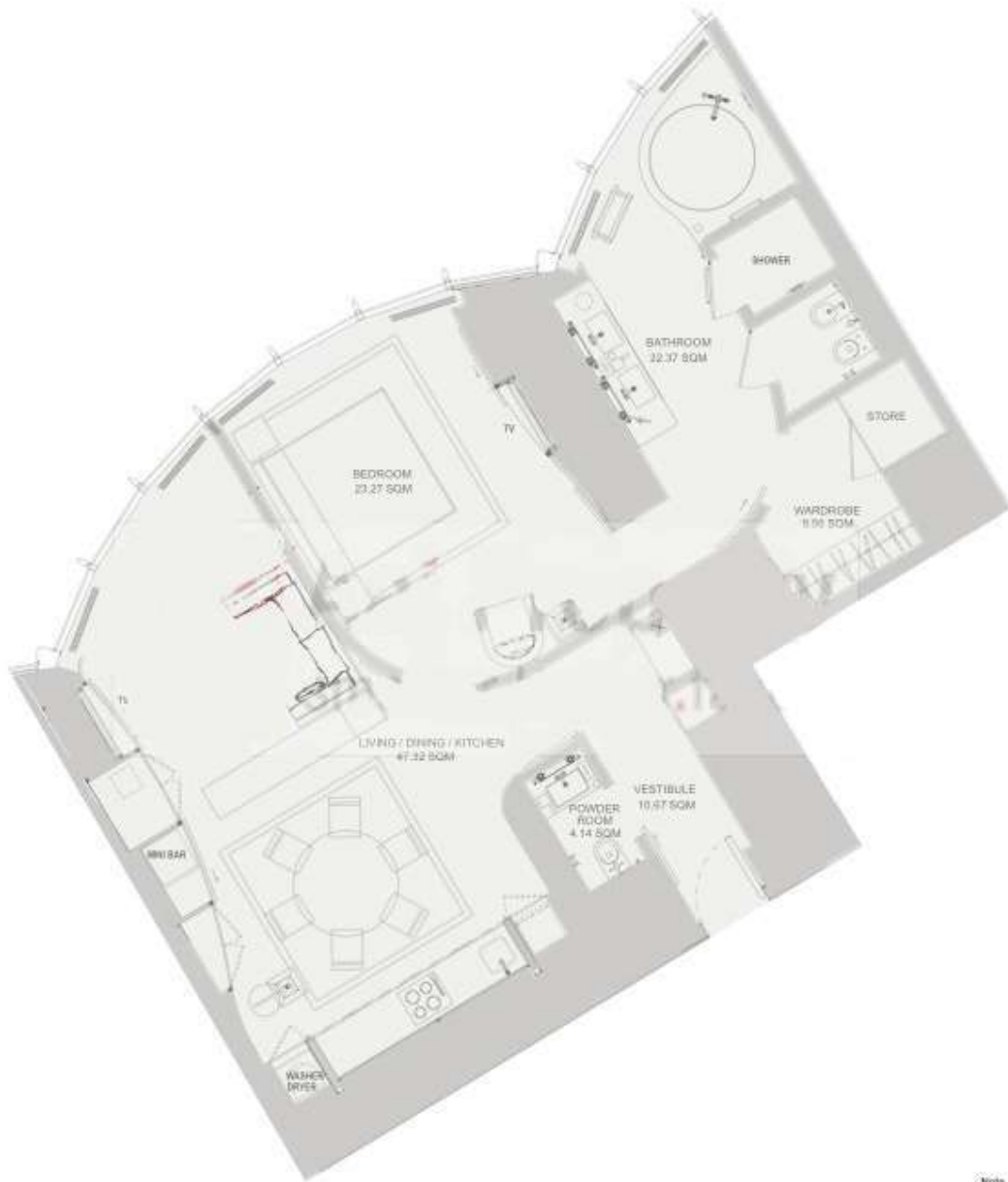
Typical floor levels
9 to 16



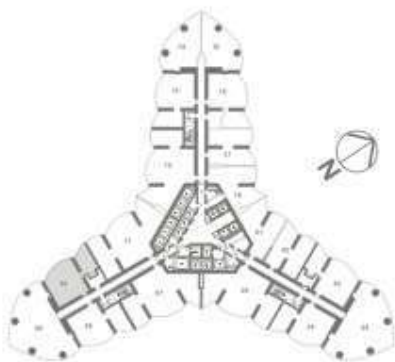
- Note**
1. Calculation of sale area is measured in metric as the area bounded by the center line of demising or party walls separating one unit from another unit, the exterior walls, and the exterior surfaces of the corridor wall enclosing and abutting the unit.
 2. All materials, dimensions, drawings, features and amenities are approximate at the time of printing. Information subject to change without notice.
 3. Actual sale area may vary from stated area. Drawings not to scale. R&FO. The developer reserves the right to make revisions.
 4. The developer reserves the right to make revisions to the floor plans and any features and amenities mentioned in this brochure.

One Bedroom Suite 10

Total Area
117.33 SQM
1,263 SQFT



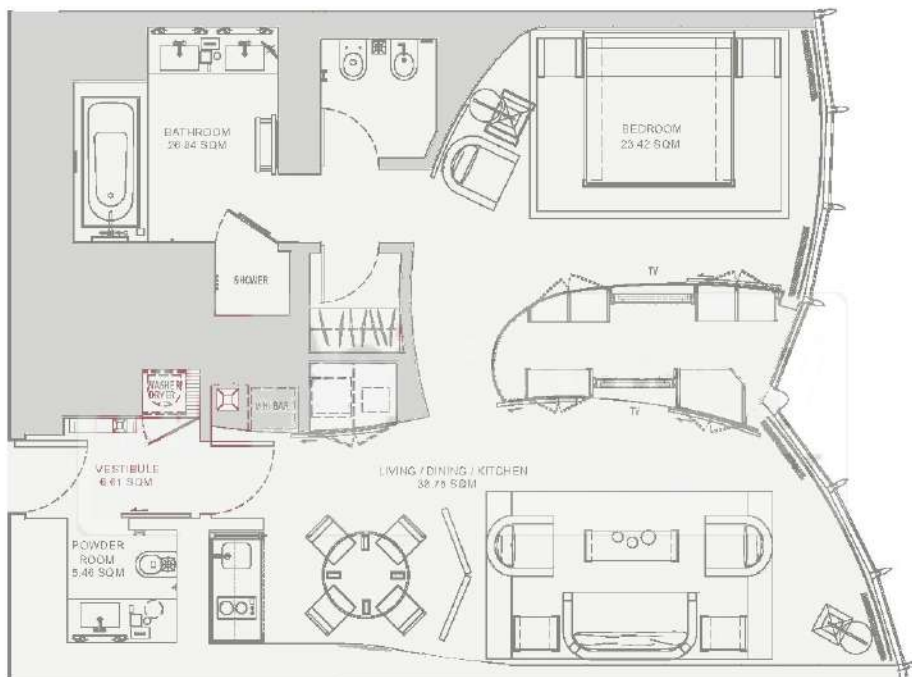
Burj Dubai Typical floor levels 9 to 16



- Note**
1. Calculation of suite areas is measured in-marks as the area bounded by the center line of masonry or party walls, depending on unit from another unit, the exterior walls, and the exterior surface of the corridor wall enclosing and adjoining the unit.
 2. All materials, dimensions, drawings, fixtures and finishes are approximate at the time of printing; information subject to change without notice.
 3. Actual suite area may vary from stated area. Drawings not to scale. E&OE. The developer reserves the right to make revisions.
 4. The developer reserves the right to make revisions to the floor plans and any fixtures and finishes mentioned in this brochure.

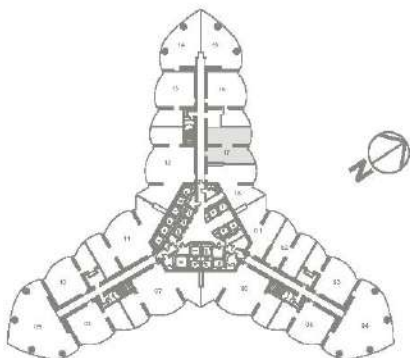
One Bedroom Suite 17

Total Area
101.08 SQM
1,088 SQFT



Burj Dubai

Typical floor levels
9 to 16



- Note**
1. Calculation of sale area is measured in metric as the area bounded by the center line of demarcation or party walls separating one unit from another unit, the exterior walls, and the exterior surfaces of the corridor wall enclosing and abutting the unit.
 2. All materials, dimensions, drawings, features and amenities are approximate at the time of printing. Information subject to change without notice.
 3. Actual sale area may vary from stated area. Drawings not to scale. R&PO. The developer reserves the right to make variations.
 4. The developer reserves the right to make variations to the floor plans and any features and amenities mentioned in this brochure.

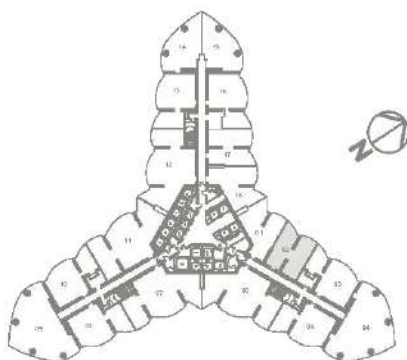
One Bedroom Suite 02

Total Area
101.08 SQM
1,088 SQFT



Burj Dubai

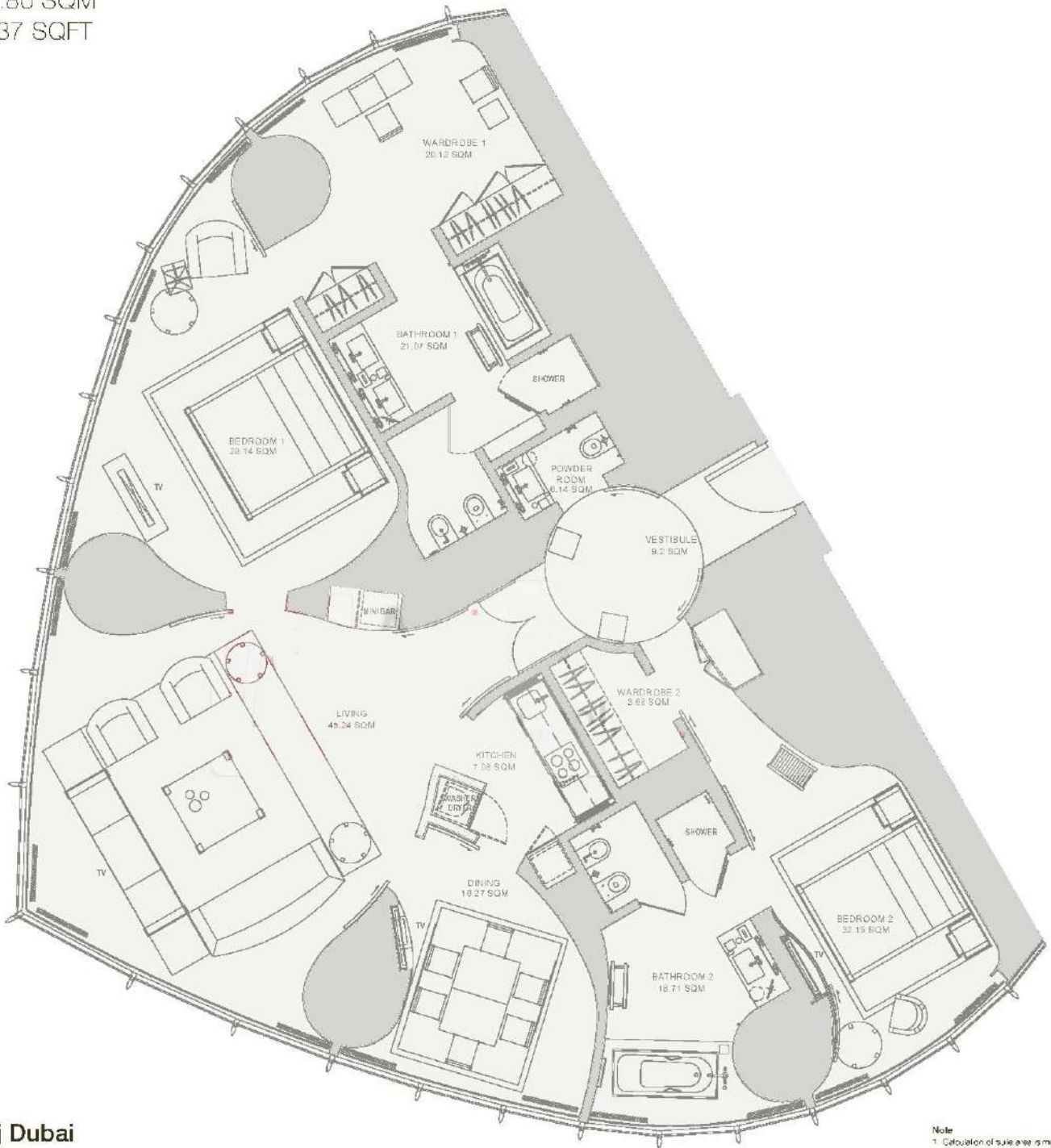
Typical floor levels
9 to 16



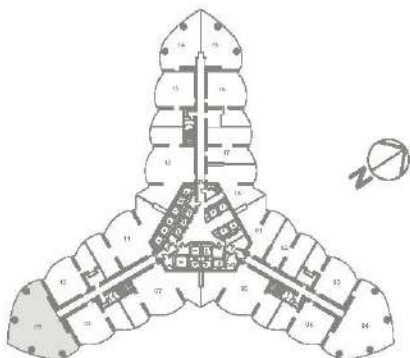
- Note**
1. Calculation of sale area is measured in metric as the area bounded by the center line of demarcation or party walls separating one unit from another unit, the exterior walls, and the exterior surface of the corridor wall enclosing and abutting the unit.
 2. All materials, dimensions, drawings, fixtures and amenities are approximate at the time of printing. Information subject to change without notice.
 3. Actual sale area may vary from stated area. Drawings not to scale. R&O. The developer reserves the right to make alterations.
 4. The developer reserves the right to make revisions to the floor plans and any fixtures and amenities mentioned in this brochure.

Two Bedroom Suite 09

Total Area
207.80 SQM
2,237 SQFT



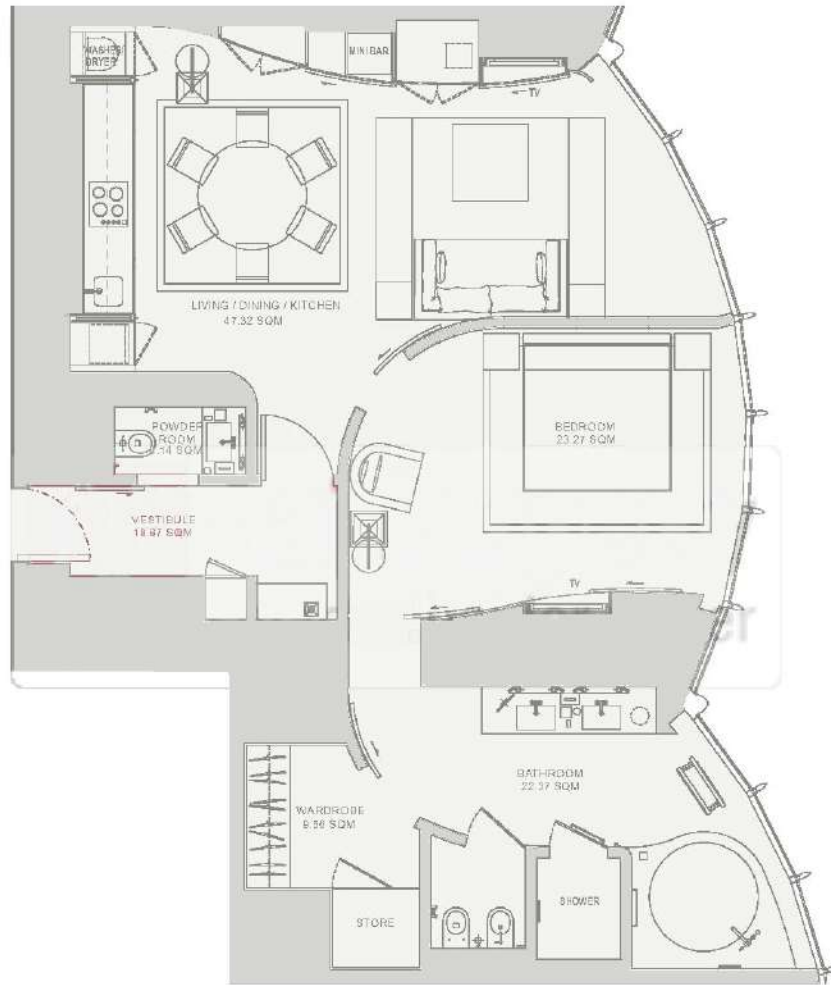
Burj Dubai Typical floor levels 9 to 16



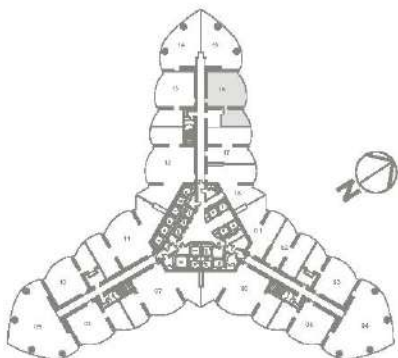
- Note**
1. Calculation of sale area is measured in metric as the area bounded by the center line of demarcation or party walls separating one unit from another unit, the exterior walls, and the exterior surfaces of the corridor wall enclosing and abutting the unit.
 2. All materials, dimensions, drawings, features and amenities are approximate at the time of printing. Information subject to change without notice.
 3. Actual sale area may vary from stated area. Drawings not to scale. R&FO. The developer reserves the right to make variations.
 4. The developer reserves the right to make variations to the floor plans and any features and amenities mentioned in this brochure.

One Bedroom Suite 16

Total Area
 117.33 SQM
 1,263 SQFT



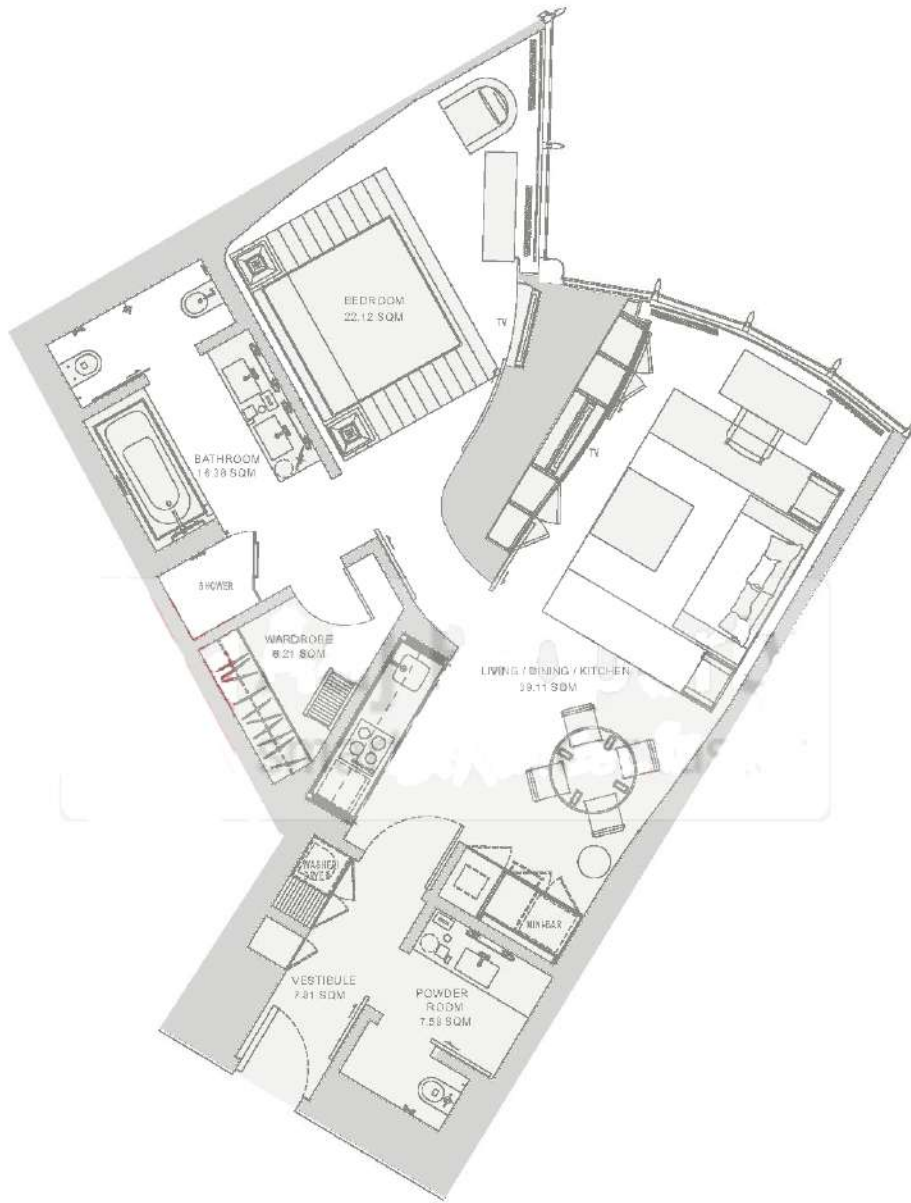
Burj Dubai Typical floor levels 9 to 16



- Note**
1. Calculation of sale area is measured in metric as the area bounded by the center line of demarcation or party walls separating one unit from another unit, the exterior walls, and the exterior surfaces of the corridor wall enclosing and abutting the unit.
 2. All materials, dimensions, drawings, features and amenities are approximate at the time of printing. Information subject to change without notice.
 3. Actual sale area may vary from stated area. Drawings not to scale. R&FO. The developer reserves the right to make variations.
 4. The developer reserves the right to make variations to the floor plans and any features and amenities mentioned in this brochure.

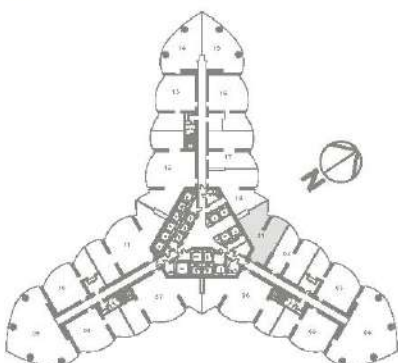
One Bedroom Suite 01

Total Area
 99.22 SQM
 1,068 SQFT



Burj Dubai

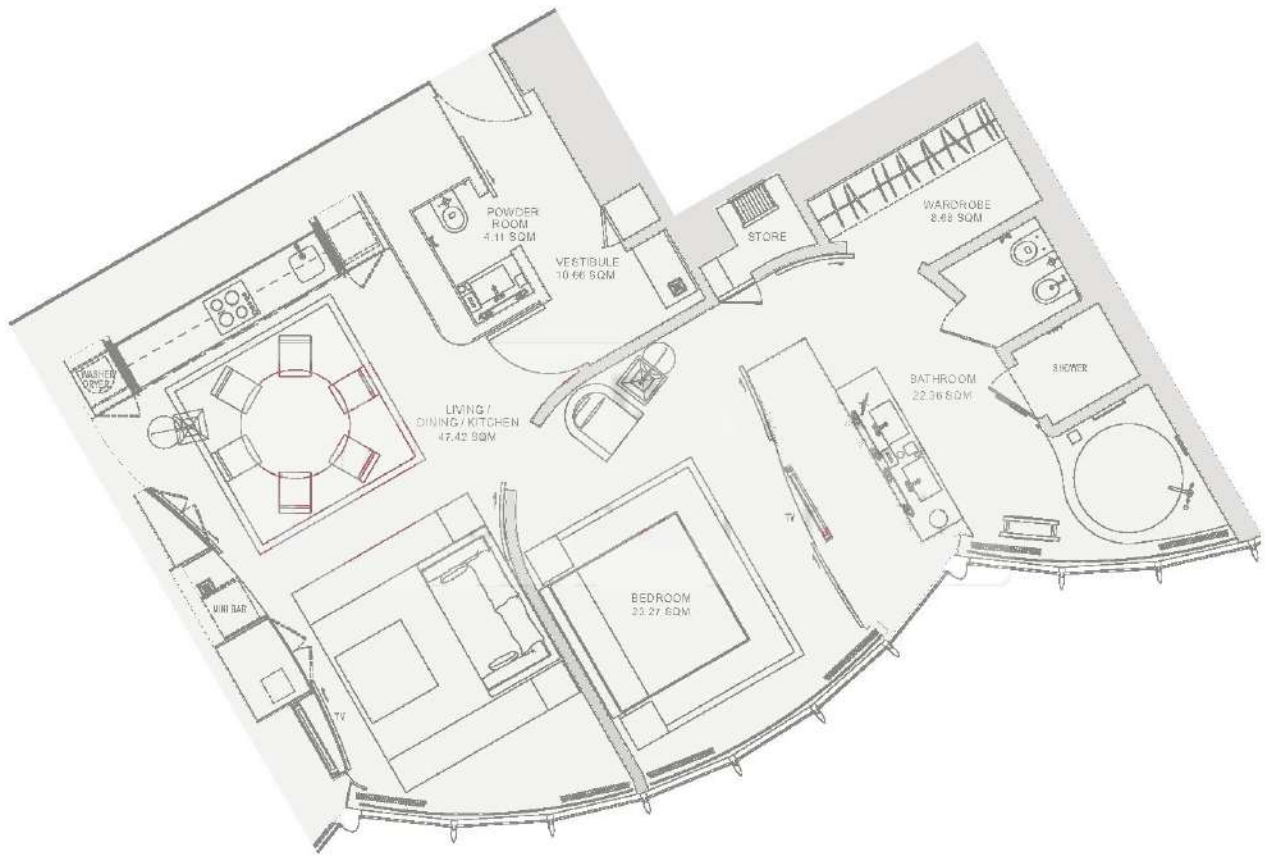
Typical floor levels
 9 to 16



- Note**
1. Calculation of sale area is measured in metric as the area bounded by the center line of demarcation or party walls separating one unit from another unit, the exterior walls, and the exterior surfaces of the corridor wall enclosing and abutting the unit.
 2. All materials, dimensions, drawings, features and amenities are approximate at the time of drawing. Information subject to change without notice.
 3. Actual sale area may vary from stated area. Drawings not to scale. R&FO. The developer reserves the right to make variations.
 4. The developer reserves the right to make variations to the floor plans and any features and amenities mentioned in this brochure.

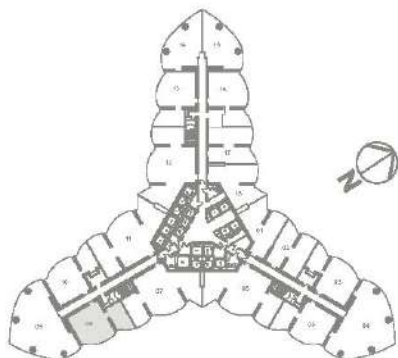
One Bedroom Suite 08

Total Area
116.50 SQM
1,254 SQFT



Burj Dubai

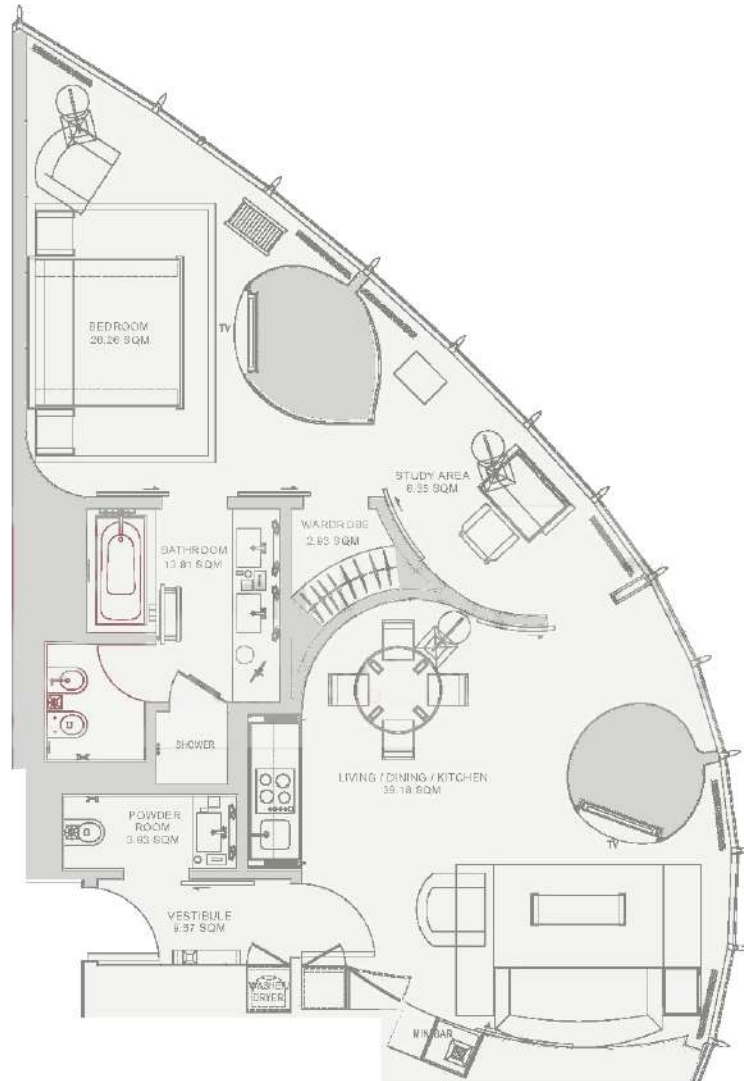
Typical floor levels
9 to 16



- Note**
1. Calculation of sale area is measured in metric as the area bounded by the center line of demarcation or party walls separating one unit from another unit, the exterior walls, and the exterior surfaces of the corridor wall enclosing and abutting the unit.
 2. All materials, dimensions, drawings, fixtures and amenities are approximate at the time of printing. Information subject to change without notice.
 3. Actual sale area may vary from stated area. Drawings not to scale. R&O. The developer reserves the right to make variations.
 4. The developer reserves the right to make variations to the floor plans and any fixtures and amenities mentioned in this brochure.

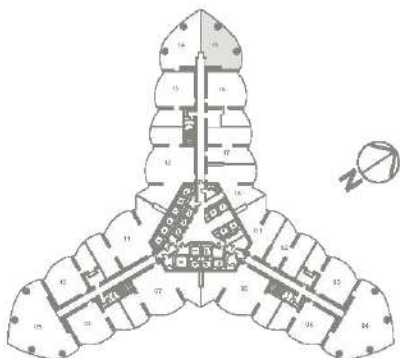
Two Bedroom Suite 15

Total Area
101.73 SQM
1,095 SQFT



Burj Dubai

Typical floor levels
9 to 16



- Note**
1. Calculation of sale area is measured in metric as the area bounded by the center line of demarcation or party walls separating one unit from another unit, the exterior walls, and the exterior surface of the corridor well enclosing and abutting the unit.
 2. All materials, dimensions, drawings, fixtures and amenities are approximate at the time of giving information subject to change without notice.
 3. Actual sale area may vary from stated area. Drawings not to scale R&FO. The developer reserves the right to make variations.
 4. The developer reserves the right to make variations to the floor plans and any fixtures and amenities mentioned in this brochure.