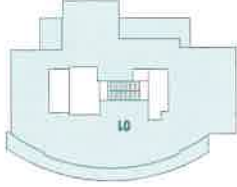


The Residences **Penthouses**
Floorplans

NOTE:- 1. All room dimensions are in imperial and measured to structural elements and exclude wall finishes and construction tolerances. 2. All dimensions have been provided by our consultant architects. 3. All materials, dimensions and drawings are approximate information subject to change without notice. 4. Actual suite area may vary from the stated area. Drawings not to scale E&O. The developer reserves the right to make revisions. 5. Calculation of suite area is measured as the area bounded by the center line of demising or party walls separating one unit from another unit, the exterior surface of all exterior walls, and the exterior surface of the corridor wall enclosing and abutting the unit. 6. Calculation of balcony area is measured as the area bounded by the center lines of demising or party walls separating one unit from another unit, the outermost face of the enclosing guard and the external face of the site abutting the balcony. Columns above this level may reduce in size, while the floors below may increase in size.



q ft
q ft
q ft

Penthouse E1 - 01

Level 28

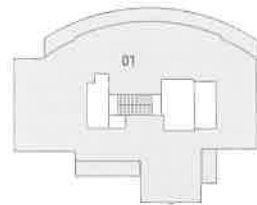
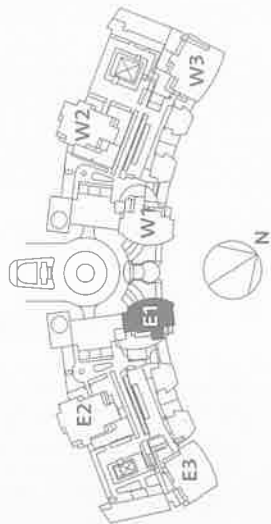
East Tower Suite

4 BEDROOMS

Area Of The Unit = 362.6 sq m / 3,903 sq ft

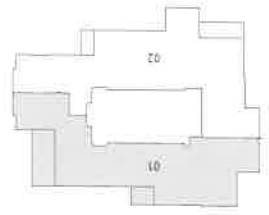
Balcony Area = 66.3 sq m / 714 sq ft

Total Area = 428.9 sq m / 4,617 sq ft



NOTE:- 1. All room dimensions are in imperial and measured to structural elements and exclude wall finishes and construction tolerances. 2. All dimensions have been provided by our consultant architects. Information subject to change without notice. 4. Actual suite area may vary from the stated area. Drawings not to scale. E&EO. The developer reserves the right to make revisions. 5. Calculation of suite area is measured to party walls separating one unit from another unit, the exterior surface of all exterior walls, and the exterior surface of the corridor wall enclosing and abutting the unit. 6. Calculation of balcony area is measured as the separating one unit from another unit, the outermost face of the enclosing guard and the external face of the site abutting the balcony. 7. The units are measured at level 10 in the building. Columns above this level n

NOTE:- 1- All room dimensions are in imperial and measured to structural elements and exclude wall finishes and construction tolerances. **2-** All dimensions have been provided by our consultant architects. **3-** All materials, dimensions and drawings are approximate. Information subject to change without notice. **4-** Actual suite area may vary from the stated area. Drawings not to scale. E&CO. The developer reserves the right to make revisions. **5-** Calculation of site area is measured as the area bounded by the center line of demising or party walls separating one unit from another unit, the exterior surface of all exterior walls, and the exterior surface of the corridor wall enclosing and abutting the unit. **6-** Calculation of balcony area is measured as the area bounded by the center lines of demising or party walls separating one unit from another unit, the outermost face of the enclosing guard and the external face of the site abutting the balcony. **7-** The units are measured at level 10 in the building. Columns above this level may reduce in size, while the floors below may increase in size.



q ft
q ft
q ft

Penthouse E2 - 02

Level 32

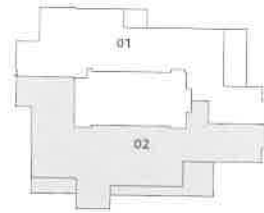
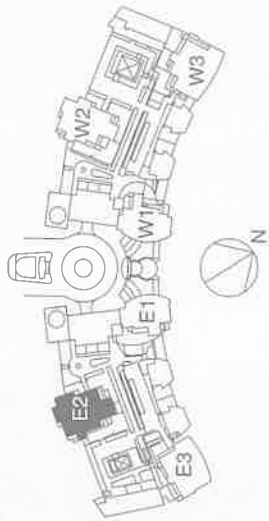
East Tower Suite

4 BEDROOMS

Area Of The Unit = 279.5 sq m / 3,009 sq ft

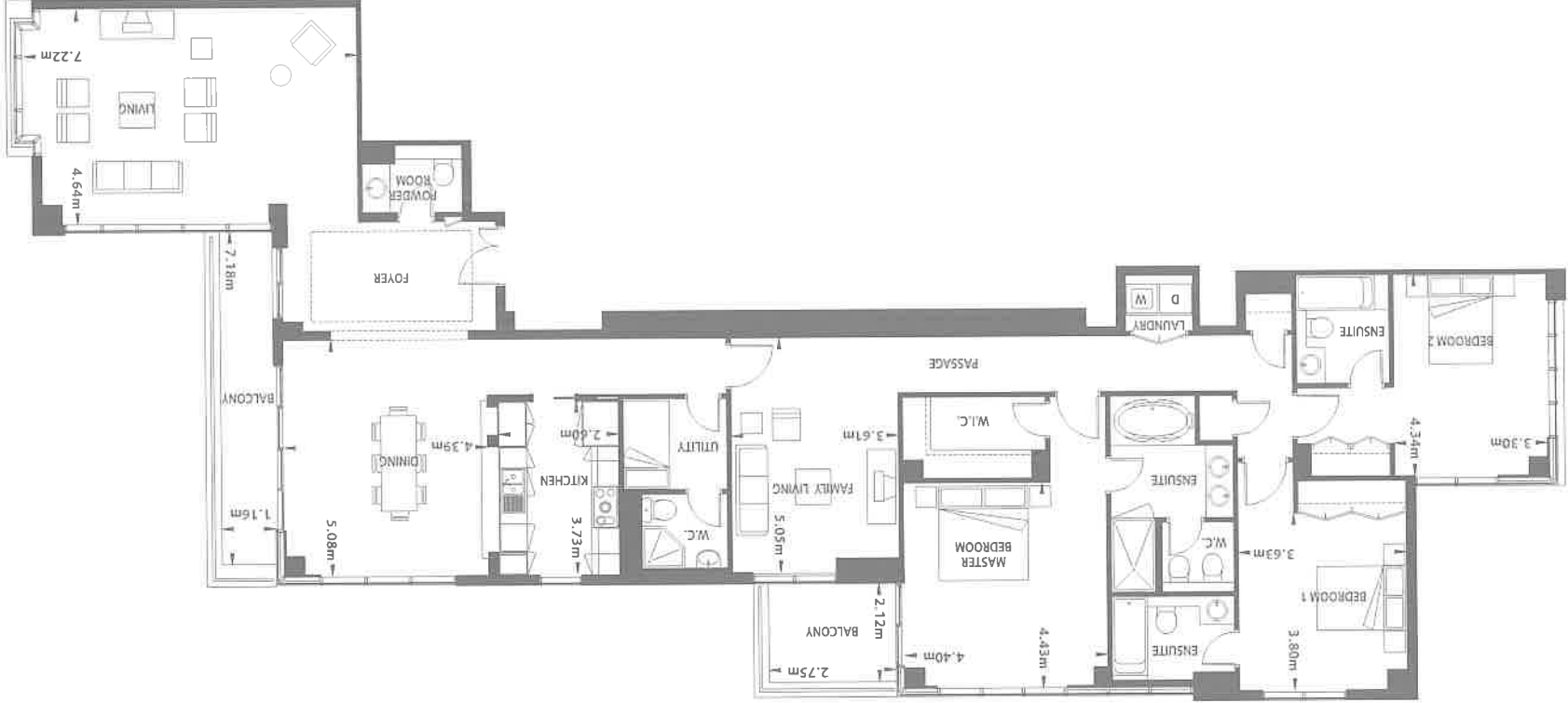
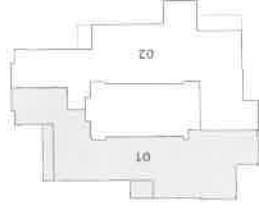
Balcony Area = 43.9 sq m / 472 sq ft

Total Area = 323.4 sq m / 3,481 sq ft



NOTE:- 1. All room dimensions are in imperial and measured to structural elements and exclude wall finishes and construction tolerances. 2. All dimensions have been provided by our consultant architects. 3. Information subject to change without notice. 4. Actual suite area may vary from the stated area. Drawings not to scale E&EO. The developer reserves the right to make revisions. 5. Calculation of suite area is measured as the party walls separating one unit from another unit, the exterior surface of all exterior walls, and the exterior surface of the corridor wall enclosing and abutting the unit. 6. Calculation of balcony area is measured as the separating one unit from another unit, the outermost face of the enclosing guard and the external face of the site abutting the balcony. 7. The units are measured at level 10 in the building. Columns above this level are

NOTE:- 1. All room dimensions are in imperial and measured to structural elements and exclude wall finishes and construction tolerances. 2. All dimensions have been provided by our consultant architects. 3. All materials, dimensions and drawings are approximate. Information subject to change without notice. 4. Actual suite area may vary from the stated area. Drawings not to scale. E&E.C. The developer reserves the right to make revisions. 5. Calculation of suite area is measured as the area bounded by the center line of demising or party walls separating one unit from another unit, the exterior surface of all exterior walls, and the exterior surface of the corridor wall enclosing and abutting the unit. 6. Calculation of balcony area is measured as the area bounded by the center line of demising or party walls separating one unit from another unit, the outermost face of the enclosing guard and the external face of the site abutting the balcony. 7. The units are measured at level 10 in the building. Columns above this level may reduce in size, while the floors below may increase in size.



Penthouse E2 - 02

Level 33

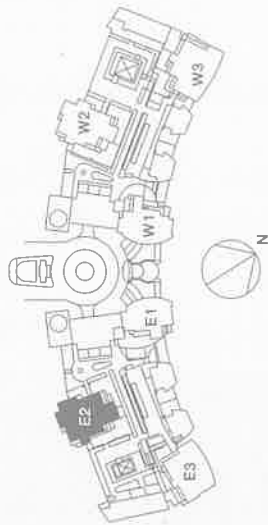
East Tower Suite

4 BEDROOMS

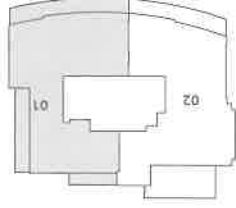
Area Of The Unit = 279.5 sq m / 3,009 sq ft

Balcony Area = 18.9 sq m / 203 sq ft

Total Area = 298.4 sq m / 3,212 sq ft



NOTE:- 1. All room dimensions are in imperial and measured to structural elements and exclude wall finishes and construction tolerances. 2. All dimensions have been provided by our consultant architects. 3. Information subject to change without notice. 4. Actual suite area may vary from the stated area. Drawings not to scale. E&EO. The developer reserves the right to make revisions. 5. Calculation of suite area is measured as the area enclosed by the separating one unit from another unit, the exterior surface of all exterior walls, and the exterior surface of the corridor wall enclosing and abutting the unit. 6. Calculation of balcony area is measured as the area enclosed by the separating one unit from another unit, the outermost face of the enclosing guard and the external face of the site abutting the balcony. 7. The units are measured at level 10 in the building. Columns above this level may



NOTE:- 1. All room dimensions are in imperial and measured to structural elements and exclude wall finishes and construction tolerances. 2. All dimensions have been provided by our consultant architects. 3. All materials, dimensions and drawings are approximate. Information subject to change without notice. 4. Actual suite area may vary from the stated area. Drawings not to scale. E&EO. The developer reserves the right to make revisions. 5. Calculation of suite area is measured as the area bounded by the centre line of demising or party walls separating one unit from another unit, the exterior surface of all exterior walls, and the exterior surface of the corridor wall enclosing and abutting the unit. 6. Calculation of balcony area is measured as the area bounded by the centre lines of demising or party walls separating one unit from another unit, the outermost face of the enclosing guard and the external face of the site abutting the balcony. 7. The units are measured at level 10 in the building. Columns above this level may reduce in size, while the floors below may increase in size.

Penthouse E3 - 02

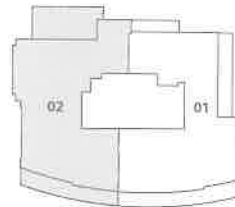
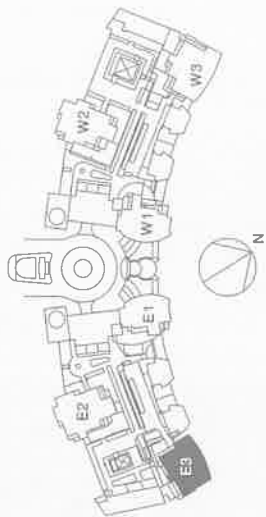
Level 20
East Tower Suite

3 BEDROOMS

Area Of The Unit = 227.3 sq m / 2,447 sq ft

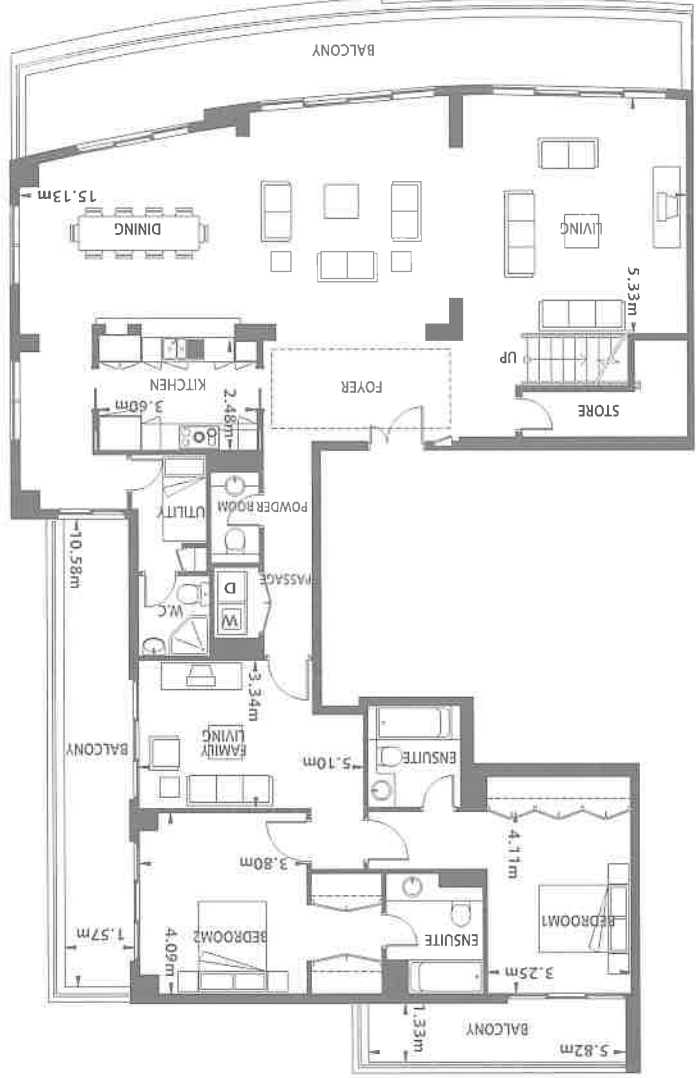
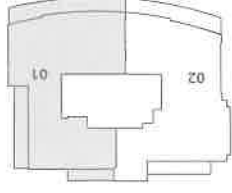
Balcony Area = 62.4 sq m / 671 sq ft

Total Area = 289.7 sq m / 3,118 sq ft



NOTE:- 1. All room dimensions are in imperial and measured to structural elements and exclude wall finishes and construction tolerances. 2. All dimensions have been provided by our consultant architects. 3. Information subject to change without notice. 4. Actual suite area may vary from the stated area. Drawings not to scale E&EO. The developer reserves the right to make revisions. 5. Calculation of suite area is measured to the party walls separating one unit from another unit, the exterior surface of all exterior walls, and the exterior surface of the corridor wall enclosing and abutting the unit. 6. Calculation of balcony area is measured as the area between the party walls separating one unit from another unit, the outermost face of the enclosing guard and the external face of the site abutting the balcony. 7. The units are measured at level 10 in the building. Columns above this level may

NOTE:- 1. All room dimensions are in imperial and measured to structural elements and exclude wall finishes and construction tolerances. 2. All dimensions have been provided by our consultant architects. 3. All materials, dimensions and drawings are approximate. Information subject to change without notice. 4. Actual suite area may vary from the stated area. Drawings not to scale. E&E.C. The developer reserves the right to make revisions. 5. Calculation of suite area is measured as the area bounded by the center line of demising or party walls separating one unit from another unit, the exterior surface of all exterior walls, and the exterior surface of the corridor wall enclosing and abutting the unit. 6. Calculation of balcony area is measured as the area bounded by the center lines of demising or party walls separating one unit from another unit, the outermost face of the enclosing guard and the external face of the site abutting the balcony. 7. The units are measured at level 10 in the building. Columns above this level may reduce in size, while the floors below may increase in size.



ft
ft
ft

Penthouse E3 - 01

Level 22

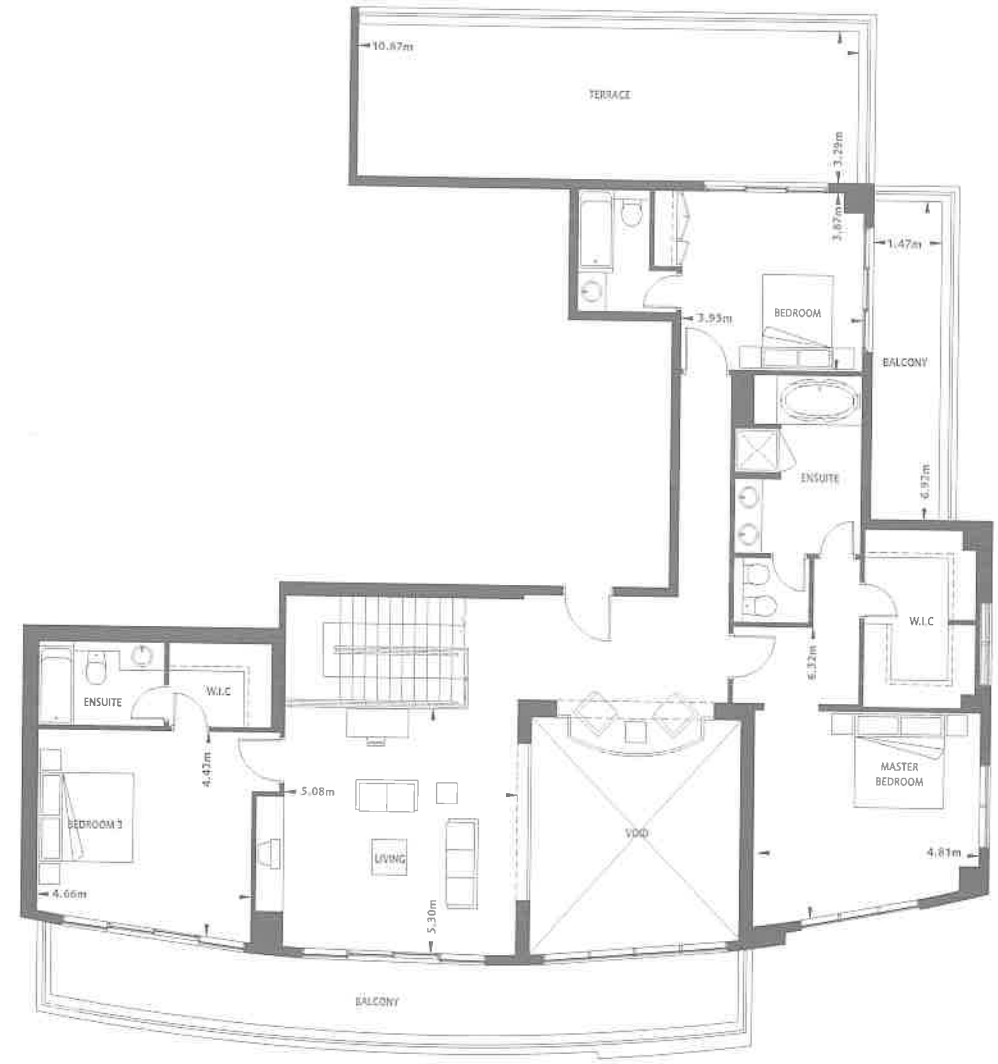
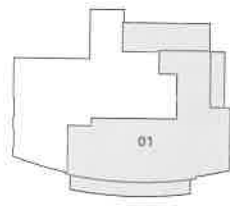
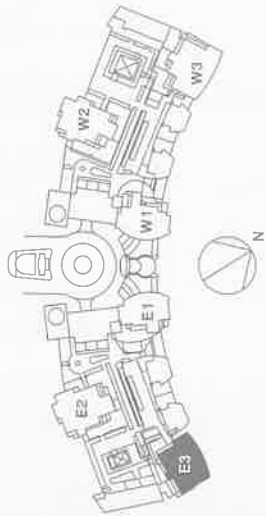
East Duplex Tower Suite

5 BEDROOMS

Area Of The Unit = 434.7 sq m / 4,679 sq ft

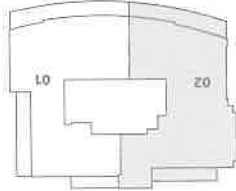
Balcony Area = 143.4 sq m / 1,544 sq ft

Total Area = 578.1 sq m / 6,223 sq ft



NOTE:- 1. All room dimensions are in imperial and measured to structural elements and exclude wall finishes and construction tolerances. 2. All dimensions have been provided by our consultant architects. 3. Information subject to change without notice. 4. Actual suite area may vary from the stated area. Drawings not to scale. E&EO. The developer reserves the right to make revisions. 5. Calculation of suite area is measured to the exterior surface of all exterior walls, the exterior surface of the corridor wall enclosing and abutting the unit, the exterior surface of the site abutting the balcony. 6. Calculation of balcony area is measured as the area enclosed by the party walls separating one unit from another unit, the outermost face of the enclosing guard and the external face of the site abutting the balcony. 7. The units are measured at level 10 in the building. Columns above this level may

NOTE:- 1. All room dimensions are in imperial and measured to structural elements and exclude wall finishes and construction tolerances. 2. All dimensions have been provided by our consultant architects. 3. All materials, dimensions and drawings are approximate. Information subject to change without notice. 4. Actual suite area may vary from the stated area. Drawings not to scale. E&EO. The developer reserves the right to make revisions. 5. Calculation of suite area is measured as the area bounded by the center line of demising or party walls separating one unit from another unit, the exterior surface of all exterior walls, and the exterior surface of the corridor wall enclosing and abutting the unit. 6. Calculation of balcony area is measured as the area bounded by the center lines of demising or party walls separating one unit from another unit, the outermost face of the enclosing guard and the external face of the site abutting the balcony. 7. The units are measured at level 10 in the building. Columns above this level may reduce in size, while the floors below may increase in size.



Penthouse W1 - 01

Level 24

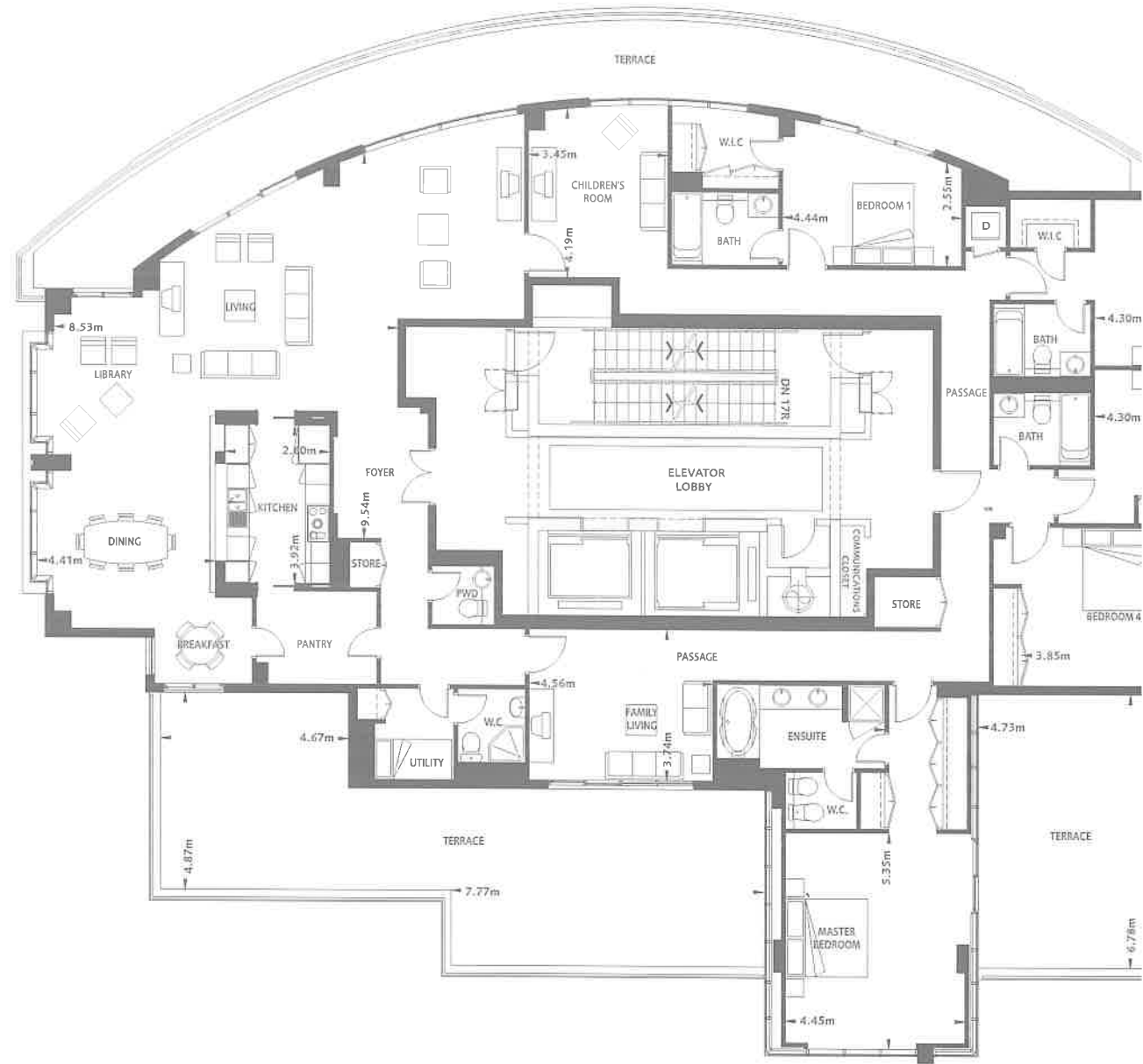
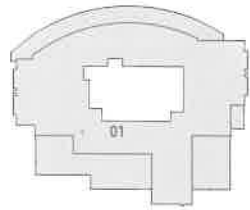
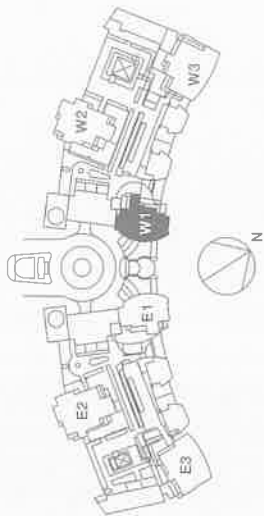
West Tower Suite

5 BEDROOMS

Area Of The Unit = 376.6 sq m / 4,054 sq ft

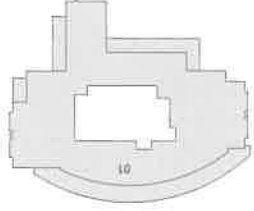
Balcony Area = 173.2 sq m / 1,864 sq ft

Total Area = 549.8 sq m / 5,918 sq ft



NOTE:- 1. All room dimensions are in imperial and measured to structural elements and exclude wall finishes and construction tolerances. 2. All dimensions have been provided by our consultant architects. Information subject to change without notice. 4. Actual suite area may vary from the stated area. Drawings not to scale. E&EO. The developer reserves the right to make revisions. 5. Calculation of suite area is measured to party walls separating one unit from another unit, the exterior surface of all exterior walls, and the exterior surface of the corridor wall enclosing and abutting the unit. 6. Calculation of balcony area is measured as the area separating one unit from another unit, the outermost face of the enclosing guard and the external face of the site abutting the balcony. 7. The units are measured at level 10 in the building. Columns above this level n

NOTE:- 1. All room dimensions are in imperial and measured to structural elements and exclude wall finishes and construction tolerances. 2. All dimensions have been provided by our consultant architects. 3. All materials, dimensions and drawings are approximate. Information subject to change without notice. 4. Actual suite area may vary from the stated area. Drawings not to scale. E&E.O. The developer reserves the right to make revisions. 5. Calculation of suite area is measured as the area bounded by the center line of demising or party walls separating one unit from another unit, the exterior surface of all exterior walls, and the exterior surface of the corridor wall enclosing and abutting the unit. 6. Calculation of balcony area is measured as the area bounded by the center lines of demising or party walls separating one unit from another unit, the outermost face of the enclosing guard and the external face of the site abutting the balcony. 7. The units are measured at level 10 in the building. Columns above this level may reduce in size, while the floors below may increase in size.



q ft
q ft
q ft

Penthouse W3 - 02

Level 38

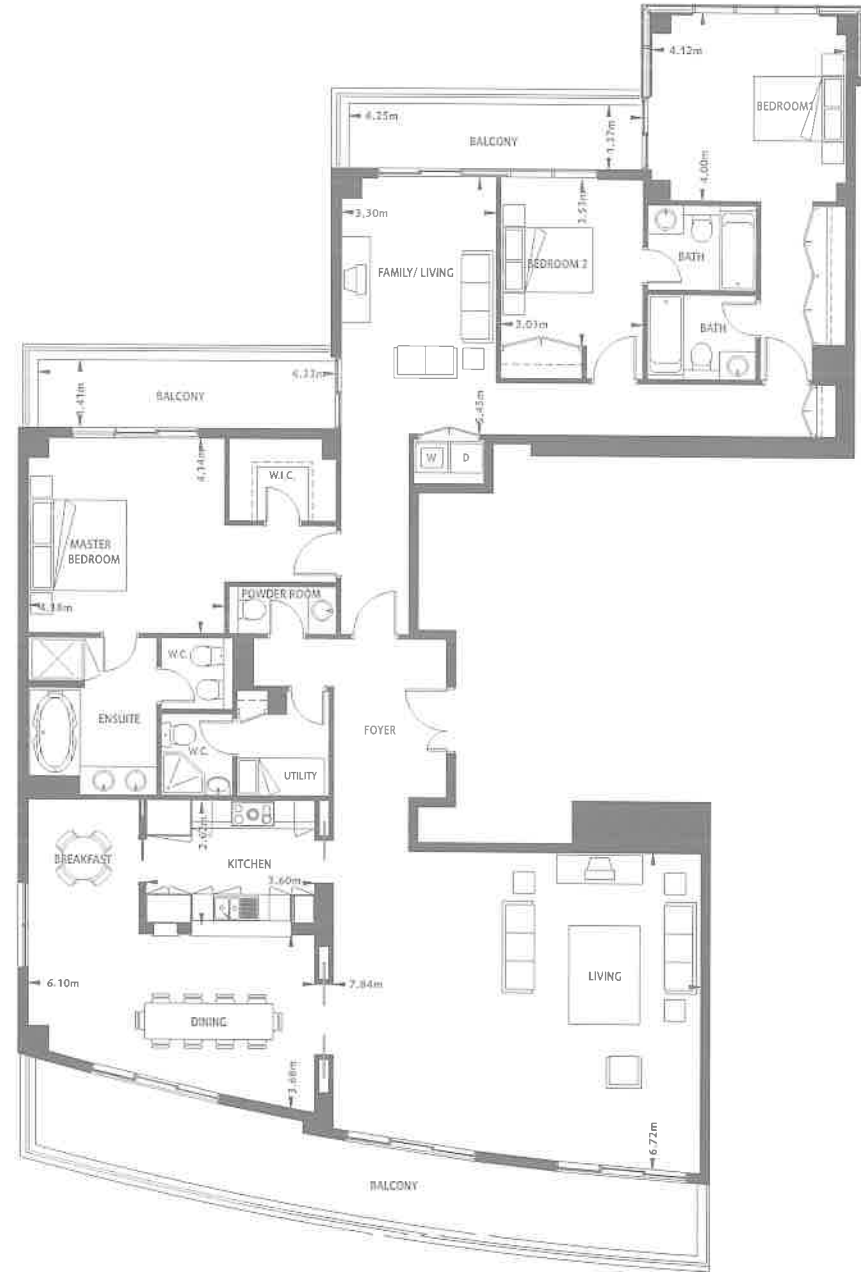
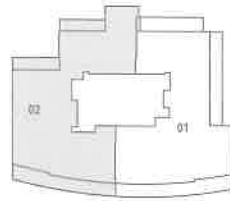
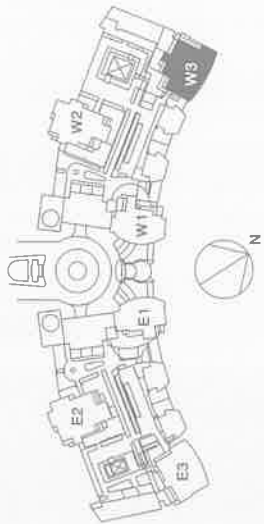
West Tower Suite

3 BEDROOMS

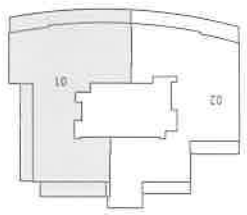
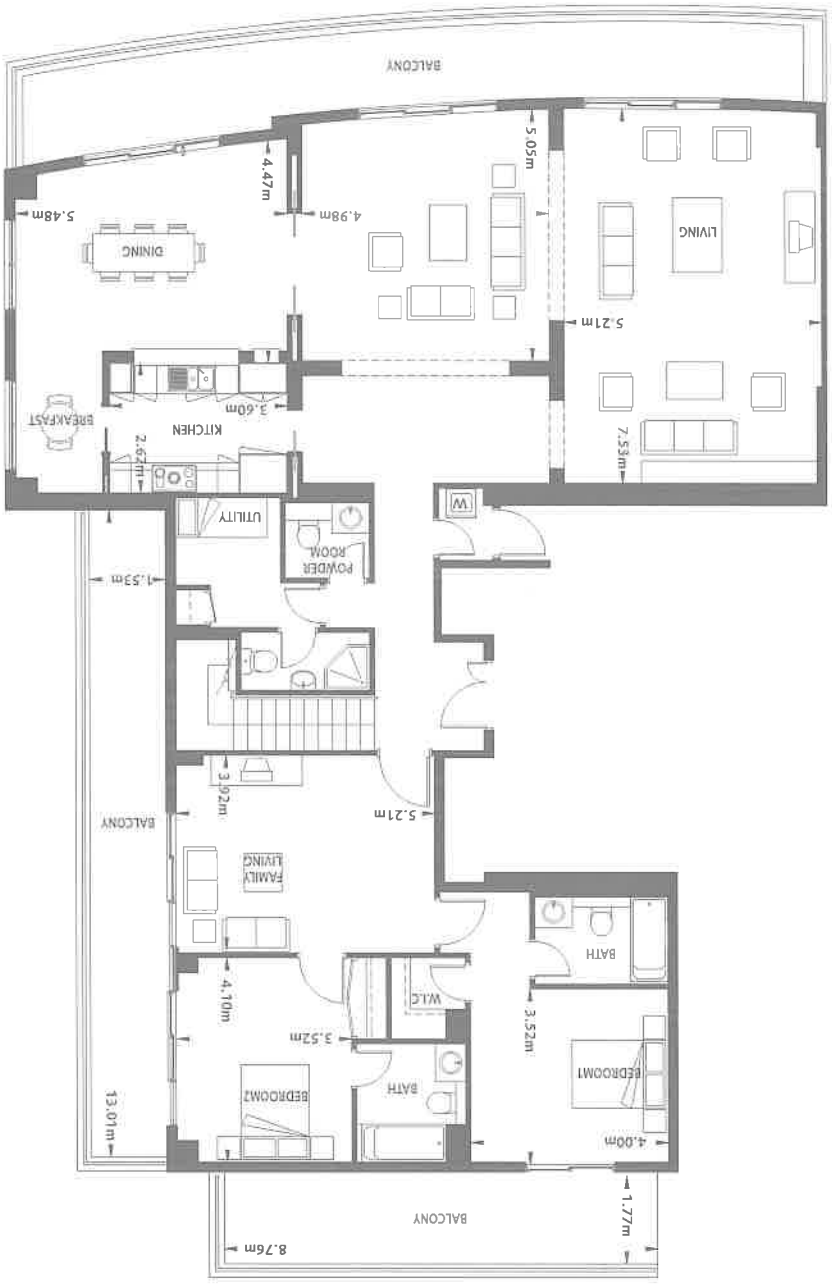
Area Of The Unit = 254.5 m / 2,739 sq ft

Balcony Area = 51.1 m / 550 sq ft

Total Area = 305.6 m / 3,289 sq ft



NOTE:- 1. All room dimensions are in imperial and measured to structural elements and exclude wall finishes and construction tolerances. 2. All dimensions have been provided by our consultant architects. Information subject to change without notice. 4. Actual suite area may vary from the stated area. Drawings not to scale E&EO. The developer reserves the right to make revisions. 5. Calculation of suite area is measured to party walls separating one unit from another unit, the exterior surface of all exterior walls, and the exterior surface of the corridor wall enclosing and abutting the unit. 6. Calculation of balcony area is measured as the area separating one unit from another unit, the outermost face of the enclosing guard and the external face of the site abutting the balcony. 7. The units are measured at level 10 in the building. Columns above this level are



NOTE:- 1. All room dimensions are in Imperial and measured to structural elements and exclude wall finishes and construction tolerances. 2. All dimensions have been provided by our consultant architects. 3. All materials, dimensions and drawings are approximate. Information subject to change without notice. 4. Actual suite area may vary from the stated area. Drawings not to scale. E&C. The developer reserves the right to make revisions. 5. Calculation of suite area is measured as the area bounded by the center line of demising or party walls separating one unit from another unit, the exterior surface of all exterior walls, and the exterior surface of the corridor wall enclosing and abutting the unit. 6. Calculation of balcony area is measured as the area bounded by the center lines of demising or party walls separating one unit from another unit, the outermost face of the enclosing guard and the external face of the site abutting the balcony. 7. The units are measured at level 10 in the building. Columns above this level may reduce in size, while the floors below may increase in size.

Penthouse W3 - 01

Level 37

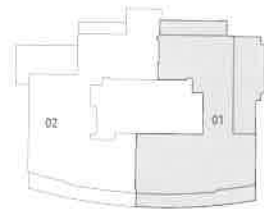
West Tower Suite

3 BEDROOMS

Area Of The Unit = 224,5 sq m / 2,416 sq ft

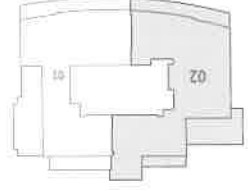
Balcony Area = 101,1 sq m / 1,088 sq ft

Total Area = 325,6 sq m / 3,504 sq ft



NOTE:- 1. All room dimensions are in imperial and measured to structural elements and exclude wall finishes and construction tolerances. 2. All dimensions have been provided by our consultant architects. 3. Information subject to change without notice. 4. Actual suite area may vary from the stated area. Drawings not to scale. E&O. The developer reserves the right to make revisions. 5. Calculation of suite area is measured to the exterior surface of the corridor wall enclosing and abutting the unit. 6. Calculation of balcony area is measured as the area between the exterior wall separating one unit from another unit, the outermost face of the enclosing guard and the external face of the site abutting the balcony. 7. The units are measured at level 10 in the building. Columns above this level may

NOTE:- 1. All room dimensions are in imperial and measured to structural elements and exclude wall finishes and construction tolerances. 2. All dimensions have been provided by our consultant architects. 3. All materials, dimensions and drawings are approximate. Information subject to change without notice. 4. Actual site area may vary from the stated area. Drawings not to scale. E&CO. The developer reserves the right to make revisions. 5. Calculation of suite area is measured as the area bounded by the center line of demising or party walls separating one unit from another unit, the exterior surface of all exterior walls, and the exterior surface of the corridor wall enclosing and abutting the unit. 6. Calculation of balcony area is measured as the area bounded by the center line of demising or party walls separating one unit from another unit, the outermost face of the enclosing guard and the external face of the site abutting the balcony. 7. The units are measured at level 10 in the building. Columns above this level may reduce in size, while the floors below may increase in size.



ft
ft
ft

2

Penthouse W3 - 01

Upper - Level 39

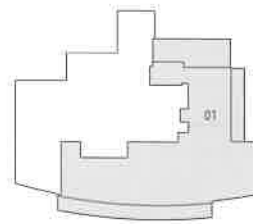
West Duplex Tower Suite

5 BEDROOMS

Area Of The Unit = 494.6 sq m / 5,324 sq ft

Balcony Area = 161.2 m / 1,735 sq ft

Total Area = 655.8 m / 7,059 sq ft



NOTE:- 1. All room dimensions are in imperial and measured to structural elements and exclude wall finishes and construction tolerances. 2. All dimensions have been provided by our consultant architects. Information subject to change without notice. 4. Actual suite area may vary from the stated area. Drawings not to scale E&EO. The developer reserves the right to make revisions. 5. Calculation of suite area is measured to party walls separating one unit from another unit, the exterior surface of all exterior walls, and the exterior surface of the corridor wall enclosing and abutting the unit. 6. Calculation of balcony area is measured as the area between the party walls separating one unit from another unit, the outermost face of the enclosing guard and the external face of the site abutting the balcony. 7. The units are measured at level 10 in the building. Columns above this level may

