

**NOTE:**

1. All room dimensions are in metric and measured to structural elements and exclude wall finishes and construction tolerances.
2. All dimensions have been provided by our consultant architects.
3. All materials, dimensions and drawings are approximate. Information subject to change without notice.
4. Actual suite area may vary from the stated area. Drawings not to scale E&E.D. The developer reserves the right to make revisions.
5. Calculation of suite area is measured as the area bounded by the center line of demising or party walls separating one unit from another unit, the exterior walls, and the exterior surface of the corridor wall enclosing and abutting the unit.
6. Calculation of balcony area is measured as the area bounded by the center lines of demising or party walls separating one unit from another unit, the outermost face of the enclosing guard and the external face of the suite abutting the balcony.
7. The units are measured at level 10 in the building. Columns above this level may reduce in size, while the floors below may increase in size.
8. The developer reserves the right to make revisions to the floor plans and any features and amenities mentioned in this brochure.

# The Loft Towers

# Central Tower



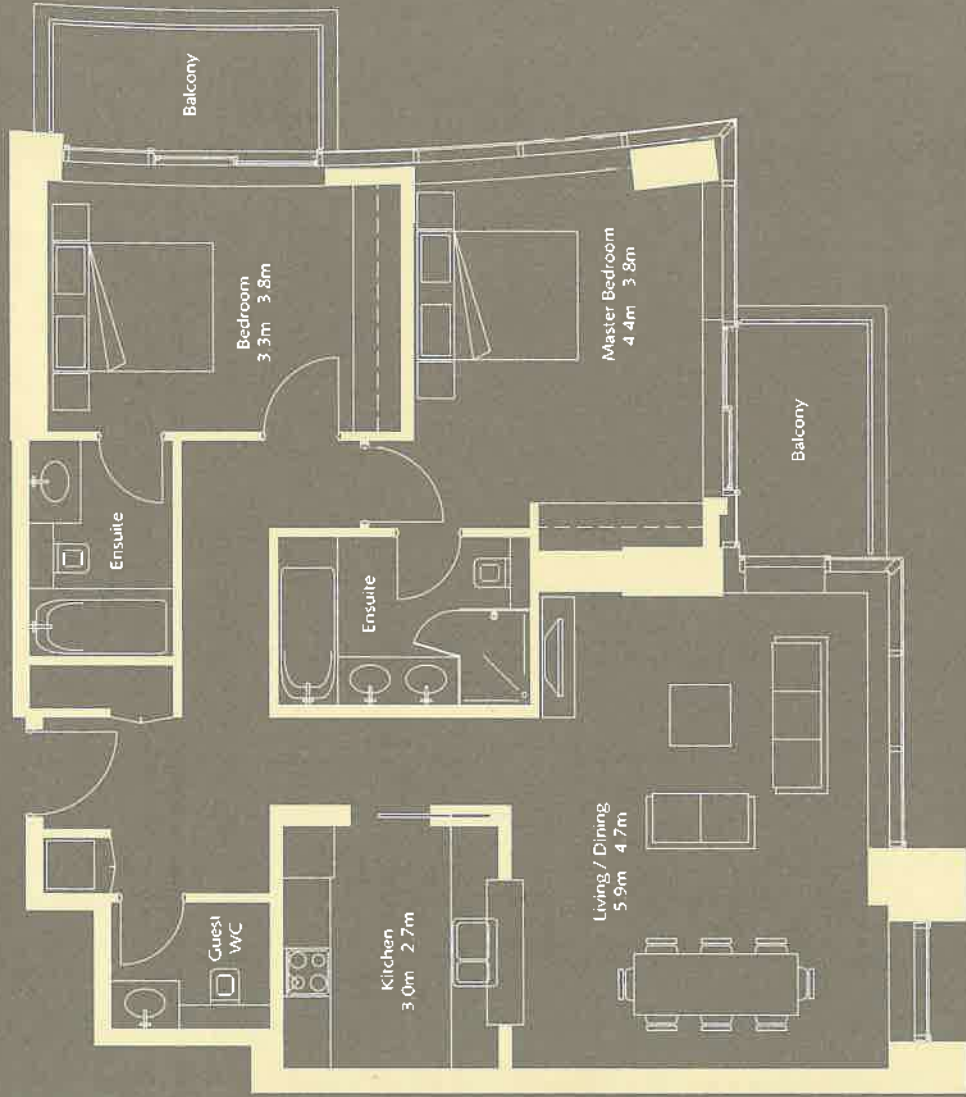
SUITE 2  
LEVEL 2 - 25  
2 BEDROOM

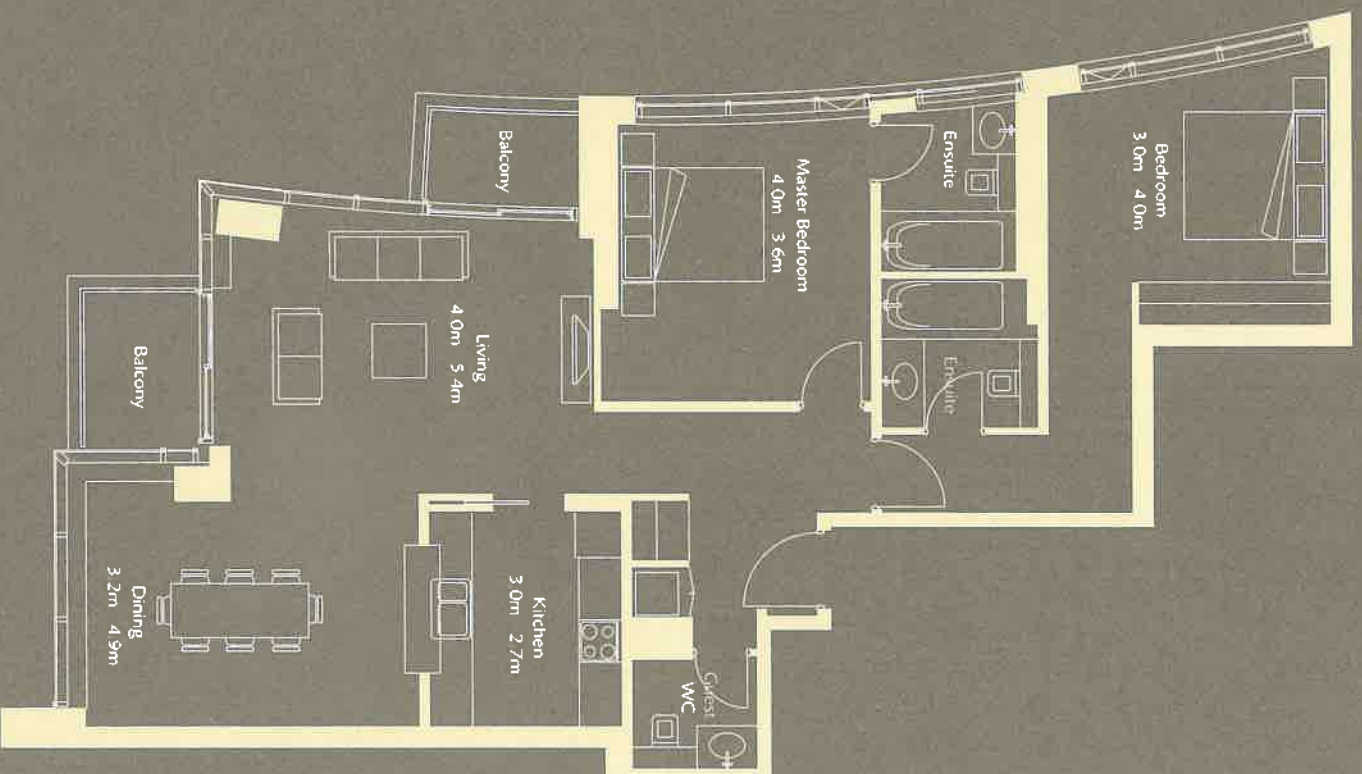


SUITE AREA = 115.7 S.M. ( 1,245 S.F.)  
BALCONY AREA = 12.5 S.M. ( 134 S.F.)  
TOTAL AREA = 128.1 S.M. ( 1,379 S.F.)



KEY PLAN



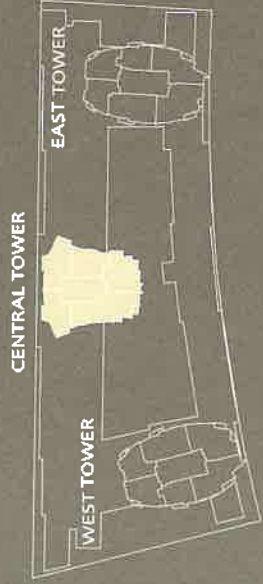


**NOTE:**

- 1 All room dimensions are in metric and measured to structural elements and exclude wall finishes and construction tolerances
- 2 All dimensions have been provided by our consultant architects
- 3 All materials, dimensions and drawings are approximate. Information subject to change without notice
- 4 Actual suite area may vary from the stated area. Drawings not to scale E&EO. The developer reserves the right to make revisions
- 5 Calculation of suite area is measured as the area bounded by the center line of demising or party walls separating one unit from another unit, the exterior walls, and the exterior surface of the corridor wall enclosing and abutting the unit
- 6 Calculation of balcony area is measured as the area bounded by the center lines of demising or party walls separating one unit from another unit, the outermost face of the enclosing guard and the external face of the suite abutting the balcony
- 7 The units are measured at level 10 in the building. Columns above this level may reduce in size, while the floors below may increase in size
- 8 The developer reserves the right to make revisions to the floor plans and any features and amenities mentioned in this brochure.

# The Loft Towers

# Central Tower

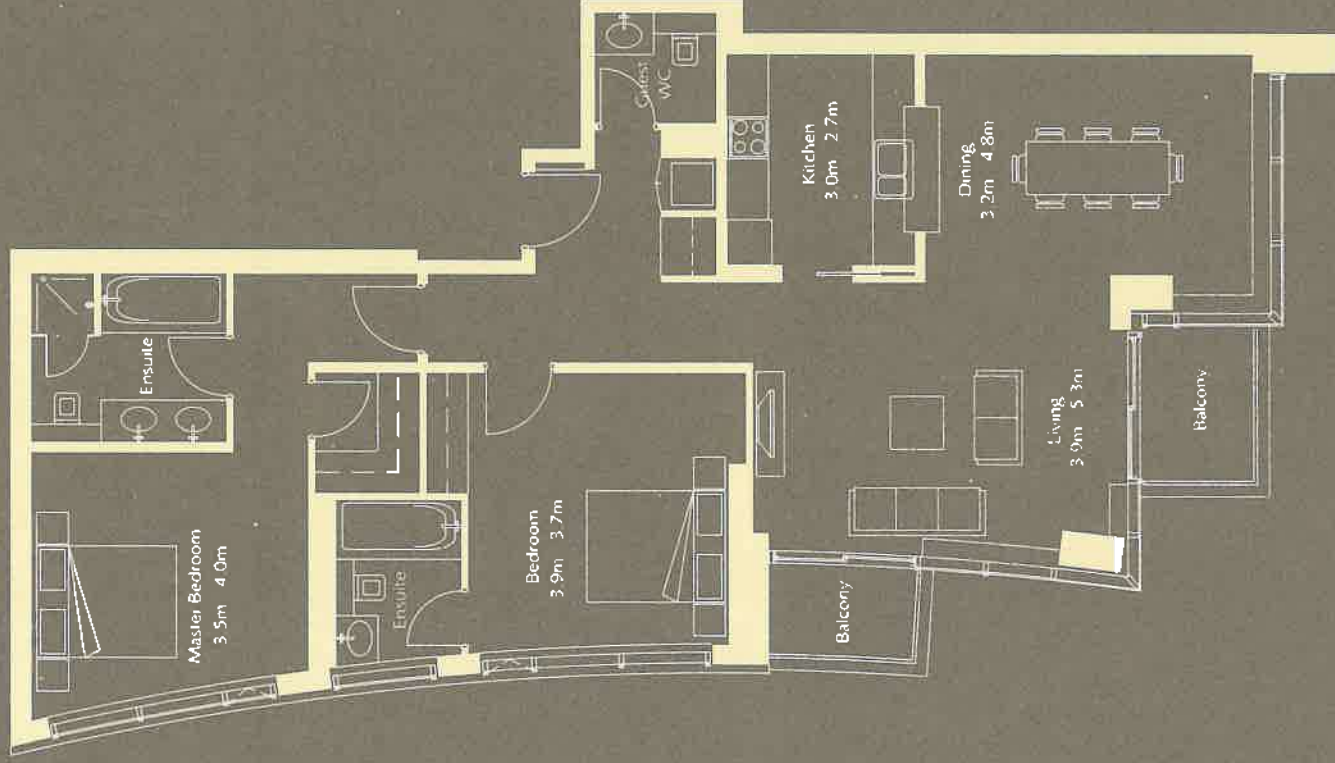


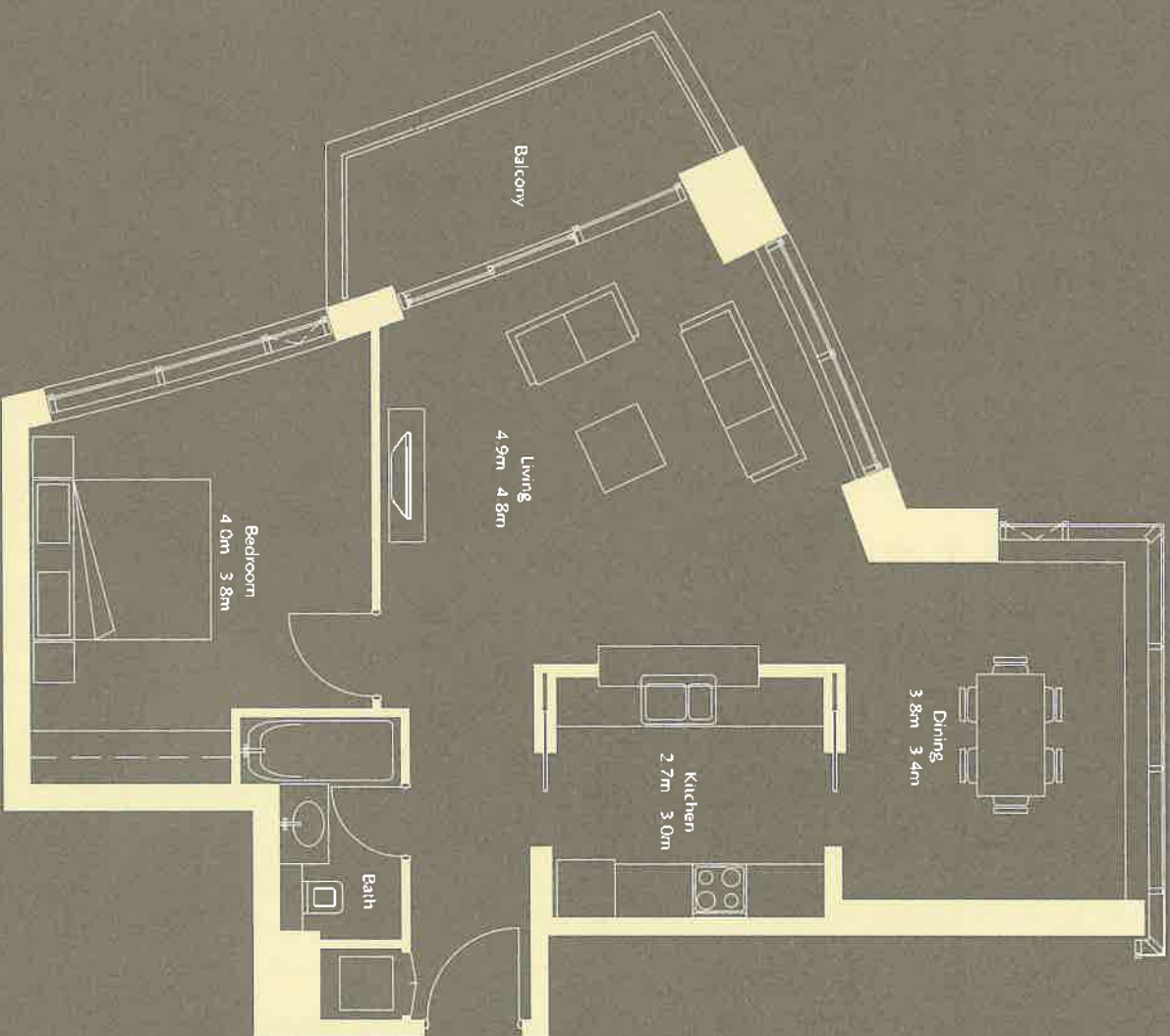
KEY PLAN



SUITE 3  
LEVEL 3 - 25  
2 BEDROOM

SUITE AREA = 126.9 S.M. ( 1,366 S.F.)  
BALCONY AREA = 8.4 S.M. ( 90 S.F.)  
TOTAL AREA = 135.3 S.M. ( 1,456 S.F.)

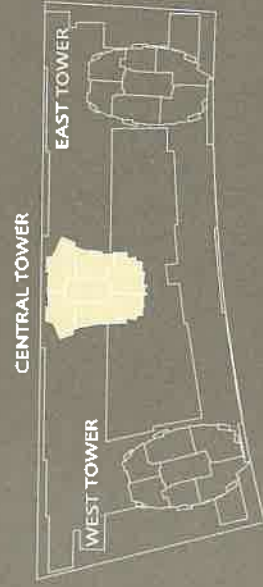


**NOTE:**

1. All room dimensions are in metric and measured to structural elements and exclude wall finishes and construction tolerances.
2. All dimensions have been provided by our consultant architects.
3. All materials, dimensions and drawings are approximate. Information subject to change without notice.
4. Actual suite area may vary from the stated area. Drawings not to scale E&CO. The developer reserves the right to make revisions.
5. Calculation of suite area is measured as the area bounded by the center line of demising or party walls separating one unit from another unit, the exterior walls, and the exterior surface of the corridor wall enclosing and abutting the unit.
6. Calculation of balcony area is measured as the area bounded by the center lines of demising or party walls separating one unit from another unit, the outermost face of the enclosing guard and the external face of the suite abutting the balcony.
7. The units are measured at level 10 in the building. Columns above this level may reduce in size, while the floors below may increase in size.
8. The developer reserves the right to make revisions to the floor plans and any features and amenities mentioned in this brochure.

# The Loft Towers

# Central Tower



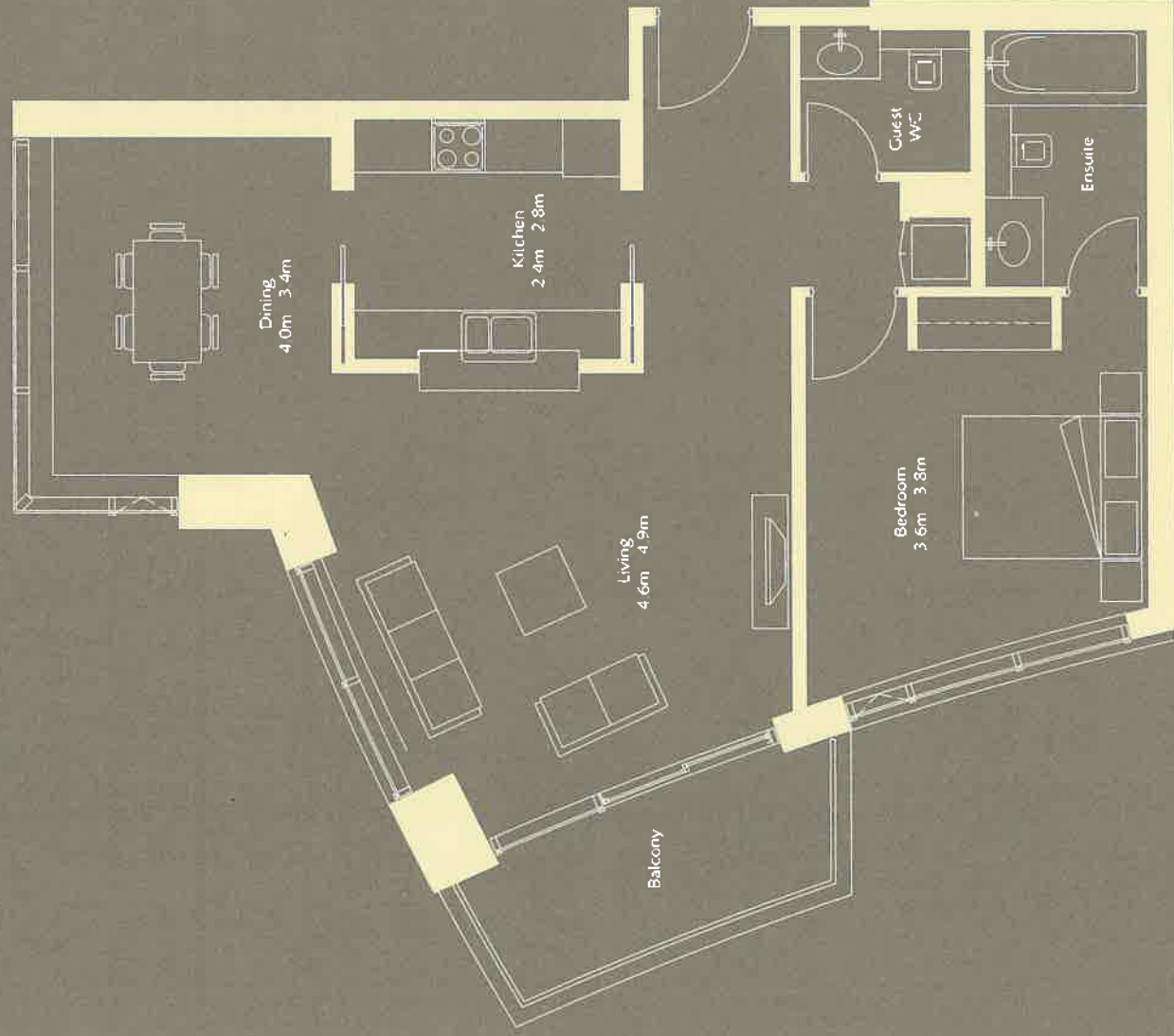
SUITE 4  
LEVEL 3 - 25  
1 BEDROOM

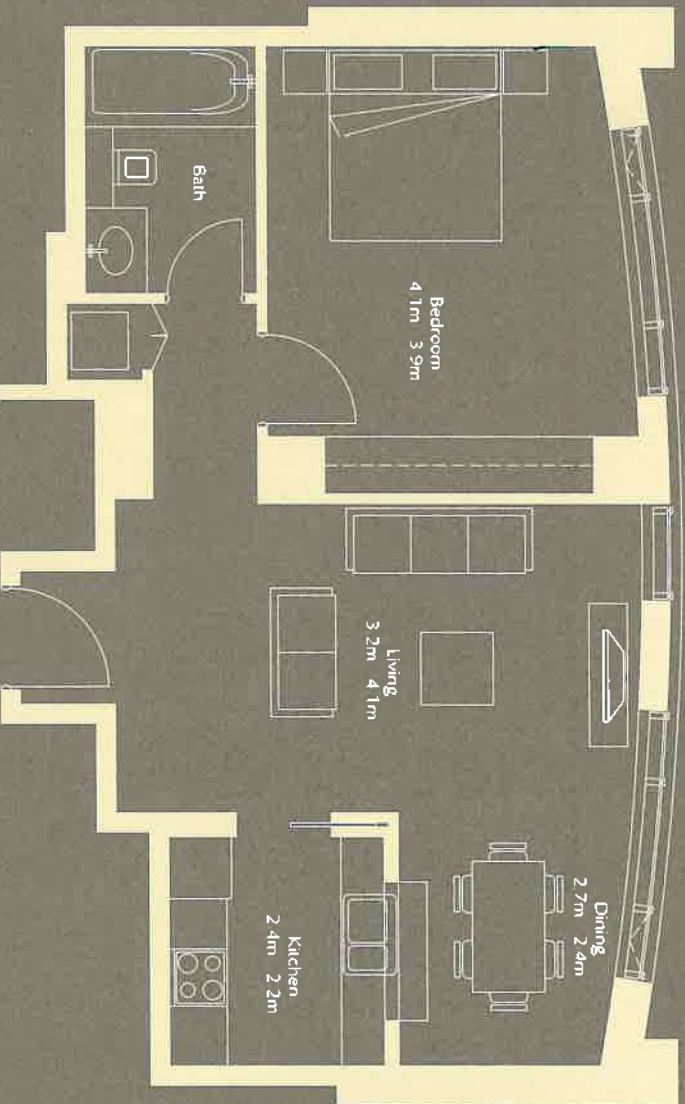


SUITE AREA = 89.6 S.M. ( 964 S.F.)  
BALCONY AREA = 8.4 S.M. ( 90 S.F.)  
TOTAL AREA = 97.9 S.M. ( 1,054 S.F.)



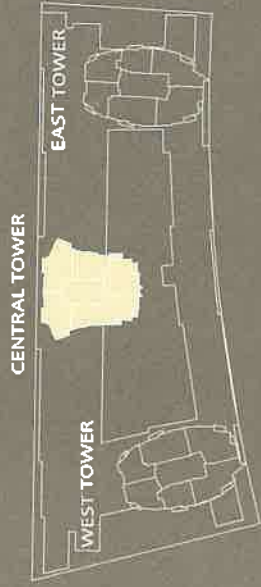
KEY PLAN





- NOTE:**
1. All room dimensions are in metric and measured to structural elements and exclude wall finishes and construction tolerances
  2. All dimensions have been provided by our consultant architects
  3. All materials, dimensions and drawings are approximate. Information subject to change without notice
  4. Actual suite area may vary from the stated area. Drawings not to scale E&EO. The developer reserves the right to make revisions
  5. Calculation of suite area is measured as the area bounded by the center line of demising or party walls separating one unit from another unit, the exterior walls, and the exterior surface of the corridor wall enclosing and abutting the unit.
  6. Calculation of balcony area is measured as the area bounded by the center lines of demising or party walls separating one unit from another unit, the outermost face of the enclosing guard and the external face of the suite abouting the balcony
  7. The units are measured at level 10 in the building. Columns above this level may reduce in size, while the floors below may increase in size
  8. The developer reserves the right to make revisions to the floor plans and any features and amenities mentioned in this brochure

# The Loft Towers



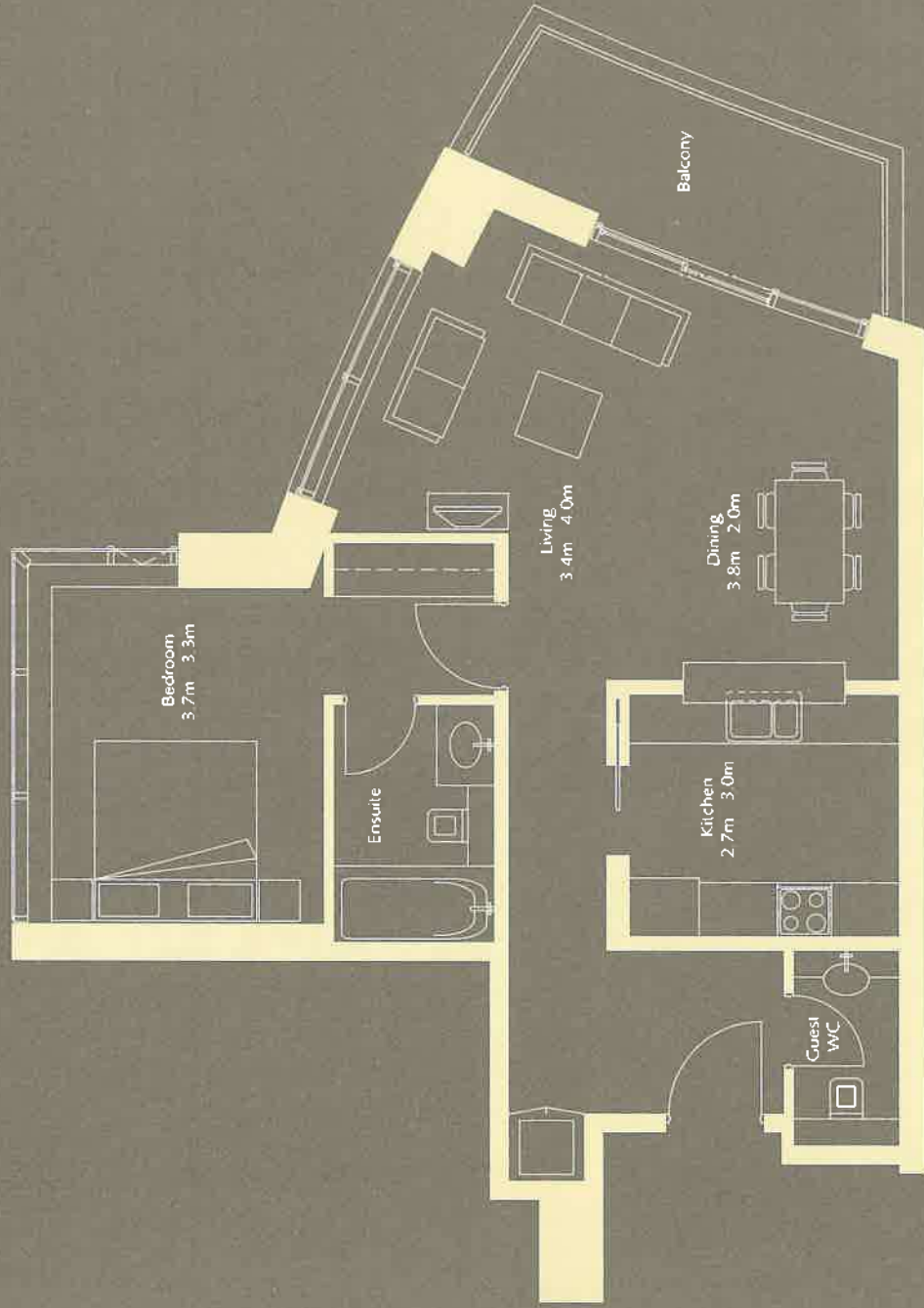
KEY PLAN

# Central Tower

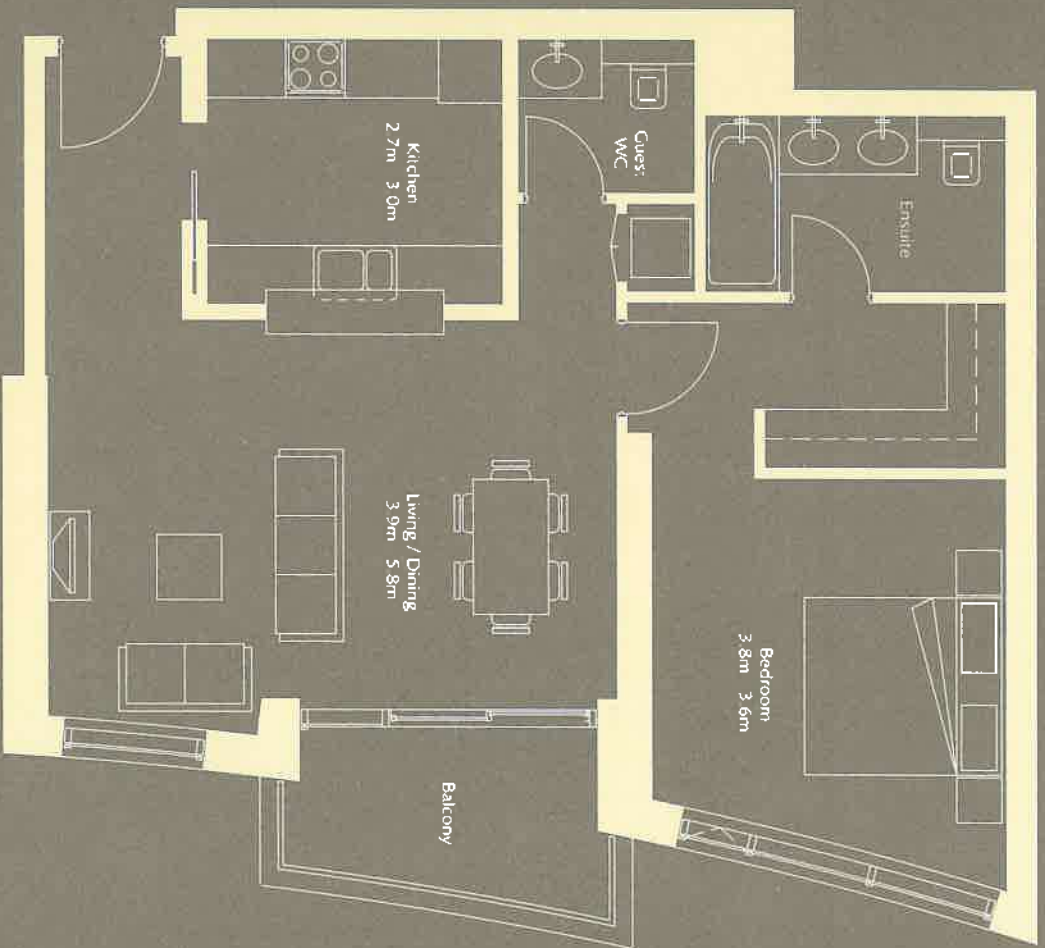


SUITE 6  
LEVEL 2 - 25  
1 BEDROOM

SUITE AREA = 77.9 S.M. ( 838 S.F.)  
BALCONY AREA = 9.5 S.M. ( 102 S.F.)  
TOTAL AREA = 87.3 S.M. ( 940 S.F.)



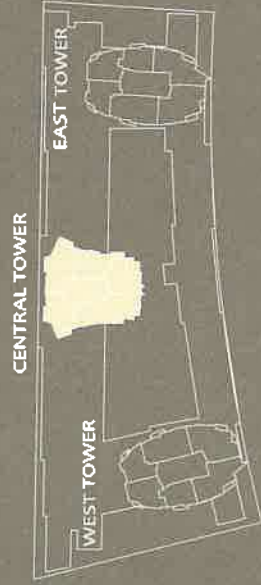




**NOTE:**

1. All room dimensions are in metric and measured to structural elements and exclude wall finishes and construction tolerances.
2. All dimensions have been provided by our consultant architects.
3. All materials, dimensions and drawings are approximate. Information subject to change without notice.
4. Actual suite area may vary from the stated area. Drawings not to scale E&EO. The developer reserves the right to make revisions.
5. Calculation of suite area is measured as the area bounded by the center line of demising or party walls separating one unit from another unit, the exterior walls, and the exterior surface of the corridor wall enclosing and abutting the unit.
6. Calculation of balcony area is measured as the area bounded by the center lines of demising or party walls separating one unit from another unit, the outermost face of the enclosing guard and the external face of the suite abutting the balcony.
7. The units are measured at level 10 in the building. Columns above this level may reduce in size, while the floors below may increase in size.
8. The developer reserves the right to make revisions to the Floor Plans and any features and amenities mentioned in this brochure.

# The Loft Towers



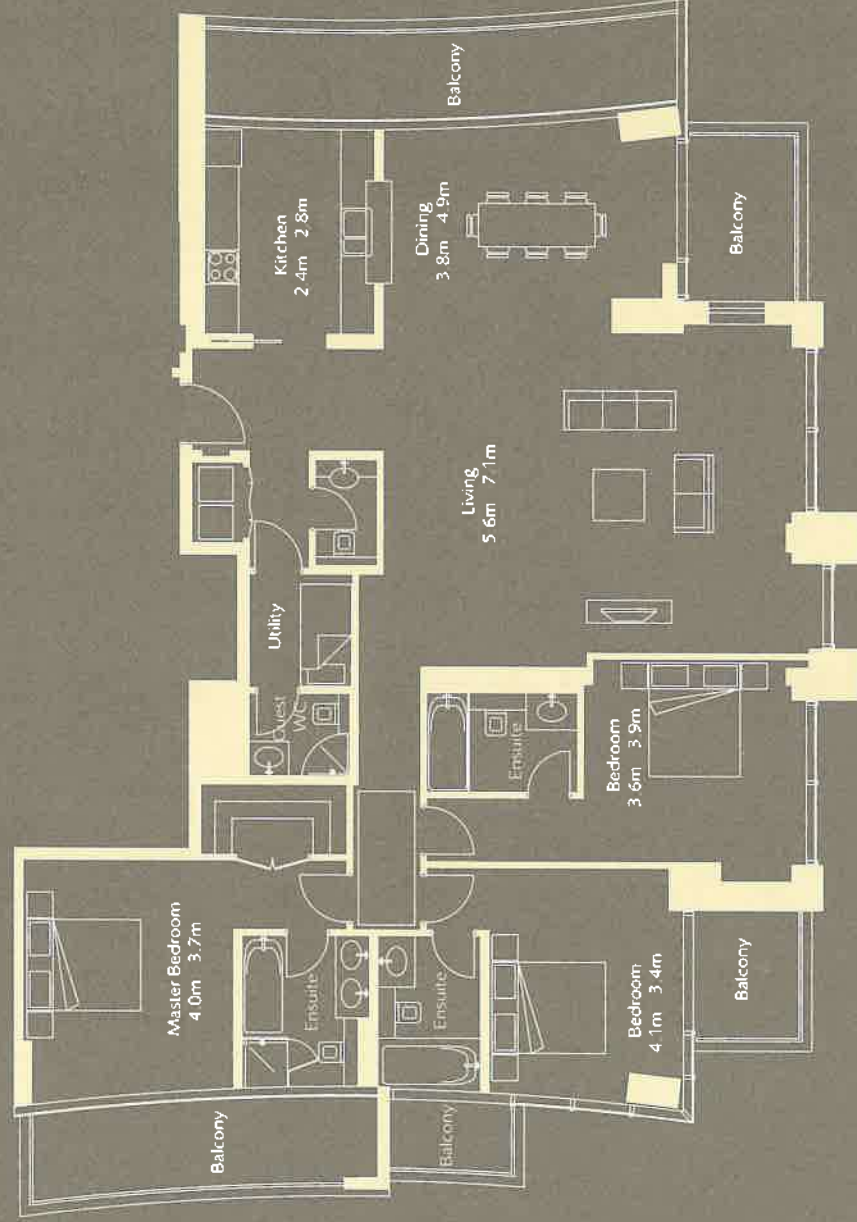
KEY PLAN

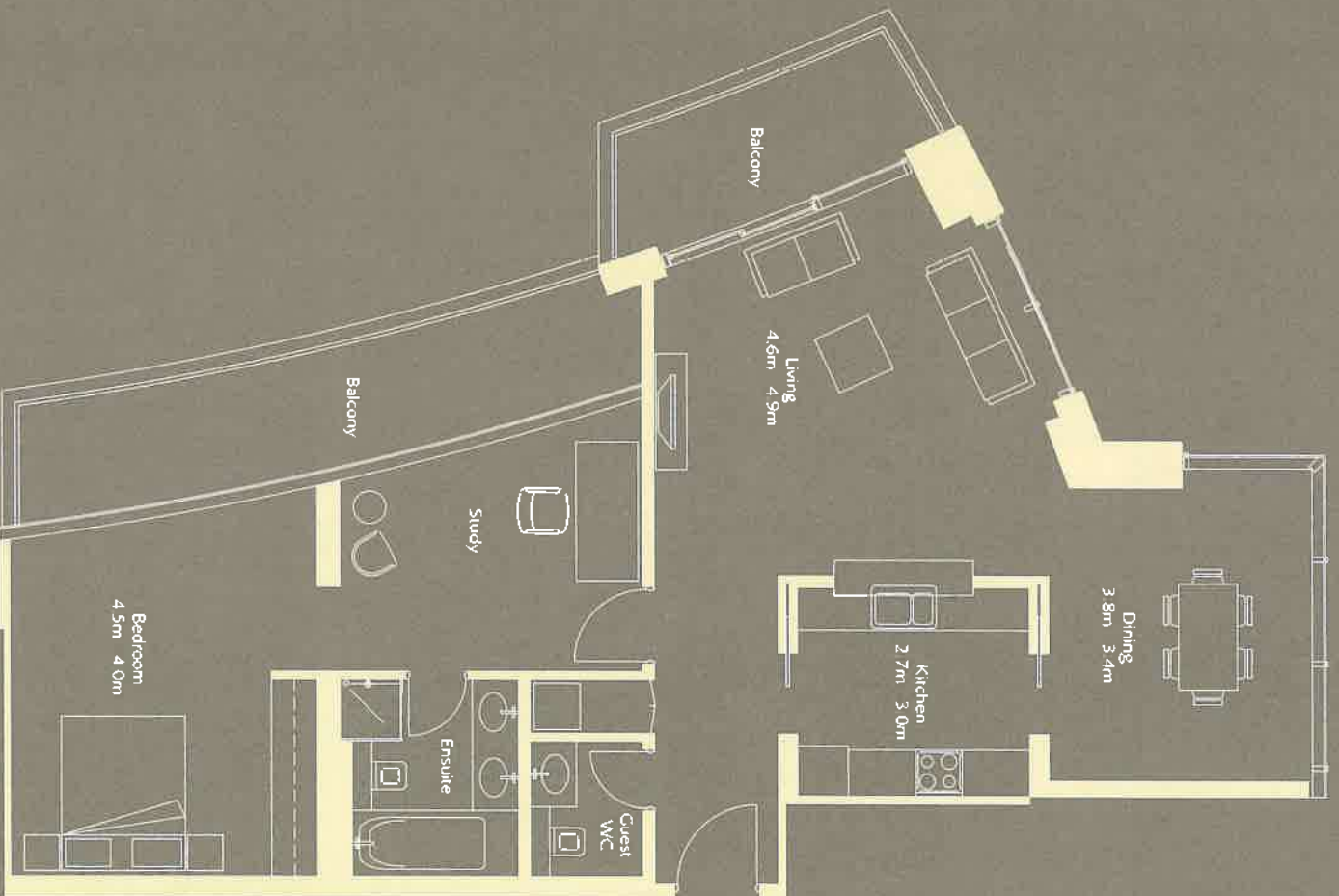
# Central Tower

SUITE 2  
LEVEL 26  
3 BEDROOM PENTHOUSE



SUITE AREA = 191.0 S.M. ( 2056 S.F.)  
BALCONY AREA = 33.8 S.M. ( 364 S.F.)  
TOTAL AREA = 224.8 S.M. ( 2420 S.F.)





**NOTE:**

1. All room dimensions are in metric and measured to structural elements and exclude wall finishes and construction tolerances.
2. All dimensions have been provided by our consultant architects.
3. All materials, dimensions and drawings are approximate. Information subject to change without notice.
4. Actual suite area may vary from the stated area. Drawings not to scale. E&EO. The developer reserves the right to make revisions.
5. Calculation of suite area is measured as the area bounded by the center line of demising or party walls separating one unit from another unit, the exterior walls, and the exterior surface of the corridor wall enclosing and abutting the unit.
6. Calculation of balcony area is measured as the area bounded by the center lines of demising or party walls separating one unit from another unit, the outermost face of the enclosing guard and the external face of the suite abutting the balcony.
7. The units are measured at level 10 in the building. Columns above this level may reduce in size, while the floors below may increase in size.
8. The developer reserves the right to make revisions to the floor plans and any features and amenities mentioned in this brochure.

# The Loft Towers



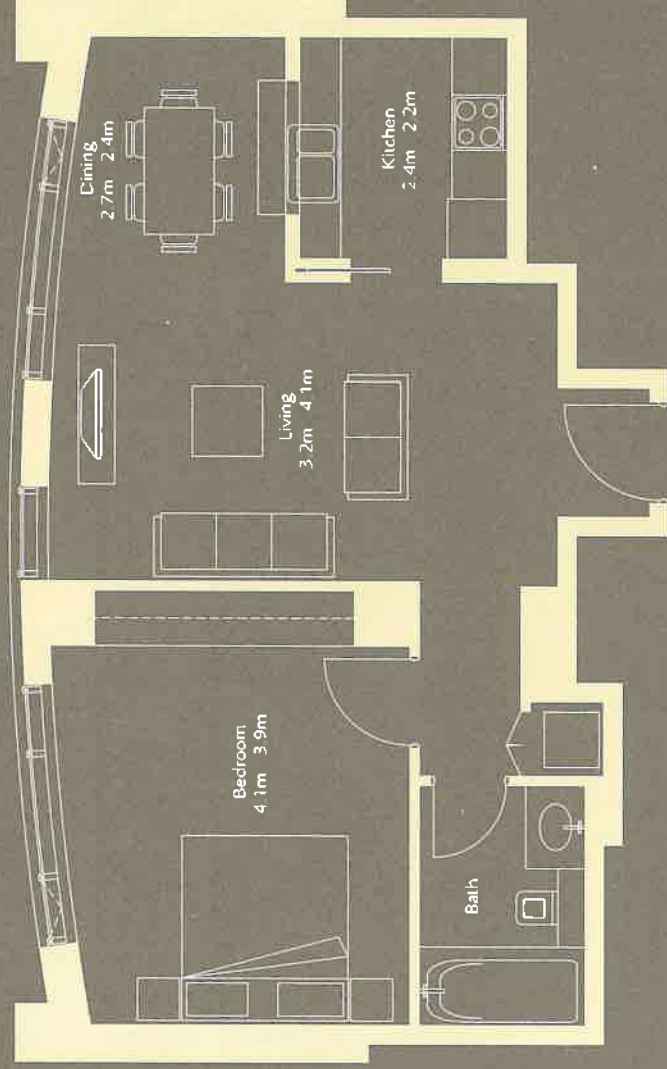
KEY PLAN

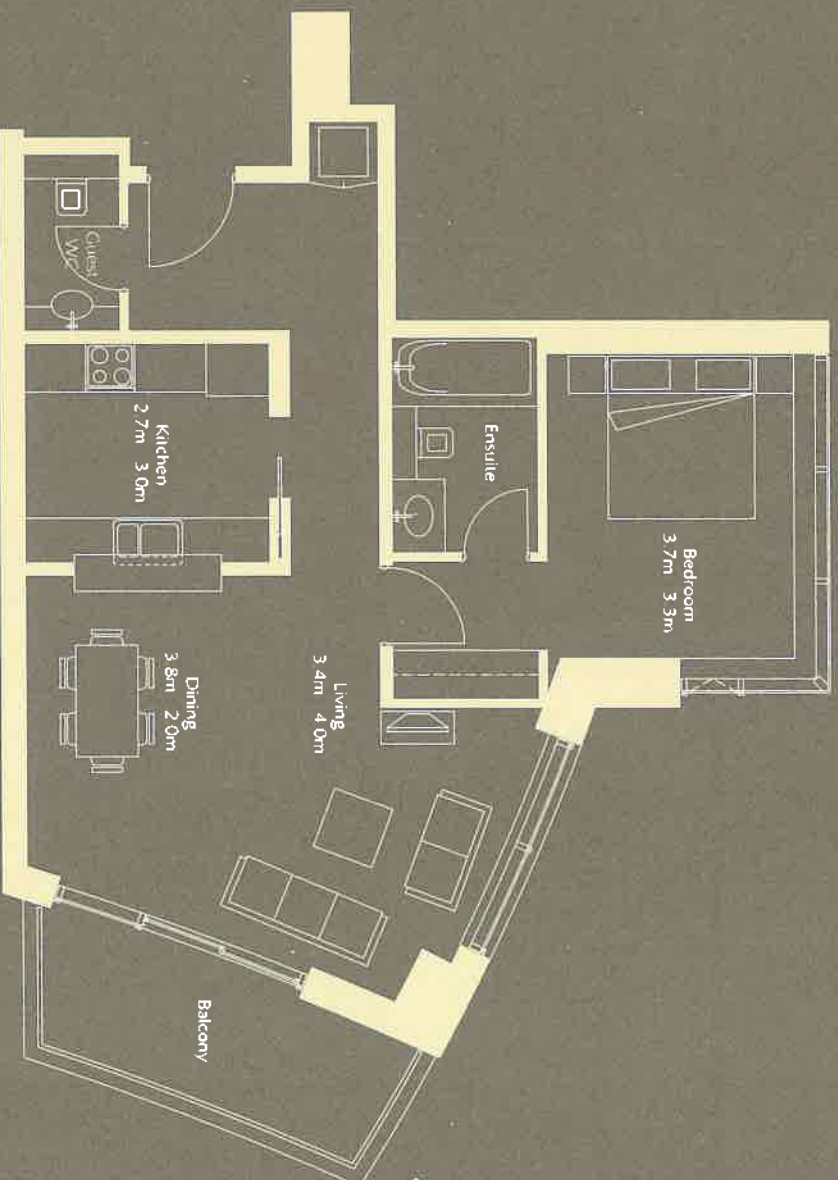
# Central Tower

SUITE 4  
LEVEL 26  
1 BEDROOM



SUITE AREA = 66.6 S.M. ( 717 S.F.)  
BALCONY AREA = 0.0 S.M. ( 0 S.F.)  
TOTAL AREA = 66.6 S.M. ( 717 S.F.)





**NOTE:**

1. All room dimensions are in metric and measured to structural elements and exclude wall finishes and construction tolerances.
2. All dimensions have been provided by our consultant architects
3. All materials, dimensions and drawings are approximate. Information subject to change without notice
4. Actual suite area may vary from the stated area. Drawings not to scale E&E.C. The developer reserves the right to make revisions
5. Calculation of suite area is measured as the area bounded by the center line of demising or party walls separating one unit from another unit, the exterior walls, and the exterior surface of the corridor wall enclosing and abutting the unit
6. Calculation of balcony area is measured as the area bounded by the center lines of demising or party walls separating one unit from another unit, the outermost face of the enclosing guard and the external face of the suite abutting the balcony
7. The units are measured at level 10 in the building. Columns above this level may reduce in size, while the floors below may increase in size
8. The developer reserves the right to make revisions to the floor plans and any features and amenities mentioned in this brochure.

# Amenities

## External

- Fitness centre & changing rooms
- Squash Courts
- Mini Theatre
- Meeting rooms
- Swimming Pool
- Multi-purpose rooms
- Games room
- Indoor children's play area
- Residents lounges
- Private garden courts
- On grade retail

Please note that not all these facilities will be provided free of charge and a rental or user charge may be applicable.

## Internal

- Central A/C System
- Pre-cooled fresh air system
- Central exhaust system
- Combined IT outlets in each room (television/ telephone/ data)
- Provision of high speed internet facility
- Provision of central TV system to each room
- Door entry system (intercom)
- Emergency generator
- CCTV and access control systems
- Fire alarm system
- Fire fighting system

## Other Facilities

- Available lockers / storage space for tenants rental
- Parking levels for tenants
- 24 Hrs security service
- Concierge facility at the reception lobby of each tower
- 24 Hrs maintenance for common services
- House hold waste removal
- Common area cleaning
- Common area landscaping
- Onsite mail services (pending Empost authority)

All materials, dimensions, drawings, features and amenities are approximate at the time of printing.