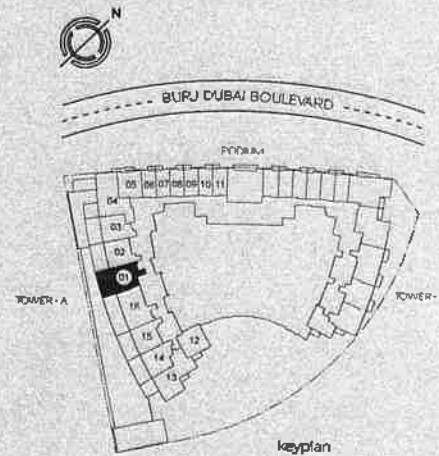
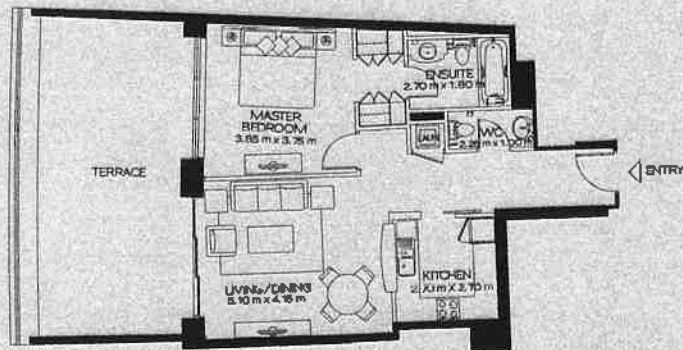


tower 01-podium  
 level 01  
 suite 01

## 1 bedroom

	sq m	sq ft
suite area:	74.92	806
terrace area:	40.08	431
total area:	115.00	1,237

standpoint



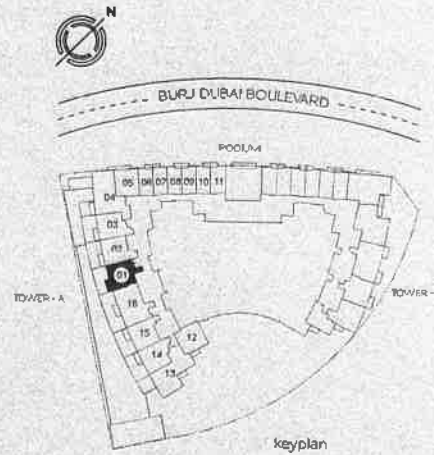
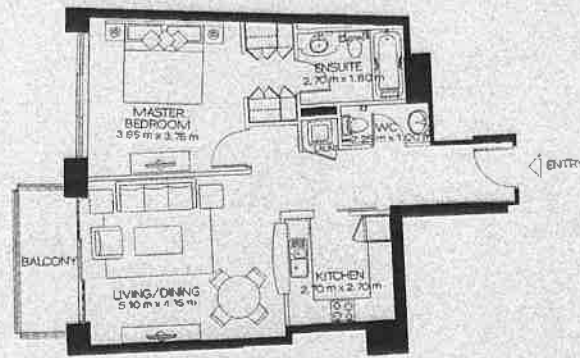
note: 1. All room dimensions are in imperial and measured to structural elements and exclude wall finishes and construction tolerances. 2. All dimensions have been provided by our consultant architects. 3. All materials, dimensions and drawings are approximate. Information subject to change without notice. 4. Actual suite area may vary from the stated area. Drawings not to scale. E&EO. The developer reserves the right to make revisions. 5. Calculation of suite area is measured as the area bounded by the center line of demising or party walls separating one unit from another unit, the exterior walls and the exterior surface of the corridor wall enclosing and abutting the unit. 6. Calculation of balcony area is measured as the area bounded by the center lines of demising or party walls separating one unit from another unit, the outermost face of the enclosing guard and the external face of the site abutting the balcony. 7. The units are measured at level 10 in the building. Columns above this level may reduce in size, while the floors below may increase in size.

tower 01-podium  
 level 02 to 04  
 suite 01

### 1 bedroom

	sq m	sq ft
suite area:	74.92	806
balcony area:	6.28	68
total area:	81.20	874

standpoint



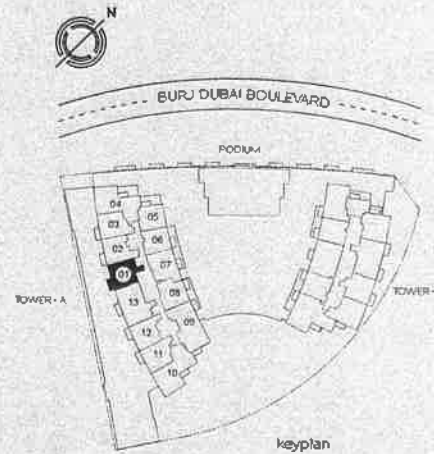
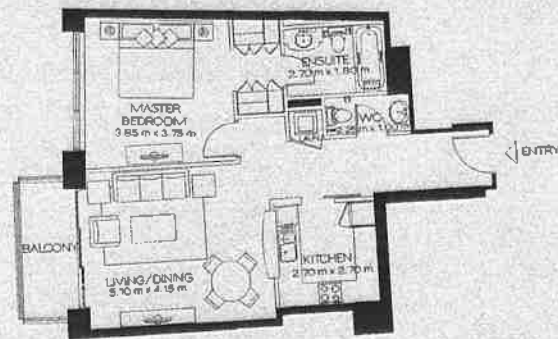
Note: 1. All room dimensions are in imperial and measured to structural elements and exclude wall finishes and construction tolerances. 2. All dimensions have been provided by our consultant architects. 3. All materials, dimensions and drawings are approximate, information subject to change without notice. 4. Actual suite area may vary from the stated area. Drawings not to scale. 5. The developer reserves the right to make revisions. 6. Calculation of suite area is measured as the area bounded by the center line of demising or party walls separating one unit from another unit, the exterior walls, and the exterior surface of the corridor wall enclosing and abutting the unit. 7. Calculation of balcony area is measured as the area bounded by the center lines of demising or party walls separating one unit from another unit, the outermost face of the enclosing guard and the external face of the site abutting the balcony. 8. The units are measured at level 10 in the building. Columns above this level may reduce in size, while the floors below may increase in size.

tower 01  
 level 05 to 27  
 suite 01

## 1 bedroom

	sq m	sq ft
suite area:	74.92	806
balcony area:	6.28	68
total area:	81.20	874

standpoint



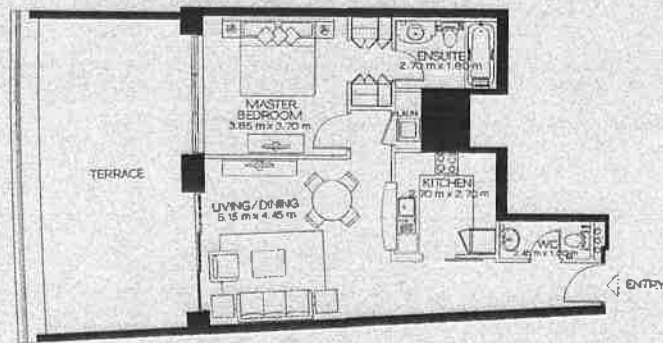
note: 1. All room dimensions are imperial and measured to structural elements and exclude wall finishes and construction tolerances. 2. All dimensions have been provided by our consultant architects. 3. All materials, dimensions and drawings are approximate. Information subject to change without notice. 4. Actual suite area may vary from the stated area. Drawings not to scale E&BQ. The developer reserves the right to make revisions. 5. Calculation of suite area is measured as the area bounded by the center line of demising or party walls separating one unit from another unit, the exterior walls and the exterior surface of the corridor wall enclosing and abutting the unit. 6. Calculation of balcony area is measured as the area bounded by the center lines of demising or party walls separating one unit from another unit, the outermost face of the enclosing guard and the external face of the site abutting the balcony. 7. The units are measured at level 10 in the building. Columns above this level may reduce in size, while the floors below may increase in size.

tower 01-podium  
 level 01  
 suite 02

## 1 bedroom

	sq m	sq ft
suite area:	74.08	797
terrace area:	40.08	431
total area:	114.16	1,229

standpoint



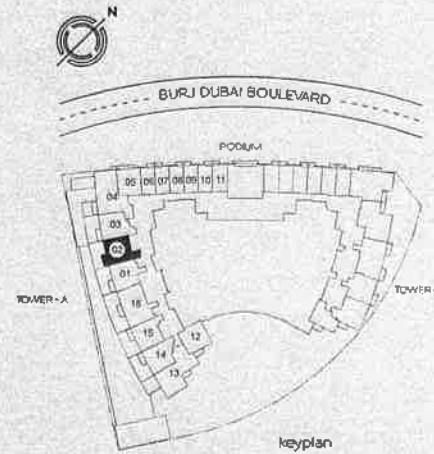
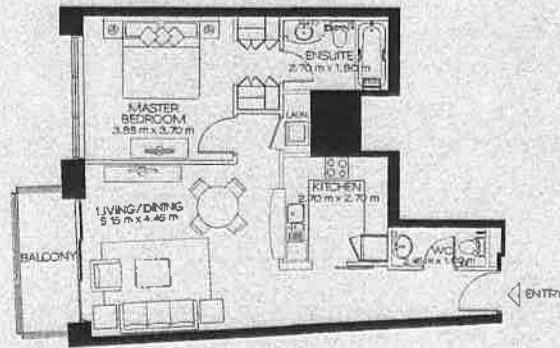
note: 1. All room dimensions are in imperial and measured to structural elements and exclude wall finishes and construction tolerances. 2. All dimensions have been provided by our consultant architects. 3. All materials, finishes and drawings are approximate information subject to change without notice. 4. Actual suite area may vary from the stated area. Drawings not to scale E&S. The developer reserves the right to make revisions. 5. Calculation of suite area is measured as the area bounded by the center line of demising or party walls separating one unit from another unit, the exterior walls, and the exterior surface of the corridor wall enclosing and abutting the unit. 6. Calculation of balcony area is measured as the area bounded by the center lines of demising or party walls separating one unit from another unit, the outermost face of the existing guard and the external face of the slab abutting the balcony. 7. The suites are measured at level 10 in the building. Columns above this level may reduce in size, while the floors below may increase in size.

tower 01-podium  
 level 02 to 04  
 suite 02

## 1 bedroom

	sqm	sq ft
suite area:	74.08	797
balcony area:	6.28	68
total area:	80.36	865

standpoint



note: 1. All room dimensions are in imperial and measured to structural elements and exclude wall finishes and construction tolerances. 2. All dimensions have been provided by our consultant architects. 3. All materials, dimensions and drawings are of approximate information subject to change without notice. 4. Actual suite area may vary from the stated area. Drawings not to scale E&SO. The developer reserves the right to make revisions. 5. Calculation of suite area is measured as the area bounded by the center line of demising or party walls separating one unit from another unit, the exterior walls, and the exterior surface of the curtain wall enclosing and abutting the unit. 6. Calculation of balcony area is measured as the area bounded by the center line of demising or party walls separating one unit from another unit, the outermost face of the enclosing guard and the external face of the side abutting the balcony. 7. The units are measured at level 10 in the building. Columns above this level may reduce in size while the floors below may increase in size.

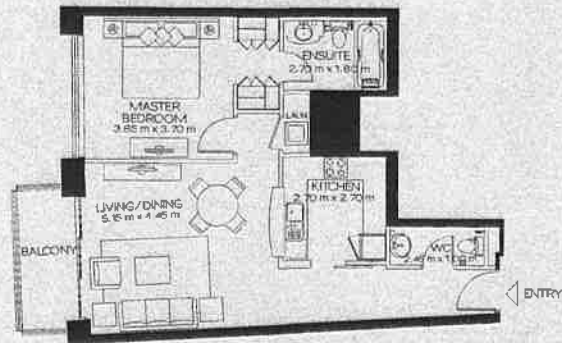


tower 01  
 level 05 to 23  
 suite 02

## 1 bedroom

	sq m	sq ft
suite area:	74.08	797
balcony area:	6.28	68
total area:	80.36	865

standpoint



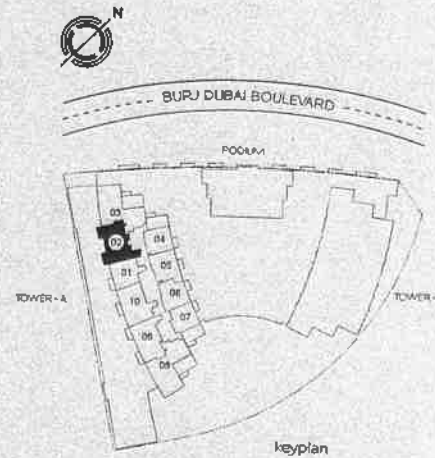
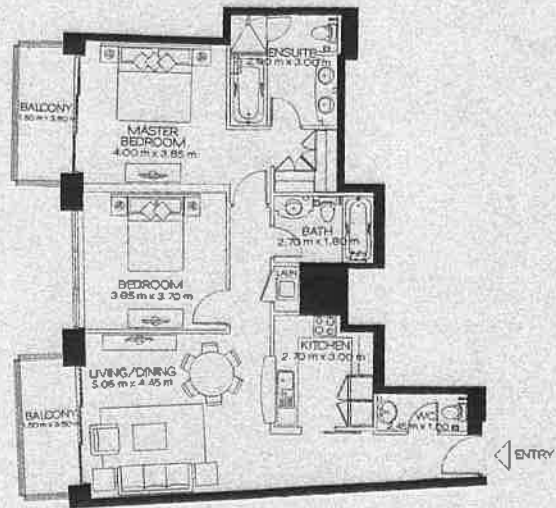
note 1. All room dimensions are in meters and measured to structural elements and exclude wall finishes and construction tolerances. 2. All dimensions have been provided by our consultant and correct. 3. All materials, dimensions and drawings are approximate. Information subject to change without notice. 4. Actual suite area may vary from the stated area. Drawings not to scale E&SO. The developer reserves the right to make revisions. 5. Calculation of suite area is measured as the area bounded by the center line of demising or party walls separating one unit from another unit, the exterior walls, and the exterior surface of the corridor wall enclosing and abutting the unit. 6. Calculation of balcony area is measured as the area bounded by the center line of demising or party walls separating one unit from another unit, the outermost face of the enclosing guard and the external face of the site abutting the balcony. 7. The units are measured at level to in the building. Columns above this level may reduce in size while the floors below may increase in size.

tower 01  
 level 24 to 25  
 suite 02

## 2 bedroom

	sq m	sq ft
suite area:	106.05	1,142
balcony area:	12.56	135
total area:	118.61	1,277

standpoint



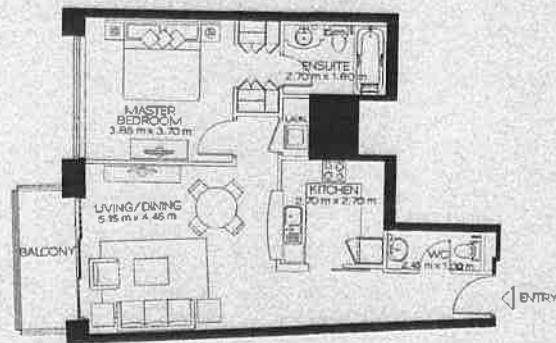
Note 1. All room dimensions are in imperial and metric and to structural elements and exclude wall finishes and construction tolerances. 2. All dimensions have been provided by our consultant architects. 3. All materials, dimensions and drawings are approximate. Information subject to change without notice. 4. Actual suite area may vary from the stated area. Drawings not to scale E&S. The developer reserves the right to make revisions. 5. Calculation of suite area is measured as the area bounded by the center line of demising or party walls separating one unit from another unit, the center walls, and the exterior surface of the corridor wall enclosing and abutting the unit. 6. Calculation of balcony area is measured as the area bounded by the center lines of demising or party walls separating one unit from another unit, the outermost face of the enclosing guard and the external face of the side abutting the balcony. 7. The units are measured at level 10 in the building. Columns above this level may reduce in size, while the floor below may increase in size.

tower 01  
level 26 to 27  
suite 02

## 1 bedroom

	sq m	sq ft
suite area:	74.08	797
balcony area:	6.28	68
total area:	80.36	865

standpoint



note 1. All room dimensions are in imperial and measured to structural elements and exclude wall finishes and construction tolerances. 2. All dimensions have been provided by our consultant architects. 3. All materials, dimensions and drawings are approximate. Information subject to change without notice. 4. Actual suite area may vary from the stated area. Drawings not to scale. E&S.D. The developer reserves the right to make revisions. 5. Calculation of suite area is measured as the area bounded by the center line of demising or party walls separating the unit from adjacent units, the exterior walls, and the exterior surface of the corridor wall enclosing and abutting the unit. 6. Calculation of balcony area is measured as the area bounded by the center lines of demising or party walls separating one unit from another unit, the outermost face of the enclosing guard and the external face of the side abutting the balcony. 7. The units are measured at level to fit the building. Columns above this level may reduce in size while the floors below may increase in size.

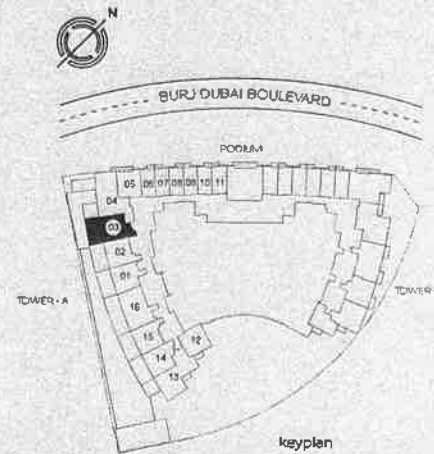
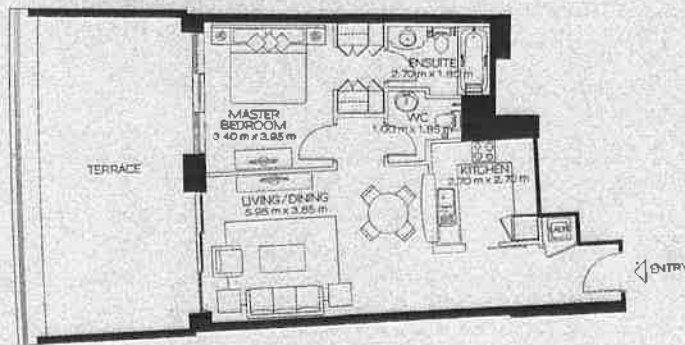


tower 01-podium  
 level 01  
 suite 03

## 1 bedroom

	sq m	sq ft
suite area:	73.63	793
terrace area:	40.08	431
total area:	113.71	1,224

standpoint



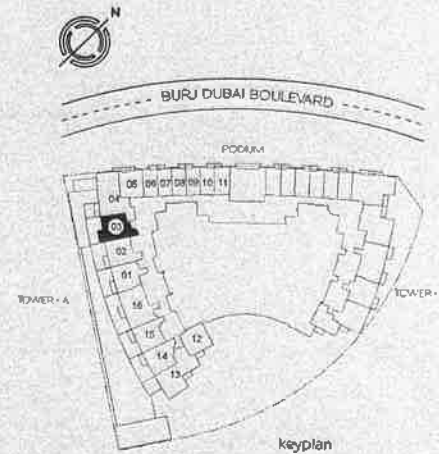
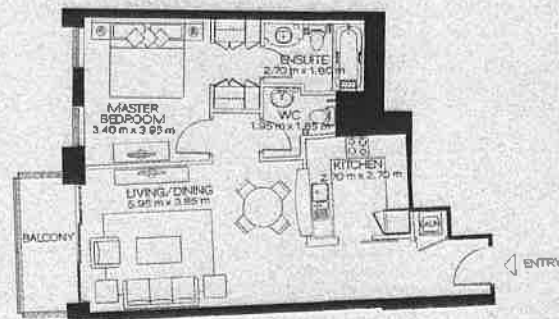
note: 1. All room dimensions are in imperial and referred to structural elements and exclude wall finishes and construction tolerances. 2. All dimensions have been provided by our consultant architects. 3. All materials, dimensioning and drawings are approximate information subject to change without notice. 4. Actual suite area may vary from the stated area. Drawings not to scale E&EO. The developer reserves the right to make revisions. 5. Calculation of suite area is measured as the area bounded by the center line of demising or party walls separating one unit from another unit, the exterior walls, and the exterior surface of the corridor wall enclosing and abutting the unit. 6. Calculation of balcony area is measured as the area bounded by the center lines of demising or party walls separating one unit from another unit, the outermost parapet of the enclosing guard and the external face of the slab abutting the balcony. 7. The units are measured at level 01 in the building. Columns above this level may reduce in size, while the floors below may increase in size.

tower 01-podium  
 level 02 to 04  
 suite 03

## 1 bedroom

	sq m	sq ft
suite area:	73.63	793
balcony area:	6.28	68
total area:	79.91	860

standpoint



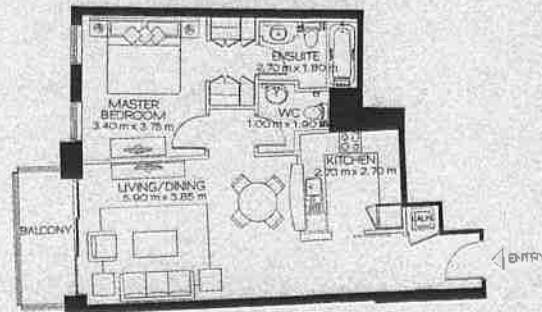
note 1. All room dimensions are in imperial and measured to structural elements and exclude wall finishes and construction tolerances. 2. All dimensions have been provided by our consultant architects. 3. All materials, dimensions and drawings are approximate. Information subject to change without notice. 4. Actual suite area may vary from the stated area. Drawings not to scale. E&B. The developer reserves the right to make revisions. 5. Calculation of suite area is measured as the area bounded by the center line of bearing or party walls separating one unit from another unit, the exterior walls, and the exterior surface of the corridor wall enclosing and abutting the unit. 6. Calculation of balcony area is measured as the area bounded by the center lines of bearing or party walls separating one unit from another unit, the outermost face of the enclosing guard and the external face of the site abutting the balcony. 7. The units are measured at level 10 in the building. Columns above this level may reduce in size, while the floors below may increase in size.

tower 01  
level 05 to 23  
suite 03

## 1 bedroom

	sq m	sq ft
suite area:	73.58	792
balcony area:	6.28	68
total area:	79.86	860

standpoint



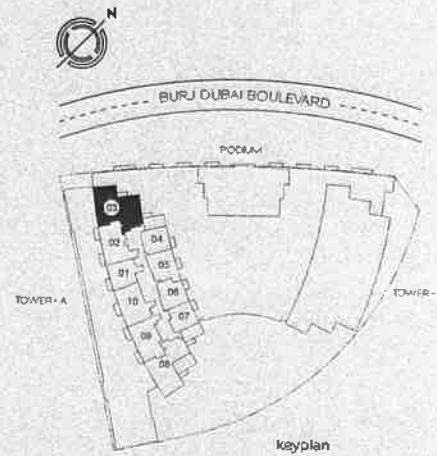
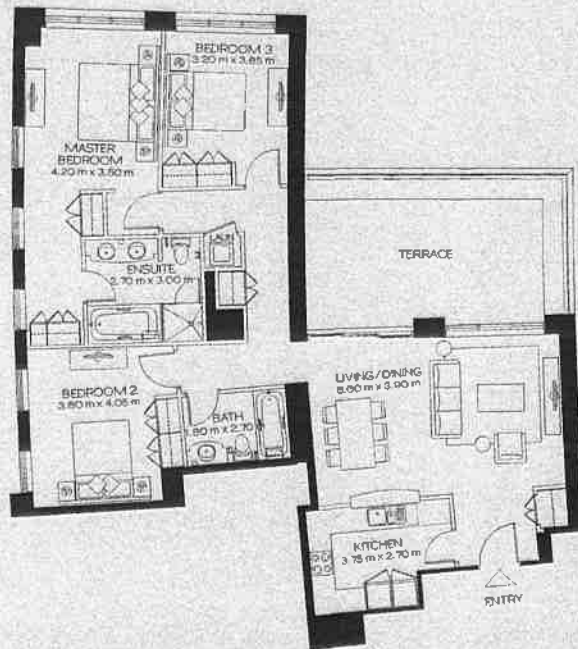
note: 1. All room dimensions are in imperial and measured to structural elements and exclude wall finishes and construction tolerances. 2. All dimensions have been provided by our consultant architects. 3. All material dimensions and drawings are approximate information subject to change without notice. 4. Actual site area may vary from the stated area. Drawings not to scale E&S. The developer reserves the right to make revisions. 5. Calculation of suite area is measured as the area bounded by the center line of demising or party walls separating one unit from another unit, the exterior walls and the exterior surface of the corridor wall enclosing and abutting the unit. 6. Calculation of balcony area is measured as the area bounded by the center lines of demising or party walls separating one unit from another unit, the outermost face of the enclosing guard and the external face of the site abutting the balcony. 7. The units are measured at level 10 in the building. Columns above this level may reduce in size while the floors below may increase in size.

tower 01  
level 24  
suite 03

### 3 bedroom

	sq m	sq ft
suite area:	139.32	1,500
terrace area:	28.53	307
total area:	167.85	1,807

standpoint



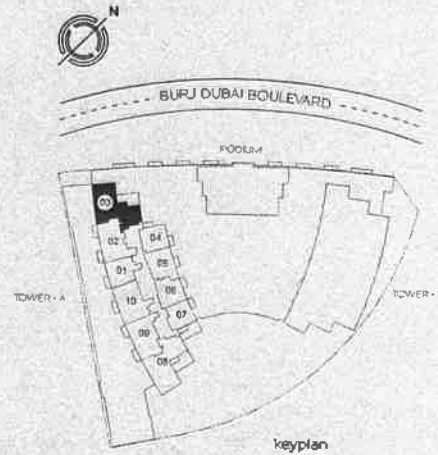
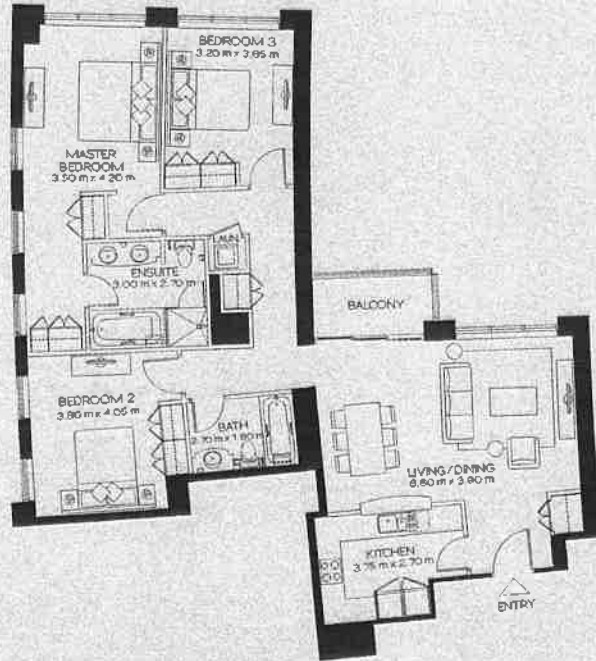
note: 1. All room dimensions are in Imperial and measured to structural elements and exclude wall finishes and construction tolerances. 2. All dimensions have been provided by our consultant architects. 3. All materials, dimensions and drawings are approximate. Information subject to change without notice. 4. Actual suite area may vary from the stated area. Drawings not to scale E&S0. The developer reserves the right to make revisions. 5. Calculation of suite area is measured as the area bounded by the center line of demising or party walls separating one unit from another unit, the exterior walls and the exterior surface of the corridor wall enclosing and abutting the unit. 6. Calculation of balcony area is measured as the area bounded by the center lines of demising or party walls separating one unit from another unit, the outermost face of the existing guard and the external face of the side abutting the balcony. 7. The units are measured at level 10 in the building. Columns above this level may reduce in size while the floors below may increase in size.

tower 01  
level 25  
suite 03

### 3 bedroom

	sq m	sq ft
suite area:	139.32	1,500
balcony area:	6.28	68
total area:	145.60	1,567

standpoint



note 1. All room dimensions are in imperial and measured to structural elements and exclude wall finishes and construction tolerances. 2. All dimensions have been provided by our consultant architects. 3. All materials, dimensions and drawings are approximate information subject to change without notice. 4. Actual suite area may vary from the stated area. Drawings not to scale E&B. The developer reserves the right to make revisions. 5. Calculation of suite area is measured as the area bounded by the center line of demising or party walls separating one unit from another unit, the exterior walls and the exterior surface of the corridor wall enclosing and abutting the unit. 6. Calculation of balcony area is measured as the area bounded by the center lines of demising or party walls separating one unit from another unit, the outermost face of the locking guard and the external face of the site abutting the balcony. 7. The units are measured at level 10 in the building. Columns above this level may reduce in size while the floors below may increase in size.

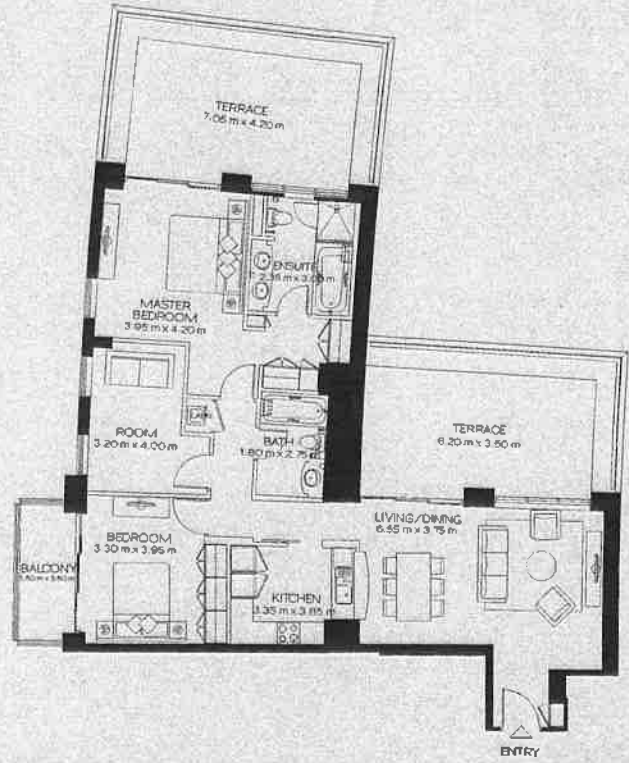


tower 01  
level 26  
suite 03

## 2 bedroom + room

	sq m	sq ft
suite area:	127.16	1,369
terrace/bal. area:	67.39	725
total area:	194.55	2,094

standpoint



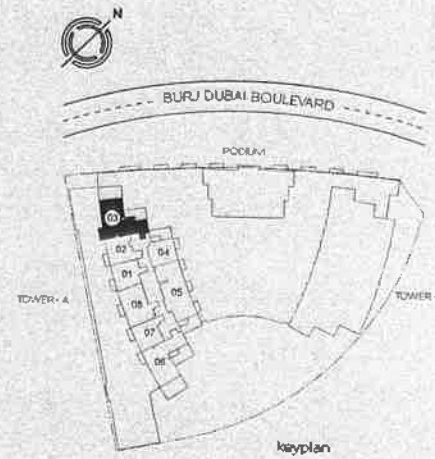
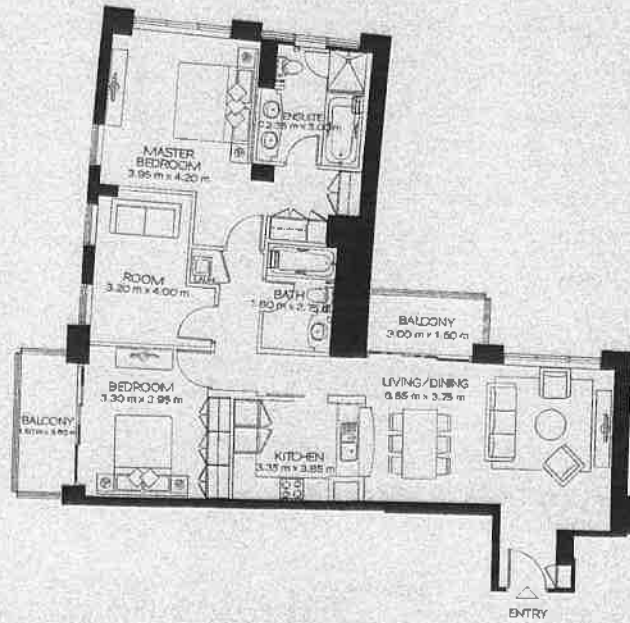
note 1. All room dimensions are in imperial and referred to structural elements and exclude wall finishes and construction tolerances. 2. All orientations have been provided by our consultant architects. 3. All materials, dimensions and drawings are approximate. Information subject to change without notice. 4. Actual suite area may vary from the stated area. Drawings not to scale. 5. The developer reserves the right to make revisions. 6. Calculation of suite area is measured as the area bounded by the center line of demising or party walls separating one unit from another unit, the exterior walls and the exterior surface of the corridor wall enclosing and abutting the unit. 7. Calculation of balcony area is measured as the area bounded by the center lines of demising or party walls separating one unit from another unit, the outermost face of the windbreak guard and the external face of the side abutting the balcony. 8. The units are measured at level 10 in the building. Columns above this level may reduce in size, while the floor below may increase in size.

tower 01  
level 27  
suite 03

## 2 bedroom + room

	sq m	sq ft
suite area:	127.16	1,369
balcony area:	11.15	120
total area:	138.31	1,489

Standpoint



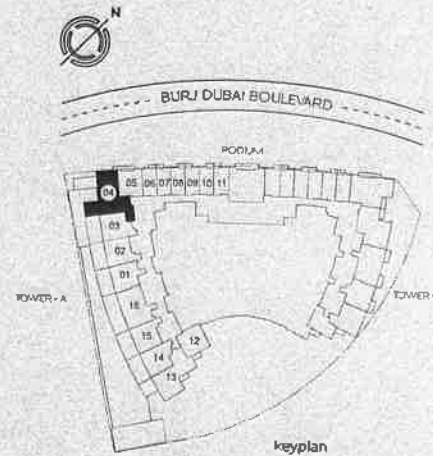
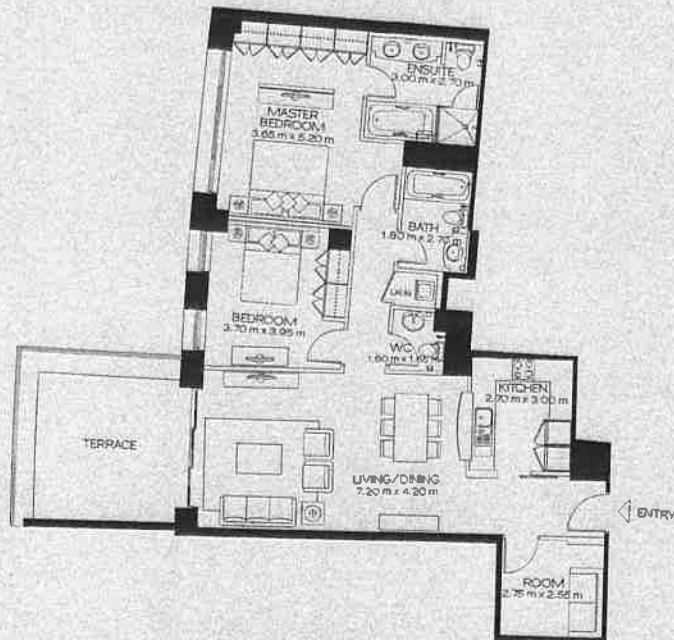
note: 1. All room dimensions are in imperial and measured to structural elements and exclude wall finishes and construction tolerances. 2. All dimensions have been provided by our consultant architects. 3. All materials, dimensions and drawings are approximate information subject to change without notice. 4. Actual suite areas may vary from the stated area. Drawings not to scale E&E. The developer reserves the right to make revisions. 5. Calculation of suite area is measured as the area bounded by the center line of demising or party walls separating one unit from another unit, the exterior walls, and the exterior surface of the corridor or landing and abutting the unit. 6. Calculation of balcony area is measured as the area bounded by the center lines of demising or party walls separating one unit from another unit, the outermost face of the enclosing guard and the external face of the site abutting the balcony. 7. The units are measured at level 10 in the building. Columns above this level may reduce in size, while the floors below may increase in size.

tower O1-podium  
 level O1  
 suite O4

## 2 bedroom + room

	sq m	sq ft
suite area:	123.78	1,332
terrace area:	21.66	233
total area:	145.46	1,566

Standpoint



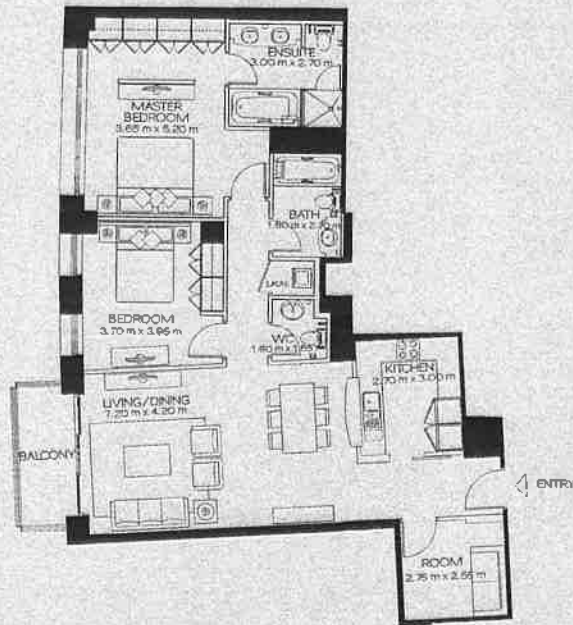
note 1. All room dimensions are in imperial and measured to structural elements and exclude wall finishes and construction tolerances. 2. All orientations have been provided by our consultant architects. 3. All materials, dimensions and drawings are approximations. Information subject to change without notice. 4. Actual suite area may vary from the stated area. Drawings not to scale. E&S. The developer reserves the right to make revisions. 5. Calculation of suite area is measured as the area bounded by the center line of demising or party walls separating one unit from another unit, the exterior walls, and the exterior surface of the corridor wall enclosing and abutting the unit. 6. Calculation of balcony area is measured as the area bounded by the center lines of demising or party walls separating one unit from another unit, the outmost face of the enclosing guard and the external face of the site abutting the balcony. 7. The units are measured at level 10 in the building. Columns above this level may reduce in size, while the floor below may increase in size.

tower O1-podium  
level O2 to O4  
suite O4

## 2 bedroom + room

	sq m	sq ft
suite area:	123.78	1,332
balcony area:	6.28	68
total area:	130.06	1,400

standpoint



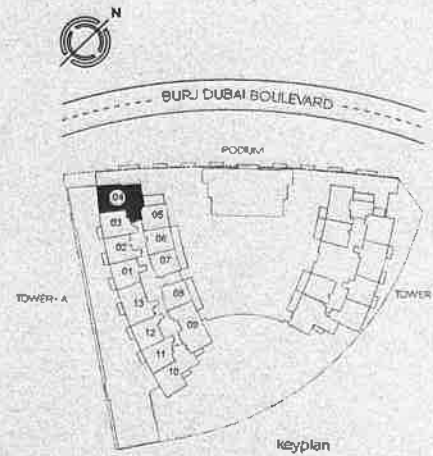
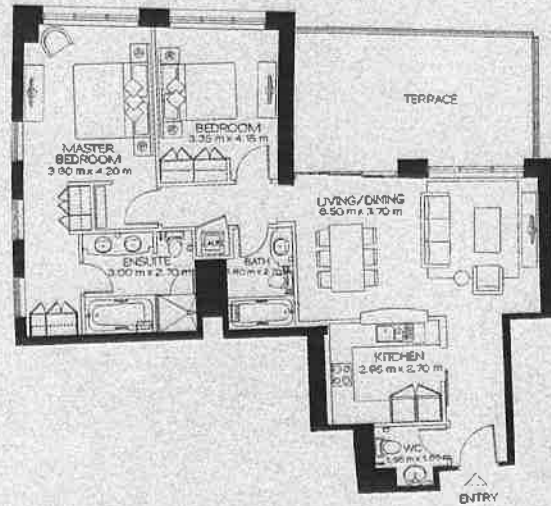
note 1. All room dimensions are Imperial and measured to structural elements and exclude wall finishes and construction tolerances. 2. All dimensions have been provided by our consultant architects. 3. All materials, dimensions and drawings are approximate information subject to change without notice. 4. Actual site area may vary from the stated area. Drawings not to scale E&B. The developer reserves the right to make revisions. 5. Calculation of suite area is measured as the area bounded by the center line of demising or party walls separating one unit from another unit, the exterior walls and the exterior surface of the corridor wall enclosing and abutting the unit. 6. Calculation of balcony area is measured as the area bounded by the center lines of demising or party walls separating one unit from another unit, the outermost face of the enclosing guard and the external face of the site abutting the balcony. 7. The units are measured at level 10 in the building. Columns above this level may reduce in size, while the floors below may increase in size.

tower 01  
level 05  
suite 04

## 2 bedroom

	sq m	sq ft
suite area:	114.59	1,233
terrace area:	24.21	261
total area:	138.80	1,494

standpoint



note 1. All room dimensions are in imperial and measured to structural elements and exclude wall finishes and construction tolerances. 2. All dimensions have been provided by our consultant architects. 3. All materials, dimensions and drawings are approximate. Information subject to change without notice. 4. Actual suite area may vary from the stated area. Drawings not to scale E&S. The developer reserves the right to make revisions. 5. Calculation of suite area is measured as the area bounded by the center line of demising or party walls separating one unit from another unit, the exterior walls and the exterior surface of the corridor wall enclosing and abutting the unit. 6. Calculation of balcony area is measured as the area bounded by the center line of demising or party walls separating one unit from another unit, the outermost face of the enclosing guard and the external face of the site abutting the balcony. 7. The units are measured at level 10 in the building. Columns above the level may reduce in size, while the floors below may increase in size.

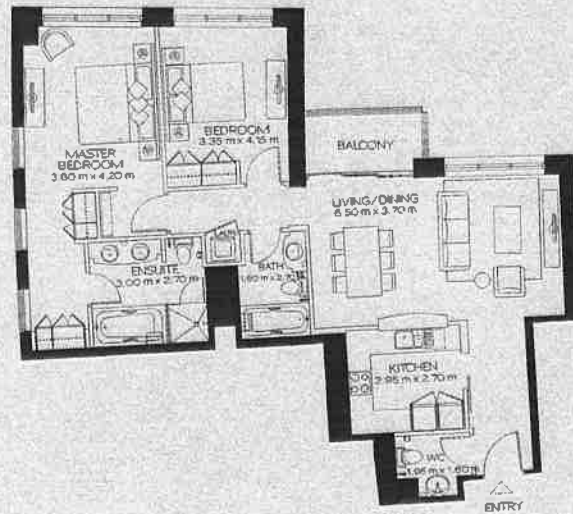


tower 01  
 level 06 to 21  
 suite 04

## 2 bedroom

	sq m	sq ft
suite area:	114.59	1,233
balcony area:	4.87	52
total area:	119.46	1,286

standpoint



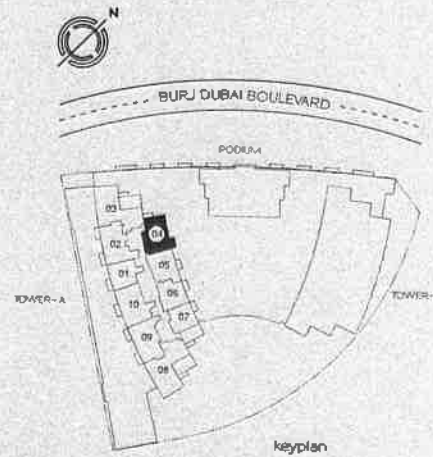
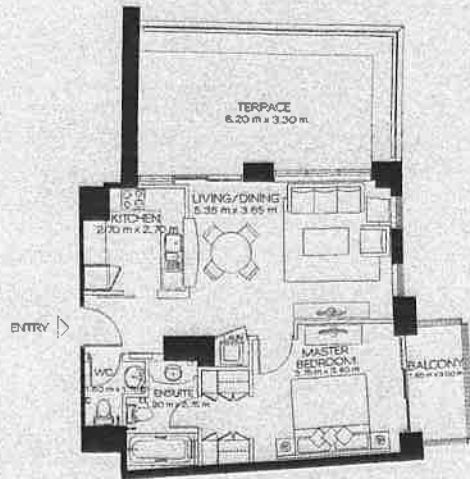
note: 1. All room dimensions are in imperial and measured to structural elements and exclude wall finishes and construction tolerances. 2. All dimensions have been provided by our consultant architects. 3. All imperial dimensions and drawings are approximate information subject to change without notice. 4. Actual suite area may vary from the stated area. Drawings not to scale E&B. The developer reserves the right to make revisions. 5. Calculation of suite area is measured as the area bounded by the center line of demising or party walls separating one unit from another unit, the exterior walls and the exterior surface of the common wall enclosing and abutting the unit. 6. Calculation of balcony area is measured as the area bounded by the center line of demising or party walls separating one unit from another unit, the outermost face of the enclosing guard and the external face of the side abutting the balcony. 7. The units are measured at level 10 in the building. Columns above this level may reduce in size while the floors below may increase in size.

tower 01  
level 24  
suite 04

## 1 bedroom

	sq m	sq ft
suite area:	65.97	710
terrace/bal. area:	32.50	350
total area:	98.47	1,060

standpoint



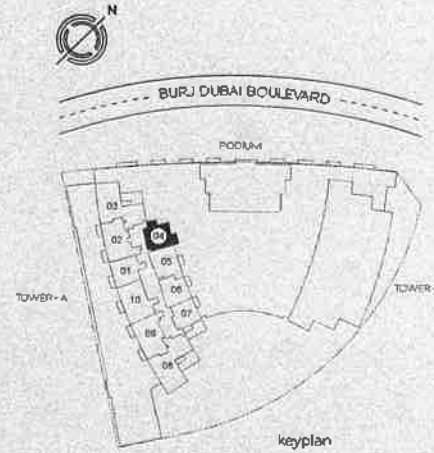
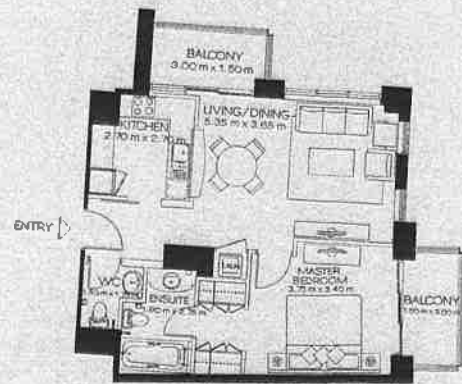
note: 1. All room dimensions are in Imperial and measured to structural elements and exclude wall finishes and construction tolerances. 2. All dimensions have been provided by our consultant architects. 3. All materials, dimensions and drawings are approximate information subject to change without notice. 4. Actual suite area may vary from the stated area. Drawings not to scale E&SO. The developer reserves the right to make revisions. 5. Calculation of suite area is measured as the area bounded by the center line of demising or party walls separating one unit from another unit, the exterior walls, and the exterior surface of the corridor wall enclosing and abutting the unit. 6. Calculation of balcony area is measured as the area bounded by the center line of demising or party walls separating one unit from another unit, the outermost face of the enclosing guard and the external face of the site abutting the balcony. 7. The units are measured at level 10 in the building. Columns above this level may reduce in size, while the floors below may increase in size.

tower 01  
level 25  
suite 04

## 1 bedroom

	sq.m	sq.ft
suite area:	65.97	710
balcony area:	10.25	110
total area:	76.22	820

standpoint



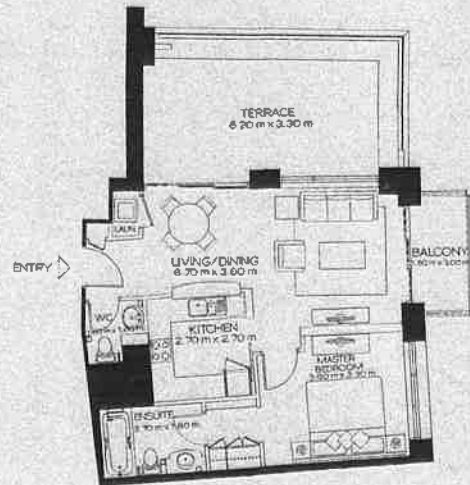
NOTE: 1. All room dimensions are in imperial and measured to structural elements and exclude wall finishes and construction tolerances. 2. All dimensions have been provided by our consultant architects. 3. All materials, dimensions and drawings are approximate information subject to change without notice. 4. Actual suite area may vary from the stated area. Drawings not to scale E&SD. The developer reserves the right to make revisions. 5. Calculation of suite area is measured as the area bounded by the center line of corridor or party walls separating one unit from another unit, the exterior walls, and the exterior face of the corridor wall enclosing and abutting the unit. 6. Calculation of balcony area is measured as the area bounded by the center lines of corridor or party walls separating one unit from another unit, the outermost face of the enclosing guard and the external face of the side abutting the balcony. 7. The units are measured at level 10 in the building. Columns above this level may reduce in size, while the floors below may increase in size.

tower 01  
level 26  
suite 04

## 1 bedroom

	sq m	sq ft
suite area:	65.75	708
terrace/bal. area:	32.50	350
total area:	98.25	1,058

standpoint



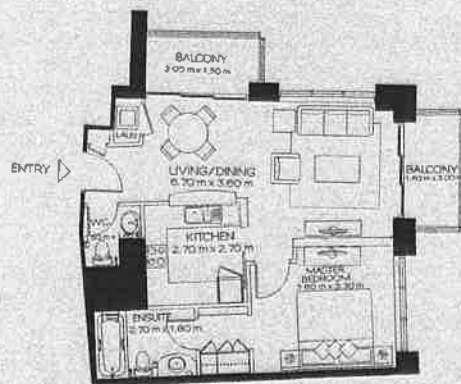
notes: 1. All room dimensions are in imperial and measured to structural elements and exclude wall finishes and construction tolerances. 2. All dimensions have been provided by our consultant architects. 3. All materials, dimensions and drawings are approximate, information subject to change without notice. 4. Actual suite area may vary from the stated area. Drawings not to scale E&ED. The developer reserves the right to make revisions. 5. Calculation of suite area is measured as the area bounded by the center line of demising or party walls separating the unit from another unit, the exterior walls, and the exterior surface of the corridor wall enclosing and abutting the unit. 6. Calculation of balcony area is measured as the area bounded by the center lines of demising or party walls separating one unit from another unit, the outermost face of the enclosing guard and the exterior face of the side abutting the balcony. 7. The units are measured at level 10 in the building. Columns above this level may reduce in size, while the floors below may increase in size.

tower 01  
level 27  
suite 04

## 1 bedroom

	sq m	sq ft
suite area:	65.75	708
balcony area:	10.25	110
total area:	76.00	818

standpoint



note: 1. All room dimensions are in metric and measured to structural elements and include wall thickness and construction tolerances. 2. All dimensions have been provided by our consultant architects. 3. All materials, dimensions and drawings are approximate. Information subject to change without notice. 4. Actual suite area may vary from the stated area. Drawings not to scale. E&O. The developer reserves the right to make revisions. 5. Calculation of suite area is measured as the area bounded by the center line of demarcation or party walls separating one unit from another unit, the exterior walls, and the exterior surface of the corridor wall enclosing or abutting the unit. 6. Calculation of balcony area is measured as the area bounded by the center lines of demarcation or party walls separating one unit from another unit, the outermost face of the enclosing guard and the external face of the side abutting the balcony. 7. The units are measured at level 10 in the building. Columns above this level may reduce in size, while the floors below may increase in size.

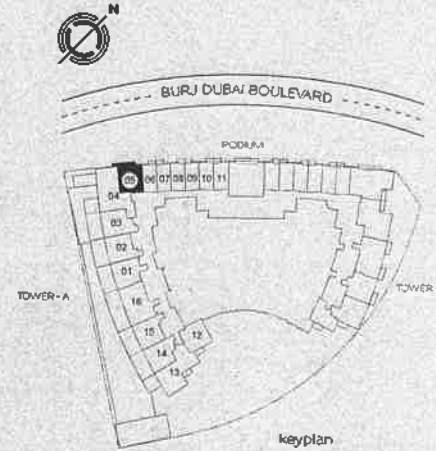


tower 01-podium  
 level 01 to 04  
 suite 05

## 1 bedroom

	sq m	sq ft
suite area:	65.39	704
balcony area:	10.91	117
total area:	76.30	821

standpoint



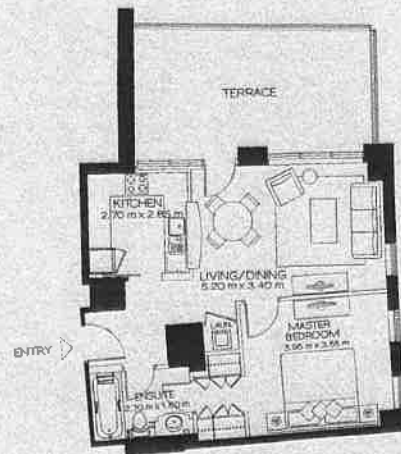
note: 1. All room dimensions are in imperial and measured to structural elements and exclude wall finishes and construction tolerances. 2. All dimensions have been provided by our consultant architect. 3. All materials, dimensions and drawings are approximate. Information is subject to change without notice. 4. Actual suite area may vary from the stated area. Drawings not to scale. E&ED. The developer reserves the right to make revisions. 5. Calculation of suite area is measured as the area bounded by the center line of demising or party walls separating one unit from another unit, the exterior wall, and the exterior surface of the corridor wall enclosing and abutting the unit. 6. Calculation of balcony area is measured as the area bounded by the center line of demising or party walls separating one unit from another unit, the outermost face of the enclosing guard and the external face of the side abutting the balcony. 7. The units are measured at level 10 in the building. Columns above this level may reduce in size while the floors below may increase in size.

tower 01  
level 05  
suite 05

## 1 bedroom

	sq m	sq ft
suite area:	64.58	695
terrace area:	22.88	246
total area:	87.46	941

standpoint



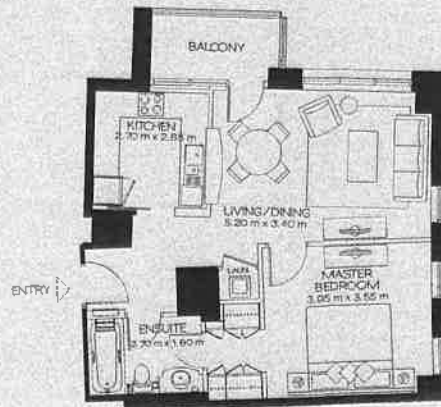
NOTE: 1. All room dimensions are in imperial and measured to structural elements and exclude wall finishes and construction tolerances. 2. All dimensions have been provided by our consultant architects. 3. All materials, dimensions and drawings are approximate. Information subject to change without notice. 4. Actual suite area may vary from the stated area. Drawings not to scale E&SD. The developer reserves the right to make revisions. 5. Calculation of suite area is measured as the area bounded by the center line of demising or party walls separating one unit from another unit, the exterior walls, and the exterior surface of the corridor wall enclosing and abutting the unit. 6. Calculation of balcony area is measured as the area bounded by the center lines of demising or party walls separating one unit from another unit, the outermost face of the enclosing guard and the external face of the side abutting the balcony. 7. The units are measured at level 10 in the building. Columns above this level may reduce in size, while the floors below may increase in size.

tower 01  
 level 06 to 21  
 suite 05

### 1 bedroom

	sq m	sq ft
suite area:	64.58	695
balcony area:	4.87	52
total area:	69.45	748

standpoint



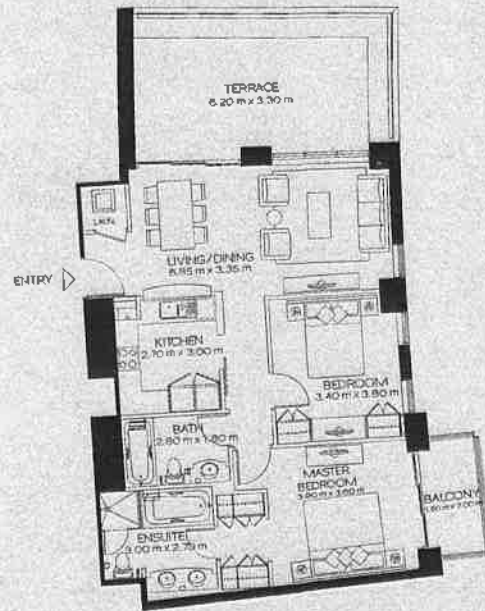
NOTES: 1. All room dimensions are in imperial and measured to structural elements and exclude wall finishes and construction tolerances. 2. All dimensions have been provided by our consultant architects. 3. All materials, dimensions and drawings are approximate. Information subject to change without notice. 4. Actual suite areas may vary from the stated area. Drawings not to scale. E&B. The developer reserves the right to make revisions. 5. Calculation of suite area is measured as the area bounded by the center line of demising or party walls separating one unit from another unit, the exterior walls, and the exterior surface of the corridor wall enclosing and abutting the unit. 6. Calculation of balcony area is measured as the area bounded by the center lines of demising or party walls separating one unit from another unit, the outermost face of the enclosing guard and the external face of the site abutting the balcony. 7. The units are measured at level 10 in the building. Columns above this level may reduce in size, while the floor below may increase in size.

tower 01  
level 22  
suite 05

## 2 bedroom

	sq m	sq ft
suite area:	96.13	1,035
terrace/bal. area:	32.50	350
total area:	128.63	1,385

standpoint



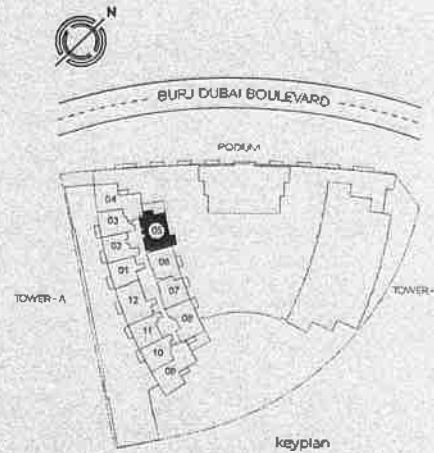
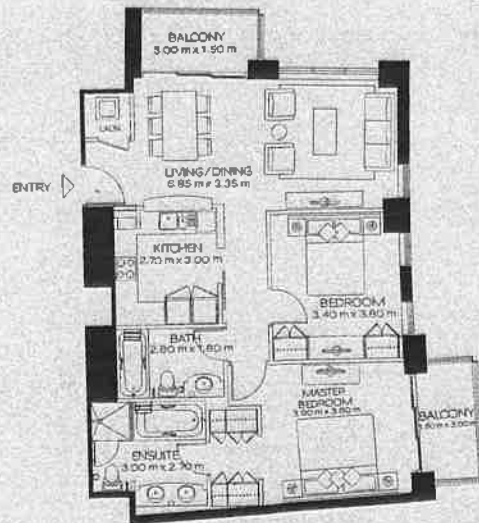
note 1. All room dimensions are in meters and measured to structural elements and exclude wall finishes and construction tolerances. 2. All dimensions have been provided by our consultant architects. 3. All material, dimensions and drawings are approximate. Information subject to change without notice. 4. Actual suite area may vary from the stated area. Drawings not to scale E&SD. The developer reserves the right to make revisions. 5. Calculation of suite area is measured as the area bounded by the center line of demising or party walls separating one unit from another unit, the exterior walls and one exterior surface of the corridor wall enclosing and abutting the unit. 6. Calculation of balcony area is measured as the area bounded by the center lines of demising or party walls separating one unit from another unit, the outermost face of the enclosing guard and the external face of the side abutting the balcony. 7. The units are measured at level 10 in the building. Columns above this level may reduce in size while the floors below may increase in size.

tower 01  
level 23  
suite 05

## 2 bedroom

	sq m	sq ft
suite area:	96.13	1,035
balcony area:	10.25	110
total area:	106.38	1,145

standpoint



note: 1. All room dimensions are in imperial and measured to structural elements and exclude wall finishes and construction tolerances. 2. All dimensions have been provided by our consultant architects. 3. All materials, dimensions and drawings are approximate information subject to change without notice. 4. Actual suite area may vary from the stated area. Drawings not to scale E&B. The developer reserves the right to make revisions. 5. Calculation of suite area is measured as the area bounded by the center line of partition or party walls separating one unit from another unit, the exterior walls and the exterior surface of the corridor wall enclosing and abutting the unit. 6. Calculation of balcony area is measured as the area bounded by the center lines of demising or party walls separating one unit from another unit, the outermost face of the enclosing guard and the external face of the site abutting the balcony. 7. The units are measured at level 10 in the building. Columns above this level may reduce in size while the floors below may increase in size.

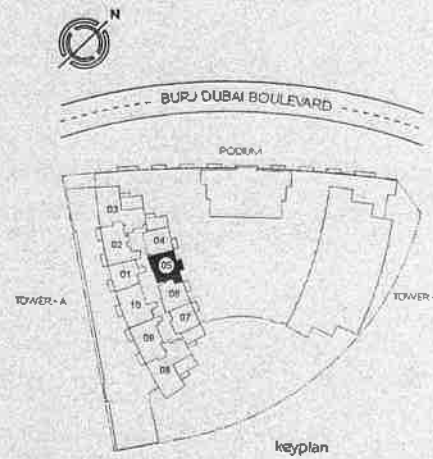
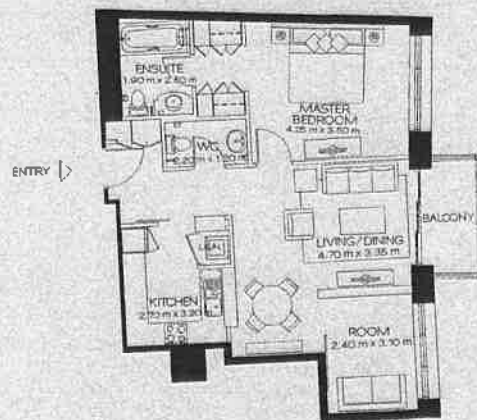


tower 01  
 level 24 to 25  
 suite 05

### 1 bedroom + room

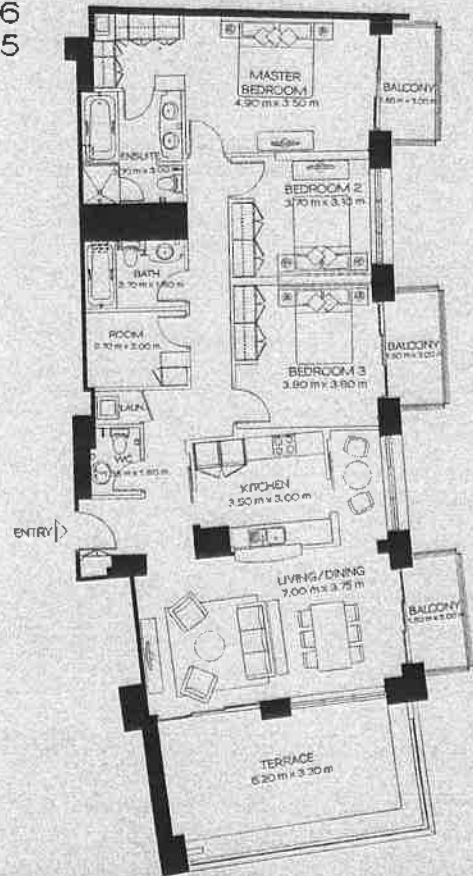
	sq m	sq ft
suite area:	80.45	866
balcony area:	5.38	58
total area:	85.83	924

standpoint



note 1. All room dimensions are in imperial and measured to structural elements and exclude wall finishes and construction tolerances. 2. All dimensions have been provided by our consultant architects. 3. All materials, dimensions and drawings are approximate information subject to change without notice. 4. Actual suite area may vary from the stated area. Drawings not to scale E&B3. The developer reserves the right to make revisions. 5. Calculation of suite area is measured as the area bounded by the center line of demising or party walls separating one unit from another unit, the exterior walls, and the exterior surface of the corridor wall enclosing and abutting the unit. 6. Calculation of balcony area is measured as the area bounded by the center lines of demising or party walls separating one unit from another unit, the outermost face of the enclosing guard and the external face of the side abutting the balcony. 7. The units are measured at level 10 in the building. Columns above this level may reduce in size while the floors below may increase in size.

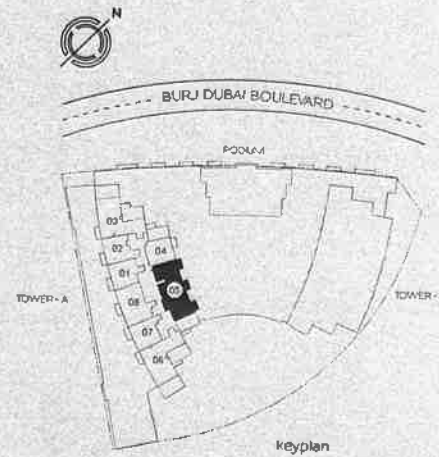
tower 01  
level 26  
suite 05



### 3 bedroom + room

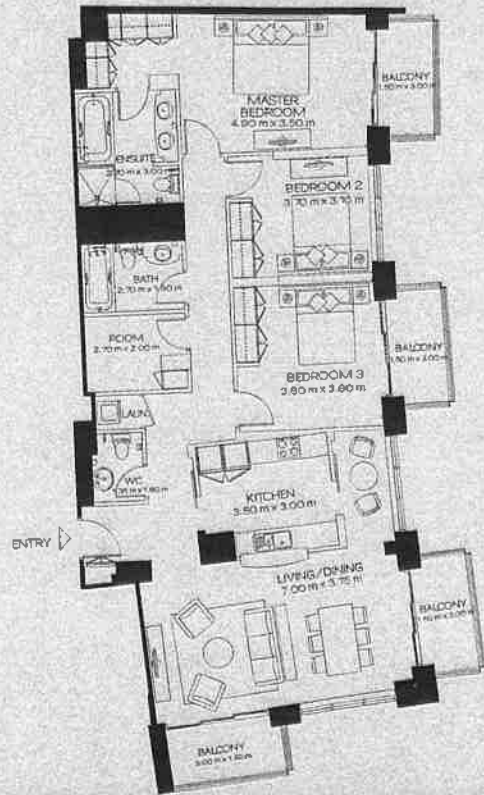
	sq m	sq ft
suite area:	148.22	1,595
terrace / bal. area:	43.26	466
total area:	191.48	2,061

standpoint



Note 1. All room dimensions are in imperial and metred to structural elements and exclude wall finishes and construction tolerances. 2. All dimensions have been provided by our consultant architects. 3. All materials, dimensions and drawings are approximate. Information subject to change without notice. 4. Actual suite area may vary from the stated area. Drawings not to scale E&B. The developer reserves the right to make revisions. 5. Calculation of suite area is measured as the area bounded by the centerline of demising or party walls separating one unit from another unit, the exterior walls, and the exterior surface of the perimeter wall enclosing and abutting the unit. 6. Calculation of balcony area is measured as the area bounded by the centerline of demising or party walls separating one unit from another unit, the outermost face of the enclosing guard and the external face of the side abutting the balcony. 7. The units are measured at level 10 in the building. Columns above this level may reduce in size while the floors below may increase in size.

tower 01  
level 27  
suite 05



### 3 bedroom + room

	Sq m	Sq ft.
suite area:	148.22	1,595
balcony area:	21.01	226
total area:	169.23	1,822

Standpoint



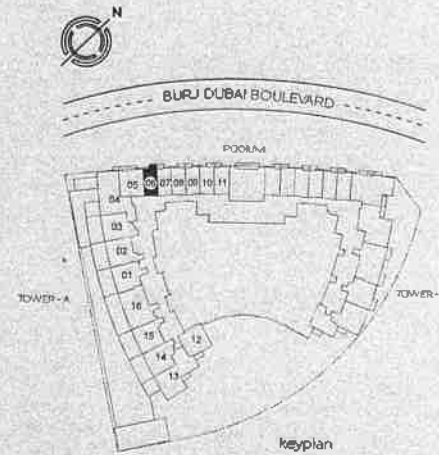
note 1. All room dimensions are in imperial and measured to structural elements and exclude wall finishes and construction tolerances. 2. All dimensions have been provided by our consultant architects. 3. All materials, dimensions and drawings are approximate information subject to change without notice. 4. Actual suite area may vary from the stated area. Drawings not to scale 1:50. The developer reserves the right to make revisions. 5. Calculation of suite area is measured as the area bounded by the center line of dividing or party walls separating one unit from another unit, the exterior walls and the exterior surface of the corridor wall enclosing and abutting the unit. 6. Calculation of balcony area is measured as the area bounded by the center lines of dividing or party walls separating one unit from another unit, the outermost face of the enclosing guard and the external face of the site abutting the balcony. 7. The units are measured at level 10 in the building. Columns above this level may reduce in size while the floors below may increase in size.

tower O1-podium  
 level O1 to O4  
 suite O6

studio

	sq m	sq ft
suite area:	39.45	425
balcony area:	3.91	42
total area:	43.36	467

standpoint



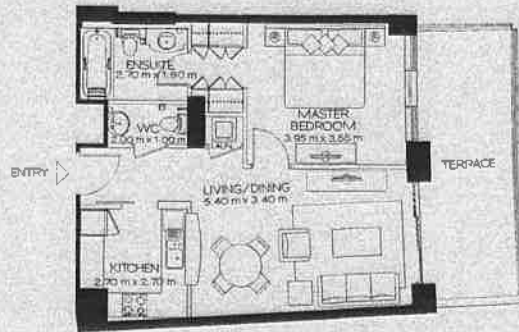
Notes: 1. All room dimensions are in imperial and measured to structural elements and exclude wall finishes and construction tolerances. 2. All dimensions have been provided by our consultant architects. 3. All materials, dimensions and drawings are approximate. Information subject to change without notice. 4. Actual suite area may vary from the stated area. Drawings not to scale E&B. The developer reserves the right to make revisions. 5. Calculation of suite area is measured as the area bounded by the center line of demising or party walls separating one unit from another unit, the exterior walls, and the exterior surface of the corridor wall enclosing and abutting the unit. 6. Calculation of balcony area is measured as the area bounded by the center lines of demising or party walls separating one unit from another unit, the outermost face of the enclosing guard and the external face of the site abutting the balcony. 7. The units are measured at level 10 in the building. Columns above the level may reduce in size, while the floors below may increase in size.

tower 01  
 level 05  
 suite 06

## 1 bedroom

	sqm	sqft
suite area:	64.18	691
terrace area:	17.64	190
total area:	81.82	881

standpoint



note 1. All room dimensions are in imperial and measured to structural elements and exclude wall finishes and construction tolerances. 2. All dimensions have been provided by our consultant architects. 3. All materials, dimensions and drawings are approximate information subject to change without notice. 4. Actual suite area may vary from the stated area. Drawings not to scale (E&S). The developer reserves the right to make revisions. 5. Calculation of suite area is measured as the area bounded by the center line of demising or party walls separating one unit from another unit, the exterior walls, and the exterior surface of the corridor wall enclosing and abutting the unit. 6. Calculation of balcony area is measured as the area bounded by the center lines of demising or party walls separating one unit from another unit, the external side of the enclosing guard and the external face of the site abutting the balcony. 7. The units are measured at level to in the building. Columns above this level may reduce in size, while the floors below may increase in size.



tower 01  
level 06 to 21  
suite 06

## 1 bedroom

	sq m	sq ft
suite area:	64.18	691
balcony area:	5.38	58
total area:	69.56	749

standpoint



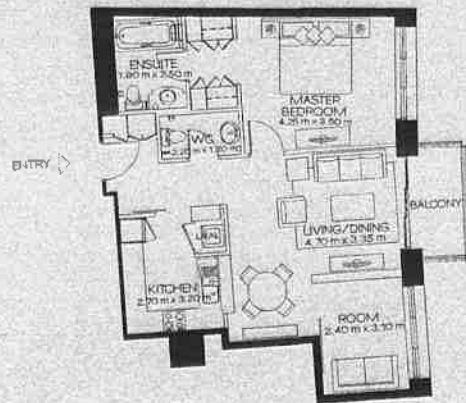
note: 1. All room dimensions are in imperial and measured to structural elements and exclude wall finishes and construction tolerances. 2. All dimensions have been provided by our consultant architects. 3. All materials, dimensions and drawings are approximate information subject to change without notice. 4. Actual suite area may vary from the stated area. Drawings not to scale. E.A.E.C. The developer reserves the right to make revisions. 5. Calculation of suite area is measured as the area bounded by the center line of demising or party walls separating one unit from another unit, the exterior walls and the exterior surface of the corridor well enclosing and abutting the unit. 6. Calculation of balcony area is measured as the area bounded by the center lines of demising or party walls separating one unit from another unit, the outermost face of the enclosing guard and the external face of the slab abutting the balcony. 7. The units are measured at level 10 in the building. Columns above this level may reduce in size, while the floors below may increase in size.

tower 01  
level 22 to 23  
suite 06

## 1 bedroom + room

	sqm	sqft
suite area:	80.45	866
balcony area:	5.38	58
total area:	85.83	924

standpoint



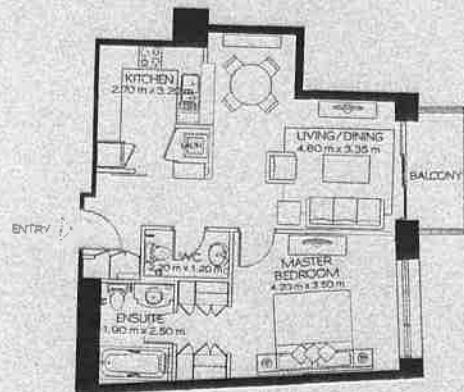
note 1. All room dimensions are in imperial and measured to structural elements and exclude wall finishes and construction tolerances. 2. All dimensions have been provided by our consultant architects. 3. All materials, dimensions and drawings are approximate, information subject to change without notice. 4. Actual suite area may vary from the stated area. Drawings not to scale E&C. The developer reserves the right to make revisions. 5. Calculation of suite area is measured as the area bounded by the center line of demising or party walls separating one unit from another unit, the exterior walls and the exterior surface of the corridor wall enclosing and abutting the unit. 6. Calculation of balcony area is measured as the area bounded by the center line of demising or party walls separating one unit from another unit, the outermost face of the enclosing guard and the external face of the site abutting the balcony. 7. The units are measured at level 10 in the building. Columns above this level may reduce in size, while the floors below may increase in size.

tower 01  
level 24 to 25  
suite 06

### 1 bedroom

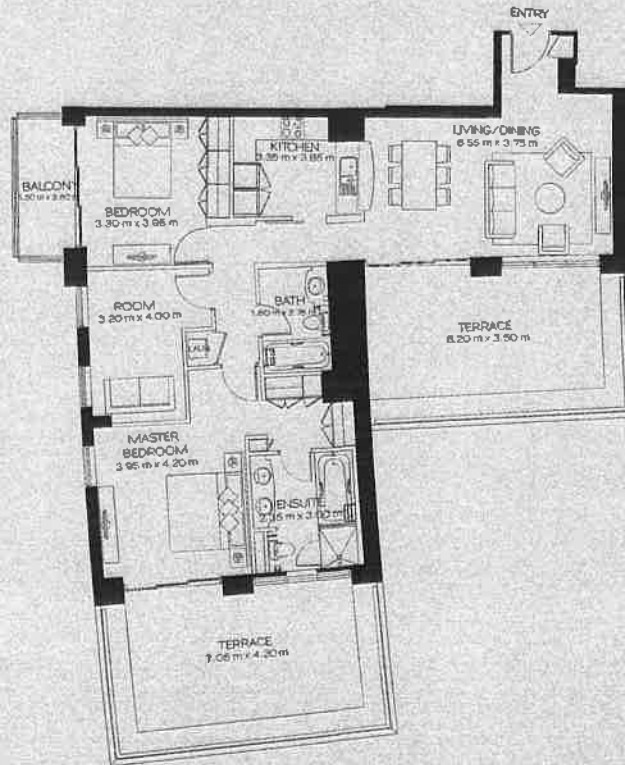
	sq m	sq ft
suite area:	71.17	766
balcony area:	5.38	58
total area:	76.55	824

standpoint



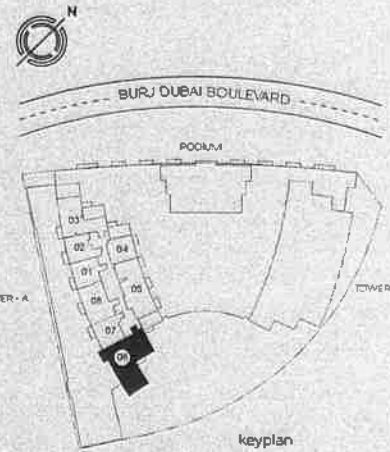
NOTE 1. All room dimensions are in imperial and measured to structural elements and exclude wall finishes and construction tolerances. 2. All dimensions have been provided by our consultant architects. 3. All horizontal dimensions and drawings are approximate information subject to change without notice. 4. Actual suite area may vary from the stated area. Drawings not to scale. 5. The developer reserves the right to make revisions. 6. Calculation of suite area is measured as the area bounded by the center line of demarcation or party walls separating one unit from another unit, the exterior walls and the exterior surface of the corridor wall enclosing and abutting the unit. 7. Calculation of balcony area is measured as the area bounded by the center lines of demarcation or party walls separating one unit from another unit, the outermost face of the enclosing guard and the external face of the site abutting the balcony. 8. The units are measured at level 10 in the building. Columns above the level may reduce in size while the floor below may increase in size.

tower 01  
level 26  
suite 06



## 2 bedroom + room

	sq m	sq ft
suite area:	127.16	1,369
terrace/bal. area:	67.39	725
total area:	194.55	2,094



standpoint

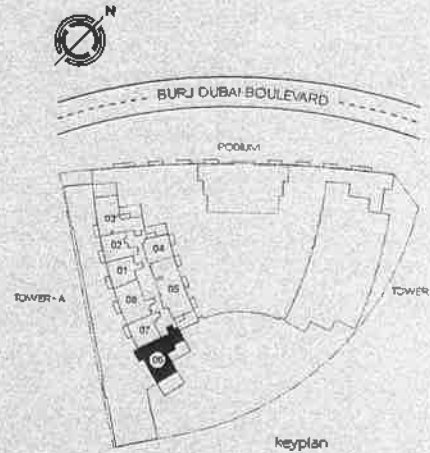
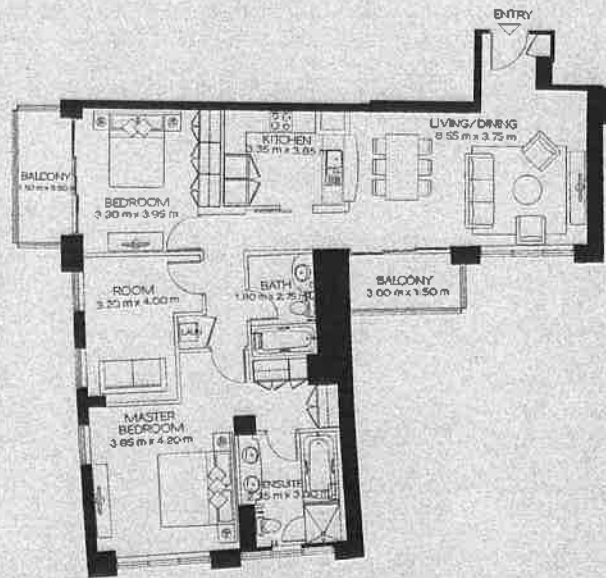
note 1. All room dimensions are in imperial and measured to structural elements and exclude wall finishes and construction tolerances. 2. All dimensions have been provided by our consultant architects. 3. All materials, dimensions and drawings are approximate information subject to change without notice. 4. Actual suite area may vary from the stated area. Drawings not to scale E=30. The developer reserves the right to make revisions. 5. Calculation of suite area is measured as the area bounded by the center line of demising or party walls separating one unit from another unit, the exterior walls, and the exterior surface of the corridor wall enclosing and abutting the unit. 6. Calculation of balcony area is measured as the area bounded by the center lines of demising or party walls separating one unit from another unit, the outermost face of the enclosing guard and the external face of the slab abutting the balcony. 7. The units are measured at level 10 in the building. Columns above this level may reduce in size while the floors below may increase in size.

tower 01  
level 27  
suite 06

## 2 bedroom + room

	sq m	sq ft
suite area:	127.16	1,369
balcony area:	11.15	120
total area:	138.31	1,489

standpoint



note: 1. All room dimensions are in imperial and measured to structural elements and exclude wall finishes and construction tolerances. 2. All dimensions have been provided by our consultant architects. 3. All materials, dimensions and drawings are approximate. Information subject to change without notice. 4. Actual suite area may vary from the stated area. Drawings not to scale E&SO. The developer reserves the right to make revisions. 5. Calculation of suite area is measured as the area bounded by the center line of dividing or party walls separating one unit from another unit, the exterior walls and the exterior surface of the corridor wall enclosing and abutting the unit. 6. Calculation of balcony area is measured as the area bounded by the center lines of dividing or party walls separating one unit from another unit, the external face of the enclosing guard and the external face of the site abutting the balcony. 7. The units are measured at level 10 in the building. Columns above this level may reduce in size, while the floors below may increase in size.

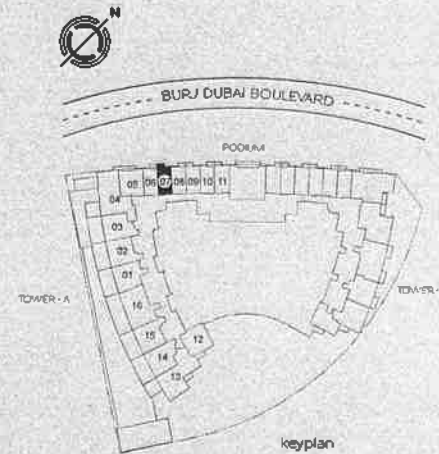


tower 01-podium  
level 01 to 04  
suite 07

studio

	sq m	sq ft
suite area:	39.45	425
balcony area:	3.91	42
total area:	43.36	467

standpoint



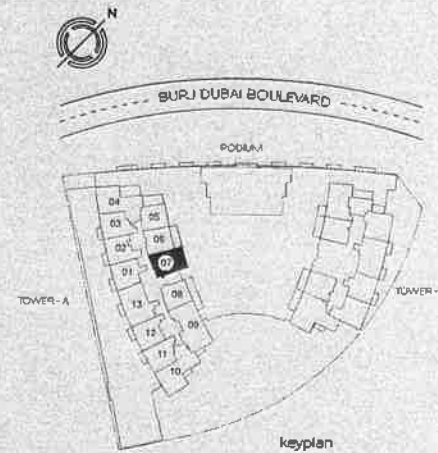
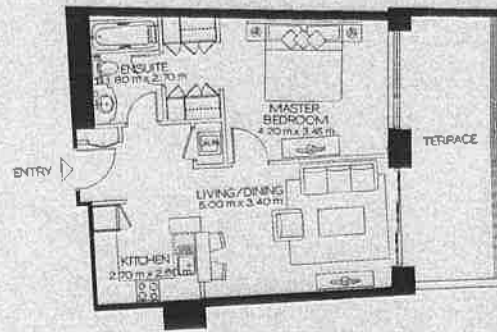
note: 1. All room dimensions are in imperial and measured to structural elements and exclude wall finishes and construction tolerances. 2. All elevations have been provided by our consultant architects. 3. All materials, dimensions and drawings are approximate. Information subject to change without notice. 4. Actual suite area may vary from the stated area. Drawings not to scale E&SO. The developer reserves the right to make revisions. 5. Calculation of suite area is measured as the area bounded by the center line of demising or party walls separating one unit from another unit, the exterior walls and the exterior surface of the common wall enclosing and abutting the unit. 6. Calculation of balcony area is measured as the area bounded by the center lines of demising or party walls separating one unit from another unit, the outermost face of the enclosing guard and the external face of the side abutting the balcony. 7. The units are measured at level 10 in the building columns above this level may reduce in size, while the floors below may increase in size.

tower 01  
level 05  
suite 07

## 1 bedroom

	sqm	sqft
suite area:	63.38	682
terrace area:	18.24	196
total area:	81.62	879

standpoint



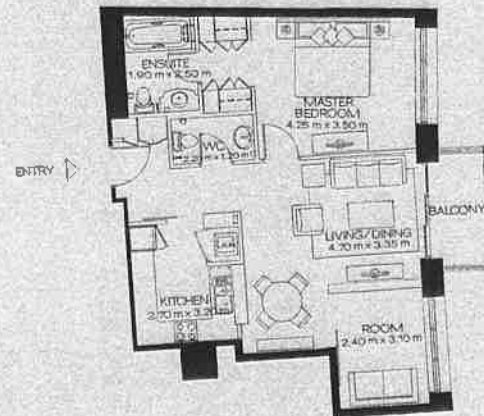
notes: 1. All room dimensions are in moenal and measured to structural elements and exclude wall finishes and construction tolerances. 2. All dimensions have been provided by our consultant architects. 3. All materials, dimensions and drawings are approximate. Information subject to change without notice. 4. Actual situations may vary from the stated area. Drawings not to scale E&S. The developer reserves the right to make revisions. 5. Calculation of suite area is measured as the area bounded by the center line of demising or party walls separating one unit from another unit, the exterior wall and the exterior surface of the corridor wall enclosing and abutting the suite. 6. Calculation of balcony area is measured as the area bounded by the center line of demising or party walls separating one unit from another unit, the outermost face of the enclosing guard and the external face of the side abutting the balcony. 7. The units are measured at level 10 in the building. Columns above this level may reduce in size, while the floors below may increase in size.

tower 01  
 level 06 to 21  
 suite 07

## 1 bedroom + room

	Sq m	Sq ft
suite area:	80.45	866
balcony area:	5.38	58
total area:	85.83	924

standpoint



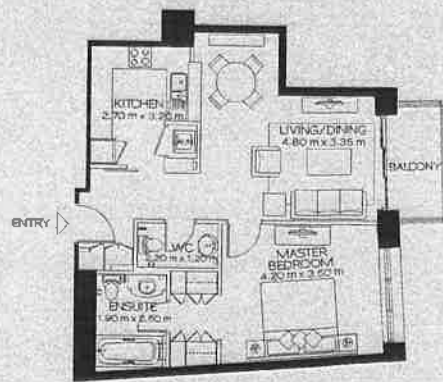
note: 1. All room dimensions are in imperial and measured to structural elements and exclude wall finishes and construction tolerances. 2. All dimensions have been provided by our consultant architects. 3. All imperial dimensions and drawings are approximate information subject to change without notice. 4. Actual suite area may vary from the stated area. Drawings not to scale. E&EO. The developer reserves the right to make revisions. 5. Calculation of suite area is measured as the area bounded by the center line of demising or party walls separating one unit from another unit, the exterior walls, and the exterior surface of the corridor wall enclosing and abutting the unit. 6. Calculation of balcony area is measured as the area bounded by the center line of demising or party walls separating one unit from another unit, the outermost face of the enclosing guard and the external face of the site abutting the balcony. 7. The units are measured at level 10 in the building. Columns above this level may reduce in size while the floors below may increase in size.

tower 01  
 level 22 to 23  
 suite 07

## 1 bedroom

	sq m	sq ft
suite area:	71.17	766
balcony area:	5.38	58
total area:	76.55	824

standpoint



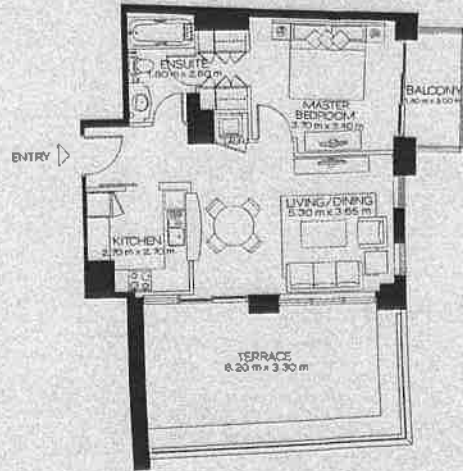
note 1. All room dimensions are in imperial and measured to structural elements and exclude wall finishes and construction tolerances. 2. All dimensions have been provided by our consultant architects. 3. All materials, dimensions and drawings are approximate information subject to change without notice. 4. Actual suite area may vary from the stated area. Drawings not to scale. E&SO. The developer reserves the right to make revisions. 5. Calculation of suite area is measured as the area bounded by the center line of partition or party walls separating one unit from another unit, the exterior walls, and the exterior surface of the corridor wall enclosing and abutting the unit. 6. Calculation of balcony area is measured as the area bounded by the center lines of demising or party walls separating one unit from another unit, the outermost face of the enclosing guard and the exterior face of the site abutting the balcony. 7. The units are measured at level 10 in the building; columns above this level may reduce in size, while the floors below may increase in size.

tower 01  
level 24  
suite 07

## 1 bedroom

	sq m	sq ft
suite area:	63.01	678
terrace/bal. area:	32.50	350
total area:	95.51	1,028

standpoint



note 1. All room dimensions are in imperial and measured to structural elements and exclude wall finishes and construction tolerances. 2. All dimensions have been provided by our consultant architects. 3. All materials, dimensions and drawings are provisional. Information subject to change without notice. 4. Actual suite area may vary from the stated area. Drawings not to scale. E&B. The developer reserves the right to make revisions. 5. Calculation of suite area is measured as the area bounded by the center line of demising or party walls separating one unit from another unit, the exterior walls and the exterior surface of the corridor wall enclosing and abutting the unit. 6. Calculation of balcony area is measured as the area bounded by the center lines of demising or party walls separating one unit from another unit, the outermost face of the enclosing guard and the external face of the side abutting the balcony. 7. The units are measured at level 10 in the building. Columns above this level may reduce in size while the floor below may increase in size.

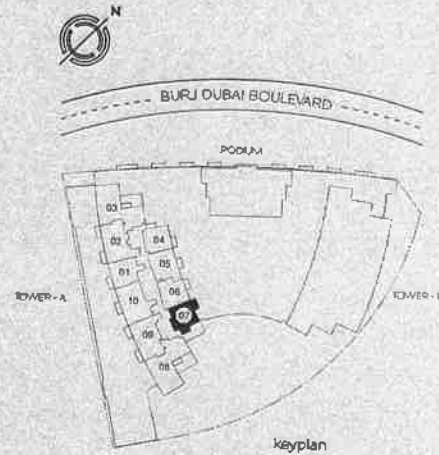
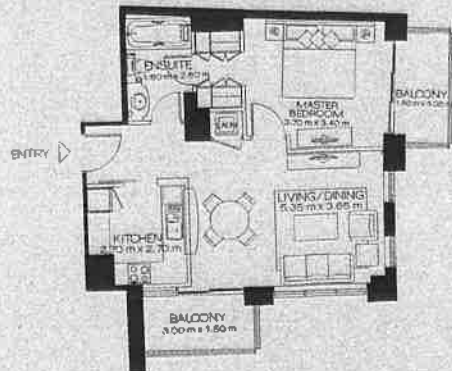


tower 01  
level 25  
suite 07

## 1 bedroom

	sqm	sq ft
suite area:	63.01	678
balcony area:	10.25	110
total area:	73.26	789

standpoint



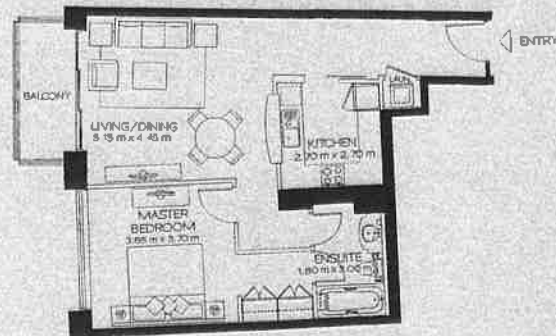
Notes: 1. All room dimensions are in imperial and measured to structural elements and exclude wall finishes and construction tolerances. 2. All dimensions have been provided by our consultant architects. 3. All materials, dimensions and drawings are approximate. Information subject to change without notice. 4. Actual suite area may vary from the stated area. Drawings not to scale E&B. The developer reserves the right to make revisions. 5. Calculation of suite area is measured as the area bounded by the center line of demising or party walls separating one unit from another unit, the exterior walls and the exterior surface of the corridor wall enclosing and abutting the unit. 6. Calculation of balcony area is measured as the area bounded by the center lines of demising or party walls separating one unit from another unit, the outermost face of the enclosing guard and the external face of the site abutting the balcony. 7. The units are measured at level 10 in the building. Columns above this level may reduce in size, while the floors below may increase in size.

tower 01  
level 26 to 27  
suite 07

## 1 bedroom

	sq m	sq ft
suite area:	74.15	798
balcony area:	6.28	68
total area:	80.43	866

standpoint



note: 1. All room dimensions are in imperial and measured to structural elements and exclude wall finishes and construction tolerances. 2. All dimensions have been provided by our consultant architects. 3. All materials, dimensions and drawings are approximate information subject to change without notice. 4. Actual suite area may vary from the stated area. Drawings not to scale (E&BD). The developer reserves the right to make revisions. 5. Calculation of suite area is measured as the area bounded by the center line of demising or party walls separating the unit from another unit, the exterior walls and the exterior surface of the corridor wall enclosing and abutting the unit. 6. Calculation of balcony area is measured as the area bounded by the center lines of demising or party walls separating one unit from another unit, the outermost face of the enclosing guard and the external face of the site abutting the balcony. 7. The units are measured at level 10 in the building. Columns above this level may reduce in size while the floors below may increase in size.

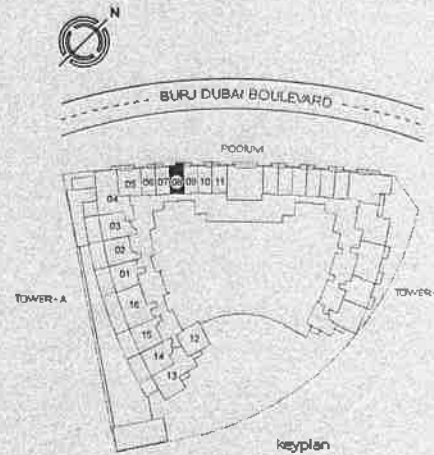
tower 01-podium  
level 01 to 04  
suite 08



## studio

	sq m	sq ft
suite area:	39.45	425
balcony area:	3.91	42
total area:	43.36	467

## standpoint



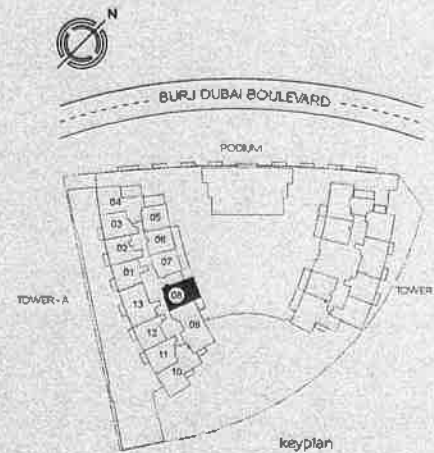
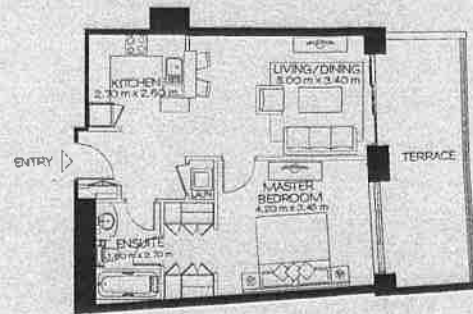
note: 1. All room dimensions are in imperial and measured to structural elements and exclude wall finishes and construction tolerances. 2. All dimensions have been provided by our consultant architects. 3. All materials, dimensions and drawings are approximate information subject to change without notice. 4. Actual suite area may vary from the stated area. Drawings not to scale. E&OA. The developer reserves the right to make revisions. 5. Calculation of suite area is measured as the area bounded by the center line of demising or party walls separating one unit from another unit, the exterior walls, and the exterior surface of the corridor wall enclosing and abutting the unit. 6. Calculation of balcony area is measured as the area bounded by the center line of demising or party walls separating one unit from another unit, the outermost foot of the enclosing guard and the external face of the site abutting the balcony. 7. The units are measured at level 10 in the building. Columns above this level may reduce in size while the floors below may increase in size.

tower 01  
level 05  
suite 08

## 1 bedroom

	sq m	sq ft
suite area:	63.38	682
terrace area:	18.24	196
total area:	81.62	879

standpoint



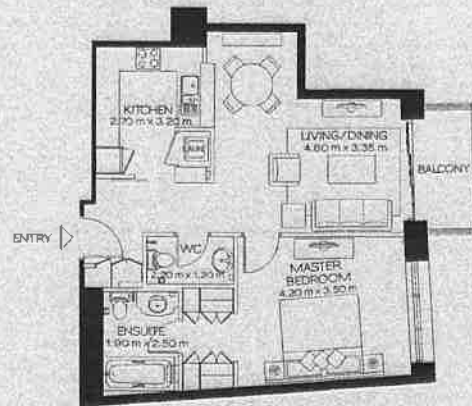
note: 1. All room dimensions are in imperial and measured to structural elements and exclude wall finishes and construction tolerances. 2. All dimensions have been provided by our consultant architects. 3. All materials, dimensions and drawings are approximate, information subject to change without notice. 4. Actual suite area may vary from the stated area; drawings not to scale. E&E.D. The developer reserves the right to make revisions. 5. Calculation of suite area is measured as the area bounded by the center line of demising or party walls separating one unit from another unit, the exterior walls and the exterior surface of the corridor wall enclosing and abutting the unit. 6. Calculation of balcony area is measured as the area bounded by the center lines of demising or party walls separating one unit from another unit, the outermost face of the enclosing guard and the external face of the site abutting the balcony. 7. The units are measured at level 10 in the building. Columns above this level may reduce in size, while the floors below may increase in size.

tower 01  
 level 06 to 21  
 suite 08

## 1 bedroom

	sqm	sqft
suite area:	71.17	766
balcony area:	5.38	58
total area:	76.55	824

standpoint



note: 1. All room dimensions are in imperial and measured to structural elements and exclude wall finishes and construction tolerances. 2. All dimensions have been provided by our consultant architects. 3. All materials, dimensions and drawings are approximate information subject to change without notice. 4. Actual suite area may vary from the stated area. Drawings not to scale E&S. The developer reserves the right to make revisions. 5. Calculation of suite area is measured as the area bounded by the center line of demising or party walls separating one unit from another unit, the exterior walls and the exterior surface of the exterior wall enclosing and abutting the unit. 6. Calculation of balcony area is measured as the area bounded by the center line of demising or party walls separating one unit from another unit, the outermost face of the enclosing guard and the external face of the side abutting the balcony. 7. The units are measured at level 10 in the building. Columns above UNS level may reduce in size, while the floors below may increase in size.

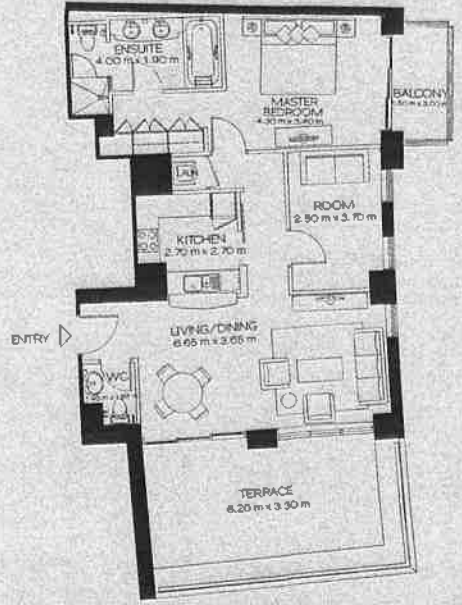


tower 01  
 level 22  
 suite 08

### 1 bedroom + room

	sq.m	sq.ft.
suite area:	91.70	987
terrace/bal. area:	32.50	350
total area:	124.20	1,337

Standpoint



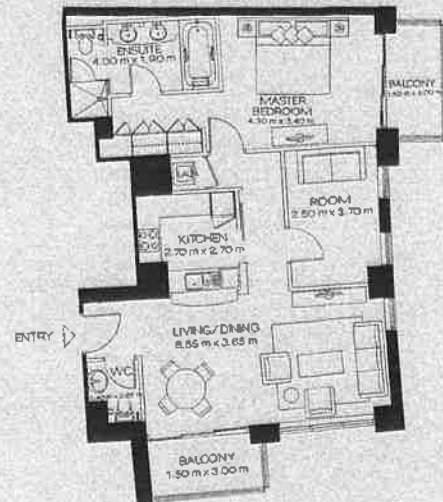
note: 1. All room dimensions are in imperial and measured to structural elements and exclude wall finishes and construction tolerances. 2. All dimensions have been provided by our consultant architects. 3. All materials, dimensions and drawings are approximate information subject to change without notice. 4. Actual suite area may vary from the stated area. Drawings not to scale. E&E. The developer reserves the right to make revisions. 5. Calculation of suite area is measured as the area bounded by the center line of demising or party walls separating one unit from another unit, the exterior walls and the exterior surface of the corridor wall enclosing and abutting the unit. 6. Calculation of balcony area is measured as the area bounded by the center lines of demising or party walls separating one unit from another unit, the outermost face of the enclosing guard and the external face of the site abutting the balcony. 7. The units are measured at level 10 in the building. Columns above this level may reduce in size, while the floors below may increase in size.

tower 01  
level 23  
suite 08

## 1 bedroom + room

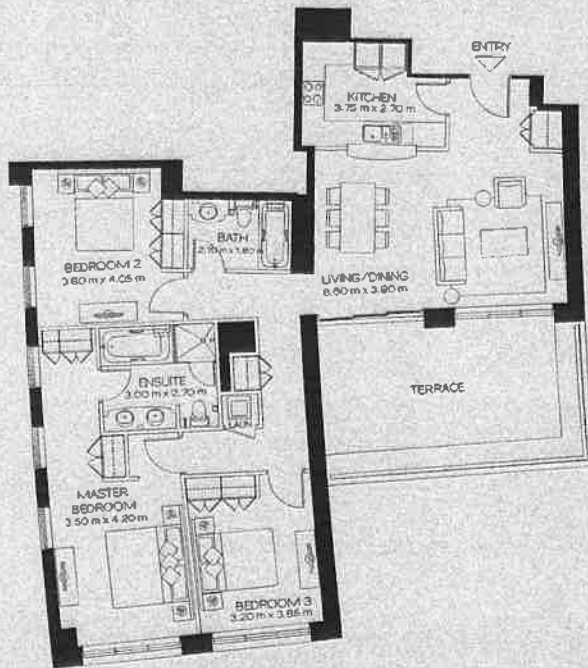
	sq m	sq ft
suite area:	91.70	987
balcony area:	10.25	110
total area:	101.95	1,097

standpoint



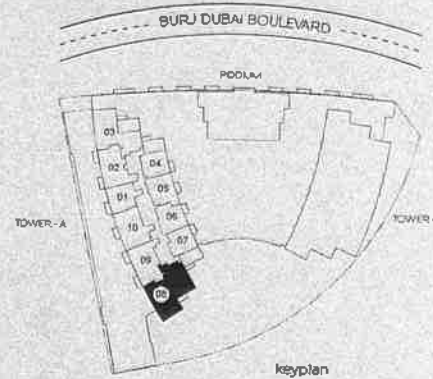
note 1. All room dimensions are in Imperial and measured to structural elements and exclude wall finishes and construction tolerances. 2. All dimensions have been provided by our consultant architects. 3. All materials, dimensions and drawings are approximate information subject to change without notice. 4. Actual suite area may vary from the stated area. Drawings not to scale E&S. The developer reserves the right to make revisions. 5. Calculation of suite area is measured as the area bounded by the center line of partitioning or party walls separating one unit from another unit, the exterior walls, and the exterior surface of the corner wall enclosing and abutting the unit. 6. Calculation of balcony area is measured as the area bounded by the center lines of partitioning or party walls separating one unit from another unit, the outermost face of the enclosing guard and the external face of the site abutting the balcony. 7. The units are measured at level 10 in the building. Columns above this level may reduce in size, while the floors below may increase in size.

tower 01  
level 24  
suite 08



### 3 bedroom

	sq m	sq ft
suite area:	139.32	1,500
terrace area:	28.53	307
total area:	167.85	1,807



note: 1. All room dimensions are in imperial and measured to structural elements and exclude wall finishes and construction tolerances. 2. All dimensions have been provided by our consultant architects. 3. All materials, dimensions and drawings are approximate information subject to change without notice. 4. Actual suite area may vary from the stated area. Drawings not to scale E&B3. The developer reserves the right to make revisions. 5. Calculation of suite area is measured as the area bounded by the centerline of demising or party walls separating one unit from another unit, the exterior walls, and the exterior surface of the corridor wall enclosing and abutting the unit. 6. Calculation of balcony area is measured as the area bounded by the center lines of demising or party walls separating one unit from another unit, the outermost face of the enclosing guard and the external face of the site abutting the balcony. 7. The units are measured at level to in the building. Columns above this level may reduce in size while the floors below may increase in size.

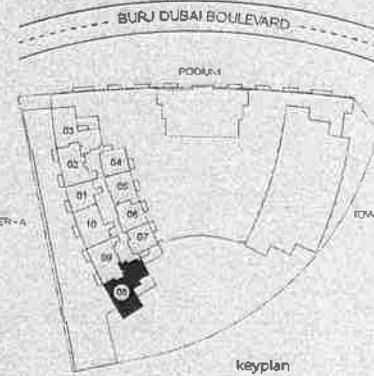
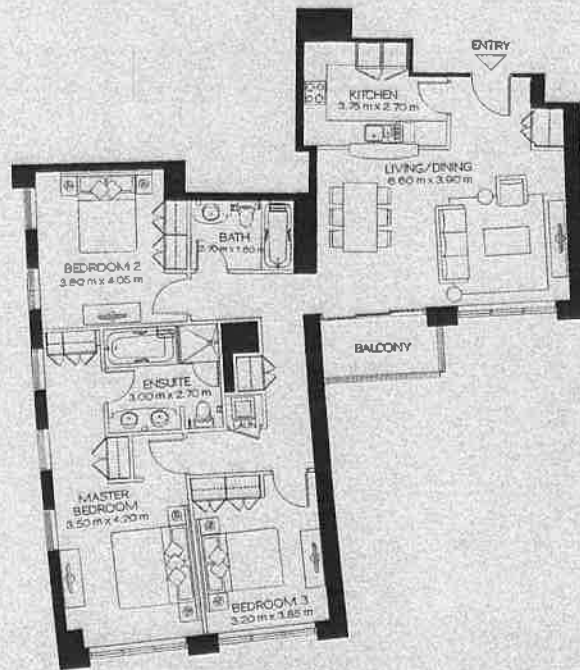
standpoint

tower 01  
level 25  
suite 08

### 3 bedroom

	sq m	sq ft
suite area:	139.32	1,500
balcony area:	6.28	68
total area:	145.60	1,567

standpoint



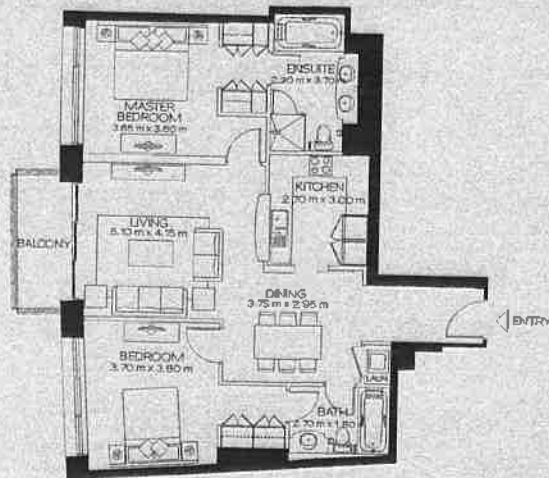
note: 1. All room dimensions are in imperial and measured to structural elements and exclude wall finishes and construction tolerances. 2. All dimensions have been provided by our consultant architects. 3. All materials, dimensions and drawings are approximate, information subject to change without notice. 4. Actual built area may vary from the stated one. Drawings not to scale. E.S.D. The developer reserves the right to make revisions. 5. Calculation of slab area is measured as the area bounded by the center line of demising or party walls separating one unit from another unit, the exterior walls, and the exterior surface of the corridor wall enclosing and abutting the unit. 6. Calculation of balcony area is measured as the area bounded by the center lines of demising or party walls separating one unit from another unit, the outermost face of the enclosing guard and the external face of the side abutting the balcony. 7. The units are measured at level 10 in the building. Columns above this level may reduce in size, while the floors below may increase in size.

tower 01  
level 26 to 27  
suite 08

## 2 bedroom

	sq m	sq ft
suite area:	106.72	1,149
balcony area:	6.28	68
total area:	113.00	1,216

standpoint



note 1. All room dimensions are in imperial and measured to structural elements and exclude wall finishes and construction tolerances. 2. All dimensions have been provided by our consultant architects. 3. All materials, dimensions and drawings are approximate information subject to change without notice. 4. Actual suite area may vary from the stated area. Drawings not to scale E&B. The developer reserves the right to make revisions. 5. Calculation of suite area is measured as the area bounded by the center line of demising or party walls separating one unit from another unit, the exterior walls and the exterior surface of the corridor wall enclosing and abutting the unit. 6. Calculation of balcony area is measured as the area bounded by the center lines of demising or party walls separating one unit from another unit, the outermost face of the enclosing guard and the external face of the site abutting the balcony. 7. The units are measured at level 10 in the building. Columns above this level may reduce in size while the floor below may increase in size.



tower 01-podium  
 level 01 to 04  
 suite 09



## studio

	Sq m	Sq ft
suite area:	39.45	425
balcony area:	3.91	42
total area:	43.36	467

standpoint



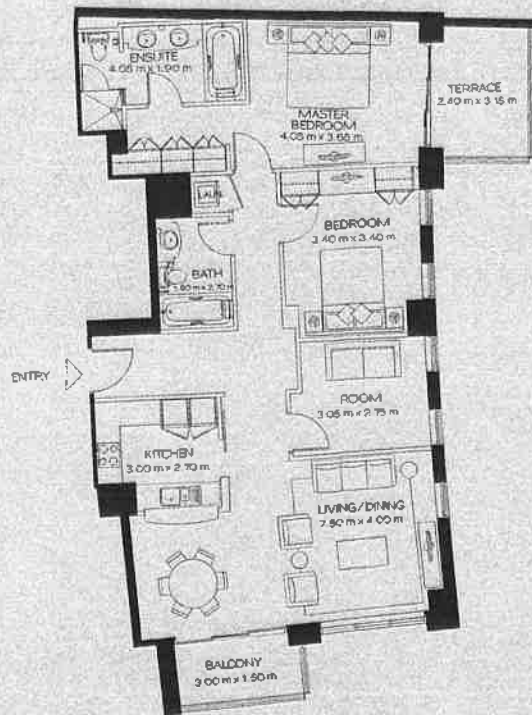
note: 1. All room dimensions are in imperial and measured to structural elements and exclude wall finishes and construction tolerances. 2. All dimensions have been provided by our consultant architects. 3. All materials, dimensions and drawings are at our own risk and information is subject to change without notice. 4. Actual suite area may vary from the stated area. Drawings not to scale. E&B. The developer reserves the right to make revisions. 5. Calculation of suite area is measured as the area bounded by the center line of demising or party walls separating one unit from another unit, the exterior walls and the exterior surface of the corridor wall enclosing and abutting the unit. 6. Calculation of balcony area is measured as the area bounded by the center lines of demising or party walls separating one unit from another unit, the outermost face of the enclosing guard and the external face of the site abutting the balcony. 7. The units are measured at level 10 in the building. Columns above this level may reduce in size, while the floors below may increase in size.

tower 01  
level 05  
suite 09

## 2 bedroom + room

	sq m	sq ft
suite area:	121.12	1,304
terrace/bal. area:	13.56	146
total area:	134.68	1,450

standpoint



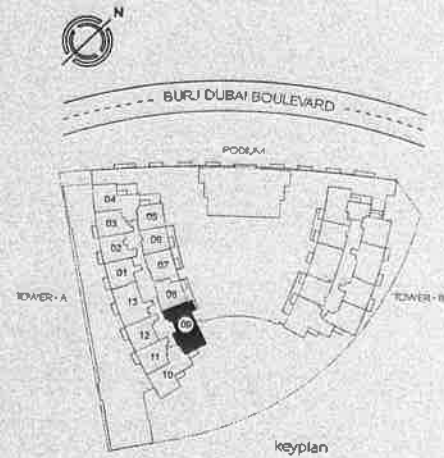
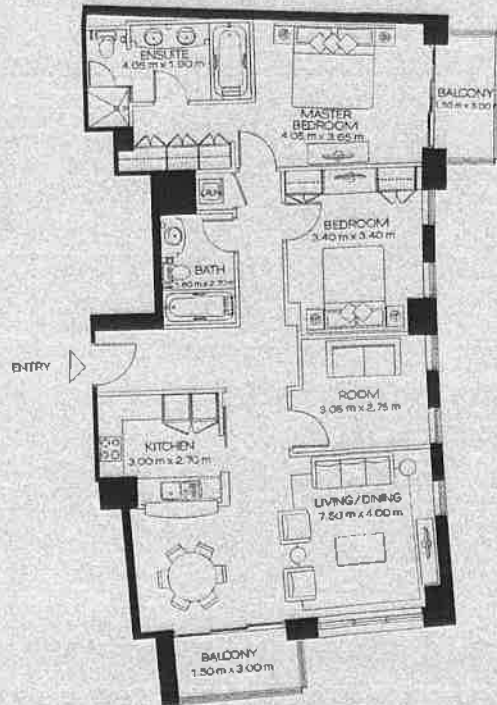
note: 1. All room dimensions are in Imperial and measured to structural elements and exclude wall finishes and construction tolerances. 2. All dimensions have been provided by our consultant architects. 3. All materials, dimensions and drawings are approximate. Information subject to change without notice. 4. Actual suite area may vary from the stated area. Drawings not to scale E&BD. The developer reserves the right to make revisions. 5. Calculation of suite area is measured as the area bounded by the center line of demising or party walls separating one unit from another unit, the exterior walls and the exterior surface of the corridor wall enclosing and abutting the unit. 6. Calculation of balcony area is measured as the area bounded by the center line of demising or party walls separating one unit from another unit, the outermost face of the enclosing guard and the external face of the side abutting the balcony. 7. The units are measured at level 10 in the building. Columns above this level may reduce in size while the floors below may increase in size.

tower 01  
level 06 to 21  
suite 09

## 2 bedroom + room

	sq m	sq ft
suite area:	121.12	1,304
balcony area:	10.25	110
total area:	131.37	1,414

standpoint



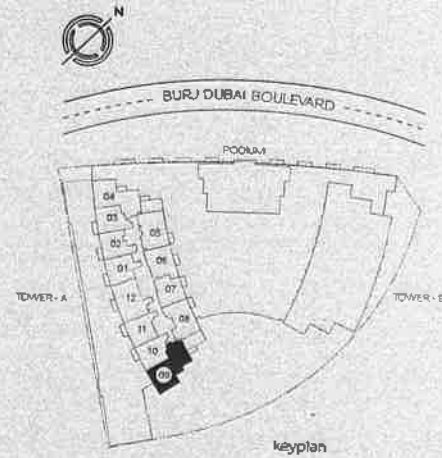
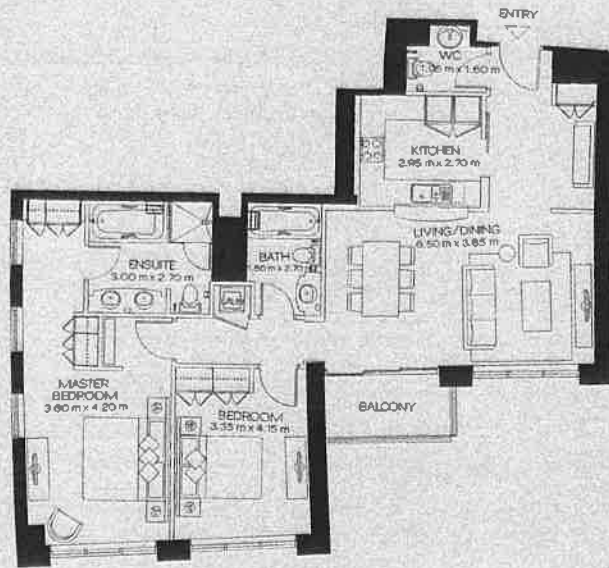
note: 1. All room dimensions are in imperial and measured to structural elements and exclude wall finishes and construction tolerances. 2. All dimensions have been provided by our consultant architects. 3. All materials, dimensions and drawings are approximate. Information subject to change without notice. 4. Actual suite area may vary from the stated area. Drawings not to scale. E&EO. The developer reserves the right to make revisions. 5. Calculation of suite area is measured as the area bounded by the center line of demising or party walls separating one unit from another unit, the exterior walls, and the exterior surface of the corridor walls enclosing and abutting the unit. 6. Calculation of balcony area is measured as the area bounded by the center lines of demising or party walls separating one unit from another unit, the outermost face of the enclosing guard and the external face of the slabs abutting the balcony. 7. The units are measured at level 10 in the building. Columns above this level may reduce in size while the floors below may increase in size.

tower 01  
 level 22 to 23  
 suite 09

## 2 bedroom

	sqm	sq ft
suite area:	118.99	1,281
balcony area:	4.87	52
total area:	123.86	1,333

standpoint



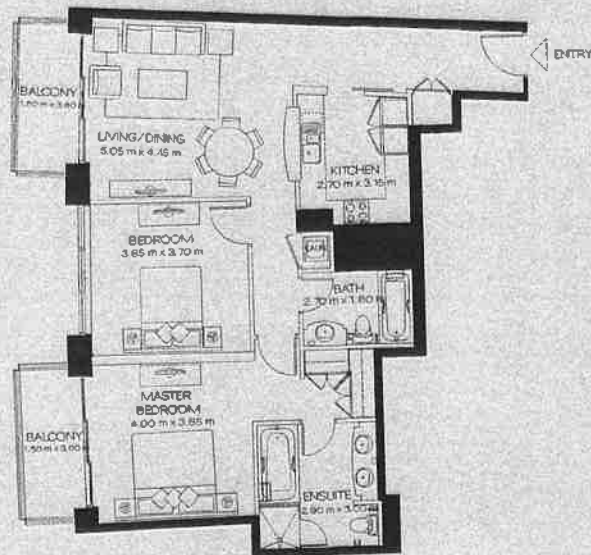
note: 1. All room dimensions are in imperial and measured to structural elements and exclude wall finishes and construction tolerances. 2. All dimensions have been provided by our consultant architects. 3. All material dimensions and drawings are approximate information subject to change without notice. 4. Actual suite area may vary from the stated area. Drawings not to scale. E&O. The developer reserves the right to make revisions. 5. Calculation of suite area is measured in the area bounded by the center line of demising or party walls separating one unit from another unit, the exterior walls, and the exterior surface of the corridor wall enclosing and abutting the unit. 6. Calculation of balcony area is measured as the area bounded and abutting the unit. 7. Calculation of balcony area is measured as the area bounded by the center lines of demising or party walls separating one unit from another unit, the outermost face of the enclosing guard and the external face of the side abutting the balcony. 8. The units are measured at level 10 in the building; columns above this level may reduce in size, while the floors below may increase in size.

tower 01  
level 24 to 25  
suite 09

## 2 bedroom

	sq m	sq ft
suite area:	106.39	1,145
balcony area:	12.56	135
total area:	118.95	1,280

standpoint



note: 1. All room dimensions are in imperial and measured to structural elements and exclude wall finishes and construction tolerances. 2. All dimensions have been provided by our consultant architects. 3. All materials, dimensions and drawings are approximate. Information subject to change without notice. 4. Actual suite area may vary from the stated area. Drawings not to scale. 5. Actual suite area may vary from the stated area. Drawings not to scale. 6. The developer reserves the right to make revisions. 7. Calculation of suite area is measured as the area bounded by the center line of ceiling or party walls separating one unit from another unit, the exterior walls, and the exterior surface of the corridor wall enclosing and abutting the unit. 8. Calculation of balcony area is measured as the area bounded by the center lines of demising or party walls separating one unit from another unit, the outermost face of the enclosing guard and the external face of the size abutting the balcony. 9. The units are measured at level 10 in the building. Columns above this level may reduce in size, while the floor below may increase in size.

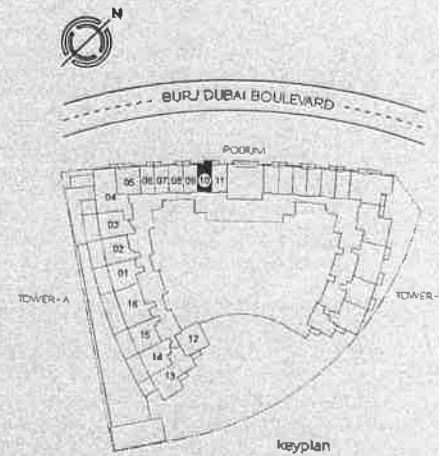


tower 01-podium  
 level 01 to 04  
 suite 10

### studio

	sq m	sq ft
suite area:	39.45	425
balcony area:	3.91	42
total area:	43.36	467

standpoint



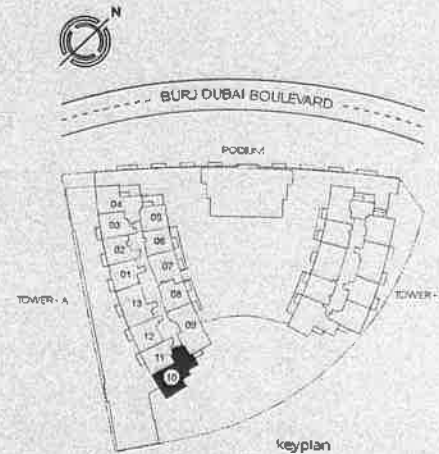
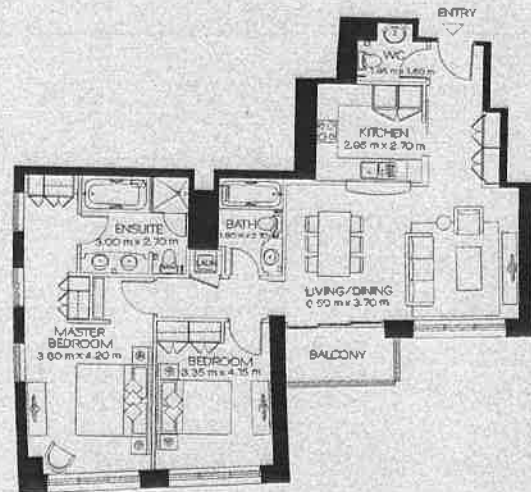
note 1. All room dimensions are in imperial and measured to structural elements and exclude wall finishes and construction tolerances. 2. All dimensions have been provided by our consultant architects. 3. All materials, dimensions and drawings are approximate. Information is subject to change without notice. 4. Actual suite area may vary from the stated area. Drawings not to scale E&B3. The developer reserves the right to make revisions. 5. Calculation of suite area is measured as the area bounded by the center line of demising or party walls separating one unit from another unit, the exterior walls, and the exterior surface of the corridor wall enclosing and abutting the unit. 6. Calculation of balcony area is measured as the area bounded by the center lines of demising or party walls separating one unit from another unit, the outermost face of the enclosing guard and the external face of the site abutting the balcony. 7. The units are measured at level 10 in the building. Columns above this level may reduce in size while the floors below may increase in size.

tower 01  
level 05 to 21  
suite 10

## 2 bedroom

	sq m	sq ft
suite area:	115.46	1,243
balcony area:	4.87	52
total area:	120.33	1,295

standpoint



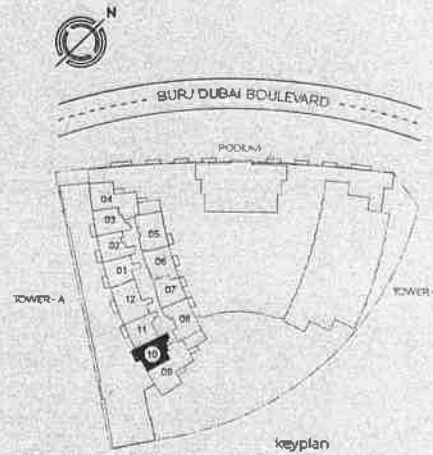
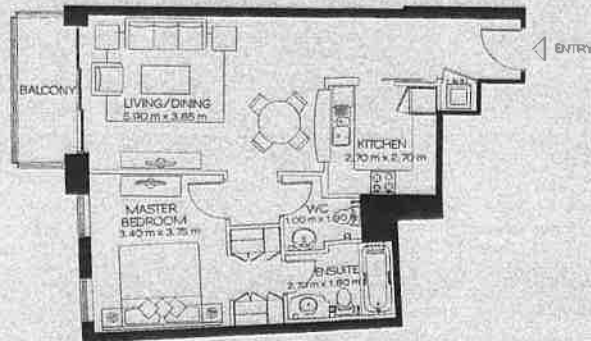
note: 1. All room dimensions are in imperial and measured to structural elements and exclude wall finishes and construction tolerances. 2. All dimensions have been provided by our consultant architects. 3. All materials, dimensions on/drawings are approximate information subject to change without notice. 4. Actual suite area may vary from the stated area. Drawings not to scale E&S. The developer reserves the right to make revisions. 5. Calculation of suite area is measured as the area bounded by the center line of demising or party walls separating one unit from another unit, the exterior walls, and the exterior surface of the corridor wall enclosing and abutting the unit. 6. Calculation of balcony area is measured as the area bounded by the center lines of demising or party walls separating one unit from another unit, the outermost face of the enclosing guard and the external face of the side abutting the balcony. 7. The trapezoids are measured at level 10 in the building. Columns above this level may reduce in size, while the floors below may increase in size.

tower 01  
 level 22 to 23  
 suite 10

### 1 bedroom

	sqm	sqft
suite area:	73.58	792
balcony area:	6.28	68
total area:	79.86	860

standpoint



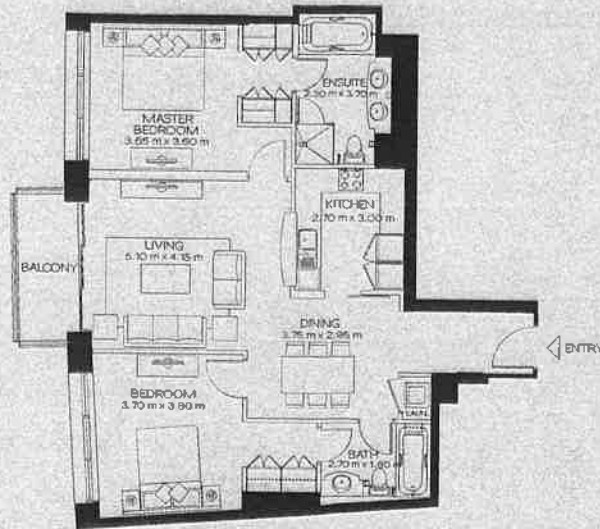
note: 1. All room dimensions are in imperial and measured to structural elements and exclude wall finishes and construction tolerances. 2. All dimensions have been provided by our consultant architects. 3. All materials, dimensions and drawings are approximate. Information subject to change without notice. 4. Actual suite area may vary from the stated area. Drawings not to scale E&B2. The developer reserves the right to make revisions. 5. Calculation of suite area is measured as the area bounded by the center line of demising or party walls separating one unit from another unit; the exterior walls and the exterior surface of the corridor wall enclosing and abutting the unit. Calculation of balcony area is measured as the area bounded by the center lines of demising or party walls separating one unit from another unit. The outermost face of the enclosing guard and the external face of the site abutting the balcony. 7. The units are measured at level 10 in the building. Columns above this level may reduce in size. The floors below may increase in size.

tower 01  
level 24 to 25  
suite 10

## 2 bedroom

	sq m	sq ft
suite area:	106.72	1,149
balcony area:	6.28	68
total area:	113.00	1,216

standpoint



notes: 1. All room dimensions are in imperial and measured to structural elements and exclude wall finishes and construction tolerances. 2. All dimensions have been provided by our consultant architects. 3. All materials, dimensions and drawings are approximate information subject to change without notice. 4. Actual suite area may vary from the stated area. Drawings not to scale E&BC. The developer reserves the right to make revisions. 5. Calculation of suite area is measured as the area bounded by the center line of corridor or party walls separating one unit from another unit, the exterior walls and the exterior face of the corridor wall enclosing and abutting the unit. 6. Calculation of balcony area is measured as the area bounded by the center lines of joining or party walls separating one unit from another unit, the outermost face of the enclosing guard and the external face of the side abutting the balcony. 7. The units are measured at level 10 in the building. Columns above this level may reduce in size while the floors below may increase in size.

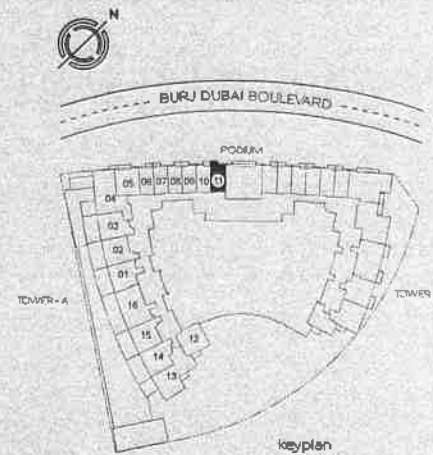
tower O1-podium  
 level O1 to O4  
 suite 11



## studio

	sq.m	sq.ft
suite area:	42.50	457
balcony area:	3.91	42
total area:	46.41	500

# standpoint



note 1. All room dimensions are in imperial and measured to structural elements and exclude wall finishes and construction tolerances. 2. All dimensions have been provided by our consultant architects. 3. All materials, dimensions and drawings are approximate information subject to change without notice. 4. Actual site area may vary from the stated area. Drawings not to scale E&E. The developer reserves the right to make revisions. 5. Calculation of suite area is measured as the area bounded by the center line of ceiling or party walls separating one unit from another unit, the exterior walls and the exterior surface of the corridor wall enclosing and abutting the unit. 6. Calculation of balcony area is measured as the area bounded by the center line of ceiling or party walls separating one unit from another unit, the outermost face of the enclosing guard and the external face of the side abutting the balcony. 7. The units are measured at level 10 in the building. Columns above this level may reduce in size while the floors below may increase in size.

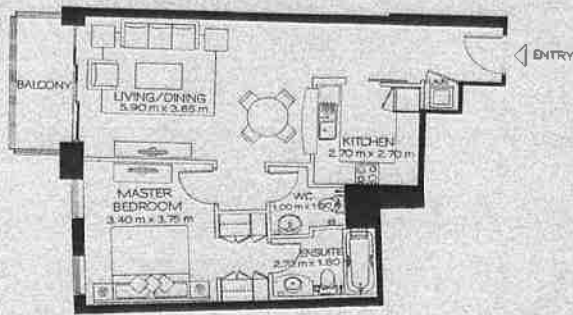


tower 01  
level 05 to 21  
suite 11

## 1 bedroom

	sqm	sq ft
suite area:	73.58	792
balcony area:	6.28	68
total area:	79.86	860

standpoint



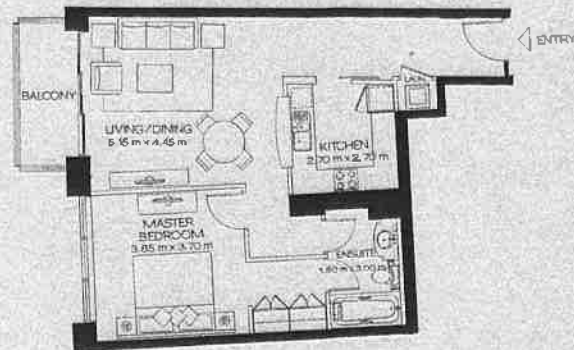
note: 1. All room dimensions are in imperial and measured to architectural elements and exclude wall finishes and construction tolerances. 2. All dimensions have been provided by our consultant architects. 3. All materials, dimensions and drawings are approximate. Information subject to change without notice. 4. Actual suite area may vary from the stated area. Drawings not to scale. E&B: The developer reserves the right to make revisions. 5. Calculation of suite area is measured as the area bounded by the center line of demising or party walls separating one unit from another unit, the exterior walls and the exterior side of the corridor wall enclosing and abutting the unit. 6. Calculation of balcony area is measured as the area bounded by the center lines of demising or party walls separating one unit from another unit, the outermost face of the enclosing guard and the external face of the side abutting the balcony. 7. The units are measured at level 10 in the building. Columns above this level may reduce in size, while the floors below may increase in size.

tower 01  
 level 22 to 23  
 suite 11

## 1 bedroom

	sq m	sq ft
suite area:	74.15	798
balcony area:	6.28	68
total area:	80.43	866

standpoint



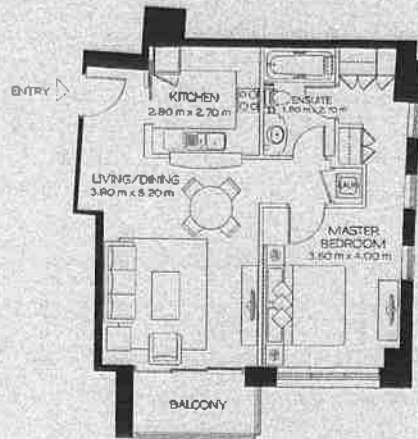
note: 1. All room dimensions are in imperial and measured to structural elements and exclude wall finishes and construction tolerances. 2. All dimensions have been provided by our consultant architects. 3. All materials, dimensions and drawings are approximate information subject to change without notice. 4. Actual suite area may vary from the stated area. Drawings not to scale (E:300). The developer reserves the right to make revisions. 5. Calculation of suite area is measured as the area bounded by the center line of center of party walls separating one unit from another unit. The exterior walls and the exterior surface of the corridor wall enclosing and abutting the unit. 6. Calculation of balcony area is measured as the area bounded by the center lines of center of party walls separating one unit from another unit, the exterior wall of the enclosing guard and the external face of the site abutting the balcony. 7. The units are measured at level 10 in the building. Columns above this level may reduce in size while the floors below may increase in size.

tower O1-podium  
 level O1 to O4  
 suite 12

### 1 bedroom

	sq m	sq ft
suite area:	69.65	750
balcony area:	4.87	52
total area:	74.52	802

standpoint



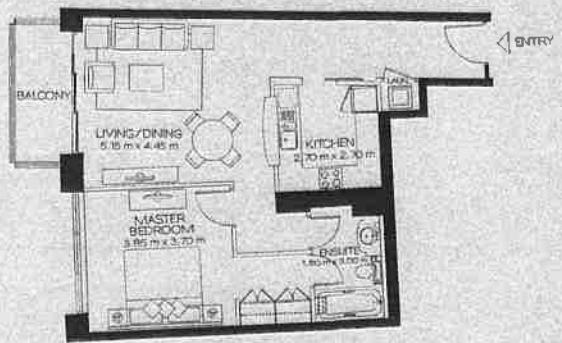
note: 1. All room dimensions are in imperial and measured to structural elements and exclude wall finishes and construction tolerances. 2. All dimensions have been provided by our consultant architects. 3. All materials, dimensions and drawings are approximate. Information subject to change without notice. 4. Actual site area may vary from the stated area. Drawings not to scale E&B. The developer reserves the right to make revisions. 5. Calculation of suite area is measured as the area bounded by the center line of corridor or party walls separating one unit from another unit, the exterior walls, and the exterior surface of the corridor wall enclosing and abutting the unit. 6. Calculation of balcony area is measured as the area bounded by the center lines of demising or party walls separating one unit from another unit, the outermost face of the enclosing guard and the external face of the side abutting the balcony. 7. The units are measured at level 10 in the balcony. Columns above the level may reduce in size while the floor below may increase in size.

tower 01  
 level 05 to 21  
 suite 12

### 1 bedroom

	sqm	sq ft
suite area:	74.15	798
balcony area:	6.28	68
total area:	80.43	866

standpoint



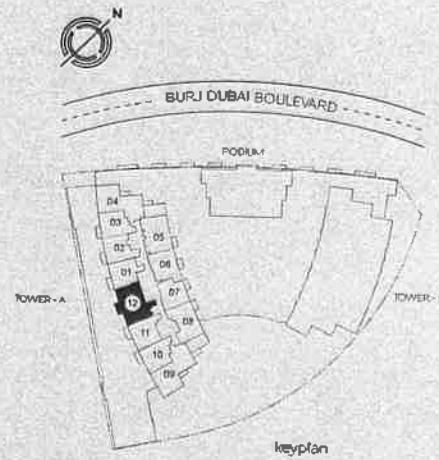
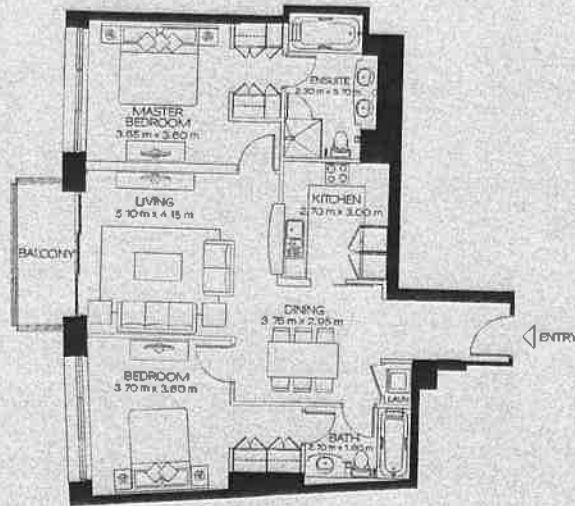
note: 1. All room dimensions are in imperial and measured to structural elements and exclude wall finishes and construction tolerances. 2. All dimensions have been provided by our consultant architects. 3. All materials, dimensions and drawings are approximate, information subject to change without notice. 4. Actual suite area may vary from the stated area. Drawings not to scale E&B. The developer reserves the right to make revisions. 5. Calculation of suite area is measured as the area bounded by the center line of demising or party walls separating one unit from another unit, the exterior walls, and the exterior surface of the corridor wall enclosing and abutting the unit. 6. Calculation of balcony area is measured as the area bounded by the center line of demising or party walls separating one unit from another unit, the outermost face of the enclosing guard and the external face of the side abutting the balcony. 7. The units are measured at level 10 in the building. Columns above this level may reduce in size, while the floors below may increase in size.

tower 01  
level 22 to 23  
suite 12

## 2 bedroom

	sq.m	sq.ft
suite area:	106.72	1,149
balcony area:	6.28	68
total area:	113.00	1,216

standpoint



note: 1. All room dimensions are in imperial and measured to structural elements and exclude wall finishes and construction tolerances. 2. All dimensions have been provided by our consultant architects. 3. All materials, dimensions and drawings are approximate information subject to change without notice. 4. Actual suite area may vary from the stated area. Drawings not to scale. E&BQ. The developer reserves the right to make revisions. 5. Calculation of suite area is measured as the area bounded by the centre line of demising or party walls separating one unit from another unit, the exterior walls, and the exterior surface of the corridor wall enclosing and abutting the unit. 6. Calculation of balcony area is measured as the area bounded by the centre lines of demising or party walls separating one unit from another unit, the outermost face of the enclosing guard and the external face of the site abutting the balcony. 7. Columns may vary in size depending on the floor level.

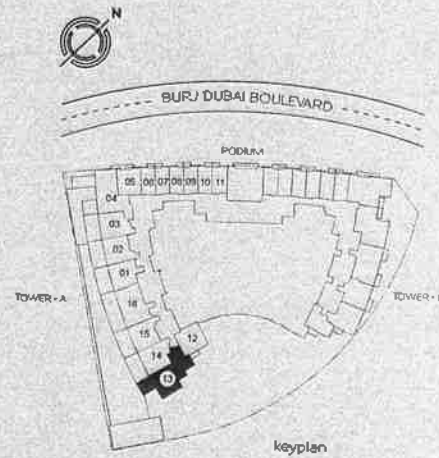
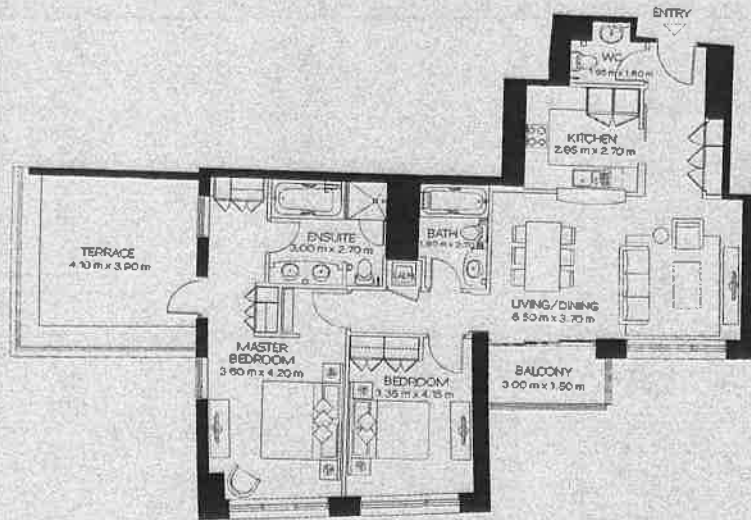


tower 01-podium  
 level 01  
 suite 13

## 2 bedroom

	sq.m	sq.ft
suite area:	115.46	1,243
terrace / bal. area:	26.55	286
total area:	142.01	1,529

standpoint



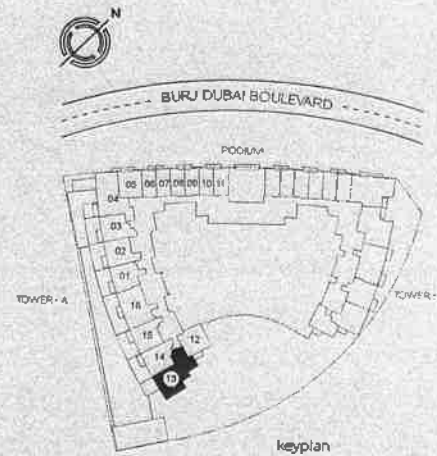
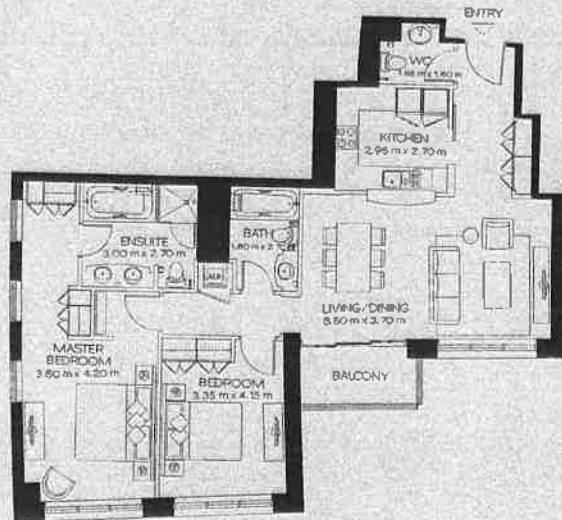
note 1. All room dimensions are in imperial and measured to structural elements and exclude wall finishes and construction tolerances. 2. All dimensions have been provided by our consultant architects. 3. All materials, dimensions and drawings are approximate. Information subject to change without notice. 4. Actual suite area may vary from the stated area. Drawings not to scale E&B. The developer reserves the right to make revisions. 5. Calculation of suite area is measured as the area bounded by the center line of demising or party walls separating one unit from another unit, the exterior walls and the exterior surface of the corridor wall enclosing and abutting the unit. 6. Calculation of balcony area is measured as the area bounded by the center line of demising or party walls separating one unit from another unit, the outermost face of the enclosing guard and the external face of the area abutting the balcony. 7. The units are measured at level 10 in the building. Columns above this level may reduce in size, while the floors below may increase in size.

tower 01-podium  
level 02 to 04  
suite 13

## 2 bedroom

	sq m	sq ft
suite area:	115.46	1,243
balcony area:	4.87	52
total area:	120.33	1,295

standpoint



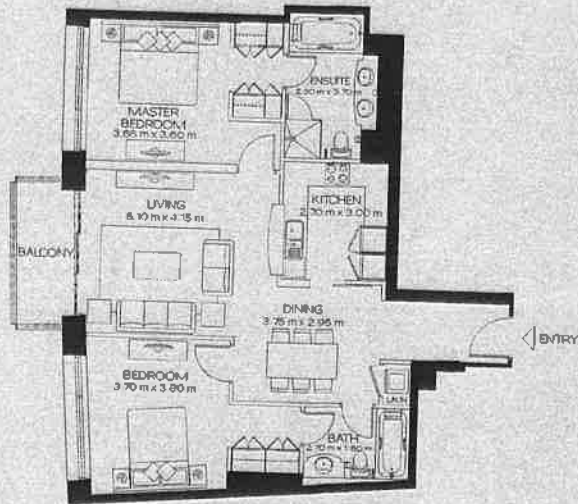
note 1. All room dimensions are in imperial and measured to structural elements and exclude wall finishes and construction tolerances. 2. All dimensions have been provided by our consultant architects. 3. All structural dimensions and drawings are approximate. Information subject to change without notice. 4. Actual suite area may vary from the stated area. Drawings not to scale. 5. The developer reserves the right to make revisions. 6. Calculation of suite area is measured as the area bounded by the center line of demising or party walls separating one unit from another unit, the exterior walls, and the exterior surface of the corridor wall enclosing and abutting the unit. 7. Calculation of balcony area is measured as the area bounded by the center lines of demising or party walls separating one unit from another unit, the outermost face of the enclosing guard and the external face of the site abutting the balcony. 8. The units are measured at level 10. 9. The building columns above this level may reduce in size, while the floors below may increase in size.

tower 01  
level 05 to 21  
suite 13

## 2 bedroom

	sq m	sq ft
suite area:	106.72	1,149
balcony area:	6.28	68
total area:	113.00	1,218

standpoint



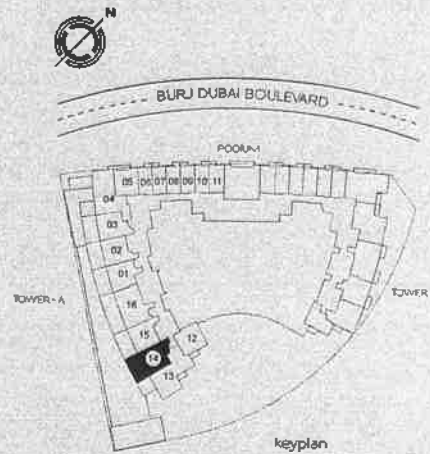
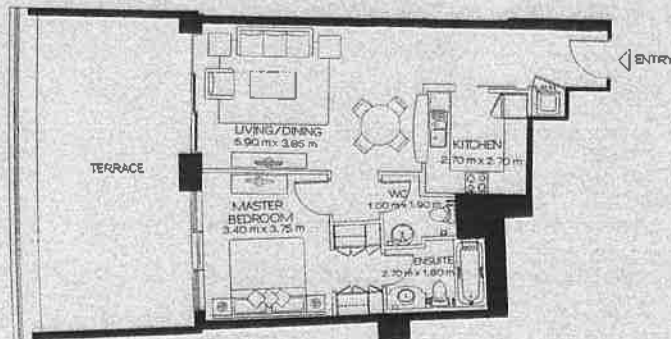
note 1. All room dimensions are in imperial and measured to structural elements and exclude wall finishes and construction tolerances. 2. All dimensions have been provided by our consultant architect. 3. All room (RAB) dimensions and drawings are approximate information subject to change without notice. 4. Actual suite area may vary from the stated area. Drawings are to scale E&D. The developer reserves the right to make revisions. 5. Calculation of suite area is measured as the area bounded by the center line of demising or party walls separating one unit from another unit. The exterior walls and the exterior surface of the corridor wall enclosing and abutting the unit. 6. Calculation of balcony area is measured as the area bounded by the center lines of demising or party walls separating one unit from another unit, the outermost face of the enclosing guard and the external face of the side abutting the balcony. 7. The units are measured at least 10 m in the building columns above this level may reduce in size while the floors below may increase in size.

tower O1-podium  
 level O1  
 suite 14

## 1 bedroom

	sq m	sq ft
suite area:	73.58	792
terrace area:	40.08	431
total area:	113.66	1,223

standpoint



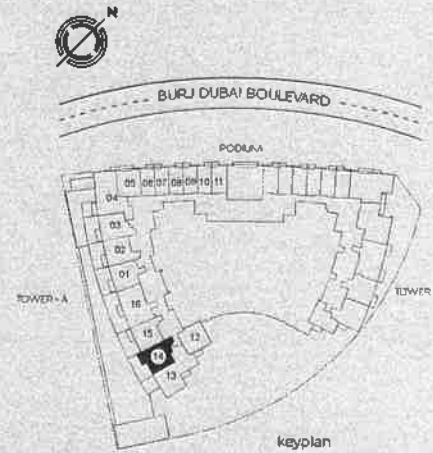
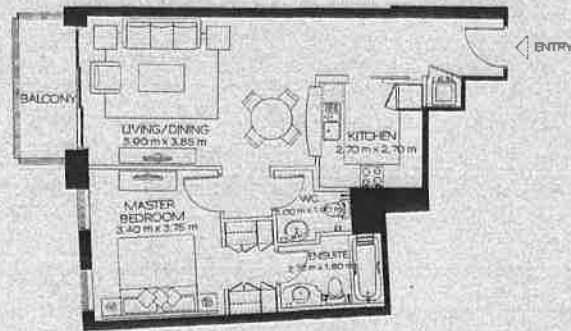
note: 1. All room dimensions are in imperial and measured to structural elements and exclude wall finishes and construction tolerances. 2. All dimensions have been provided by our consultant architects. 3. All imperial dimensions and drawings are approximate. Information subject to change without notice. 4. Actual suite area may vary from the stated area. Drawings not to scale E&SO. The developer reserves the right to make revisions. 5. Calculation of suite area is measured as the area bounded by the center line of opening or party wall separating one unit from another unit, the exterior walls and the exterior surface of the exterior wall enclosing and abutting the unit. 6. Calculation of balcony area is measured as the area bounded by the center lines of opening or party walls separating one unit from another unit, the outermost face of the enclosing guard and the external face of the side abutting the balcony. 7. The units are measured at level 01 in the building. Columns above this level may reduce in size while the floors below may increase in size.

tower O1-podium  
 level O2 to O4  
 suite 14

## 1 bedroom

	sq m	sq ft
suite area:	73.58	792
balcony area:	6.28	68
total area:	79.86	860

Standpoint



note: 1. All room dimensions are in meter(s) and measure(d) to structural elements and exclude wall finishes and construction tolerances. 2. All dimensions have been provided by our consultant architects. 3. All materials, dimensions and drawings are approximate information subject to change without notice. 4. Actual site area may vary from the stated area. Drawings not to scale E6:20. The developer reserves the right to make revisions. 5. Calculation of suite area is measured as the area bounded by the center line of partition or party walls separating one unit from another unit, the exterior walls, and the exterior surface of the corridor wall enclosing and abutting the unit. 6. Calculation of balcony area is measured as the area bounded by the center lines of partition or party walls separating one unit from another unit, the outermost side of the enclosing guard and the external face of the site abutting the balcony. 7. The units are measured at level 10 in the building. Columns above this level may reduce in size, while the floors below may increase in size.

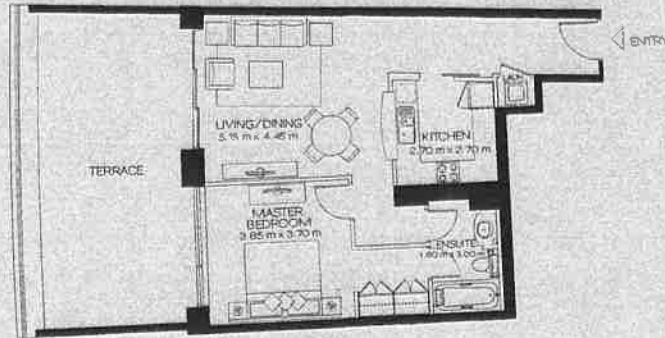


tower O1-podium  
 level O1  
 suite 15

### 1 bedroom

	sq m	sq ft
suite area:	74.15	798
terrace area:	40.08	431
total area:	114.23	1,230

standpoint



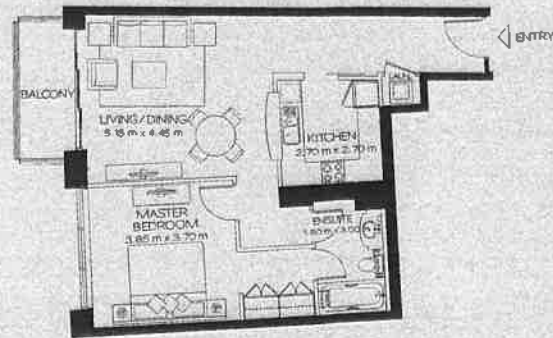
Notes: 1. All room dimensions are in Imperial and measured to structural elements and exclude wall finishes and construction tolerances. 2. All dimensions have been provided by our consultant architects. 3. All materials, dimensions and drawings are approximate information subject to change without notice. 4. Actual suite area may vary from the stated area. Drawings not to scale E&SD. The Developer reserves the right to make revisions. 5. Calculation of suite area is measured as the area bounded by the center line of demising or party walls separating one unit from another unit, the exterior walls and the exterior surface of the corridor wall enclosing and abutting the unit. 6. Calculation of balcony area is measured as the area bounded by the center lines of demising or party walls separating one unit from another unit, the outermost face of the enclosing guard and the external face of the side abutting the balcony. 7. The units are measured at Level 10 in the building. Columns above this level may reduce in size while the floors below may increase in size.

tower O1-podium  
 level O2 to O4  
 suite 15

## 1 bedroom

	sq m	sq ft
suite area:	74.15	798
balcony area:	6.28	68
total area:	80.43	866

standpoint



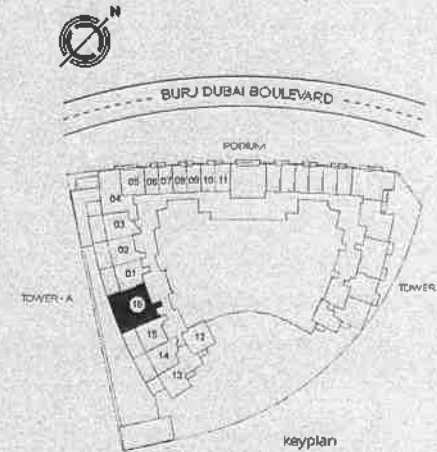
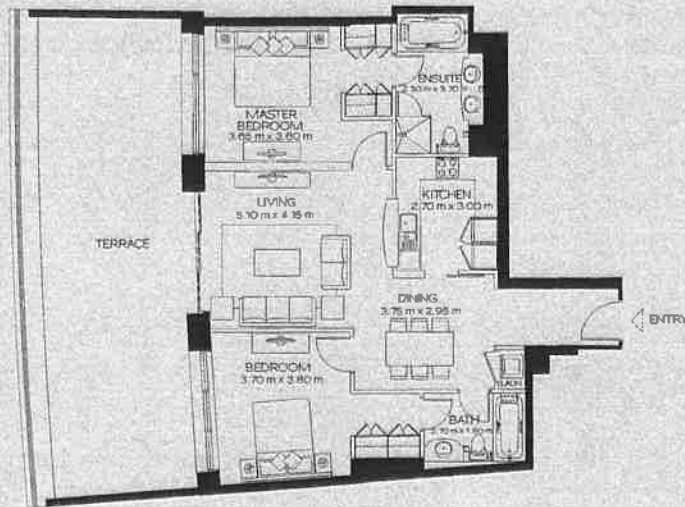
note 1. All room dimensions are in imperial and measured to structural elements and exclude wall finishes and construction tolerances. 2. All dimensions have been provided by our consultant architects. 3. All materials, dimensions and drawings are approximate. Information subject to change without notice. 4. Actual suite area may vary from the stated area. Drawings not to scale. E&SO. The developer reserves the right to make revisions. 5. Calculation of suite area is measured as the area bounded by the center line of demising or party walls separating one unit from another unit, the exterior walls, and the exterior surface of the corridor wall enclosing and abutting the unit. 6. Calculation of balcony area is measured as the area bounded by the center lines of demising or party walls separating one unit from another unit, the outermost face of the enclosing guard and the external face of the side abutting the balcony. 7. The units are measured at level 10 in the building. Columns above this level may reduce in size, while the floor below may increase in size.

tower O1-podium  
 level O1  
 suite 16

## 2 bedroom

	sq m	sq ft
suite area:	106.72	1,149
terrace area:	60.40	650
total area:	167.12	1,799

standpoint



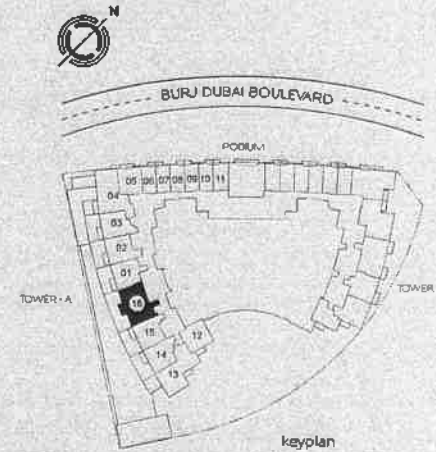
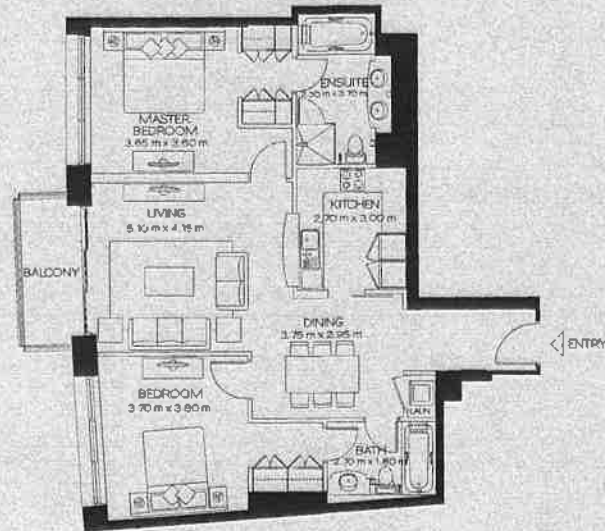
note: 1. All room dimensions are in imperial and measured to structural elements and exclude wall finishes and construction tolerances. 2. All dimensions have been provided by our consultant architects. 3. All materials, dimensions and drawings are approximate information subject to change without notice. 4. Actual suite area may vary from the stated area. Drawings not to scale. E&B. The developer reserves the right to make revisions. 5. Calculation of suite area is measured as the area bounded by the center line of ceiling or party walls separating one unit from another unit, the exterior walls and the exterior surface of the corridor wall enclosing and abutting the unit. 6. Calculation of balcony area is measured as the area bounded by the center lines of ceiling or party walls separating one unit from another unit, the outermost face of the exterior guard and the external face of the site abutting the balcony. 7. The units are measured at level 10 in the building. Columns above this level may reduce in size, while the floors below may increase in size.

tower 01-podium  
level 02 to 04  
suite 16

## 2 bedroom

	sq m	sq ft
suite area:	106.72	1,149
balcony area:	6.28	68
total area:	113.00	1,216

standpoint



note 1. All room dimensions are in imperial and measured to structural elements and exclude wall finishes and construction tolerances. 2. All elevations have been provided by our consultant architect. 3. All materials, dimensions and drawings are approximate, information subject to change without notice. 4. Actual suite area may vary from the stated area. Drawings not to scale. E&B. The developer reserves the right to make revisions. 5. Calculation of suite area is measured as the area bounded by the center line of demising or party walls separating one unit from another unit, the exterior walls, and the exterior surface of the corridor wall enclosing and abutting the unit. 6. Calculation of balcony area is measured as the area bounded by the center lines of demising or party walls separating one unit from another unit, the outermost face of the enclosing guard and the external face of the site abutting the balcony. 7. The units are measured at level 10 in the building. Columns above this level may reduce in size, while the floors below may increase in size.