

# DOWNTOWN VIEWS II



TRADITIONAL  
TRANQUILITY



MAKE THE  
EXTRAORDINARY  
YOUR HOME.



A REFINED  
LIFESTYLE BEYOND  
COMPARE











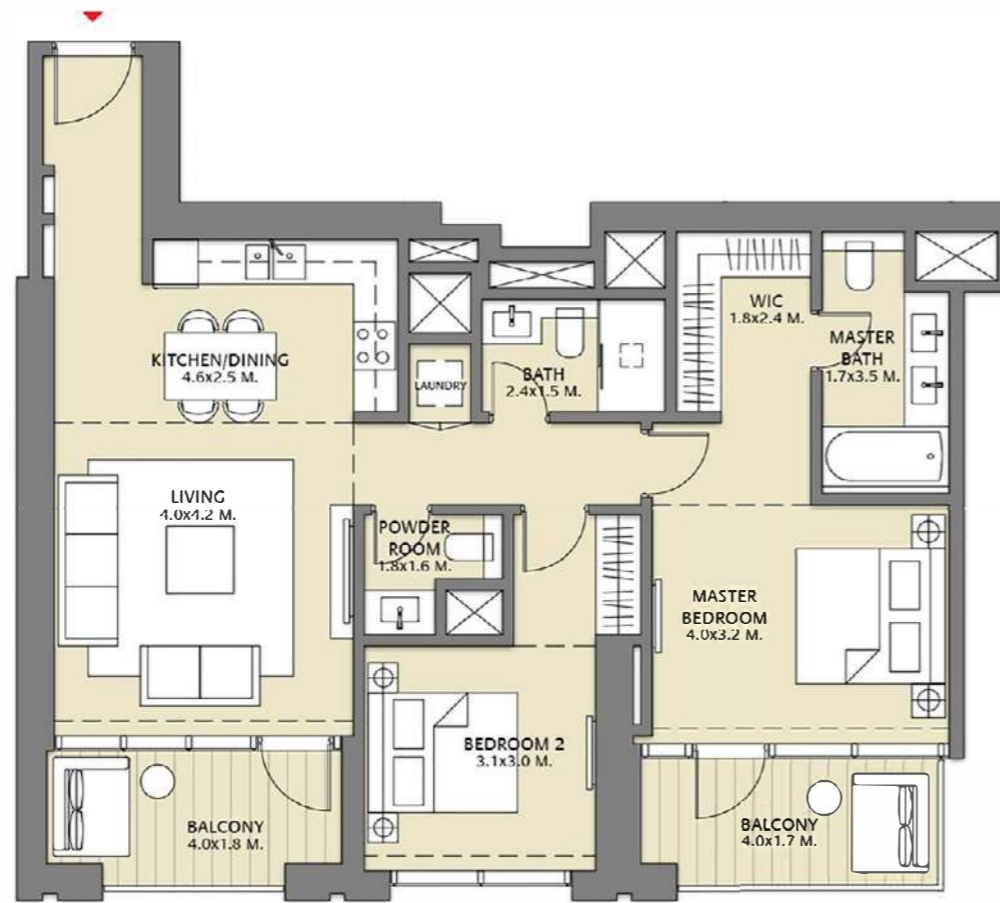




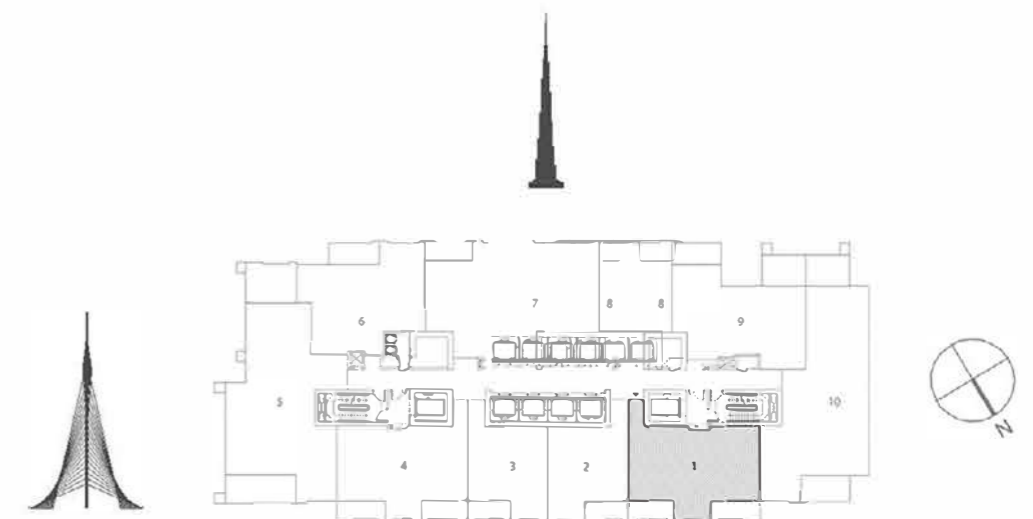
# FLOOR PLANS



TOWER 1  
2 BEDROOM W/BALCONY  
UNIT 01/ LEVELS 2-15, 17-35



Suite Area	997.38 Sq.ft. / 92.66 Sq.m.
Balcony Area	164.58 Sq.ft. / 15.29 Sq.m.
Total Area	1161.96 Sq.ft. / 107.95 Sq.m.

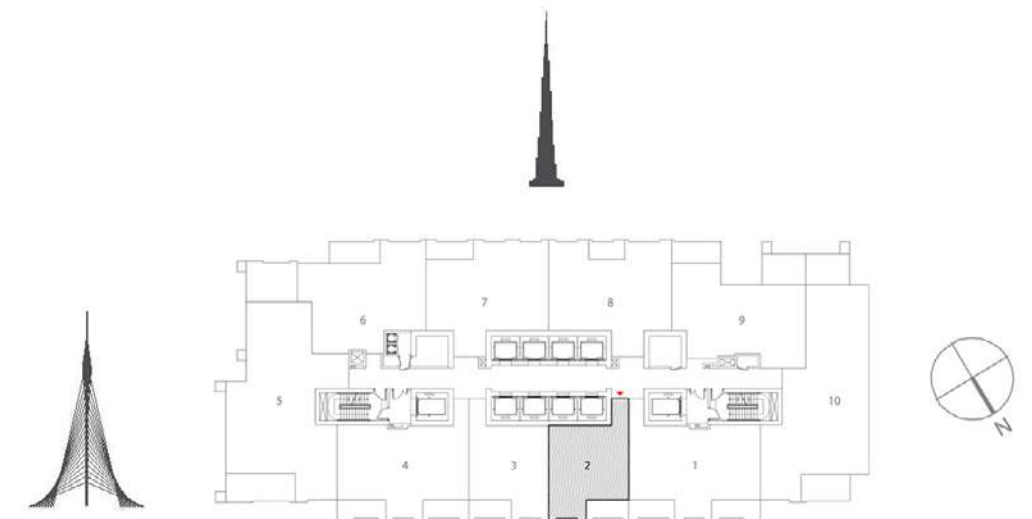


1. All dimensions are in imperial and metric, and measured to structural elements and exclude wall finishes and construction tolerances. 2. All materials, dimensions, and drawings are approximate only. 3. Information is subject to change without notice, at developer's absolute discretion. 4. Actual area may vary from the stated area. 5. Drawings not to scale. 6. All images used are for illustrative purposes only and do not represent the actual size, features, specifications, fittings, and furnishings. 7. The developer reserves the right to make revisions/alterations, at its absolute discretion, without any liability whatsoever.

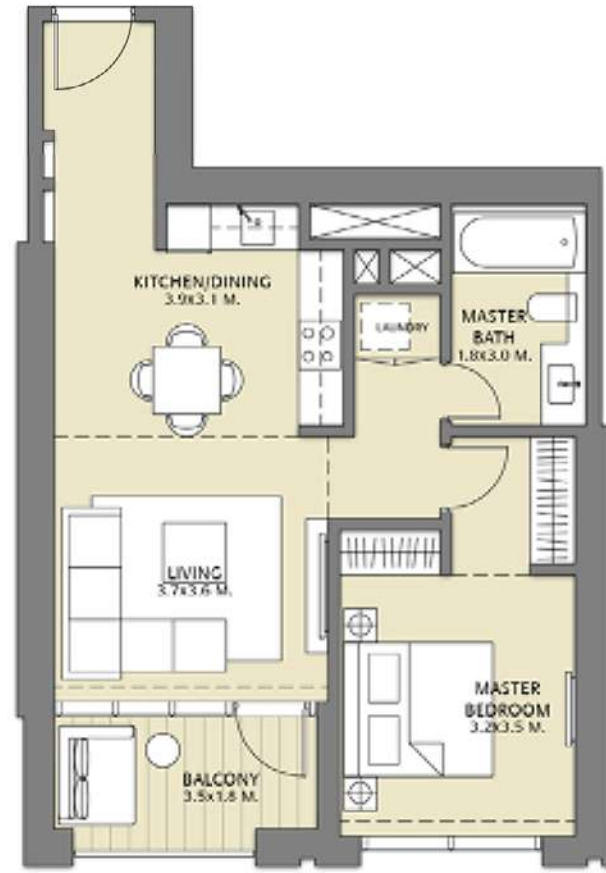
TOWER 1  
1 BEDROOM W/BALCONY  
UNIT 02/ LEVELS 2-15, 17-35



Suite Area	658.75 Sq.ft. / 61.20 Sq.m.
Balcony Area	76.42 Sq.ft. / 7.10 Sq.m.
Total Area	735.18 Sq.ft. / 68.30 Sq.m.

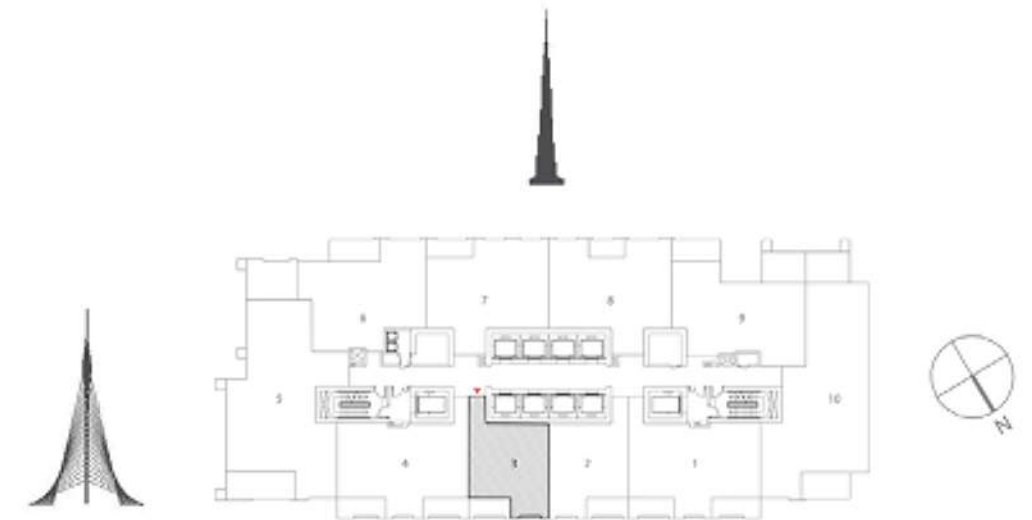


1. All dimensions are in imperial and metric, and measured to structural elements and exclude wall finishes and construction tolerances. 2. All materials, dimensions, and drawings are approximate only. 3. Information is subject to change without notice, at developer's absolute discretion. 4. Actual area may vary from the stated area. 5. Drawings not to scale. 6. All images used are for illustrative purposes only and do not represent the actual size, features, specifications, fittings, and furnishings. 7. The developer reserves the right to make revisions/alterations, at its absolute discretion, without any liability whatsoever.



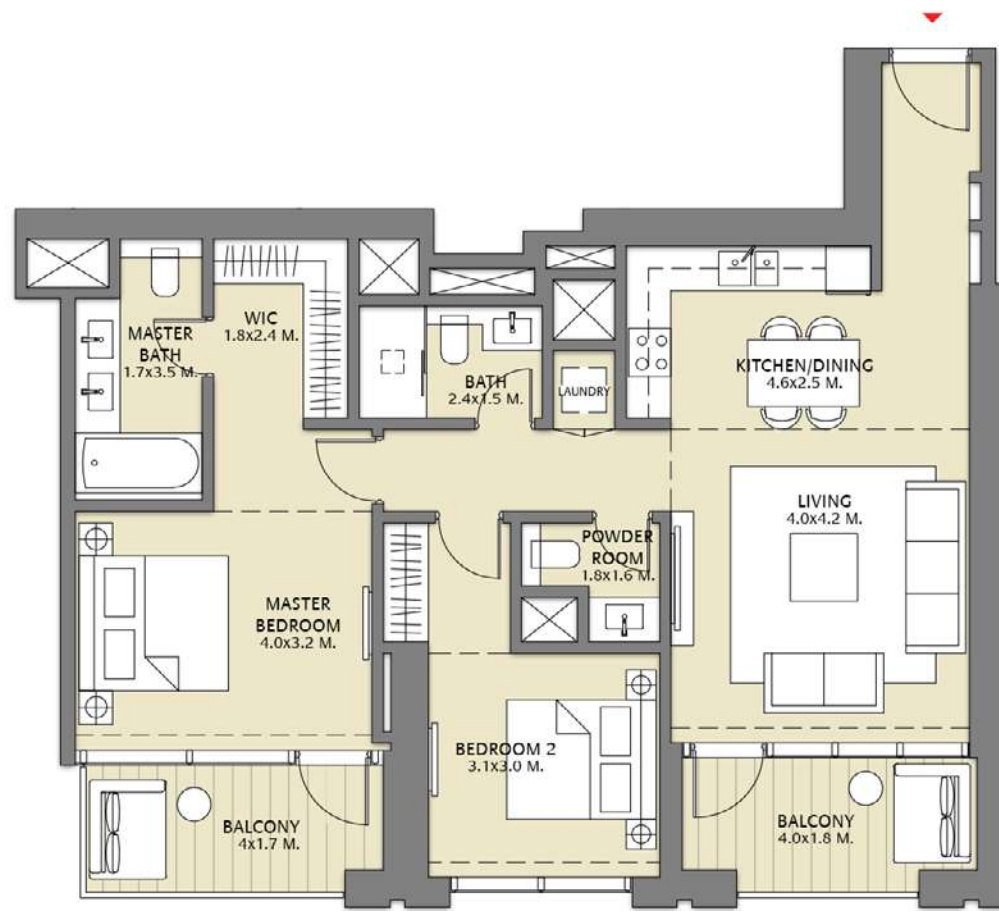
TOWER 1  
1 BEDROOM W/BALCONY  
UNIT 03/ LEVELS 2-15, 17-35

Suite Area	658.75 Sq.ft. / 61.20 Sq.m.
Balcony Area	76.42 Sq.ft. / 7.10 Sq.m.
Total Area	735.18 Sq.ft. / 68.30 Sq.m.

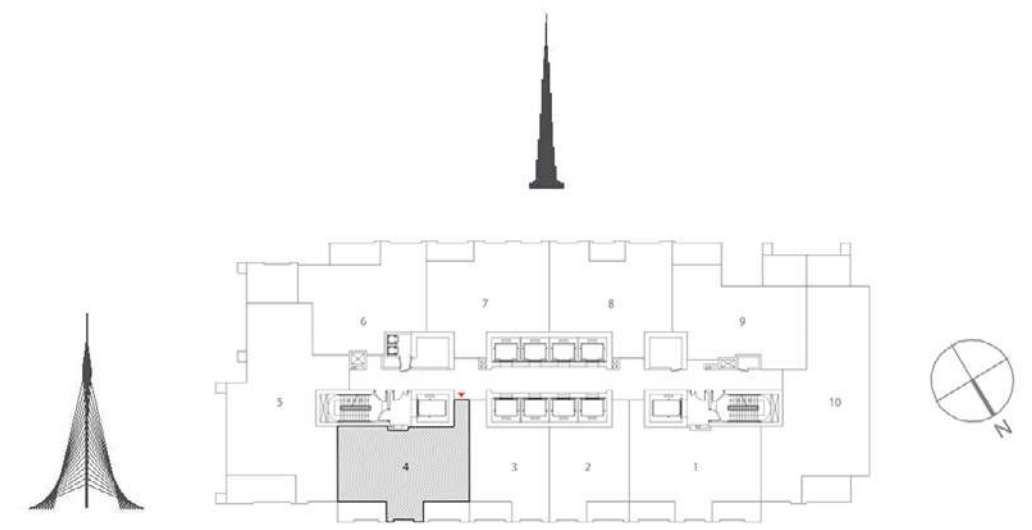


1. All dimensions are in imperial and metric, and measured to structural elements and exclude wall finishes and construction tolerances. 2. All materials, dimensions, and drawings are approximate only. 3. Information is subject to change without notice, at developer's absolute discretion. 4. Actual area may vary from the stated area. 5. Drawings not to scale. 6. All images used are for illustrative purposes only and do not represent the actual size, features, specifications, fittings, and furnishings. 7. The developer reserves the right to make revisions/alterations, at its absolute discretion, without any liability whatsoever.

TOWER 1  
2 BEDROOM W/BALCONY  
UNIT 04/ LEVELS 2-15, 17-35

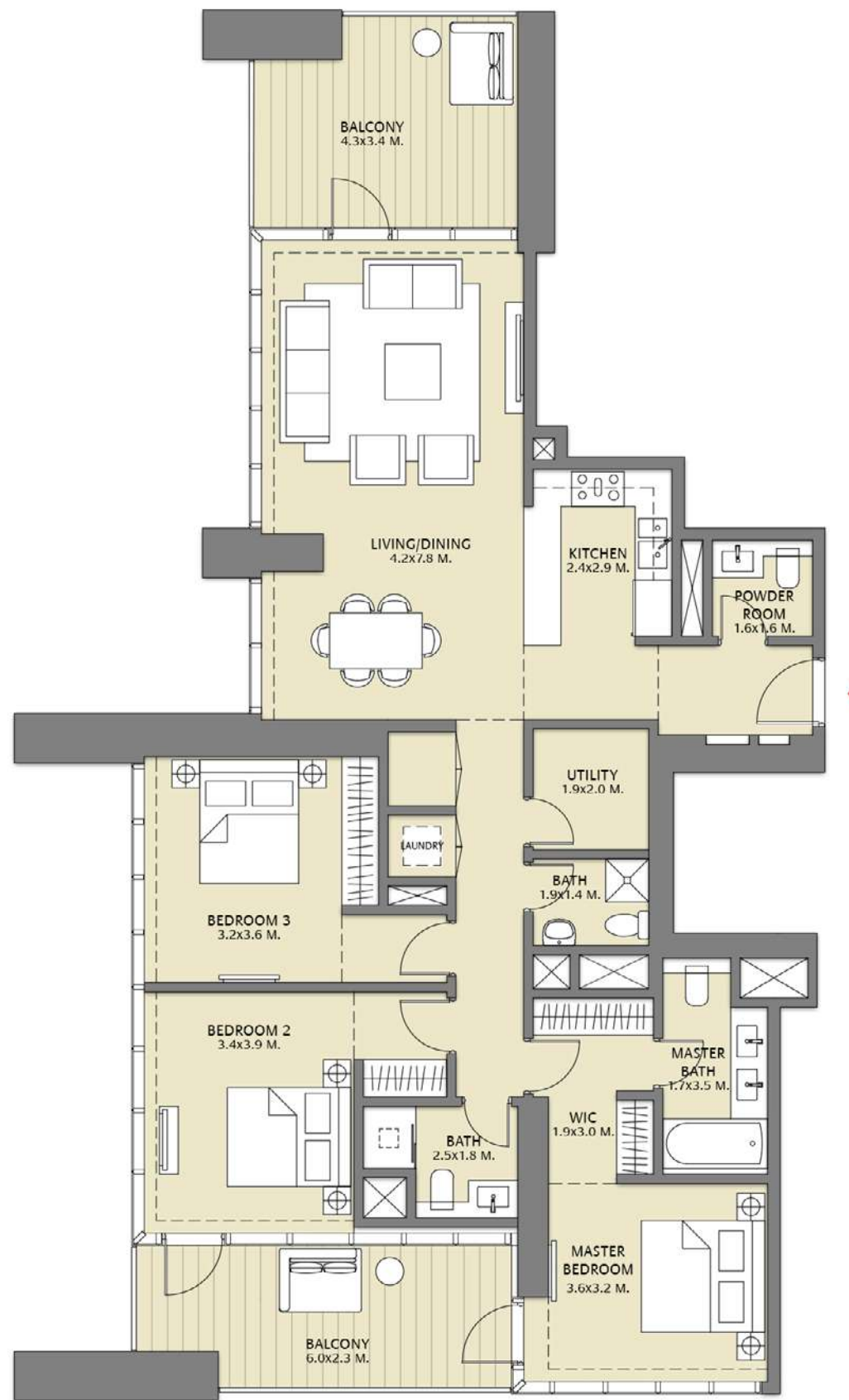


Suite Area	997.38 Sq.ft. / 92.66 Sq.m.
Balcony Area	164.58 Sq.ft. / 15.29 Sq.m.
Total Area	1161.96 Sq.ft. / 107.95 Sq.m.

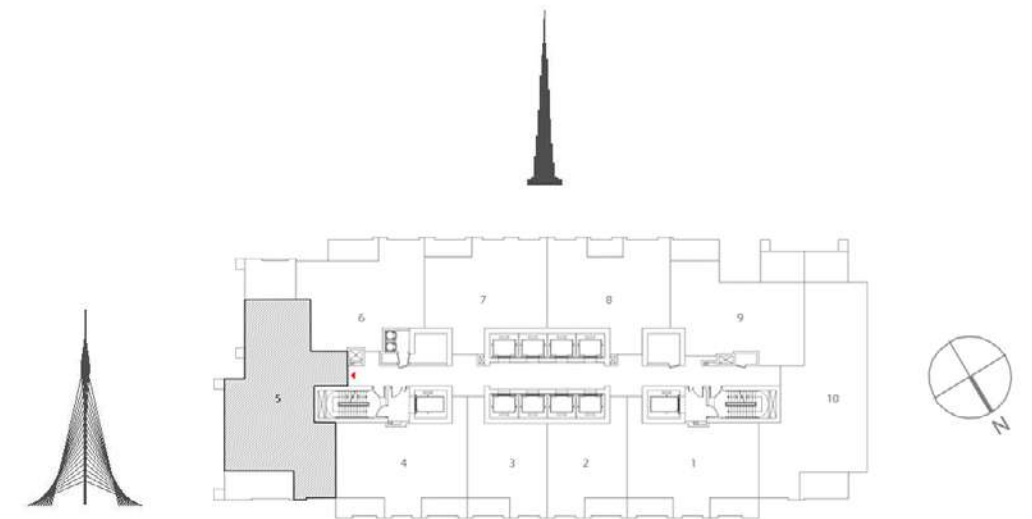


1. All dimensions are in imperial and metric, and measured to structural elements and exclude wall finishes and construction tolerances. 2. All materials, dimensions, and drawings are approximate only. 3. Information is subject to change without notice, at developer's absolute discretion. 4. Actual area may vary from the stated area. 5. Drawings not to scale. 6. All images used are for illustrative purposes only and do not represent the actual size, features, specifications, fittings, and furnishings. 7. The developer reserves the right to make revisions/alterations, at its absolute discretion, without any liability whatsoever.

TOWER 1  
3 BEDROOM W/BALCONY  
UNIT 05/ LEVELS 2-15, 17-35



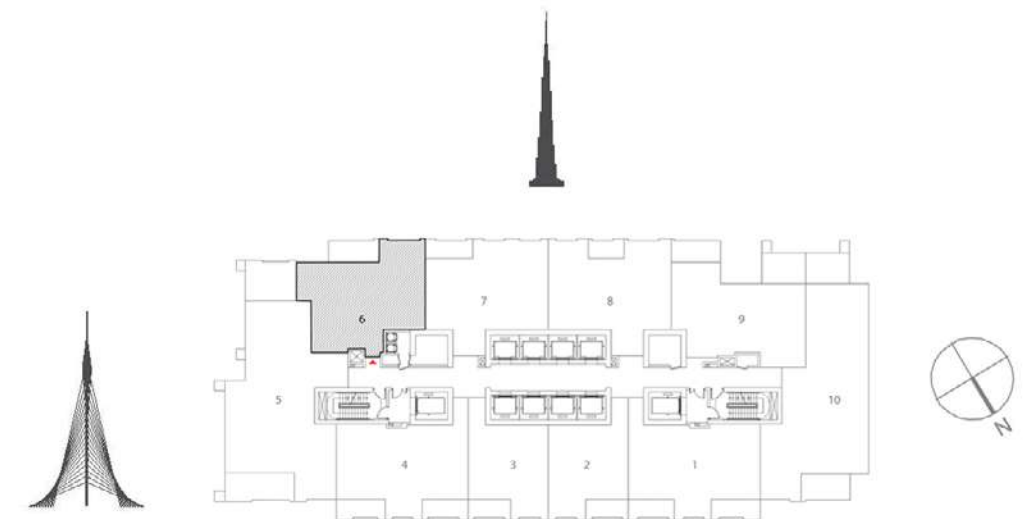
Suite Area	1522.56 Sq.ft. / 141.45 Sq.m.
Balcony Area	329.38 Sq.ft. / 30.60 Sq.m.
Total Area	1851.93 Sq.ft. / 172.05 Sq.m.



TOWER 1  
2 BEDROOM W/BALCONY  
UNIT 06/ LEVELS 2-15, 17-35



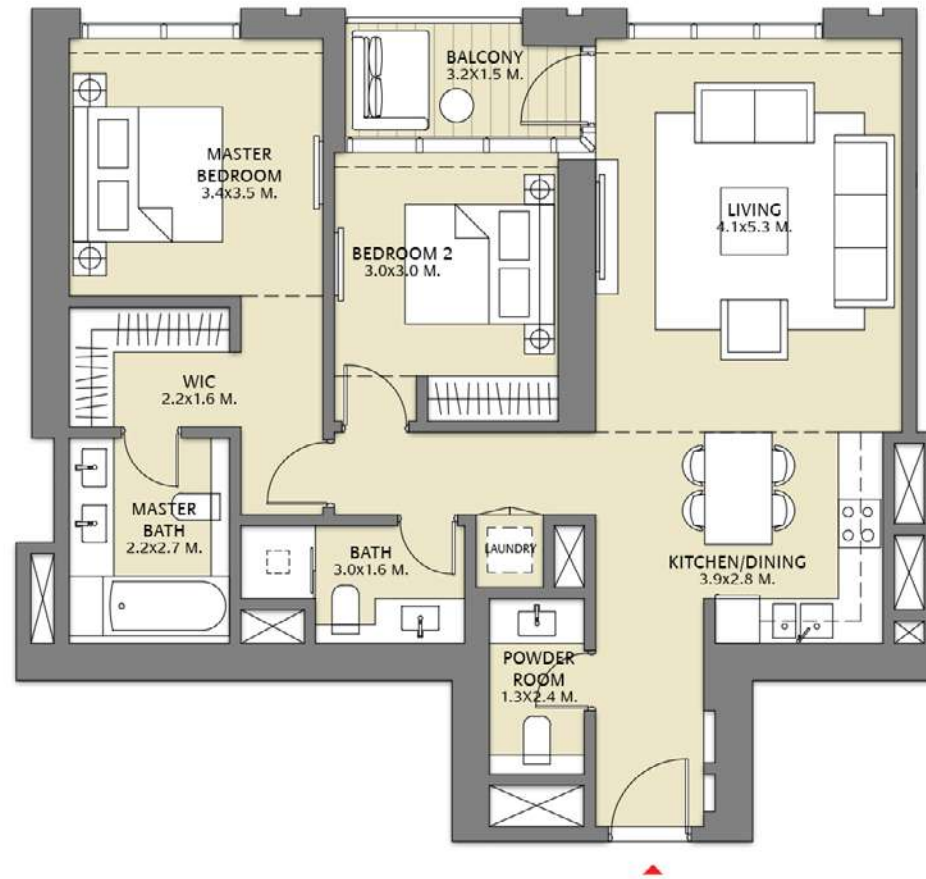
Suite Area	1059.06 Sq.ft. / 98.39 Sq.m.
Balcony Area	86.76 Sq.ft. / 8.06 Sq.m.
Total Area	1145.82 Sq.ft. / 106.45 Sq.m.



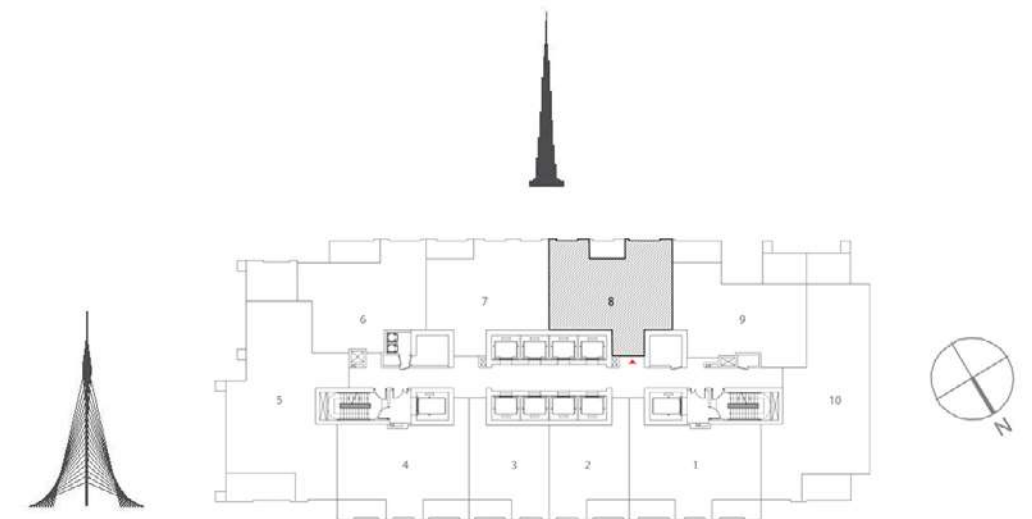
1. All dimensions are in imperial and metric, and measured to structural elements and exclude wall finishes and construction tolerances. 2. All materials, dimensions, and drawings are approximate only. 3. Information is subject to change without notice, at developer's absolute discretion. 4. Actual area may vary from the stated area. 5. Drawings not to scale. 6. All images used are for illustrative purposes only and do not represent the actual size, features, specifications, fittings, and furnishings. 7. The developer reserves the right to make revisions/alterations, at its absolute discretion, without any liability whatsoever.



TOWER 1  
2 BEDROOM W/BALCONY  
UNIT 08/ LEVELS 2-15, 17-35

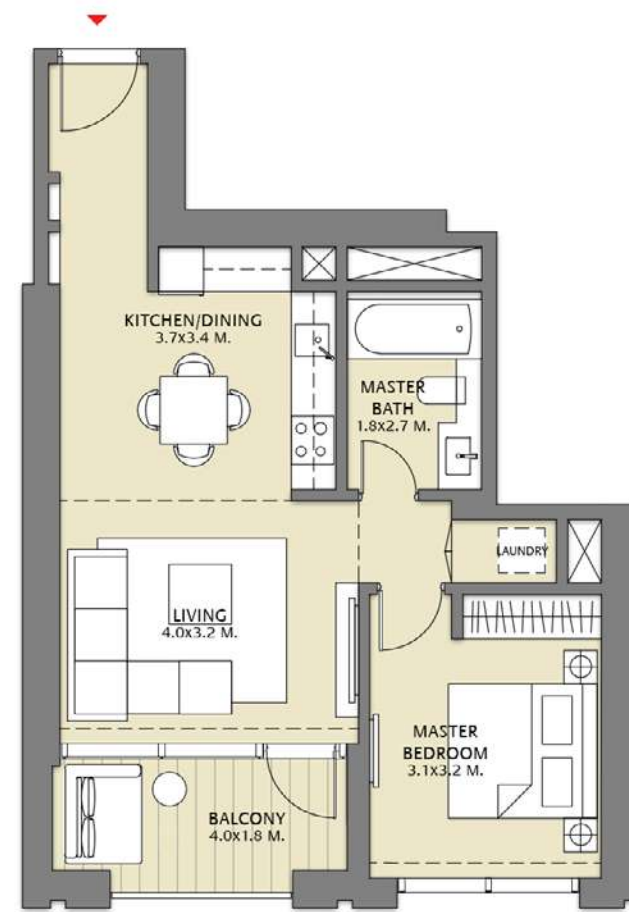


Suite Area	1046.36 Sq.ft. / 97.21 Sq.m.
Balcony Area	56.08 Sq.ft. / 5.21 Sq.m.
Total Area	1102.44 Sq.ft. / 102.42 Sq.m.

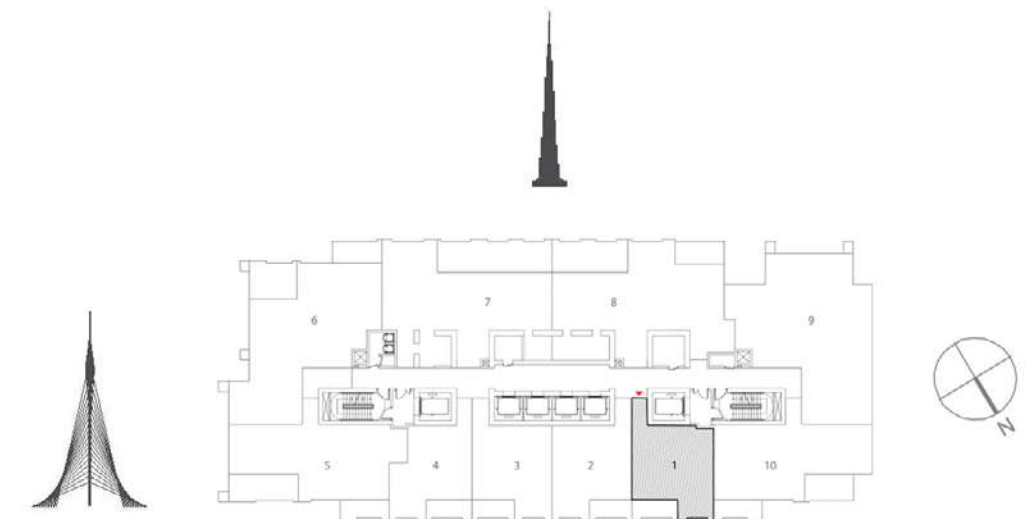


1. All dimensions are in imperial and metric, and measured to structural elements and exclude wall finishes and construction tolerances. 2. All materials, dimensions, and drawings are approximate only. 3. Information is subject to change without notice, at developer's absolute discretion. 4. Actual area may vary from the stated area. 5. Drawings not to scale. 6. All images used are for illustrative purposes only and do not represent the actual size, features, specifications, fittings, and furnishings. 7. The developer reserves the right to make revisions/alterations, at its absolute discretion, without any liability whatsoever.

TOWER 1  
1 BEDROOM W/BALCONY  
UNIT 01/ LEVELS 37-53



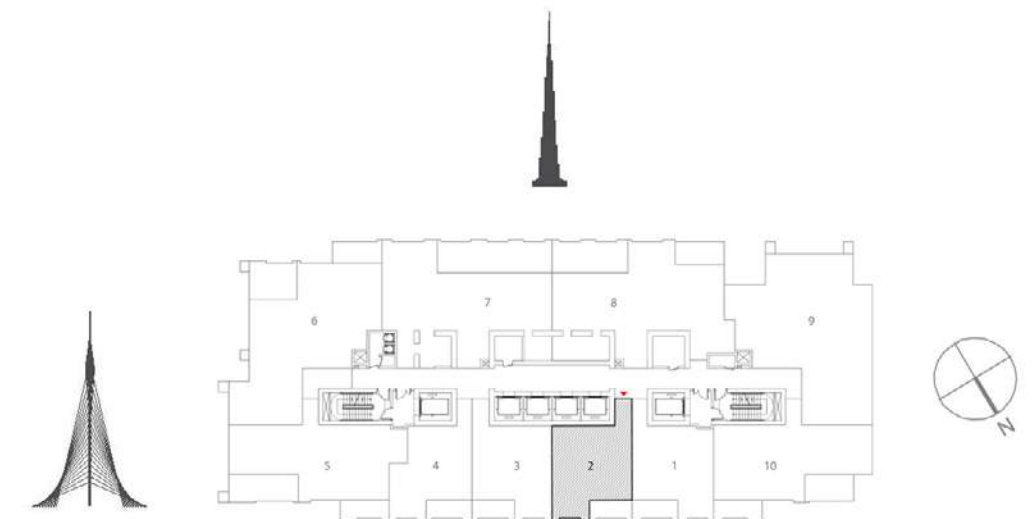
Suite Area	597.18 Sq.ft. / 55.48 Sq.m.
Balcony Area	84.28 Sq.ft. / 7.83 Sq.m.
Total Area	681.46 Sq.ft. / 63.31 Sq.m.



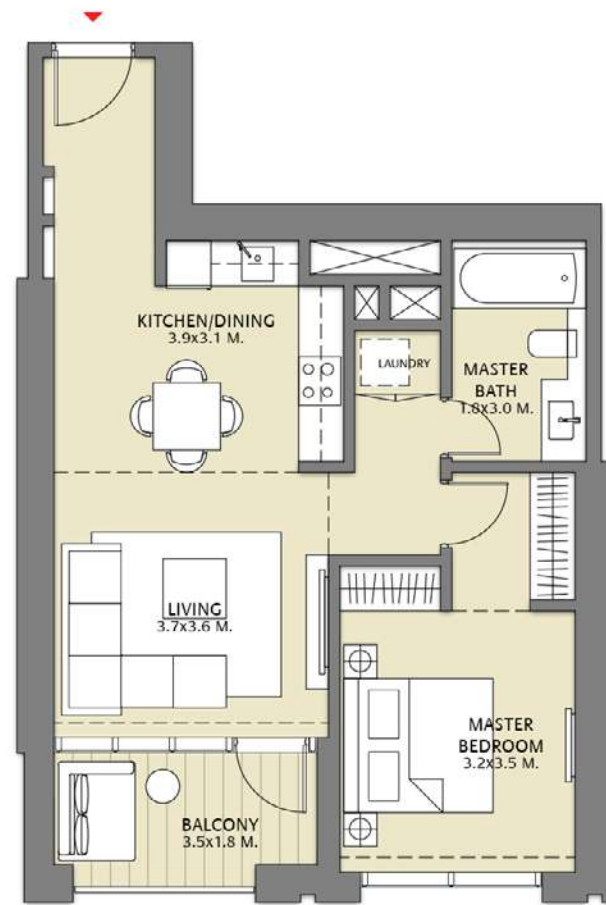
TOWER 1  
1 BEDROOM W/BALCONY  
UNIT 02/ LEVELS 37-53



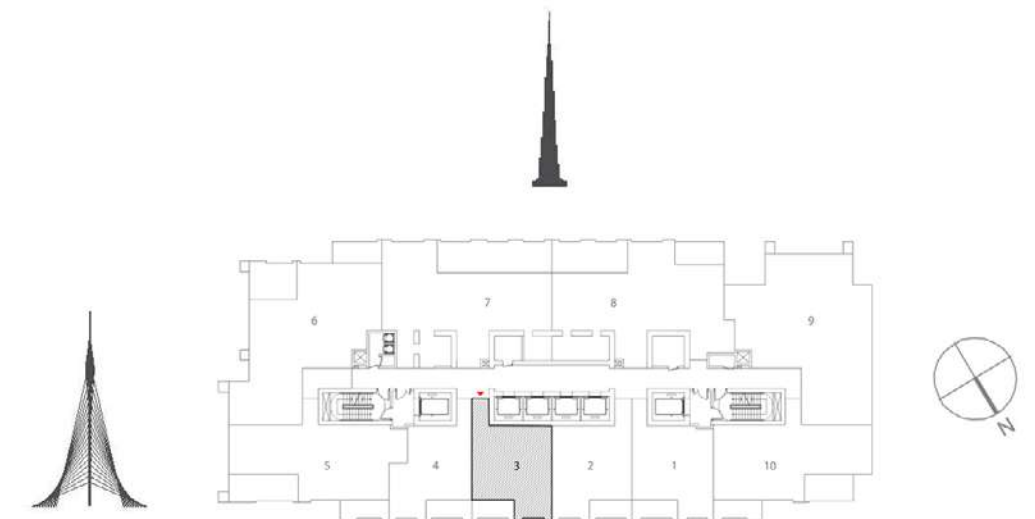
Suite Area	658.75 Sq.ft. / 61.20 Sq.m.
Balcony Area	76.42 Sq.ft. / 7.10 Sq.m.
Total Area	735.18 Sq.ft. / 68.30 Sq.m.



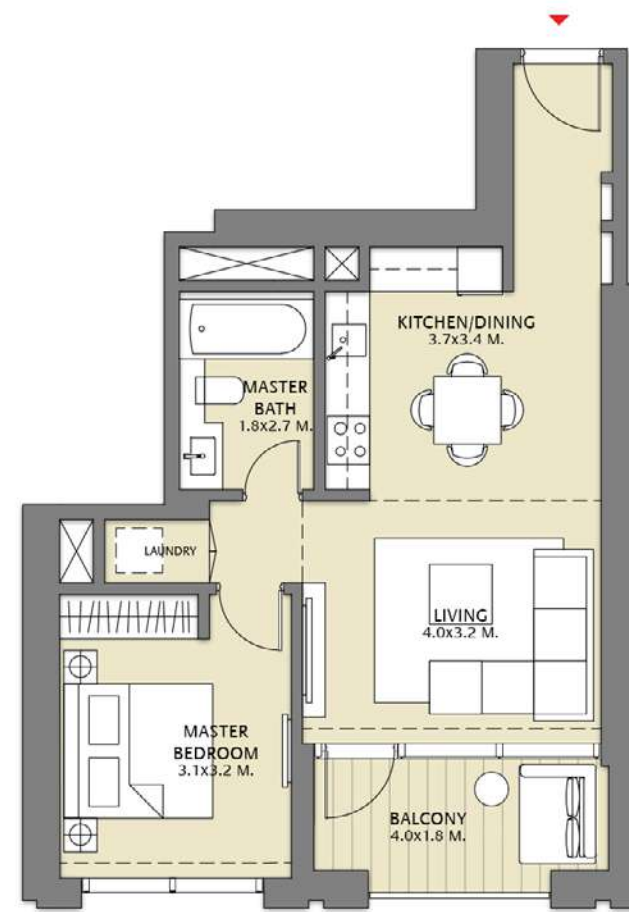
TOWER 1  
1 BEDROOM W/BALCONY  
UNIT 03/ LEVELS 37-53



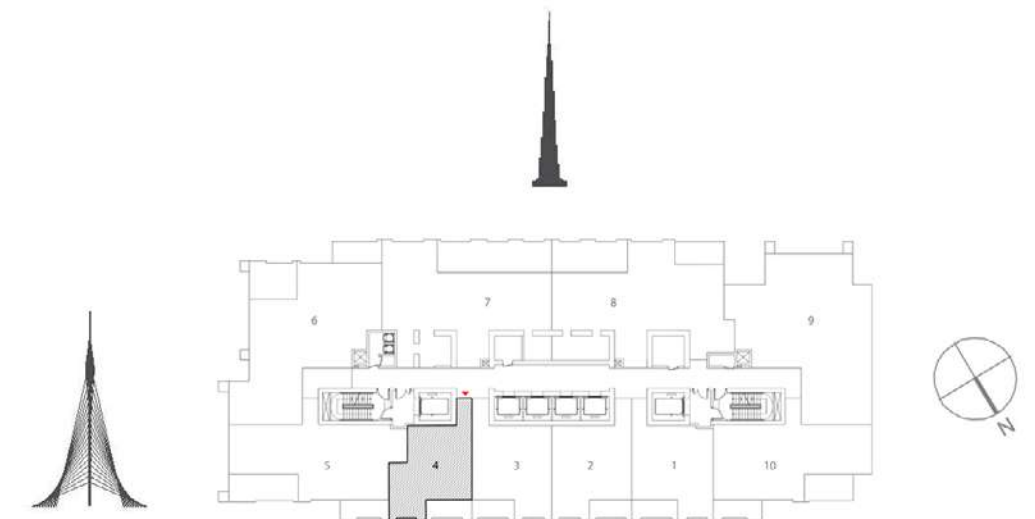
Suite Area	658.75 Sq.ft. / 61.20 Sq.m.
Balcony Area	76.42 Sq.ft. / 7.10 Sq.m.
Total Area	735.18 Sq.ft. / 68.30 Sq.m.



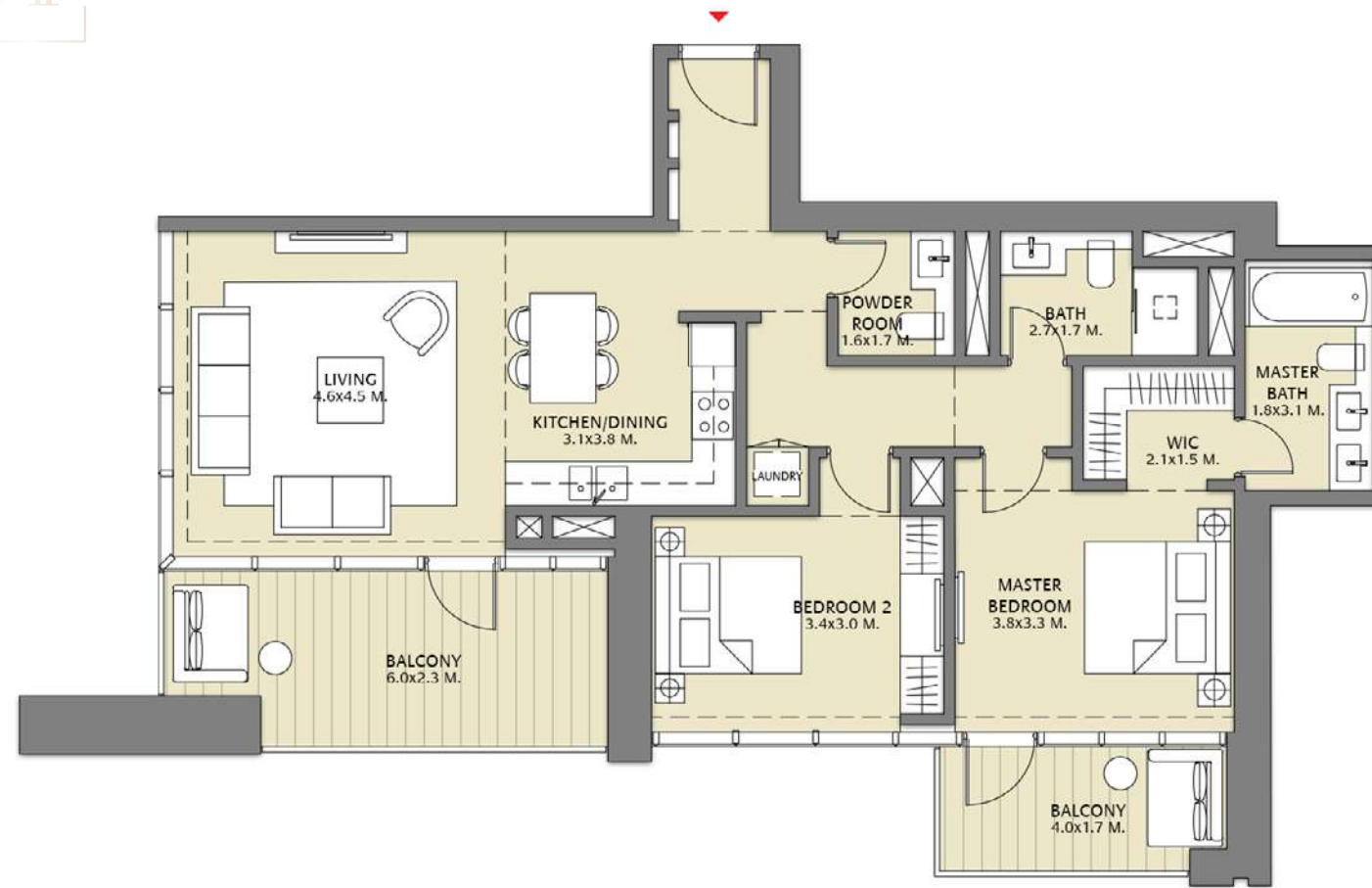
TOWER 1  
1 BEDROOM W/BALCONY  
UNIT 04/ LEVELS 37-53



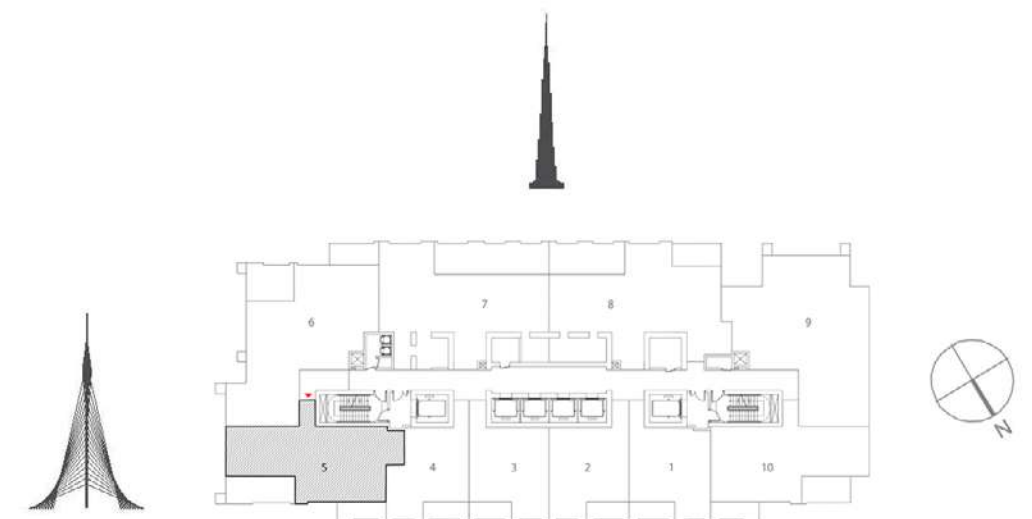
Suite Area	597.18 Sq.ft. / 55.48 Sq.m.
Balcony Area	84.28 Sq.ft. / 7.83 Sq.m.
Total Area	681.46 Sq.ft. / 63.31 Sq.m.



TOWER 1  
2 BEDROOM W/BALCONY  
UNIT 05/ LEVELS 37-53

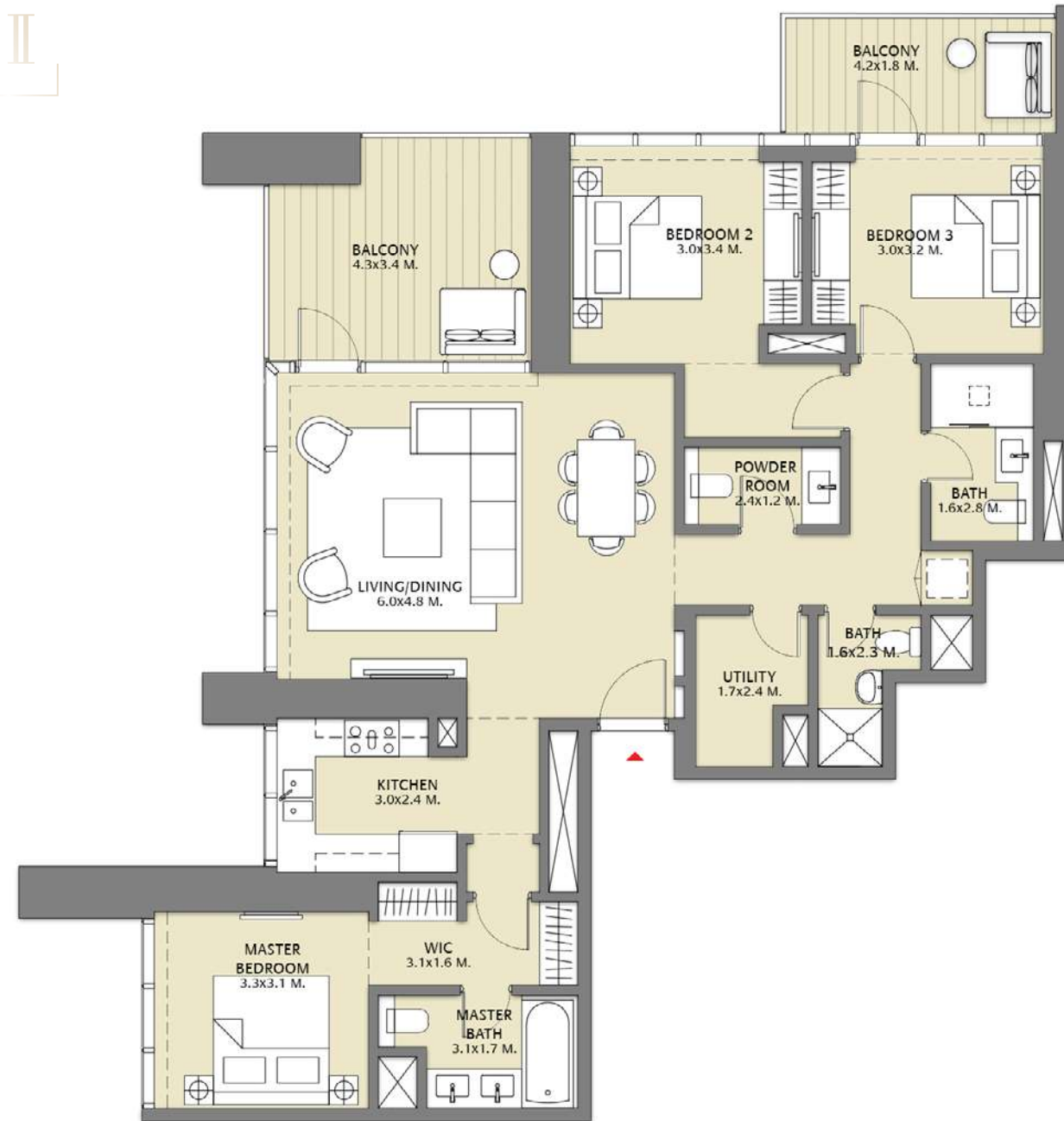


Suite Area	1053.79 Sq.ft. / 97.90 Sq.m.
Balcony Area	250.69 Sq.ft. / 23.29 Sq.m.
Total Area	1304.48 Sq.ft. / 121.19 Sq.m.

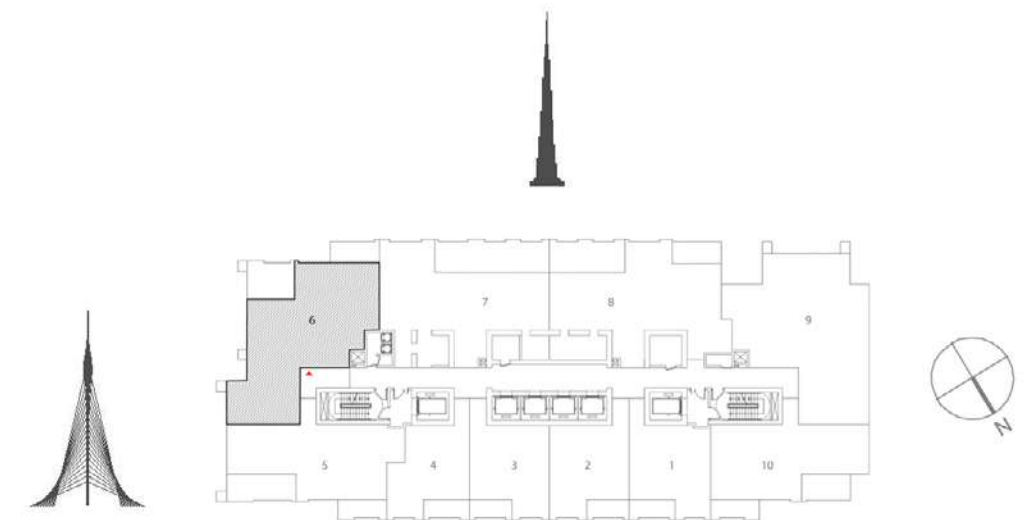


1. All dimensions are in imperial and metric, and measured to structural elements and exclude wall finishes and construction tolerances. 2. All materials, dimensions, and drawings are approximate only. 3. Information is subject to change without notice, at developer's absolute discretion. 4. Actual area may vary from the stated area. 5. Drawings not to scale. 6. All images used are for illustrative purposes only and do not represent the actual size, features, specifications, fittings, and furnishings. 7. The developer reserves the right to make revisions/alterations, at its absolute discretion, without any liability whatsoever.

TOWER 1  
3 BEDROOM W/BALCONY  
UNIT 06/ LEVELS 37-53

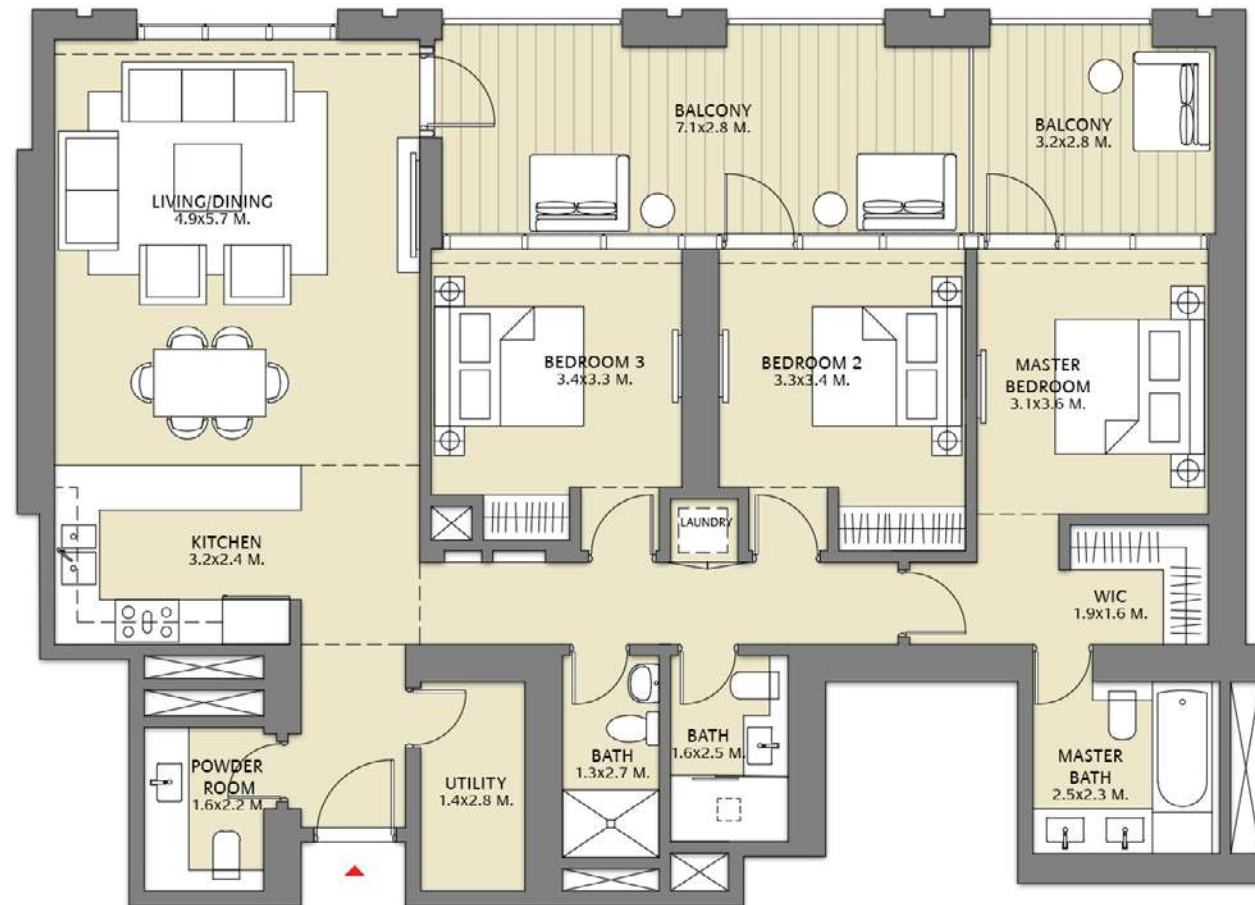


Suite Area	1359.91 Sq.ft. / 126.34 Sq.m.
Balcony Area	255.75 Sq.ft. / 23.76 Sq.m.
Total Area	1615.66 Sq.ft. / 150.10 Sq.m.

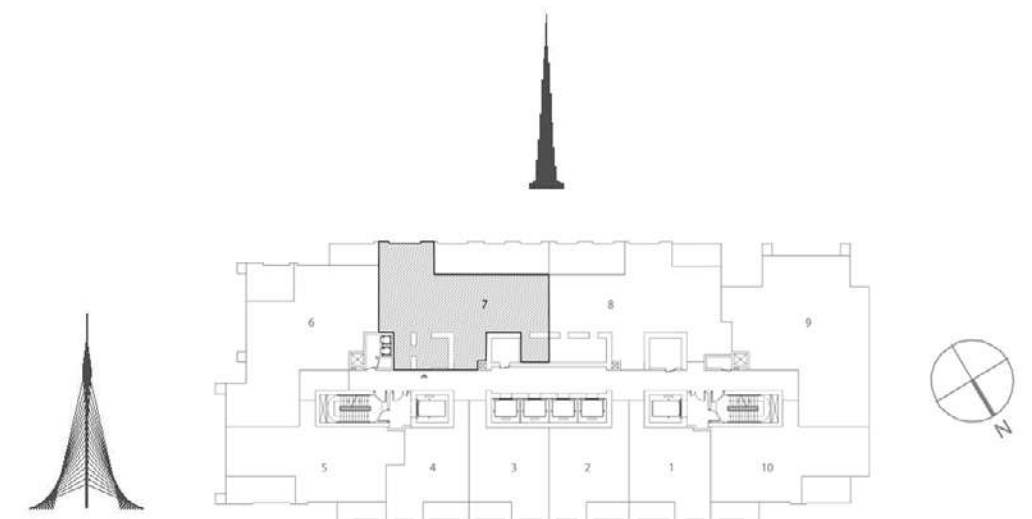


1. All dimensions are in imperial and metric, and measured to structural elements and exclude wall finishes and construction tolerances. 2. All materials, dimensions, and drawings are approximate only. 3. Information is subject to change without notice, at developer's absolute discretion. 4. Actual area may vary from the stated area. 5. Drawings not to scale. 6. All images used are for illustrative purposes only and do not represent the actual size, features, specifications, fittings, and furnishings. 7. The developer reserves the right to make revisions/alterations, at its absolute discretion, without any liability whatsoever.

TOWER 1  
3 BEDROOM W/BALCONY  
UNIT 07/ LEVELS 37-53



Suite Area	1453.24 Sq.ft. / 135.01 Sq.m.
Balcony Area	325.61 Sq.ft. / 30.25 Sq.m.
Total Area	1778.84 Sq.ft. / 165.26 Sq.m.



1. All dimensions are in imperial and metric, and measured to structural elements and exclude wall finishes and construction tolerances. 2. All materials, dimensions, and drawings are approximate only. 3. Information is subject to change without notice, at developer's absolute discretion. 4. Actual area may vary from the stated area. 5. Drawings not to scale. 6. All images used are for illustrative purposes only and do not represent the actual size, features, specifications, fittings, and furnishings. 7. The developer reserves the right to make revisions/alterations, at its absolute discretion, without any liability whatsoever.



# DOWNTOWN VIEWS II

# داون تاون فيوز II

For more information on **Downtown Views II** located in Downtown Dubai, please call 800 36227(UAE) or +971 4 366 1668 (International). Visit our online sales centre at [emaar.com](http://emaar.com) or any of our sales centres across the UAE.

## DUBAI:

Emaar Sales Center, Downtown Dubai, Dubai  
Dubai Hills Estate Sales Pavillion: Umm Suqeim Road  
Dubai Creek Harbour Sales Centre: Ras Al Khor

## ABU DHABI:

Emaar Sales Centre: Al Nahda Tower, Ground Floor, 4th Street,  
Corniche, Al Muroor Road

Open from Saturday - Thursday, from 8.30am - 6.00pm



للمزيد من المعلومات حول مشروع داون تاون فيوز II يرجى الاتصال بالرقم (٨٠٠٣٦٢٢٧) في الإمارات العربية المتحدة دولي أو +٩٧١ ٤ ٣٦٦ ١٦٨٨ أو قم بزيارة مركز مبيعاتنا الإلكتروني على الموقع [emaar.com](http://emaar.com)

## دبي

مركز مبيعات إعمار في وسط مدينة دبي - دبي  
مركز مبيعات دبي هيلز استيت على طريق أم سقيم - دبي  
مركز مبيعات خور دبي في رأس الخور - دبي

## أبوظبي

مركز مبيعات إعمار في برج النهضة، الشارع الرابع،  
الكورنيش، طريق المرور - أبوظبي

السبت إلى الخميس من الساعة ٨:٣٠ صباحاً حتى الساعة ٦ مساءً

