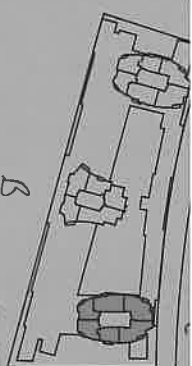
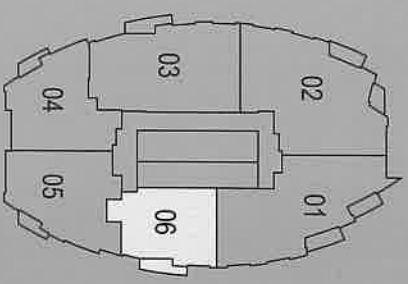
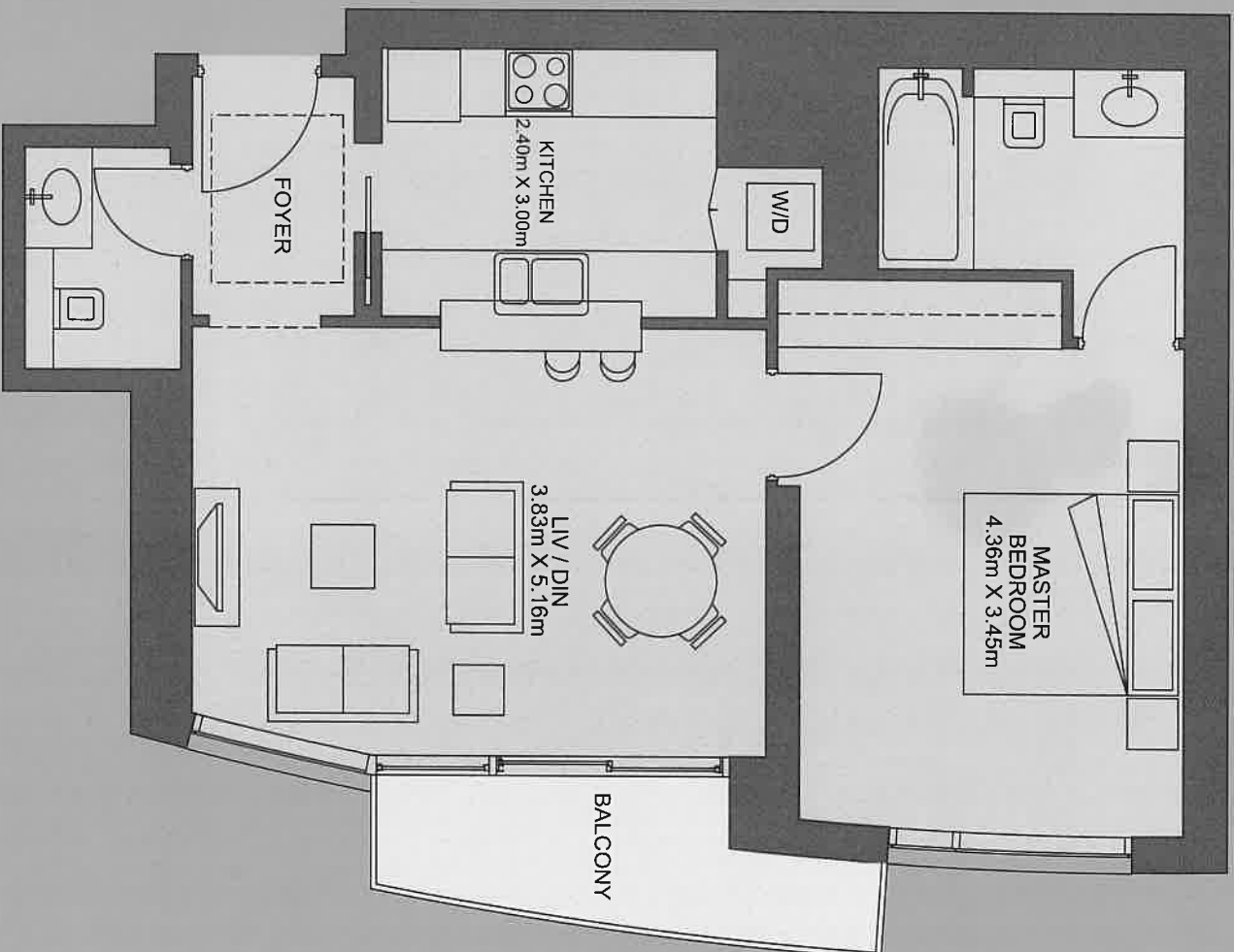


Total Area : 72.7 SQM / 783 SQF



East Tower



NOTE:

- A). The calculation of the suite area is measured as the area bounded by the centre lines of demising or parting walls separating one unit from another unit, the exterior surface of all exterior walls, and the exterior surface of the corridor wall enclosing and abutting the unit. This excludes the principal mechanical, electrical and plumbing ("MEP") risers that are not directly serving the suite, terrace, patio and/or the roof deck.
- B). All materials, dimensions & drawings are approximate. Information subject to change without notice. Actual usable floor space may vary from the stated floor plan. Do not scale drawing. E&CO. The developer reserves the right to make revisions.

East Tower

Suite 05

Typical Floors

1 Bedroom

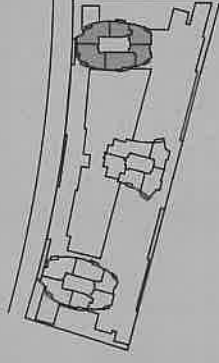
Suite Area : 86.2 SQM / 928 SQF

Balcony Area: 3.5 SQM / 38 SQF

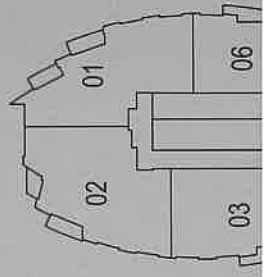
Total Area: 89.7 SQM / 966 SQF

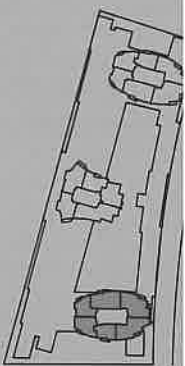


INDICATIVE LOCATION
BURJ DUBAI

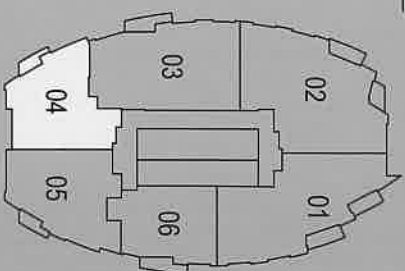


East Tower





East Tower



NOTE:

- A). The calculation of the suite area is measured as the area bounded by the centre lines of demising or partying walls separating one unit from another unit, the exterior surface of all exterior walls, and the exterior surface of the corridor wall enclosing and abutting the unit. This excludes the principal mechanical, electrical and plumbing ("MEP") risers that are not directly serving the suite, terrace, patio and/or the roof deck.
- B). All materials, dimensions & drawings are approximate. Information subject to change without notice. Actual usable floor space may vary from the stated floor plan. Do not scale drawing. E&EO. The developer reserves the right to make revisions.

| | |
|------------|----------|
| East Tower | Suite 03 |
|------------|----------|

Typical Floors

2 Bedroom

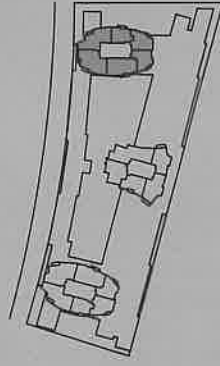
Suite Area : 115.3 SQM / 1241 SQF

Balcony Area: 5.4 SQM / 58 SQF

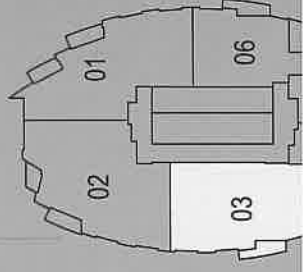
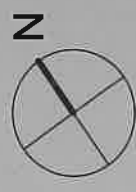
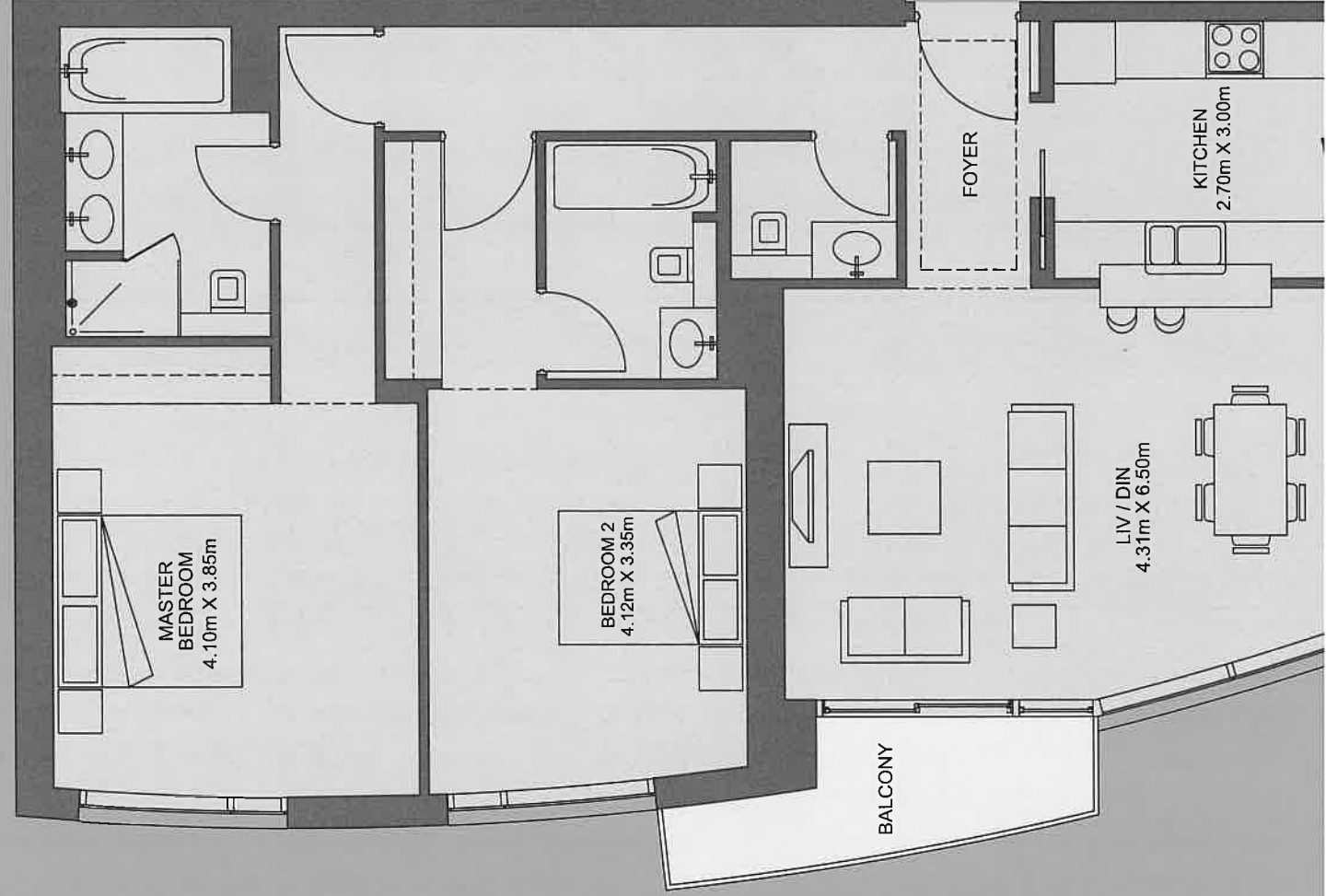
Total Area: 120.7 SQM / 1299 SQF

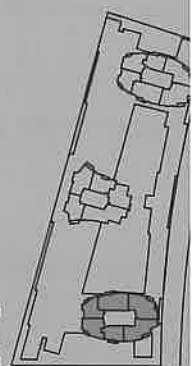


INDICATIVE LOCATION
BURJ DUBAI



East Tower





East Tower



NOTE:

- A). The calculation of the suite area is measured as the area bounded by the centre lines of demising or partying walls separating one unit from another unit, the exterior surface of all exterior walls, and the exterior surface of the corridor wall enclosing and abutting the unit. This excludes the principal mechanical, electrical and plumbing ("MEP") risers that are not directly serving the suite, terrace, patio and/or the roof deck.
- B). All materials, dimensions & drawings are approximate. Information subject to change without notice. Actual usable floor space may vary from the stated floor plan. Do not scale drawing. E&EO. The developer reserves the right to make revisions.

East Tower Suite 01

Typical Floors

2 Bedroom

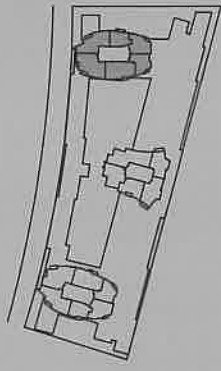
Suite Area : 116.0 SQM / 1249 SQF

Balcony Area: 9.2 SQM / 99 SQF

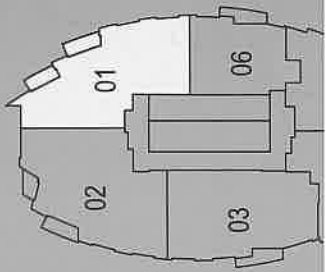
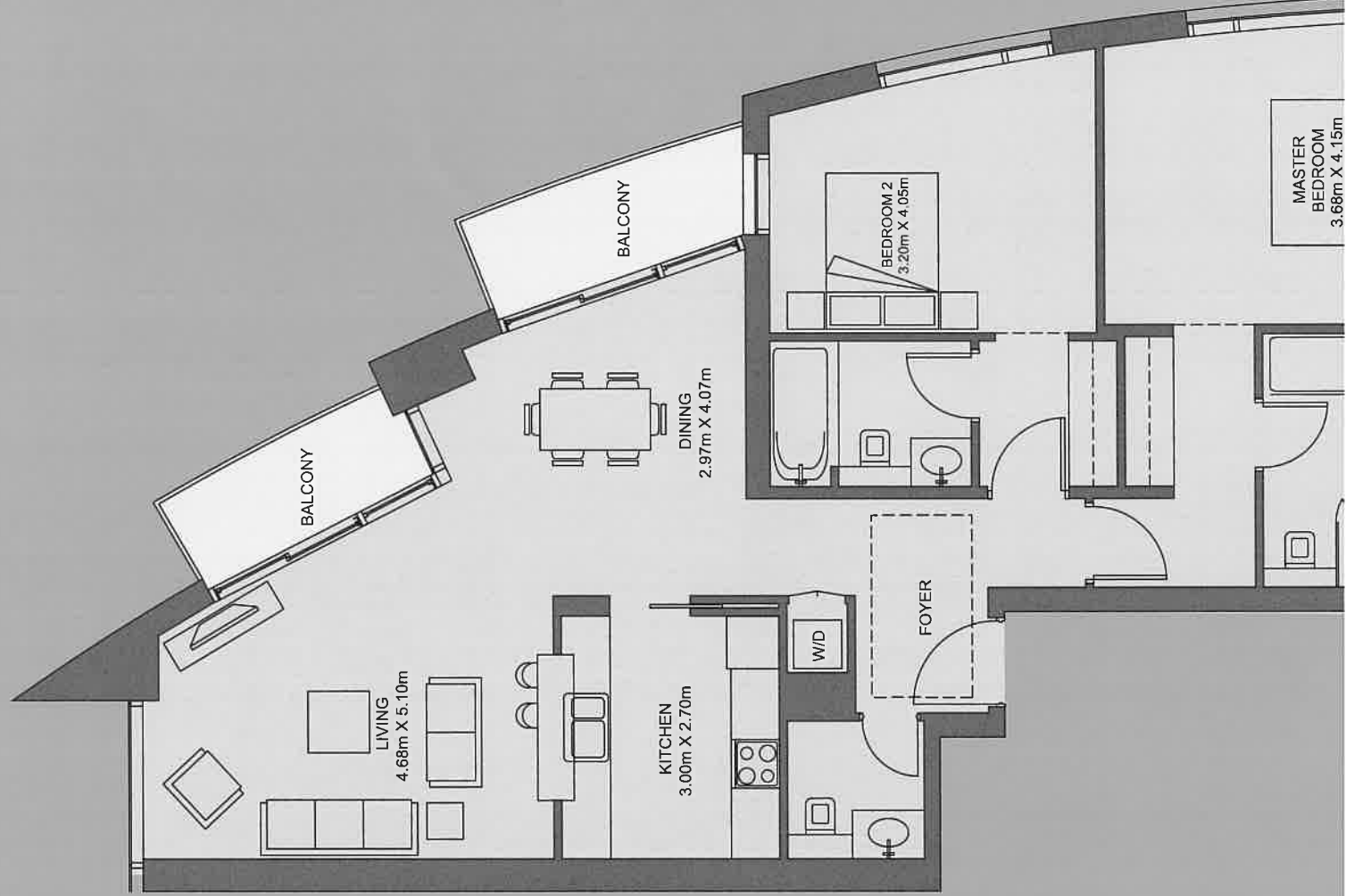
Total Area: 125.2 SQM / 1348 SQF



INDICATIVE LOCATION BURJ DUBAI

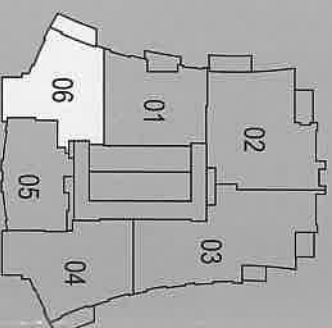


East Tower





Central Tower



NOTE:

- A) The calculation of the suite area is measured as the area bounded by the centre lines of demising or parting walls separating one unit from another unit, the exterior surface of all exterior walls, and the exterior surface of the corridor wall enclosing and abutting the unit. This excludes the principal mechanical, electrical and plumbing ("MEP") risers that are not directly serving the suite, terrace, patio and/or the roof deck.
- B) All materials, dimensions & drawings are approximate. Information subject to change without notice. Actual usable floor space may vary from the stated floor plan. Do not scale drawing. E&E/O. The developer reserves the right to make revisions.

Central Tower

Suite 05

Typical Floors

1 Bedroom

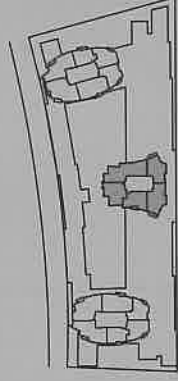
Suite Area : 67.5 SQM / 727 SQF

Balcony Area : 0.0 SQM / 0 SQF

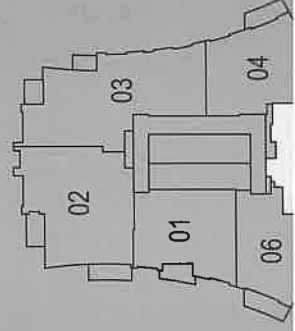
Total Area : 67.5 SQM / 727 SQF



INDICATIVE LOCATION
BURJ DUBAI



Central Tower





Central Tower



NOTE:

- A). The calculation of the suite area is measured as the area bounded by the centre lines of demising or partying walls separating one unit from another unit, the exterior surface of all exterior walls, and the exterior surface of the corridor wall enclosing and abutting the unit. This excludes the principal mechanical, electrical and plumbing ("MEP") risers that are not directly serving the suite, terrace, patio and/or the roof deck.
- B). All materials, dimensions & drawings are approximate. Information subject to change without notice. Actual usable floor space may vary from the stated floor plan. Do not scale drawing. E&EO. The developer reserves the right to make revisions.

Central Tower

Suite 03

Typical Floors

2 Bedroom

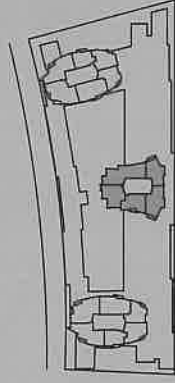
Suite Area : 128.6 SQM / 1384 SQF

Balcony Area: 7.8 SQM / 84 SQF

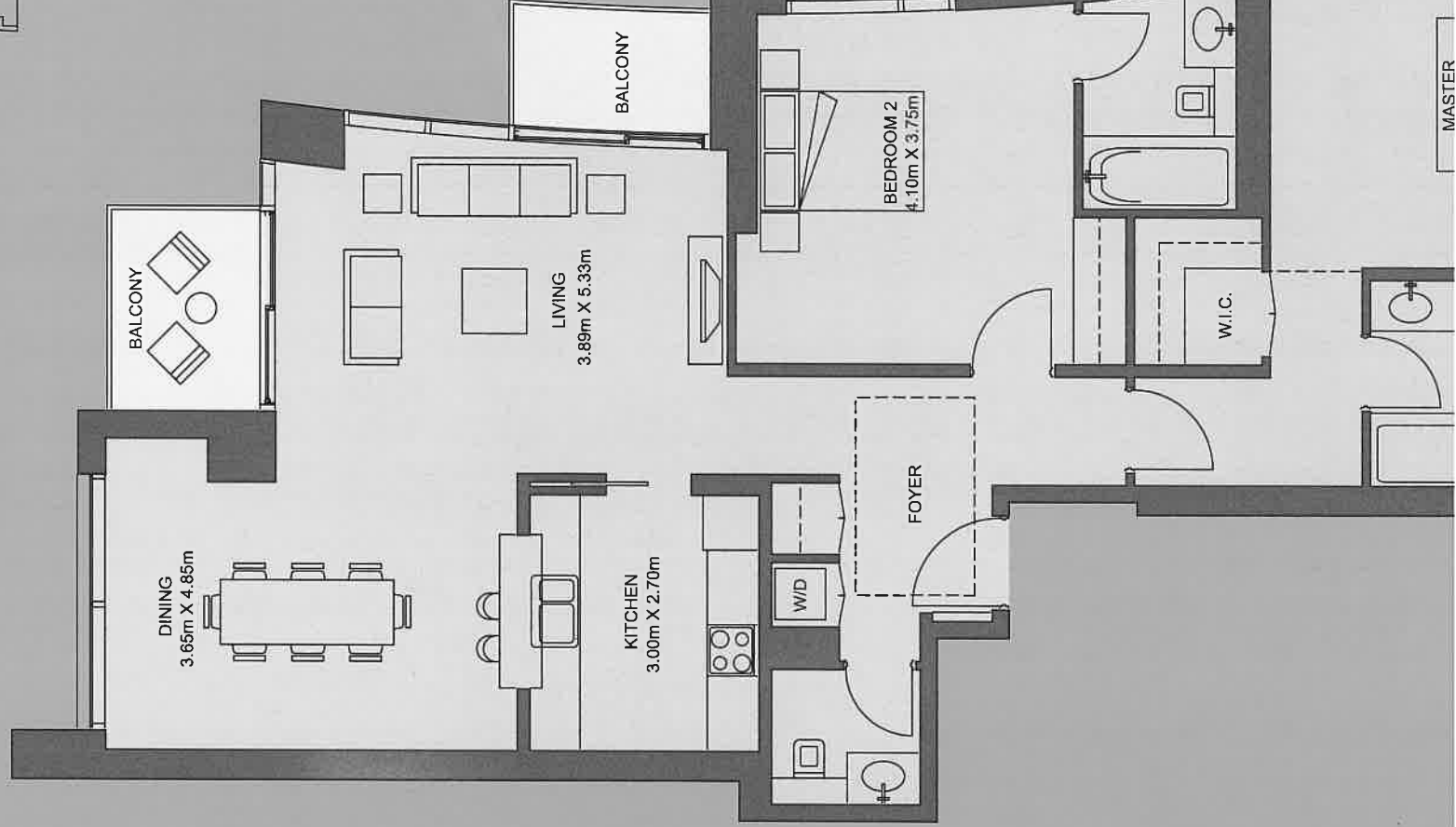
Total Area: 136.4 SQM / 1468 SQF

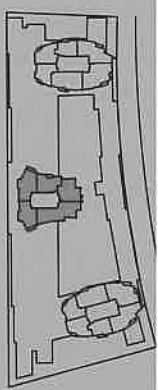


INDICATIVE LOCATION
BURJ DUBAI

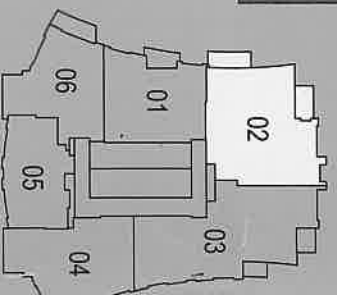


Central Tower





Central Tower



NOTE:

- A). The calculation of the suite area is measured as the area bounded by the centre lines of demising or partying walls separating one unit from another unit, the exterior surface of all exterior walls, and the exterior surface of the corridor wall enclosing and abutting the unit. This excludes the principal mechanical, electrical and plumbing ("MEP") risers that are not directly serving the suite, terrace, patio and/or the roof deck.
- B). All materials, dimensions & drawings are approximate. Information subject to change without notice. Actual usable floor space may vary from the stated floor plan. Do not scale drawing. E&EO. The developer reserves the right to make revisions.

| | |
|---------------|----------|
| Central Tower | Suite 01 |
|---------------|----------|

Typical Floors

1 Bedroom

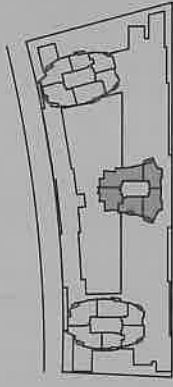
Suite Area : 79.3 SQM / 854 SQF

Balcony Area: 5.7 SQM / 61 SQF

Total Area: 85.0 SQM / 915 SQF

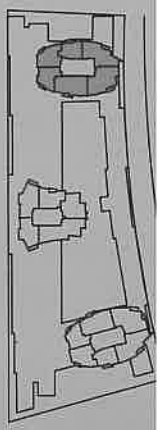


INDICATIVE LOCATION
BURJ DUBAI

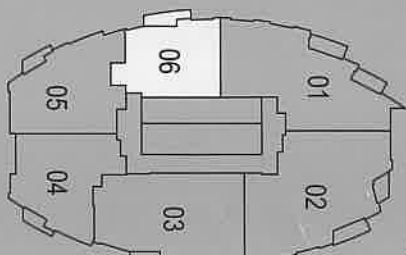
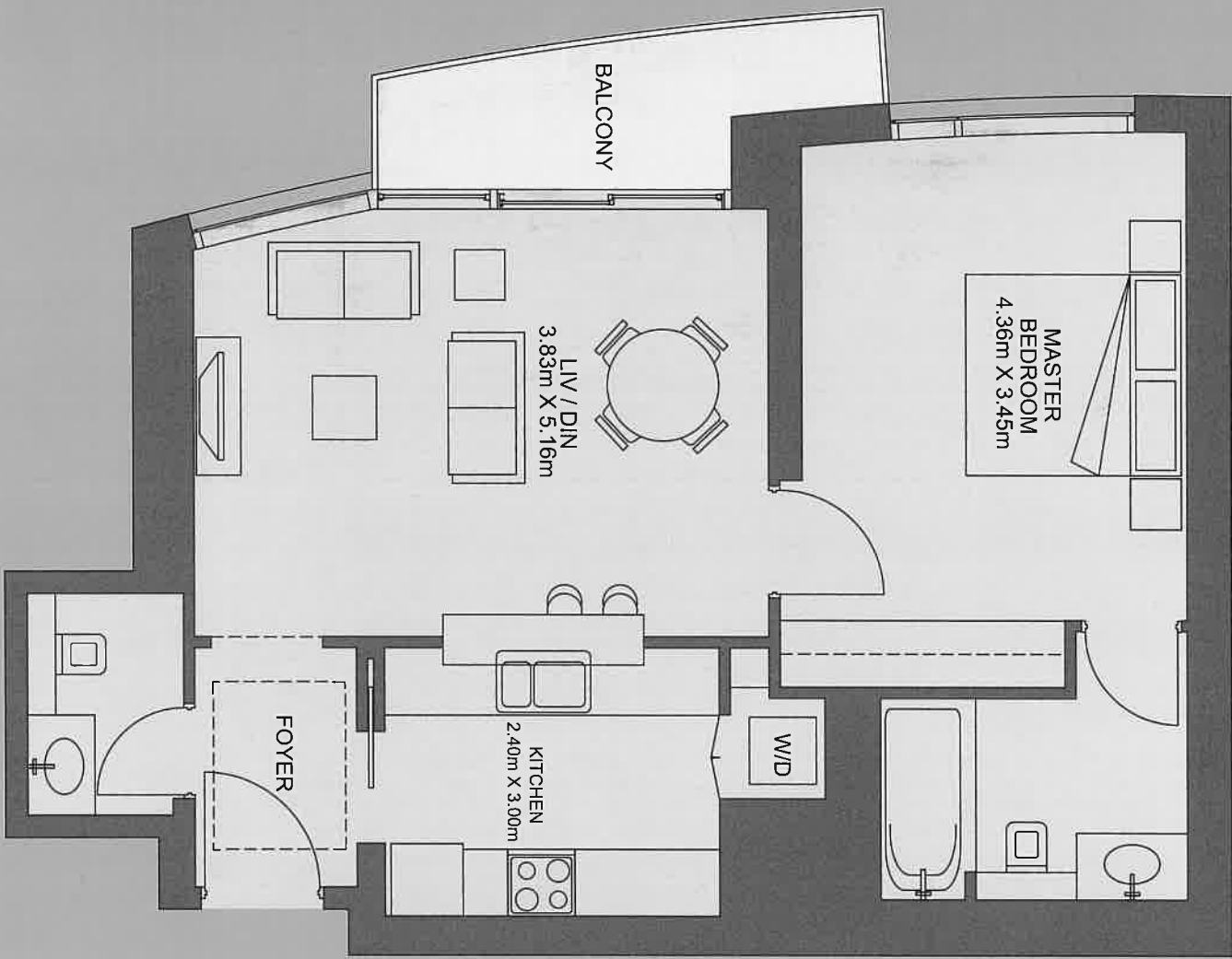


Central Tower





West Tower



NOTE:

- A). The calculation of the suite area is measured as the area bounded by the centre lines of demising or parting walls separating one unit from another unit, the exterior surface of all exterior walls, and the exterior surface of the corridor wall enclosing and abutting the unit. This excludes the principal mechanical, electrical and plumbing ("MEP") risers that are not directly serving the suite, terrace, patio and/or the roof deck.
- B). All materials, dimensions & drawings are approximate. Information subject to change without notice. Actual usable floor space may vary from the stated floor plan. Do not scale drawing. E&EO. The developer reserves the right to make revisions.

West Tower

Suite 05

Typical Floors

1 Bedroom

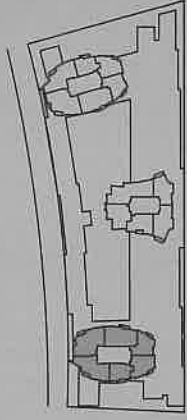
Suite Area : 86.2 SQM / 928 SQF

Balcony Area : 3.5 SQM / 38 SQF

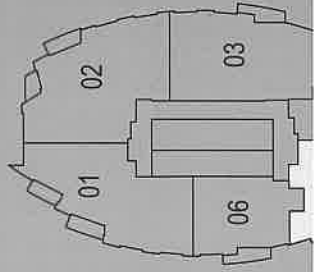
Total Area : 89.7 SQM / 966 SQF

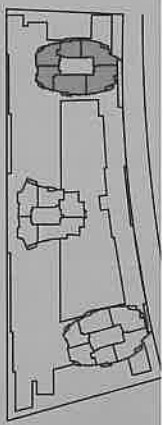


INDICATIVE LOCATION
BURJ DUBAI

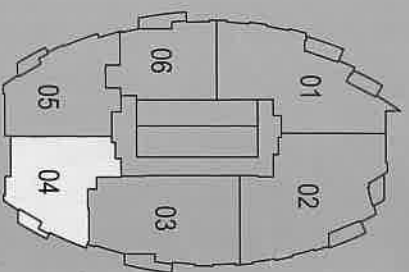


West Tower





West Tower



NOTE:

- A) The calculation of the suite area is measured as the area bounded by the centre lines of demising or parting walls separating one unit from another unit, the exterior surface of all exterior walls, and the exterior surface of the corridor wall enclosing and abutting the unit. This excludes the principal mechanical, electrical and plumbing ("MEP") risers that are not directly serving the suite, terrace, patio and/or the roof deck.
- B). All materials, dimensions & drawings are approximate. Information subject to change without notice. Actual usable floor space may vary from the stated floor plan. Do not scale drawing. E&EO. The developer reserves the right to make revisions.

West
Tower

Suite
03

Typical Floors

2 Bedroom

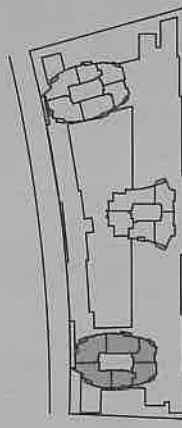
Suite Area : 115.3 SQM / 1241 SQF

Balcony Area: 5.4 SQM / 58 SQF

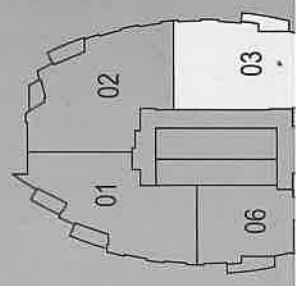
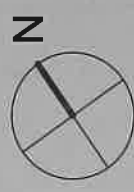
Total Area: 120.7 SQM / 1299 SQF

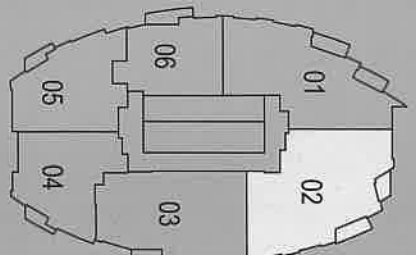
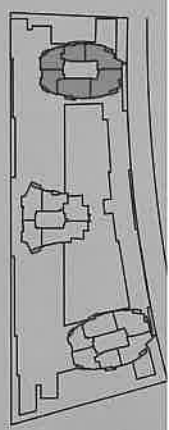


INDICATIVE LOCATION
BURJ DUBAI



West Tower





NOTE:

- A) The calculation of the suite area is measured as the area bounded by the centre lines of demising or partying walls separating one unit from another unit, the exterior surface of all exterior walls, and the exterior surface of the corridor wall enclosing and abutting the unit. This excludes the principal mechanical, electrical and plumbing ("MEP") risers that are not directly serving the suite, terrace, patio and/or the roof deck.
- B) All materials, dimensions & drawings are approximate. Information subject to change without notice. Actual usable floor space may vary from the stated floor plan. Do not scale drawing. E&EO. The developer reserves the right to make revisions.

| | |
|------------|----------|
| West Tower | Suite 01 |
|------------|----------|

Typical Floors

2 Bedroom

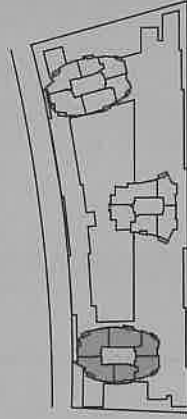
Suite Area : 116.0 SQM / 1249 SQF

Balcony Area : 9.2 SQM / 99 SQF

Total Area : 125.2 SQM / 1348 SQF



INDICATIVE LOCATION
BURJ DUBAI



West Tower

