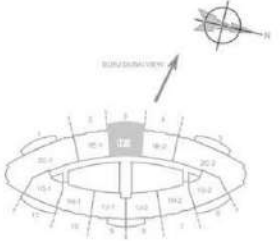
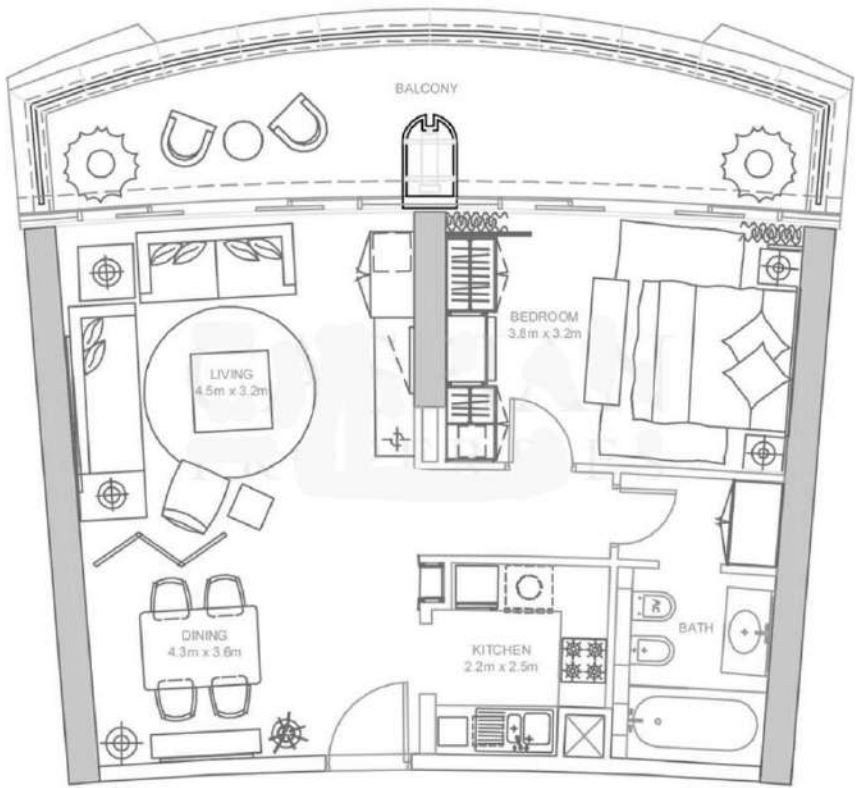


BURJ DUBAI

BURJ DUBAI LAKE HOTEL

NOVEMBER 2014 - AS PER EMAR'S ORACLE SYSTEM



1 Bedroom Apartment (11,00RS 49.54)

Unit 1F-1

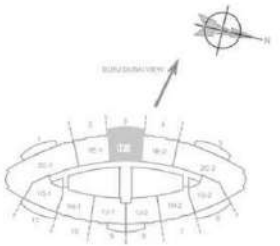
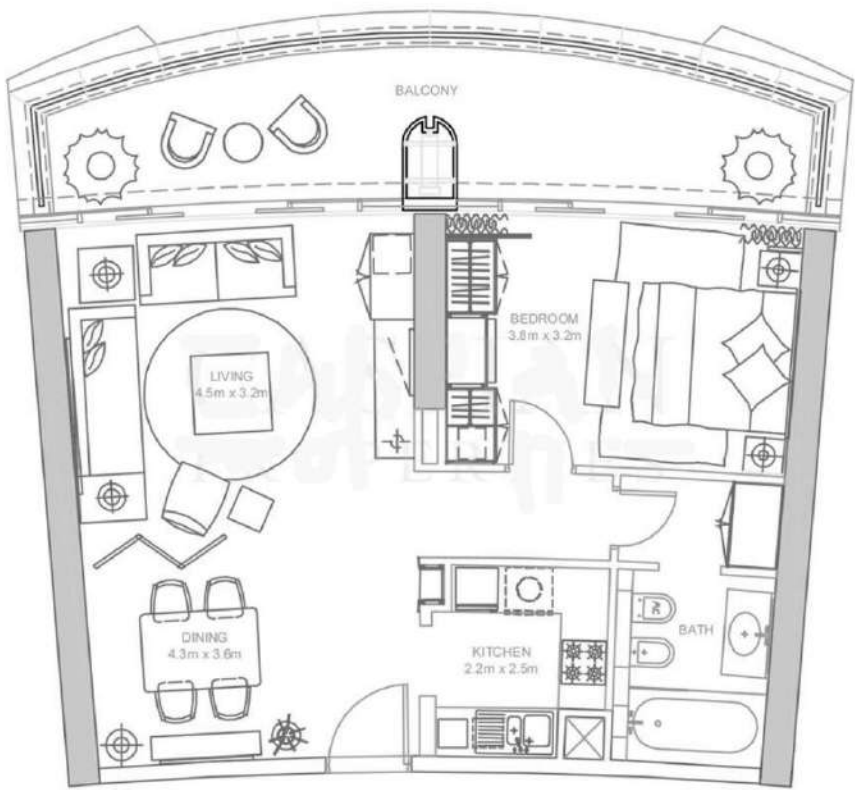
Apartment Area	70.14 SQM.	755 SQFT.
Balcony Area	20.06 SQM.	216 SQFT.
<b>Total Area</b>	<b>90.20 SQM.</b>	<b>971 SQFT.</b>

Note: 1. All room dimensions are in imperial and measured to structural elements and exclude wall finishes and construction tolerances. 2. All dimensions have been provided by our consultant Architect. 3. All materials, dimensions & drawings are approximate. Information subject to change without notice. 4. Actual size may vary from the stated area. Drawings not to scale 1:50. The developer reserves the right to make revisions. 5. Calculation of suite is measured as the area bounded by the centre line of demising or party walls separating one unit from another unit, the exterior surface of all exterior walls, and the exterior surface of the corridor wall enclosing and abutting the unit. 6. Calculation of balcony area is measured as the area bounded by the centre lines of demising or party walls separating one unit from another unit, the outermost face of the enclosing guard and internal face of the site abutting the balcony. 7. The units are measured at level 49 in the building. Columns above this level may reduce in size, while floors below may increase in size.

BURJ DUBAI

BURJ DUBAI LAKE HOTEL

NOVEMBER 2014 - AS PER EMAR'S ORACLE SYSTEM

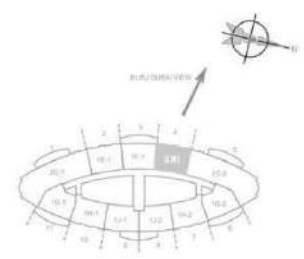
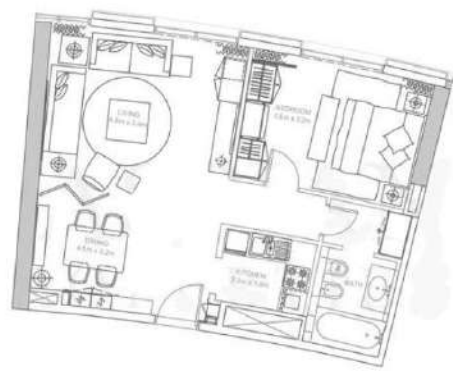


1 Bedroom Apartment (11,00RS 49.54)

Unit 1F-1

Apartment Area	70.14 SQM.	755 SQFT.
Balcony Area	20.06 SQM.	216 SQFT.
<b>Total Area</b>	<b>90.20 SQM.</b>	<b>971 SQFT.</b>

Note: 1. All room dimensions are in imperial and measured to structural elements and exclude wall finishes and construction tolerances. 2. All dimensions have been provided by our consultant Architect. 3. All materials, dimensions & drawings are approximate. Information subject to change without notice. 4. Actual size may vary from the stated area. Drawings not to scale 1:50. The developer reserves the right to make revisions. 5. Calculation of suite is measured as the area bounded by the centre line of demising or party walls separating one unit from another unit, the exterior surface of all exterior walls, and the exterior surface of the corridor wall enclosing and abutting the unit. 6. Calculation of balcony area is measured as the area bounded by the centre lines of demising or party walls separating one unit from another unit, the outermost face of the enclosing guard and internal face of the site abutting the balcony. 7. The units are measured at level 49 in the building. Columns above this level may reduce in size, while floors below may increase in size.



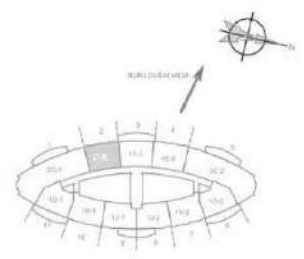
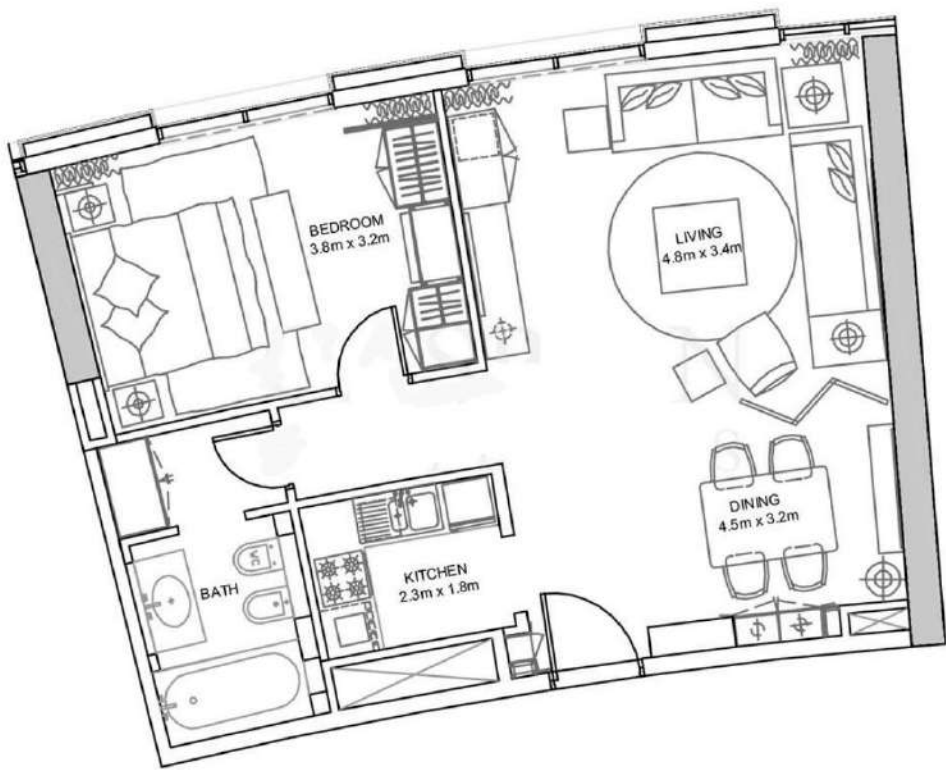
Note: 1. All room dimensions are in imperial and measured to structural elements and exclude wall finishes and construction tolerances. 2. All dimensions have been provided by our consultant Architect. 3. All materials, dimensions & drawings are approximate. Information subject to change without notice. 4. Actual size may vary from the stated area. Drawings not to scale. E&O. The developer reserves the right to make revisions. 5. Calculation of suite is measured as the area bounded by the centre line of demising or party walls separating one unit from another unit, the exterior surface of all exterior walls, and the exterior surface of the corridor wall enclosing and abutting the unit. 6. Calculation of balcony area is measured as the area bounded by the centre lines of demising or party walls separating one unit from another unit, the outermost face of the enclosing guard and external face of the site abutting the balcony. 7. The units are measured at level 4B in the building. Columns above this level may reduce in size, while floors below may increase in size.

<b>1 Bedroom Apartment</b> @100RS 49.56		
<b>Unit 1E-2</b>		
Apartment Area	68.56 SQM.	738 SQFT.
<b>Total Area:</b>	<b>68.56 SQM.</b>	<b>738 SQFT.</b>

BURJ DUBAI

BURJ DUBAI LAKE HOTEL

NOVEMBER 2004 - AS PER EMAJIS ORACLE SYSTEM

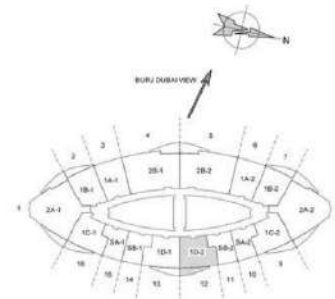
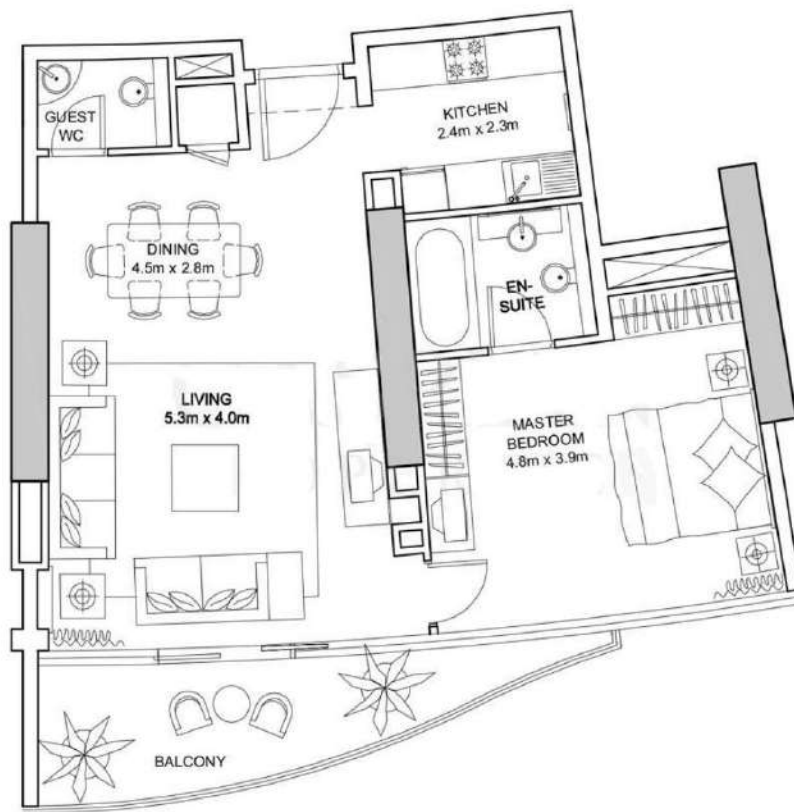


1 Bedroom Apartment (FLOORS 49-56)

Unit 1E-1

Apartment Area	68.56 SQM.	738 SQFT.
Total Area	68.56 SQM.	738 SQFT.

Note: 1. All room dimensions are in imperial and measured to structural elements and exclude wall finishes and construction tolerances. 2. All dimensions have been provided by our consultant Architect. 3. All materials, dimensions & drawings are approximate. Information subject to change without notice. 4. Actual size may vary from the stated area. Drawings not to scale E&O. The developer reserves the right to make revisions. 5. Calculation of suite is measured as the area bounded by the centre line of demising or party walls separating one unit from another unit, the exterior surface of all exterior walls, and the exterior surface of the corridor wall enclosing and abutting the unit. 6. Calculation of balcony area is measured as the area bounded by the centre line of demising or party walls separating one unit from another unit, the outermost face of the anchoring girder and external face of the site abutting the balcony. 7. The units are measured at level 49 in the building. Columns above this level may reduce in size, while floors below may increase in size.

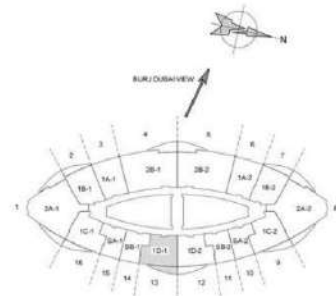
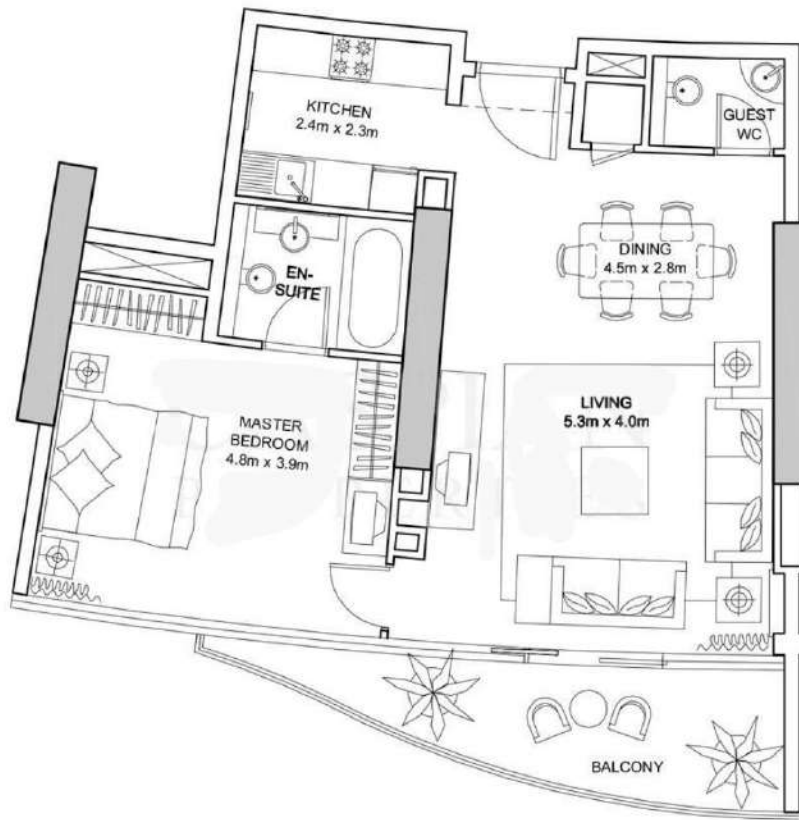


**1 Bedroom Apartment** (FLOORS 15-17)

**Unit 1D-2**

Apartment Area	74.89 SQM.	806 SQFT.
Balcony Area	11.25 SQM.	121 SQFT.
<b>Total Area</b>	<b>86.14 SQM.</b>	<b>927 SQFT.</b>

Note: 1. All room dimensions are in imperial and measured to structural elements and exclude wall finishes and construction tolerances. 2. All dimensions have been provided by our consultant Architect. 3. All materials, dimensions & drawings are approximate, information subject to change without notice. 4. Actual size may vary from the stated area. Drawings not to scale E&EO. The developer reserves the right to make revisions. 5. Calculation of suite is measured as the area bounded by the centre line of demising or party walls separating one unit from another unit, the exterior surface of all exterior walls, and the exterior surface of the corridor wall enclosing and abutting the unit. 6. Calculation of balcony area is measured as the area bounded by the centre lines of demising or party walls separating one unit from another unit, the outermost face of the enclosing guard and external face of the site abutting the balcony. 7. The units are measured at level 15 in the building. Columns above this level may reduce in size, while floors below may increase in size.

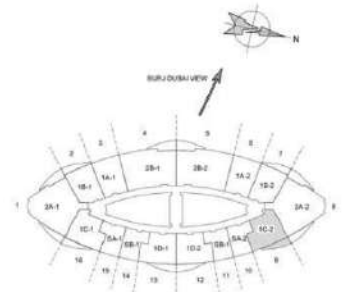
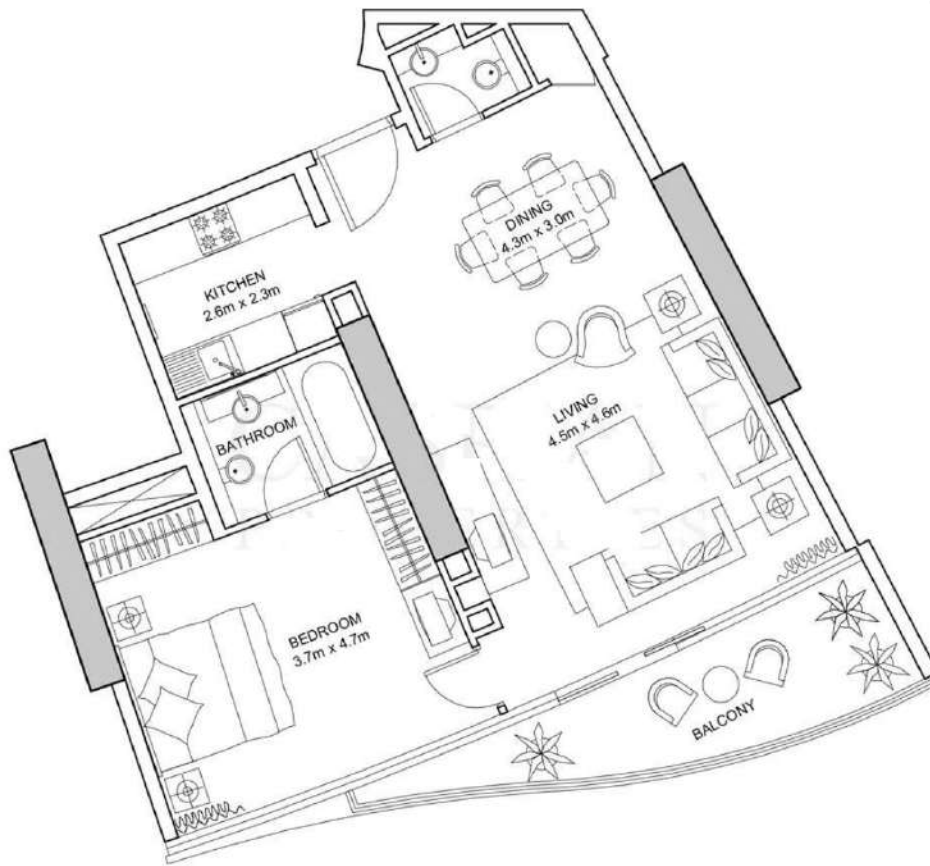


**1 Bedroom Apartment** (FLOORS 15-47)

**Unit 1D-1**

Apartment Area	74.89 SQM.	806 SQFT.
Balcony Area	11.25 SQM.	121 SQFT.
<b>Total Area</b>	<b>86.14 SQM.</b>	<b>927 SQFT.</b>

Note: 1. All room dimensions are in imperial and measured to structural elements and exclude wall finishes and construction tolerances. 2. All dimensions have been provided by our consultant Architect. 3. All materials, dimensions & drawings are approximate. Information subject to change without notice. 4. Actual size may vary from the stated area. Drawings not to scale E&EO. The developer reserves the right to make revisions. 5. Calculation of suite is measured as the area bounded by the centre line of demising or party walls separating one unit from another unit, the exterior surface of all exterior walls, and the exterior surface of the corridor wall enclosing and abutting the unit. 6. Calculation of balcony area is measured as the area bounded by the centre lines of demising or party walls separating one unit from another unit, the outermost face of the enclosing guard and external face of the site abutting the balcony. 7. The units are measured at level 15 in the building. Columns above this level may reduce in size, while floors below may increase in size.

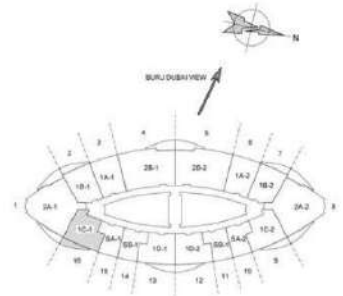
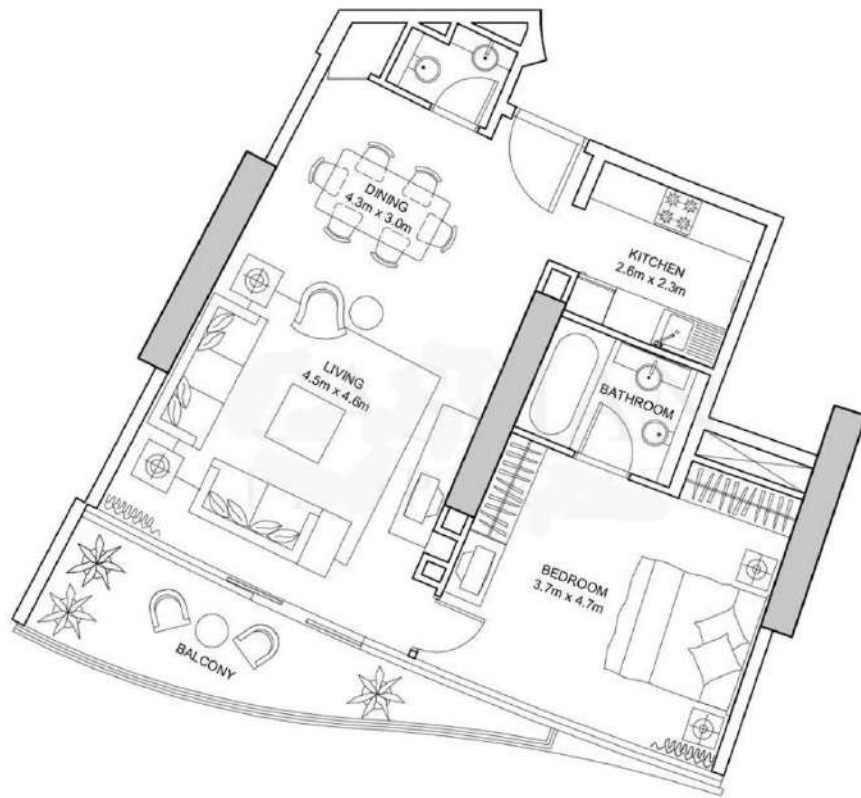


**1 Bedroom Apartment (FLOORS 15-47)**

**Unit 1C-2**

Apartment Area	75.97 SQM.	818 SQFT.
Balcony Area	10.90 SQM.	117 SQFT.
<b>Total Area</b>	<b>86.87 SQM.</b>	<b>935 SQFT.</b>

Note: 1. All room dimensions are in imperial and measured to structural elements and exclude wall finishes and construction tolerances. 2. All dimensions have been provided by our consultant Architect. 3. All materials, dimensions & drawings are approximate. Information subject to change without notice. 4. Actual size may vary from the stated area. Drawings not to scale E&EO. The developer reserves the right to make revisions. 5. Calculation of suite is measured as the area bounded by the centre line of demising or party walls separating one unit from another unit, the exterior surface of all exterior walls, and the exterior surface of the corridor wall enclosing and abutting the unit. 6. Calculation of balcony area is measured as the area bounded by the centre lines of demising or party walls separating one unit from another unit, the outermost face of the enclosing guard and external face of the site abutting the balcony. 7. The units are measured at level 15 in the building. Columns above this level may reduce in size, while floors below may increase in size.



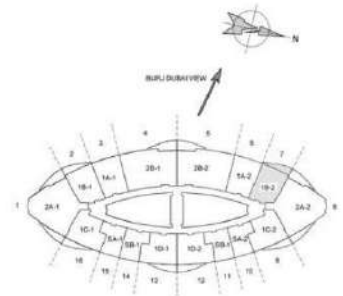
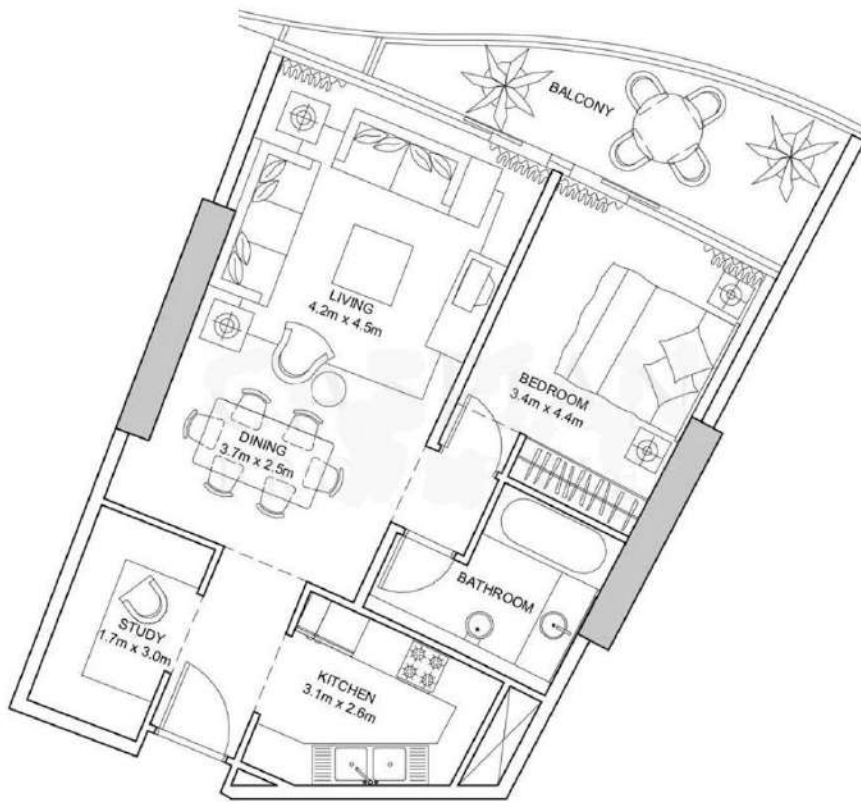
**1 Bedroom Apartment (FLOORS 15-47)**

**Unit 1C-1**

Apartment Area	75.97 SQM.	818 SQFT.
Balcony Area	10.90 SQM.	117 SQFT.
<b>Total Area</b>	<b>86.87 SQM.</b>	<b>935 SQFT.</b>

Note: 1. All room dimensions are in imperial and measured to structural elements and exclude wall finishes and construction tolerances. 2. All dimensions have been provided by our consultant Architect. 3. All materials, dimensions & drawings are approximate. Information subject to change without notice. 4. Actual size may vary from the stated area. Drawings not to scale E&EO. The developer reserves the right to make revisions. 5. Calculation of suite is measured as the area bounded by the centre line of demising or party walls separating one unit from another unit, the exterior surface of all exterior walls, and the exterior surface of the corridor wall enclosing and abutting the unit. 6. Calculation of balcony area is measured as the area bounded by the centre lines of demising or party walls separating one unit from another unit, the outermost face of the enclosing guard and external face of the site abutting the balcony. 7. The units are measured at level 15 in the building. Columns above this level may reduce in size, while floors below may increase in size.



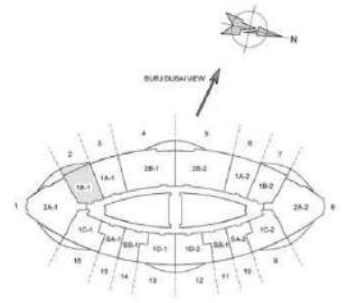
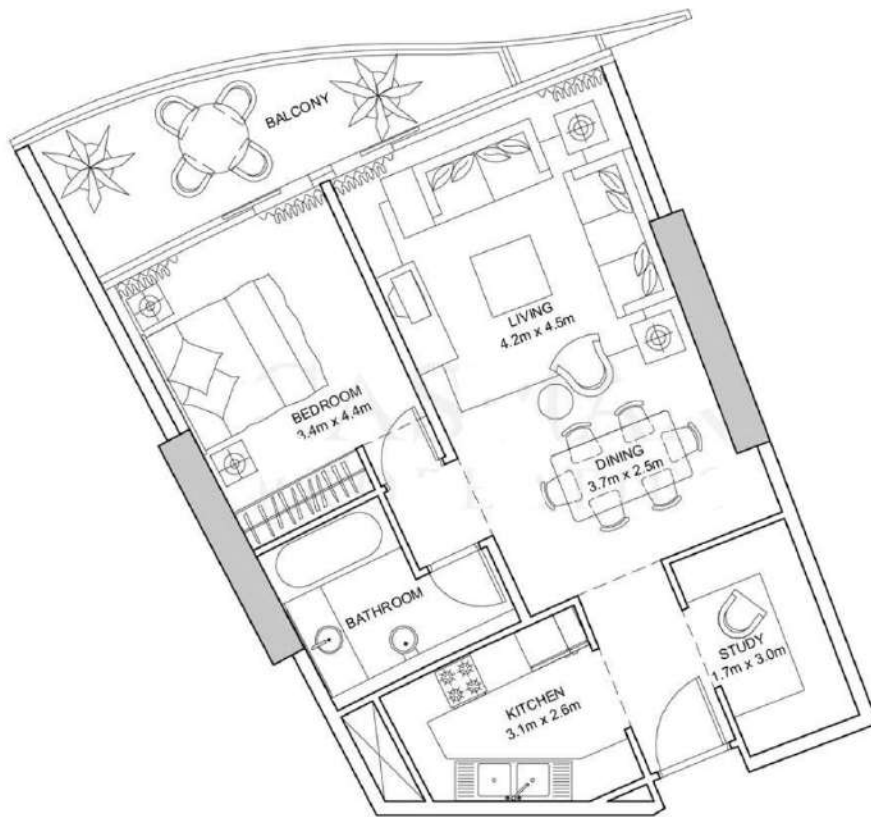


**1 Bedroom Apartment (FLOORS 15-17)**

**Unit 1B-2**

Apartment Area	70.93 SQM.	763 SQFT.
Balcony Area	10.90 SQM.	117 SQFT.
<b>Total Area</b>	<b>81.83 SQM.</b>	<b>880 SQFT.</b>

Note: 1. All room dimensions are in imperial and measured to structural elements and exclude wall finishes and construction tolerances. 2. All dimensions have been provided by our consultant Architect. 3. All materials, dimensions & drawings are approximate. Information subject to change without notice. 4. Actual size may vary from the stated area. Drawings not to scale E&EO. The developer reserves the right to make revisions. 5. Calculation of suite is measured as the area bounded by the centre line of demising or party walls separating one unit from another unit, the exterior surface of all exterior walls, and the exterior surface of the corridor wall enclosing and abutting the unit. 6. Calculation of balcony area is measured as the area bounded by the centre lines of demising or party walls separating one unit from another unit, the outermost face of the enclosing guard and external face of the site abutting the balcony. 7. The units are measured at level 15 in the building. Columns above this level may reduce in size, while floors below may increase in size.

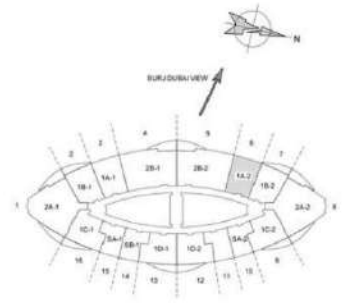
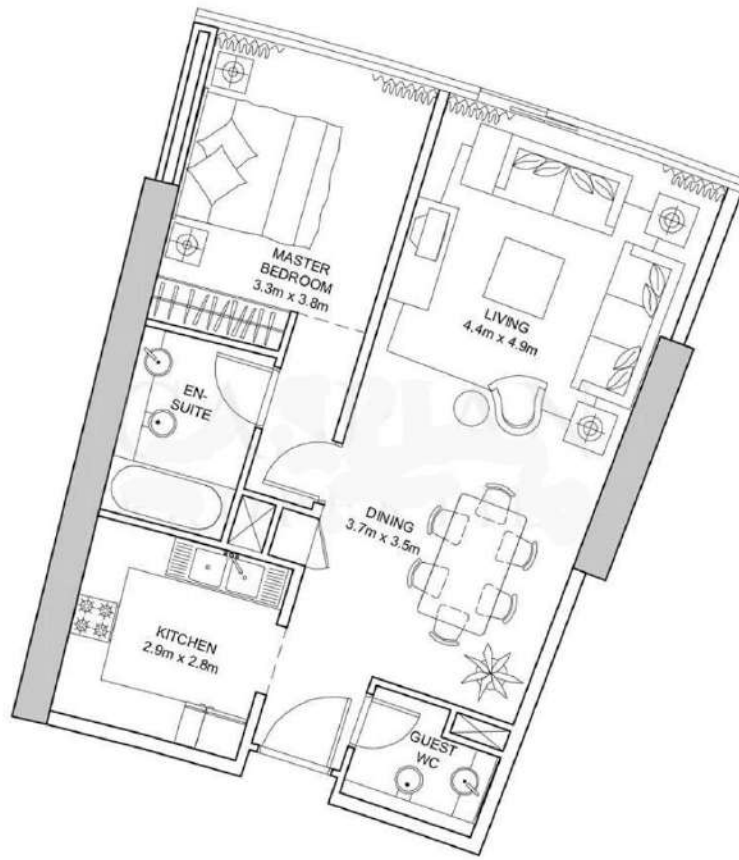


**1 Bedroom Apartment (FLOORS 15-17)**

**Unit 1B-1**

Apartment Area	70.93 SQM.	763 SQFT.
Balcony Area	10.90 SQM.	117 SQFT.
<b>Total Area</b>	<b>81.83 SQM.</b>	<b>880 SQFT.</b>

Note: 1. All room dimensions are in imperial and measured to structural elements and exclude wall finishes and construction tolerances. 2. All dimensions have been provided by our consultant Architect. 3. All materials, dimensions & drawings are approximate. Information subject to change without notice. 4. Actual size may vary from the stated area. Drawings not to scale E&O. The developer reserves the right to make revisions. 5. Calculation of suite is measured as the area bounded by the centre line of demising or party walls separating one unit from another unit, the exterior surface of all exterior walls, and the exterior surface of the corridor wall enclosing and abutting the unit. 6. Calculation of balcony area is measured as the area bounded by the centre lines of demising or party walls separating one unit from another unit, the outermost face of the enclosing guard and external face of the site abutting the balcony. 7. The units are measured at level 15 in the building. Columns above this level may reduce in size, while floors below may increase in size.

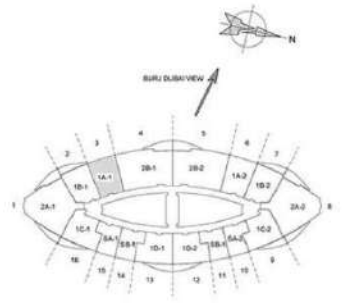
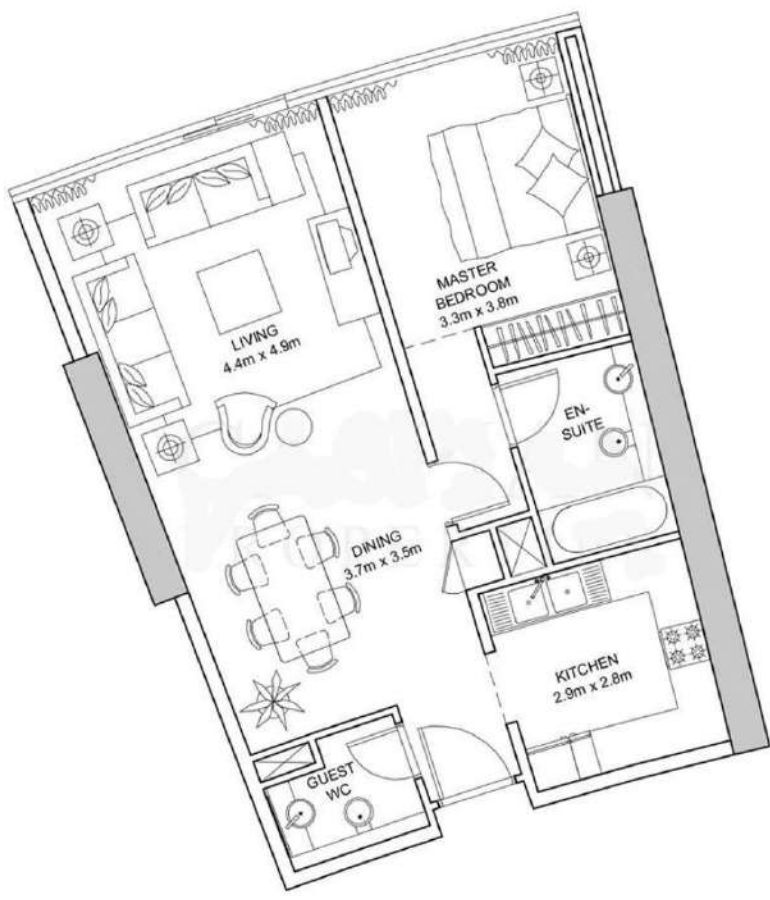


Note: 1. All room dimensions are in imperial and measured to structural elements and exclude wall finishes and construction tolerances. 2. All dimensions have been provided by our consultant Architect. 3. All materials, dimensions & drawings are approximate. Information subject to change without notice. 4. Actual size may vary from the stated area. Drawings not to scale E&EO. The developer reserves the right to make revisions. 5. Calculation of suite is measured as the area bounded by the centre line of demising or party walls separating one unit from another unit, the exterior surface of all exterior walls, and the exterior surface of the corridor wall enclosing and abutting the unit. 6. Calculation of balcony area is measured as the area bounded by the centre lines of demising or party walls separating one unit from another unit, the outermost face of the enclosing guard and external face of the site abutting the balcony. 7. The units are measured at level 15 in the building. Columns above this level may reduce in size, while floors below may increase in size.

**1 Bedroom Apartment** (FLOORS 15-17)

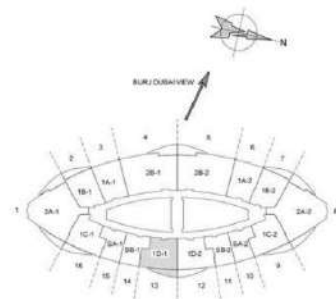
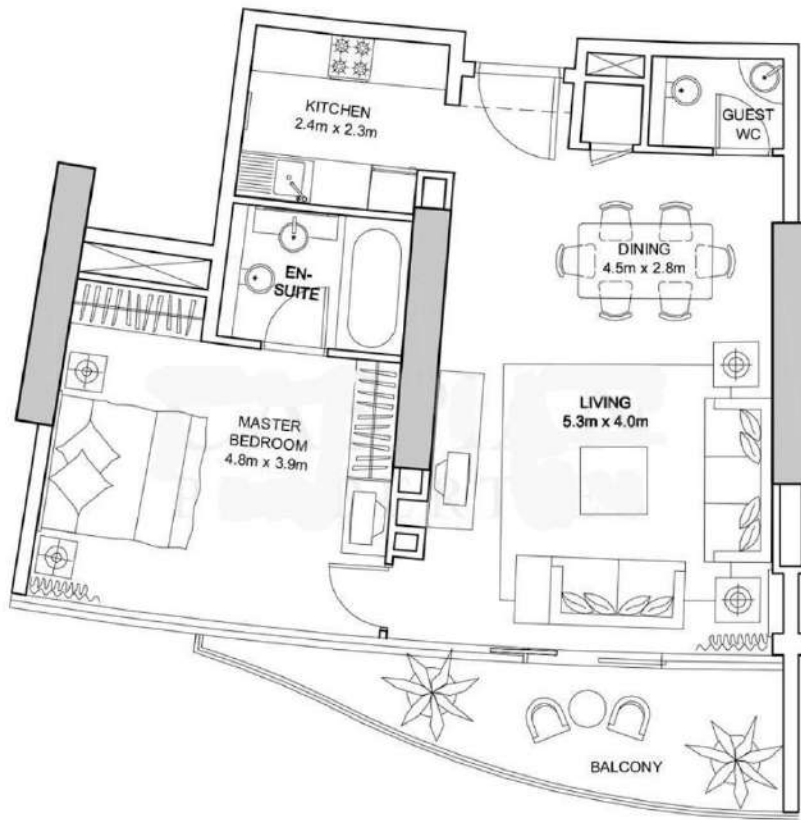
**Unit 1A-2**

Apartment Area	73.94 SQM.	796 SQFT.
<b>Total Area</b>	<b>73.94 SQM.</b>	<b>796 SQFT.</b>



Note: 1. All room dimensions are in imperial and measured to structural elements and exclude wall finishes and construction tolerances. 2. All dimensions have been provided by our consultant Architect. 3. All materials, dimensions & drawings are approximate. Information subject to change without notice. 4. Actual size may vary from the stated area. Drawings not to scale E&EO. The developer reserves the right to make revisions. 5. Calculation of suite is measured as the area bounded by the centre line of demising or party walls separating one unit from another unit, the exterior surface of all exterior walls, and the exterior surface of the corridor wall enclosing and abutting the unit. 6. Calculation of balcony area is measured as the area bounded by the centre lines of demising or party walls separating one unit from another unit, the outermost face of the enclosing guard and external face of the site abutting the balcony. 7. The units are measured at level 15 in the building. Columns above this level may reduce in size, while floors below may increase in size.

<b>1 Bedroom Apartment (FLOORS 15-47)</b>		
<b>Unit 1A-1</b>		
Apartment Area	73.94 SQM.	796 SQFT.
<b>Total Area</b>	<b>73.94 SQM.</b>	<b>796 SQFT.</b>



**1 Bedroom Apartment** (FLOORS 15-47)

**Unit 1D-1**

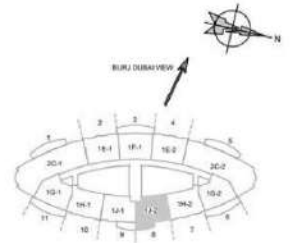
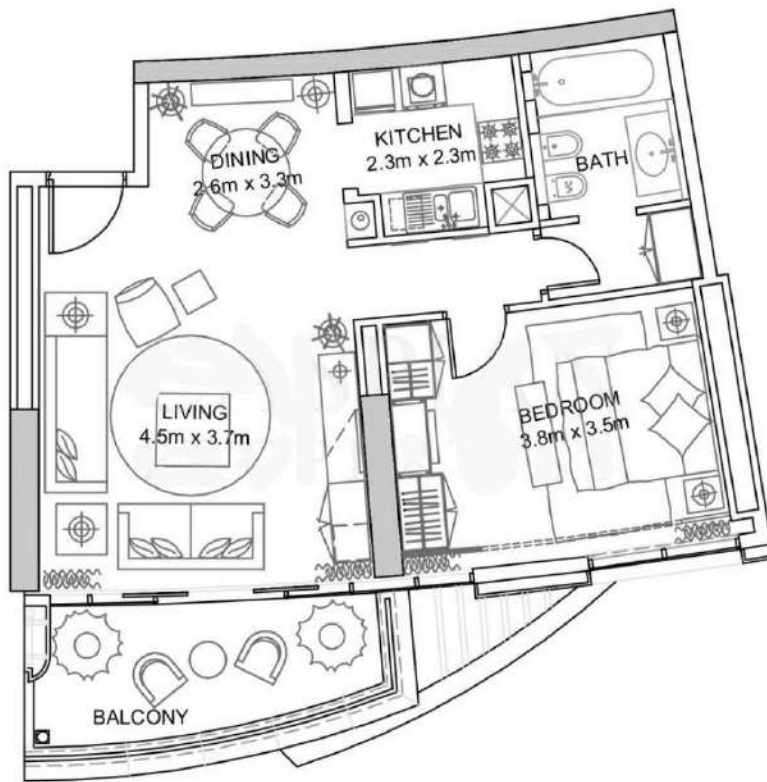
Apartment Area	74.89 SQM.	806 SQFT.
Balcony Area	11.25 SQM.	121 SQFT.
<b>Total Area</b>	<b>86.14 SQM.</b>	<b>927 SQFT.</b>

Note: 1. All room dimensions are in imperial and measured to structural elements and exclude wall finishes and construction tolerances. 2. All dimensions have been provided by our consultant Architect. 3. All materials, dimensions & drawings are approximate. Information subject to change without notice. 4. Actual size may vary from the stated area. Drawings not to scale E&EO. The developer reserves the right to make revisions. 5. Calculation of suite is measured as the area bounded by the centre line of demising or party walls separating one unit from another unit, the exterior surface of all exterior walls, and the exterior surface of the corridor wall enclosing and abutting the unit. 6. Calculation of balcony area is measured as the area bounded by the centre lines of demising or party walls separating one unit from another unit, the outermost face of the enclosing guard and external face of the site abutting the balcony. 7. The units are measured at level 15 in the building. Columns above this level may reduce in size, while floors below may increase in size.

BURJ DUBAI

**BURJ DUBAI LAKE HOTEL**

NOVEMBER 2004 - AS PER EMAAR'S ORACLE SYSTEM

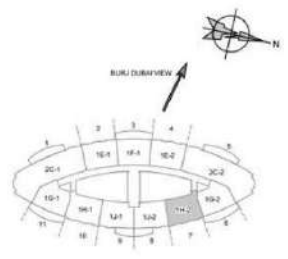
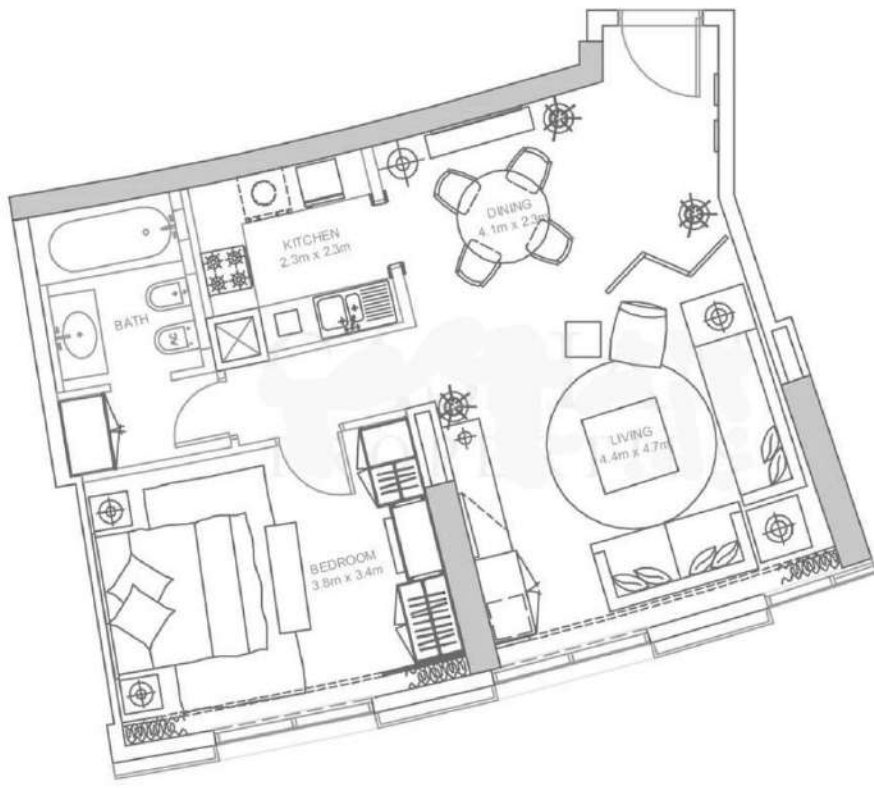


**1 Bedroom Apartment (FLOORS 49-56)**

**Unit 1J-2**

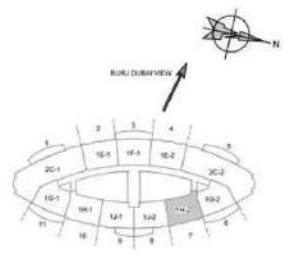
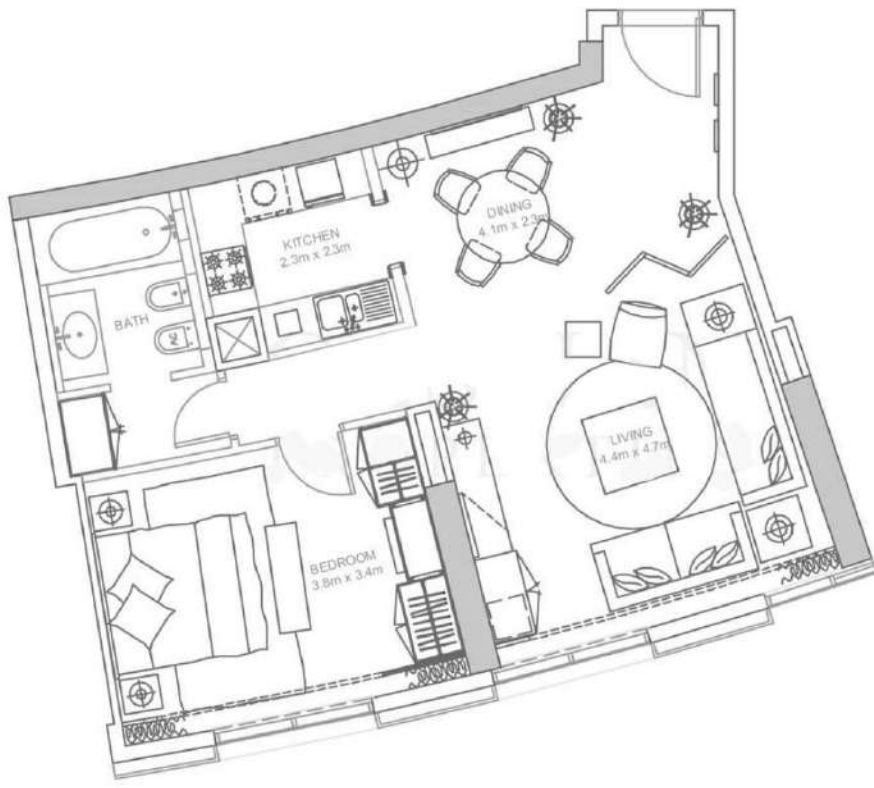
Apartment Area	66.42 SQM.	715 SQFT.
Balcony Area	10.03 SQM.	108 SQFT.
<b>Total Area</b>	<b>76.45 SQM.</b>	<b>823 SQFT.</b>

Note: 1. All room dimensions are in imperial and measured to structural elements and exclude wall finishes and construction tolerances. 2. All dimensions have been provided by our consultant Architect. 3. All materials, dimensions & drawings are approximate. Information subject to change without notice. 4. Actual size may vary from the stated area. Drawings not to scale E&EO. The developer reserves the right to make revisions. 5. Calculation of suite is measured as the area bounded by the centre line of demising or party walls separating one unit from another unit, the exterior surface of all exterior walls, and the exterior surface of the corridor wall enclosing and abutting the unit. 6. Calculation of balcony area is measured as the area bounded by the centre lines of demising or party walls separating one unit from another unit, the outermost face of the enclosing guard and external face of the site abutting the balcony. 7. The units are measured at level 49 in the building. Columns above this level may reduce in size, while floors below may increase in size.



<b>1 Bedroom Apartment</b> (FLOORS 49-56)		
<b>Unit 1H-2</b>		
Apartment Area	68.84 SQM.	741 SQFT.
<b>Total Area</b>	<b>68.84 SQM.</b>	<b>741 SQFT.</b>

Note: 1. All room dimensions are in imperial and measured to structural elements and exclude wall finishes and construction tolerances. 2. All dimensions have been provided by our consultant Architect. 3. All materials, dimensions & drawings are approximate. Information subject to change without notice. 4. Actual size may vary from the stated area. Drawings not to scale E&EO. The developer reserves the right to make revisions. 5. Calculation of suite is measured as the area bounded by the centre line of demising or party walls separating one unit from another unit, the exterior surface of all exterior walls, and the exterior surface of the corridor wall enclosing and abutting the unit. 6. Calculation of balcony area is measured as the area bounded by the centre lines of demising or party walls separating one unit from another unit, the outermost face of the enclosing guard and external face of the site abutting the balcony. 7. The units are measured at level 49 in the building. Columns above this level may reduce in size, while floors below may increase in size.



**1 Bedroom Apartment** (FLOORS 49-56)

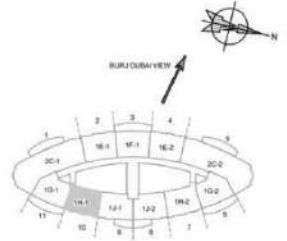
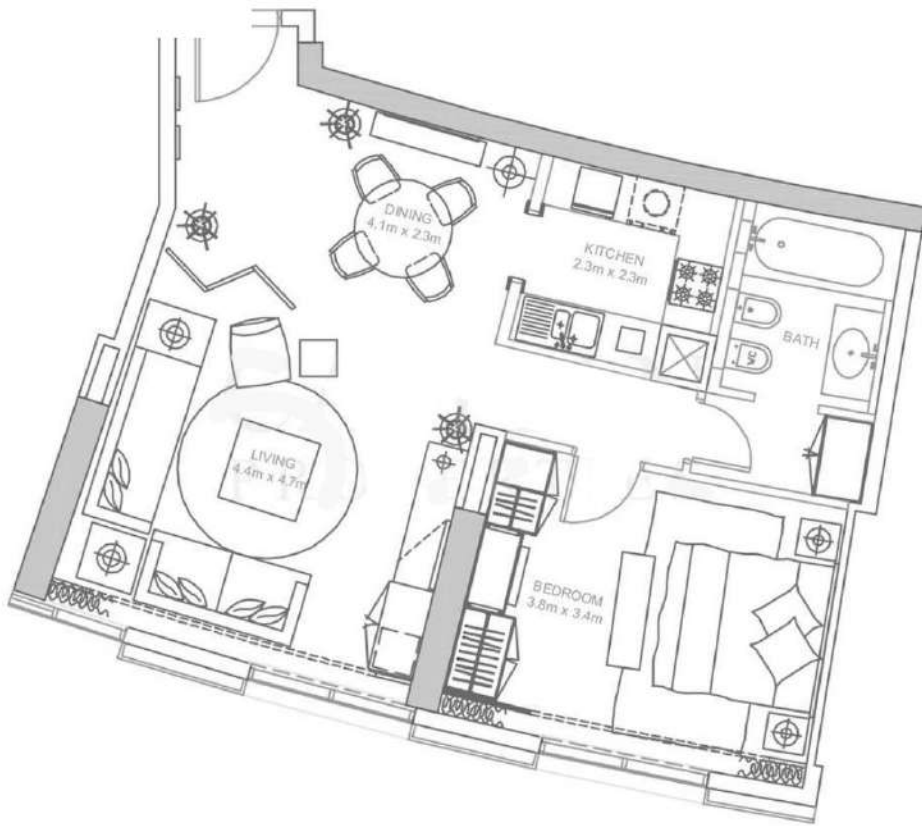
**Unit 1H-2**

Apartment Area	68.84 SQM.	741 SQFT.
----------------	------------	-----------

<b>Total Area</b>	<b>68.84 SQM.</b>	<b>741 SQFT.</b>
-------------------	-------------------	------------------

Note: 1. All room dimensions are in imperial and measured to structural elements and exclude wall finishes and construction tolerances. 2. All dimensions have been provided by our consultant Architect. 3. All materials, dimensions & drawings are approximate. Information subject to change without notice. 4. Actual size may vary from the stated area. Drawings not to scale E&EO. The developer reserves the right to make revisions. 5. Calculation of suite is measured as the area bounded by the centre line of demising or party walls separating one unit from another unit, the exterior surface of all exterior walls, and the exterior surface of the corridor wall enclosing and abutting the unit. 6. Calculation of balcony area is measured as the area bounded by the centre lines of demising or party walls separating one unit from another unit, the outermost face of the enclosing guard and external face of the site abutting the balcony. 7. The units are measured at level 49 in the building. Columns above this level may reduce in size, while floors below may increase in size.



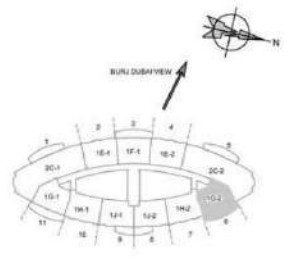
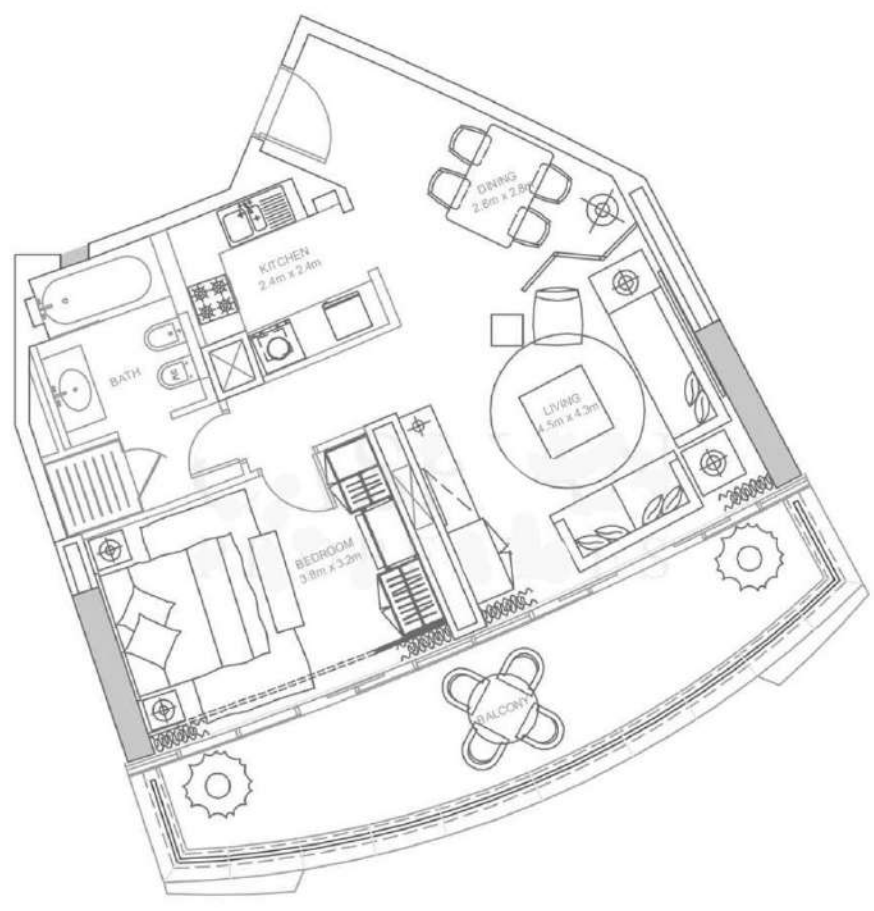


**1 Bedroom Apartment (FLOORS 49-56)**

**Unit 1H-1**

Apartment Area	68.84 SQM.	741 SQFT.
<b>Total Area</b>	<b>68.84 SQM.</b>	<b>741 SQFT.</b>

Note: 1. All room dimensions are in imperial and measured to structural elements and exclude wall finishes and construction tolerances. 2. All dimensions have been provided by our consultant Architect. 3. All materials, dimensions & drawings are approximate. Information subject to change without notice. 4. Actual size may vary from the stated area. Drawings not to scale E&EO. The developer reserves the right to make revisions. 5. Calculation of suite is measured as the area bounded by the centre line of demising or party walls separating one unit from another unit, the exterior surface of all exterior walls, and the exterior surface of the corridor wall enclosing and abutting the unit. 6. Calculation of balcony area is measured as the area bounded by the centre lines of demising or party walls separating one unit from another unit, the outermost face of the enclosing guard and external face of the site abutting the balcony. 7. The units are measured at level 49 in the building. Columns above this level may reduce in size, while floors below may increase in size.



**1 Bedroom Apartment (FLOORS 49-50)**

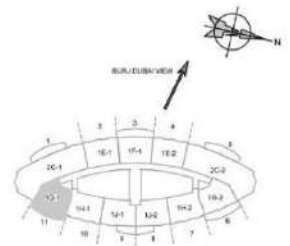
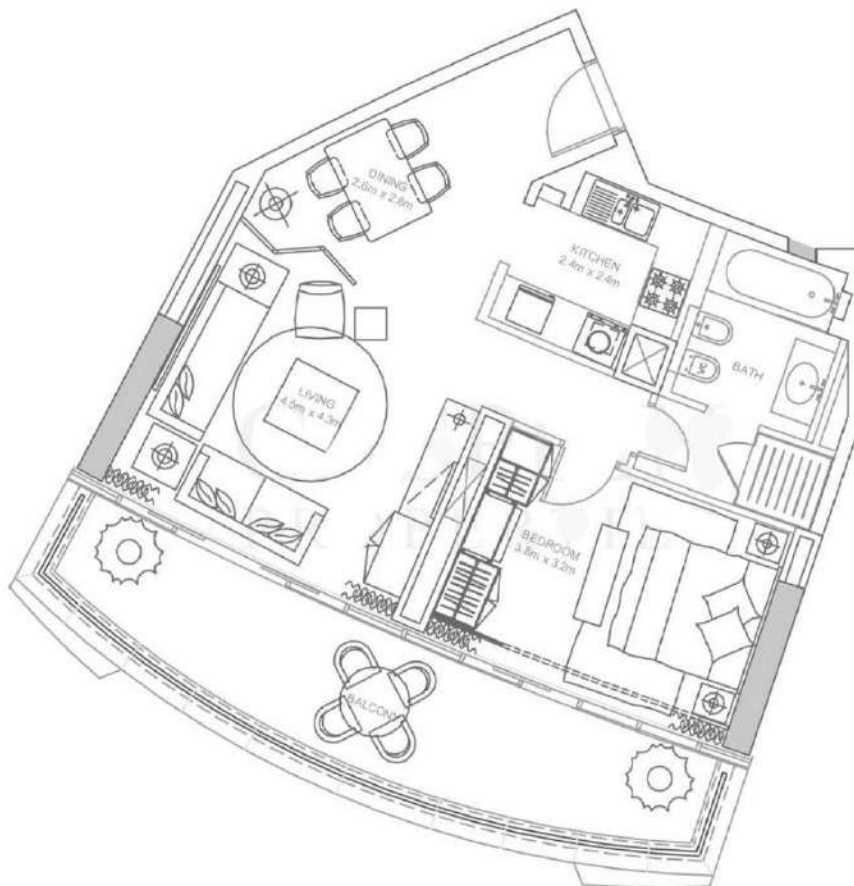
**Unit 1G-2**

Apartment Area	69.02 SQM.	743 SQFT.
Balcony Area	20.06 SQM.	216 SQFT.
<b>Total Area</b>	<b>89.08 SQM.</b>	<b>959 SQFT.</b>

Note: 1. All room dimensions are in imperial and measured to structural elements and exclude wall finishes and construction tolerances. 2. All dimensions have been provided by our consultant Architect. 3. All materials, dimensions & drawings are approximate. Information subject to change without notice. 4. Actual size may vary from the stated area. Drawings not to scale E&EO. The developer reserves the right to make revisions. 5. Calculation of suite is measured as the area bounded by the centre line of demising or party walls separating one unit from another unit, the exterior surface of all exterior walls, and the exterior surface of the corridor wall enclosing and abutting the unit. 6. Calculation of balcony area is measured as the area bounded by the centre lines of demising or party walls separating one unit from another unit, the outermost face of the enclosing guard and external face of the site abutting the balcony. 7. The units are measured at level 49 in the building. Columns above this level may reduce in size, while floors below may increase in size.

BURJ DUBAI  
**BURJ DUBAI LAKE HOTEL**

NOVEMBER 2004 - AS PER EMMA'S ORACLE SYSTEM



**1 Bedroom Apartment** (FLOORS 49-50)

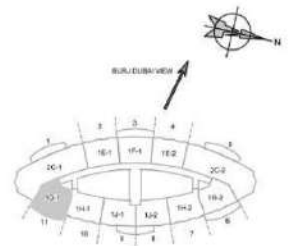
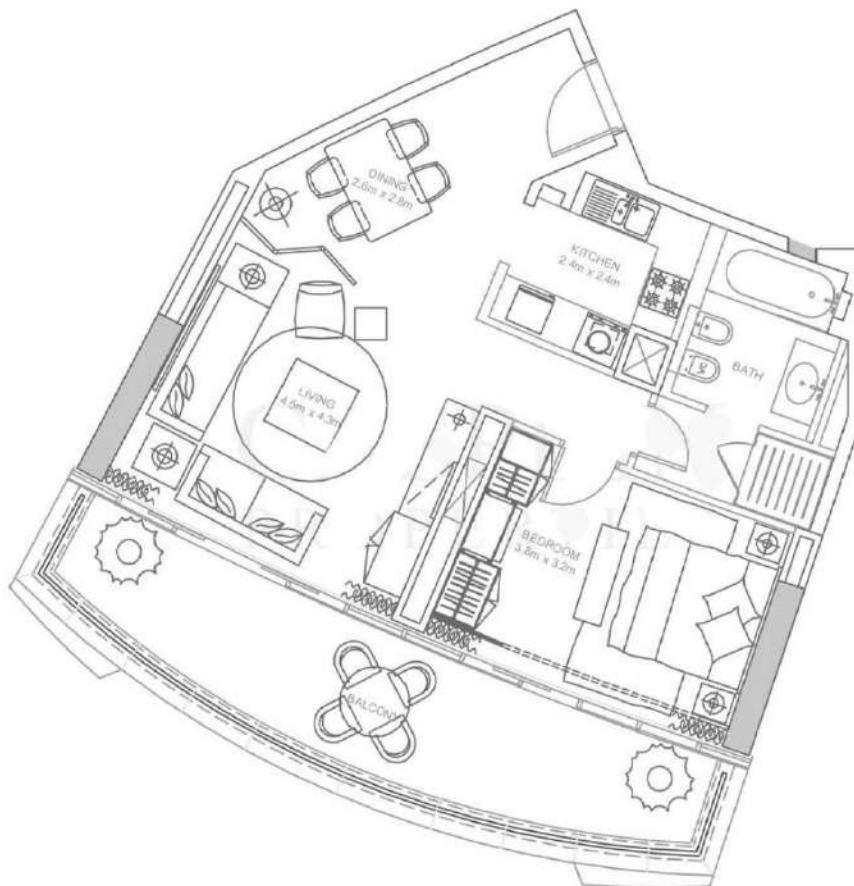
**Unit 1G-1**

Apartment Area	69.02 SQM.	743 SQFT.
Balcony Area	20.06 SQM.	216 SQFT.
<b>Total Area</b>	<b>89.08 SQM.</b>	<b>959 SQFT.</b>

Note: 1. All room dimensions are in imperial and measured to structural elements and exclude wall finishes and construction tolerances. 2. All dimensions have been provided by our consultant Architect. 3. All materials, dimensions & drawings are approximate. Information subject to change without notice. 4. Actual size may vary from the stated area. Drawings not to scale E&EO. The developer reserves the right to make revisions. 5. Calculation of suite is measured as the area bounded by the centre line of demising or party walls separating one unit from another unit, the exterior surface of all exterior walls, and the exterior surface of the corridor wall enclosing and abutting the unit. 6. Calculation of balcony area is measured as the area bounded by the centre lines of demising or party walls separating one unit from another unit, the outermost face of the enclosing guard and external face of the site abutting the balcony. 7. The units are measured at level 49 in the building. Columns above this level may reduce in size, while floors below may increase in size.

BURJ DUBAI  
**BURJ DUBAI LAKE HOTEL**

NOVEMBER 2004 - AS PER EMMA'S ORACLE SYSTEM



**1 Bedroom Apartment** (FLOORS 49-50)

**Unit 1G-1**

Apartment Area	69.02 SQM.	743 SQFT.
Balcony Area	20.06 SQM.	216 SQFT.
<b>Total Area</b>	<b>89.08 SQM.</b>	<b>959 SQFT.</b>

Note: 1. All room dimensions are in imperial and measured to structural elements and exclude wall finishes and construction tolerances. 2. All dimensions have been provided by our consultant Architect. 3. All materials, dimensions & drawings are approximate. Information subject to change without notice. 4. Actual size may vary from the stated area. Drawings not to scale E&EO. The developer reserves the right to make revisions. 5. Calculation of suite is measured as the area bounded by the centre line of demising or party walls separating one unit from another unit, the exterior surface of all exterior walls, and the exterior surface of the corridor wall enclosing and abutting the unit. 6. Calculation of balcony area is measured as the area bounded by the centre lines of demising or party walls separating one unit from another unit, the outermost face of the enclosing guard and external face of the site abutting the balcony. 7. The units are measured at level 49 in the building. Columns above this level may reduce in size, while floors below may increase in size.