

The Address Downtown Hotel Apartment



EMAAR

Welcome to 'Where Life Happens'

From plush rooms to the majestic views of the Burj Khalifa, you will find that there is quite simply no place that compares to Address Downtown.



Excellent Location

Views from the units include:

Views of Downtown
Dubai Mall
the Burj Khalifa
Business Bay



Luxurious Apartments

With its thriving and lively atmosphere, is a testament to those who relish the finer aspects of living, showcasing the epitome of glitz and glamour. As a sought-after neighborhood in Dubai, it entices expatriates due to its multicultural ambiance, providing world-class amenities, modern attractions, and enticing lifestyle privileges.

Amenities:

- Walk-In Closet
- High floor
- Storage Room
- Basement
- Kitchen Appliances
- Laundry Room
- Waterfront View
- Vastu-compliant
- Built In Wardrobes
- Gym
- Steam and sauna
- Available Networked
- Landmark view
- CCTV cameras
- Central A/C
- Dining in building

Features



Bedrooms



Fully Furnished



Parking



Cooling



Bathroom



Mail Box



Pool



View

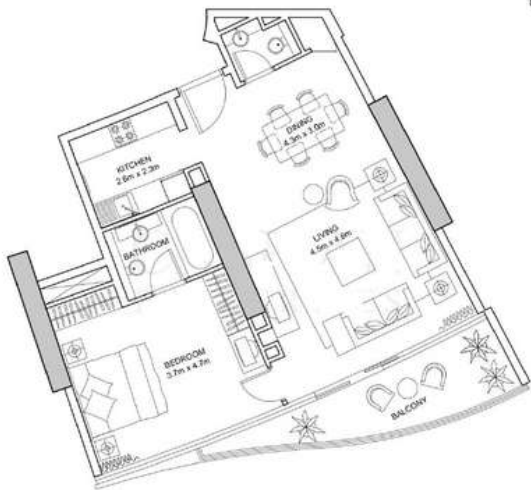


Private Gym

Floor Plans

1 Bedroom 09 Series

BURJ DUBAI
BURJ DUBAI LAKE HOTEL
NOVEMBER 2011 - 42 WEEKS (MARKET OFFER)



1 Bedroom Apartment 11000H 11419

Unit 1C-2

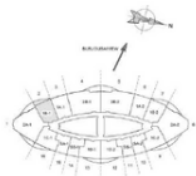
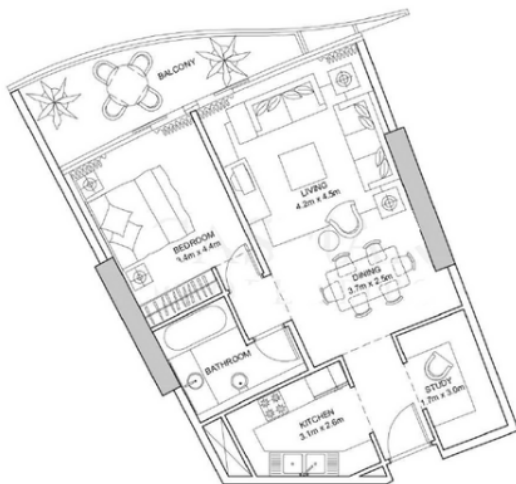
Apartment Area	75.97 SQM	818 SQFT
Balcony Area	10.80 SQM	117 SQFT
Total Area	86.77 SQM	935 SQFT

Notes: 1. All room dimensions are in meters and measure to structural elements and include wall thickness and circulation to bedrooms. 2. All dimensions have been provided by our consultant Architect. 3. All materials, dimensions and drawings are representative information subject to change without notice. 4. Actual site may vary from the general area. Drawing not to scale 1:500. The developer reserves the right to make changes. 5. Calculation of cubic volume is based on the area enclosed by the center line of opening or party walls separating one unit from another unit. The exterior surface of all exterior walls, and the volume surface of the corridor and landing, and stairs are not included. 6. Calculation of floor area is measured on the area bounded by the center line of opening or party walls separating one unit from another unit. The maximum floor of the building and the exterior base of the structure are included in this floor area. 7. The units are measured at level 11 in the building. Columns above this level may reduce in size. White lines indicate may reduce in size.

Floor Plans

1 Bedroom 02 Series

BURJ DUBAI
BURJ DUBAI LAKE HOTEL
RESIDENTS ONLY - ALL RESIDENTS MUST REGISTER



1 Bedroom Apartment (10069 15-17)

Unit 1B-1

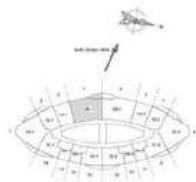
Apartment Area	70.93 SQM.	763 SQFT.
Balcony Area	10.90 SQM.	117 SQFT.
Total Area	81.83 SQM	880 SQFT.

All room dimensions are in Imperial and measured to structural elements and exclude wall thickness and construction tolerances. 2. All dimensions have been provided by our consultant Architect. 3. All exterior dimensions are approximate. Information subject to change without notice. 4. Actual size may vary from the stated area. Drawings not to scale (M2). The Developer reserves the right to make changes. 5. Calculation of where 1/2 as the area bounded by the centre line of driveway or party walls separating one unit from another unit, the exterior surface of all exterior walls, and the interior surface of the corridor and enclosing and abutting the unit, portion of balcony area is included in the area bounded by the centre line of driveway or party walls separating one unit from another unit, the bottom face of the enclosing guard and external face of the site cladding way. 7. The units are enclosed at least 1.5 metre building. Columns above this level are shown in view, while floor below may not be shown.

Floor Plans

2 Bedroom 04 Series

BURJ DUBAI
BURJ DUBAI LAKE HOTEL
NUMBER 104 AL FAYYANAH CORRIDOR



2 Bedroom Apartment 21008 1542

Unit 28-1

Apartment Area	145.82 SQM	1567 SQFT
Balcony Area	15.37 SQM	165 SQFT

Total Area	160.99 SQM	1732 SQFT
------------	------------	-----------

All room dimensions are to be imposed and measured to structure/trimline, and include wall, bridle and construction tolerances. 2. All dimensions have been provided by an independent architect. 3. All materials, dimensions and specifications are subject to change without notice. 4. All units are to be built from the model area. Drawings are for visual E&O. The developer reserves the right to make revisions. 5. Calculation of total area is as the area bounded by the center line of demarcation or party wall measuring line and from another unit, the exterior surface of all exterior walls, and the interior surface of the common wall measuring and abutting the unit. 6. Balcony area is measured as the area bounded by the center line of demarcation or party wall separating one unit from another unit, the exterior face of the enclosing wall and the exterior face of the site abutting area. 7. The units are measured at level 15 in the building. Columns above the level may reduce in size while floor below may increase in size.