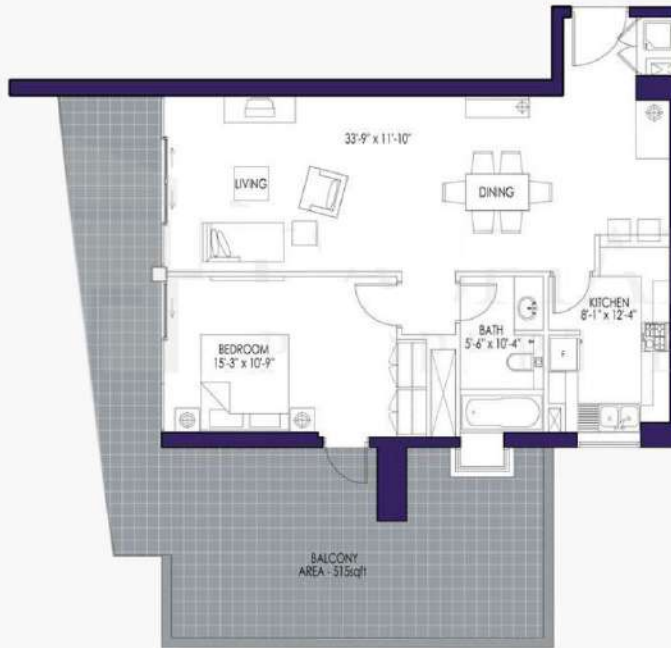


# Suite 10b



1 BEDROOM  
7th FLOOR  
ASPECT = WEST FACING

UNIT AREA: 856sqft  
BALCONY AREA: 51.5sqft  
TOTAL AREA: 1371sqft

- Notes:
- All room dimensions are reported and measured to structural elements and exclude wall finishes and construction tolerances.
  - All dimensions have been provided by consultant architects.
  - All materials, dimensions and drawings are approximate, information subject to change without notice.
  - Actual suite area may vary from listed area. Drawings not to scale B.M.O. The developer reserves the right to make revisions.
  - Calculation of suite area is measured as the area bounded by the center lines of demising or party walls separating one unit from another unit, the exterior walls, and the exterior surface of the corridor wall enclosing and abutting the unit.
  - Calculation of Balcony Area is measured as the area bounded by the center lines of demising or party walls separating one unit from another unit, the exterior face of the enclosing guard and the external face of the suite abutting the balcony.

# Suite 3



2 BEDROOM  
5th - 35th FLOOR  
ASPECT = NORTH EAST FACING

UNIT AREA: 1334sqft  
BALCONY AREA: 196sqft  
TOTAL AREA: 1530sqft

#### Notes:

- All room dimensions are imperial and measured to structural elements and exclude wall finishes and construction tolerances.
- All dimensions have been provided by consultant architects.
- All materials, dimensions and drawings are approximate, information subject to change without notice.
- Actual suite area may vary from stated area. Drawings not to scale (E&O). The developer reserves the right to make revisions.
- Calculation of suite area is measured as the area bounded by the center lines of demising or party walls separating one unit from another unit, the exterior walls, and the exterior surface of the corridor wall enclosing and abutting the unit.
- Calculation of Balcony Area is measured as the area bounded by the center lines of demising or party walls separating one unit from another unit, the outermost face of the enclosing guard and the external face of the suite abutting the balcony.

# Suite 1



2 BEDROOM  
5th - 35th FLOOR  
ASPECT = NORTH WEST FACING

UNIT AREA: 1290sqft  
BALCONY AREA: 344sqft  
TOTAL AREA: 1634sqft

- Notes:
- All room dimensions are imperial and measured to structural elements and exclude wall finishes and construction tolerances.
  - All dimensions have been provided by consultant architects.
  - All materials, dimensions and drawings are approximate. Information subject to change without notice.
  - Actual suite area may vary from stated area. Drawings not to scale 1:60. The developer reserves the right to make revisions.
  - Calculation of suite area is measured as the area bounded by the center lines of demising or party walls separating one unit from another unit, the exterior walls, and the exterior surface of the corridor wall enclosing and abutting the unit.
  - Calculation of Balcony Area is measured as the area bounded by the center lines of demising or party walls separating one unit from another unit, the outermost face of the enclosing guard and the external face of the suite abutting the balcony.

# Suite 2



2 BEDROOM + ROOM  
5th - 35th FLOOR  
ASPECT = NORTH FACING

UNIT AREA: 1408sqft  
BALCONY AREA: 318sqft  
TOTAL AREA: 1726sqft

#### Notes:

- All room dimensions are imperial and measured to structural elements and exclude wall finishes and construction tolerances.
- All dimensions have been provided by consultant architects.
- All materials, dimensions and drawings are approximate. Information subject to change without notice.
- Actual suite area may vary from stated area. Drawings not to scale E&EO. The Developer reserves the right to make revisions.
- Calculation of suite area is measured as the area bounded by the center lines of dooring or party walls separating one unit from another unit, the exterior walls, and the exterior surface of the corridor wall enclosing and abutting the unit.
- Calculation of Balcony Area is measured as the area bounded by the center lines of dooring or party walls separating one unit from another unit, the outermost face of the enclosing guard and the external face of the suite abutting the balcony.

# Suite 10c

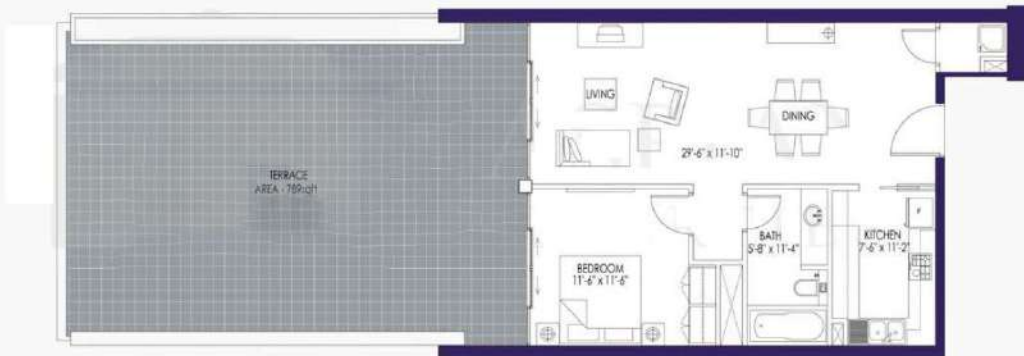


1 BEDROOM  
8th - 35th FLOOR  
ASPECT = WEST FACING

UNIT AREA: 856sqft  
BALCONY AREA: 207sqft  
TOTAL AREA: 1063sqft

- Notes:
- All room dimensions are imperial and measured to structural elements and exclude wall finishes and construction tolerances.
  - All dimensions have been provided by consultant architects.
  - All materials, dimensions and drawings are approximate. Information subject to change without notice.
  - Actual suite area may vary from stated area. Drawings not to scale EXIST. The developer reserves the right to make revisions.
  - Calculation of suite area is measured as the area bounded by the center lines of demising or party walls separating one unit from another unit, the exterior walls, and the exterior surface of the corridor wall enclosing and abutting the unit.
  - Calculation of Balcony Area is measured as the area bounded by the center lines of demising or party walls separating one unit from another unit, the outermost face of the enclosing guard and the external face of the suite abutting the balcony.

# Suite 11



1 BEDROOM  
4th FLOOR  
ASPECT = SOUTH EAST FACING

UNIT AREA: 770sqft  
BALCONY AREA: 789sqft  
TOTAL AREA: 1559sqft

Notes:

- All room dimensions are imperial and measured to structural elements and exclude wall finishes and construction tolerances.
- All dimensions have been provided by consultant architects.
- All materials, dimensions and drawings are approximate. Information subject to change without notice.
- Actual suite area may vary from stated area. Drawings not to scale B&O. The Developer reserves the right to make revisions.
- Calculation of suite area is measured as the area bounded by the center lines of demising or party walls separating one unit from another unit, the exterior walls, and the exterior surface of the corridor wall enclosing and abutting the unit.
- Calculation of Balcony Area is measured as the area bounded by the center lines of demising or party walls separating one unit from another unit, the outermost face of the enclosing guard and the external face of the wall abutting the balcony.

# Suite 11a



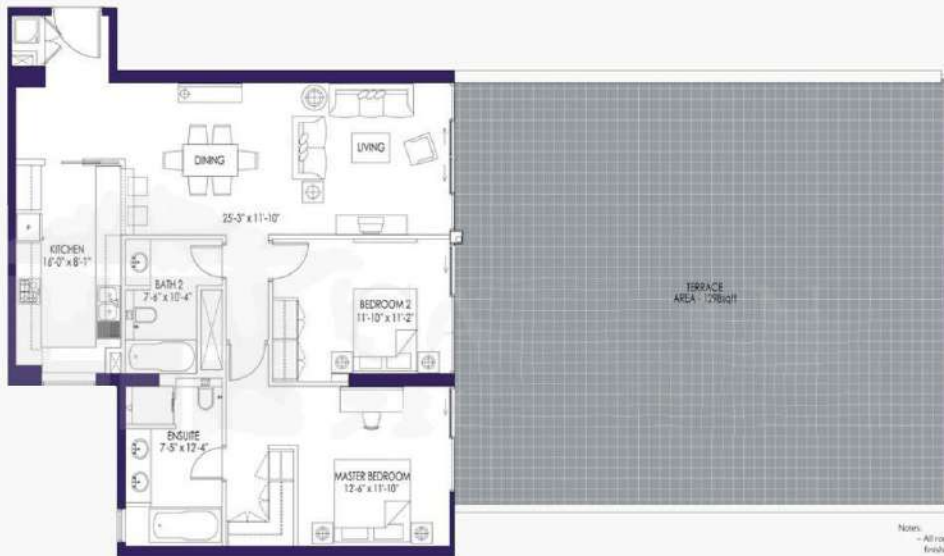
1 BEDROOM  
5th - 35th FLOOR  
ASPECT = NORTH WEST FACING

UNIT AREA: 770sqft  
BALCONY AREA: 117sqft  
TOTAL AREA: 887sqft

#### Notes:

- All room dimensions are imperial and measured to structural elements and exclude wall finishes and construction tolerances.
- All dimensions have been provided by consultant architects.
- All materials, dimensions and drawings are approximate. Information subject to change without notice.
- Actual suite area may vary from stated area. Drawings not to scale. ©BEO. The developer reserves the right to make revisions.
- Calculation of suite area is measured as the area bounded by the center lines of demising or party walls separating one unit from another unit, the exterior walls, and the exterior surface of the corridor wall enclosing and abutting the unit.
- Calculation of Balcony Area is measured as the area bounded by the center lines of demising or party walls separating one unit from another unit, the outermost face of the enclosing guard and the external face of the suite abutting the balcony.

# Suite 7



2 BEDROOM  
4th FLOOR  
ASPECT = SOUTH FACING

UNIT AREA: 1226sqft  
BALCONY AREA: 1298sqft  
TOTAL AREA: 2524sqft

**Notes:**

- All room dimensions are imperial and measured to structural elements and exclude wall finishes and construction tolerances.
- All dimensions have been provided by consultant architects.
- All materials, dimensions and drawings are approximate. Information subject to change without notice.
- Actual suite area may vary from stated area. Drawings not to scale & M&O. The developer reserves the right to make revisions.
- Calculation of suite area is measured as the area bounded by the center line of demising or party walls separating one unit from another unit, the exterior walls, and the exterior surface of the corridor wall enclosing and abutting the unit.
- Calculation of Balcony Area is measured as the area bounded by the center lines of demising or party walls separating one unit from another unit, the exterior face of the enclosing guard and the external face of the suite abutting the balcony.



# Suite 7a



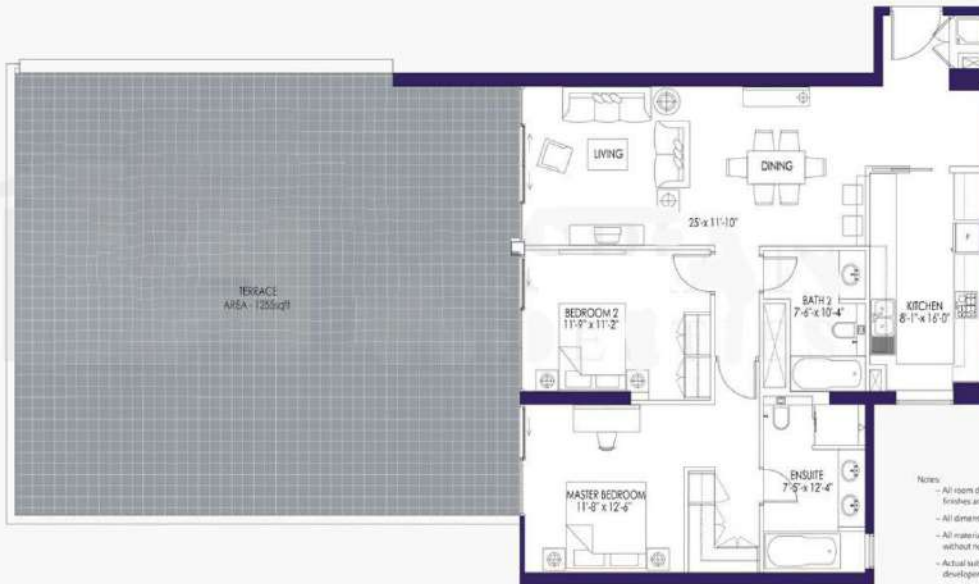
2 BEDROOM  
5th - 6th FLOOR  
ASPECT - SOUTH EAST FACING

UNIT AREA: 1226sqft  
BALCONY AREA: 173sqft  
TOTAL AREA: 1399sqft

**Notes**

- All room dimensions are imperial and measured to structural elements and exclude wall finishes and construction tolerances.
- All dimensions have been provided by consultant architects.
- All materials, dimensions and drawings are approximate. Information subject to change without notice.
- Actual suite area may vary from stated area. Drawings not to scale E&O. The Developer reserves the right to make revisions.
- Calculation of suite area is measured as the area bounded by the center lines of demising or party walls separating one unit from another unit, the exterior walls, and the exterior surface of the corridor wall enclosing and abutting the unit.
- Calculation of Balcony Area is measured as the area bounded by the center lines of demising or party walls separating one unit from another unit, the outermost face of the enclosing guard and the external face of the suite abutting the balcony.

# Suite 10

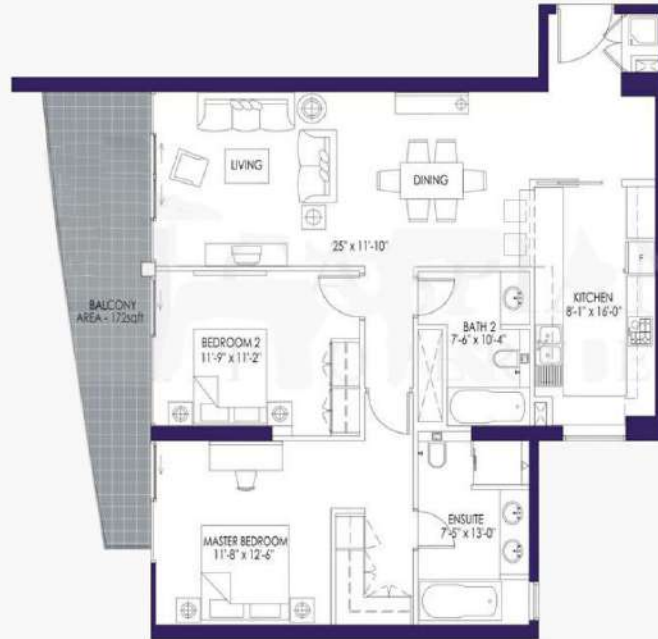


2 BEDROOM  
4th FLOOR  
ASPECT = WEST FACING

UNIT AREA: 1226sqft  
BALCONY AREA: 1255sqft  
TOTAL AREA: 2481sqft

- Notes:
- All room dimensions are imperial and measured to structural elements and exclude wall finishes and construction tolerances.
  - All dimensions have been provided by consultant architects.
  - All materials, dimensions and drawings are approximate. Information subject to change without notice.
  - Actual suite areas may vary from stated areas. Drawings not to scale E&O. The developer reserves the right to make revisions.
  - Calculation of suite area is measured as the area bounded by the center lines of doorway or party walls separating one unit from another unit, the exterior walls, and the exterior surface of the corridor wall enclosing and abutting the unit.
  - Calculation of Balcony Area is measured as the area bounded by the center lines of demising or party walls separating one unit from another unit, the outermost face of the enclosing glass and the external face of the suite abutting the balcony.

# Suite 10a

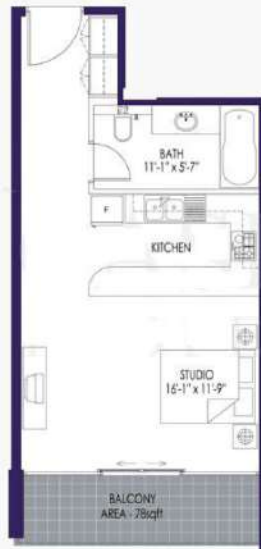


2 BEDROOM  
5th - 6th FLOOR  
ASPECT = WEST FACING

UNIT AREA: 1226sqft  
BALCONY AREA: 172sqft  
TOTAL AREA: 1398sqft

- Notes:
- All room dimensions are imperial and measured to structural elements and exclude wall finishes and construction tolerances.
  - All dimensions have been provided by consultant architects.
  - All materials, dimensions and drawings are approximate. Information subject to change without notice.
  - Actual suite area may vary from stated area. Drawings not to scale E&IO. The developer reserves the right to make revisions.
  - Calculation of suite area is measured as the area bounded by the center lines of demising or party walls separating one unit from another unit, the exterior walls, and the exterior surface of the corridor wall enclosing and abutting the unit.
  - Calculation of Balcony Area is measured as the area bounded by the center lines of demising or party walls separating one unit from another unit, the outermost face of the enclosing guard and the external face of the suite abutting the balcony.

# Suite 8



STUDIO  
4th - 35th FLOOR  
ASPECT = SOUTH WEST FACING

UNIT AREA: 465sqft  
BALCONY AREA: 78sqft  
TOTAL AREA: 543sqft

- Notes:
- All room dimensions are imperial and measured to structural elements and exclude wall finishes and construction tolerances.
  - All dimensions have been provided by consultant architects.
  - All materials, dimensions and drawings are approximate. Information subject to change without notice.
  - Actual suite area may vary from stated area. Drawings not to scale & E.O. The developer reserves the right to make revisions.
  - Calculation of suite area is measured as the area bounded by the center lines of demising or party walls separating one unit from another unit, the exterior walls, and the exterior surface of the corridor wall enclosing and abutting the unit.
  - Calculation of Balcony Area is measured as the area bounded by the center lines of demising or party walls separating one unit from another unit, the outermost face of the enclosing guard and the external face of the suite abutting the balcony.

# Suite 4

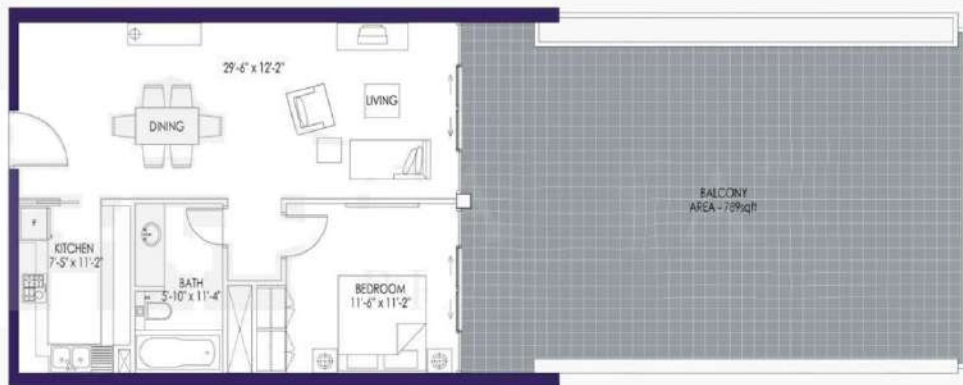


1 BEDROOM + ROOM  
5th - 35th FLOOR  
ASPECT = SOUTH EAST FACING

UNIT AREA: 981sqft  
BALCONY AREA: 316sqft  
TOTAL AREA: 1297sqft

- Notes:
- All room dimensions are imperial and measured to structural elements and exclude wall finishes and construction tolerances.
  - All dimensions have been provided by consultant architects.
  - All materials, dimensions and drawings are approximate. Information subject to change without notice.
  - Actual suite area may vary from stated area. Drawings not to scale D&O. The developer reserves the right to make revisions.
  - Calculation of suite area is measured as the area bounded by the center lines of demising or party walls separating one unit from another unit, the exterior walls, and the exterior surface of the corridor wall enclosing and abutting the unit.
  - Calculation of Balcony Area is measured as the area bounded by the center lines of demising or party walls separating one unit from another unit, the outermost face of the enclosing guard and the external face of the suite abutting the balcony.

# Suite 6



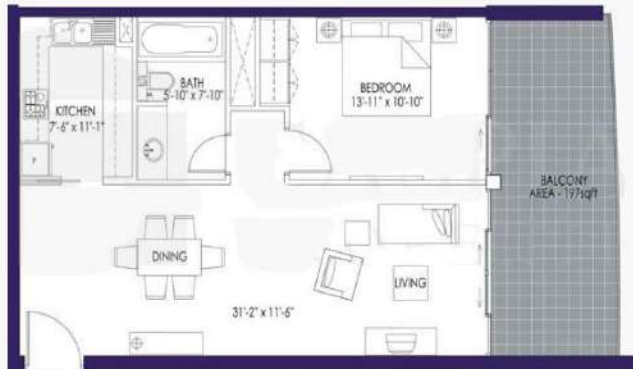
1 BEDROOM  
4th FLOOR  
ASPECT = SOUTH EAST FACING

UNIT AREA: 748sqft  
BALCONY AREA: 789sqft  
TOTAL AREA: 1537sqft

#### Notes:

- All room dimensions are imperial and measured to structural elements and exclude wall finishes and construction tolerances.
- All dimensions have been provided by consultant architects.
- All materials, dimensions and drawings are approximate. Information subject to change without notice.
- Actual suite area may vary from stated area. Drawings not to scale E&E.O. The developer reserves the right to make revisions.
- Calculation of suite area is measured as the area bounded by the center lines of demising or party walls separating one unit from another unit, the exterior walls, and the exterior surface of the corridor wall enclosing and abutting the unit.
- Calculation of Balcony Area is measured as the area bounded by the center lines of demising or party walls separating one unit from another unit, the outermost face of the enclosing guard and the external face of the suite abutting the balcony.

# Suite 5



1 BEDROOM  
5th - 35th FLOOR  
ASPECT = SOUTH EAST FACING

UNIT AREA: 739sqft  
BALCONY AREA: 197sqft  
TOTAL AREA: 936sqft

#### Notes:

- All room dimensions are imperial and measured to structural elements and exclude wall finishes and construction tolerances.
- All dimensions have been provided by consultant architects.
- All materials, dimensions and drawings are approximate. Information subject to change without notice.
- Actual suite area may vary from stated area. Drawings not to scale B&EO. The developer reserves the right to make revisions.
- Calculation of suite area is measured as the area bounded by the center lines of demising or party walls separating one unit from another unit, the exterior walls, and the exterior surface of the corridor wall enclosing and abutting the unit.
- Calculation of Balcony Area is measured as the area bounded by the center lines of demising or party walls separating one unit from another unit, the outermost face of the enclosing guard and the external face of the suite abutting the balcony.

# Suite 6a



1 BEDROOM  
5th - 35th FLOOR  
ASPECT = SOUTH EAST FACING

UNIT AREA: 748sqft  
BALCONY AREA: 117sqft  
TOTAL AREA: 865sqft

- Notes:
- All room dimensions are imperial and measured to structural elements and exclude wall thickness and construction tolerances.
  - All dimensions have been provided by consultant architects.
  - All materials, dimensions and drawings are approximate. Information subject to change without notice.
  - Actual suite area may vary from stated area. Drawings not to scale EASE. The developer reserves the right to make revisions.
  - Calculation of suite area is measured as the area bounded by the center lines of demising or party walls separating one unit from another unit, the exterior walls, and the exterior surface of the corridor wall enclosing and abutting the unit.
  - Calculation of Balcony Area is measured as the area bounded by the center lines of demising or party walls separating one unit from another unit, the perimeter face of the enclosing guard and the external face of the wall abutting the balcony.



# Suite 7b



1 BEDROOM  
7th FLOOR  
ASPECT = SOUTH FACING

UNIT AREA: 880sqft  
BALCONY AREA: 524sqft  
TOTAL AREA: 1404sqft

- Notes:
- All room dimensions are imperial and measured to structural elements and exclude wall finishes and construction tolerances.
  - All dimensions have been provided by consultant architects.
  - All materials, dimensions and drawings are approximate. Information subject to change without notice.
  - Actual suite area may vary from stated area. Drawings not to scale E&O. The developer reserves the right to make revisions.
  - Calculation of suite area is measured as the area bounded by the center lines of demising or party walls separating one unit from another unit, the exterior walls, and the exterior surface of the corridor wall enclosing and abutting the unit.
  - Calculation of Balcony Area is measured as the area bounded by the center lines of demising or party walls separating one unit from another unit, the external face of the enclosing guard and the external face of the suite abutting the balcony.

# Suite 7c



1 BEDROOM  
8th - 35th FLOOR  
ASPECT = SOUTH FACING

UNIT AREA: 880sqft  
BALCONY AREA: 209sqft  
TOTAL AREA: 1089sqft

- Notes:
- All room dimensions are imperial and measured to structural elements and exclude wall finishes and construction tolerances.
  - All dimensions have been provided by consultant architects.
  - All materials, dimensions and drawings are approximate. Information subject to change without notice.
  - Actual suite area may vary from stated area. Drawings not to scale (S&O). The Developer reserves the right to make revisions.
  - Calculation of suite area is measured as the area bounded by the center lines of demising or party walls separating one unit from another unit, the exterior walls, and the exterior surface of the corridor wall enclosing and abutting the unit.
  - Calculation of Balcony Area is measured as the area bounded by the corner lines of demising or party walls separating one unit from another unit, the perimeter face of the enclosing guard and the exterior face of the suite abutting the balcony.

# Suite 9



1 BEDROOM  
4th - 35th FLOOR  
ASPECT = SOUTH WEST FACING

UNIT AREA: 465sqft  
BALCONY AREA: 78sqft  
TOTAL AREA: 543sqft

- Notes:
- All room dimensions are imperial and measured to structural elements and exclude wall finishes and construction tolerances.
  - All dimensions have been provided by consultant architects.
  - All materials, dimensions and drawings are approximate. Information subject to change without notice.
  - Actual suite areas may vary from stated areas. Drawings not to scale E&O. The Developer reserves the right to make revisions.
  - Calculation of suite area is measured as the area bounded by the center lines of demising or party walls separating one unit from another unit, the exterior walls, and the exterior surface of the corridor wall enclosing and abutting the unit.
  - Calculation of Balcony Area is measured as the area bounded by the center lines of demising or party walls separating one unit from another unit, the outermost face of the enclosing guard and the external face of the solar shading the balcony.