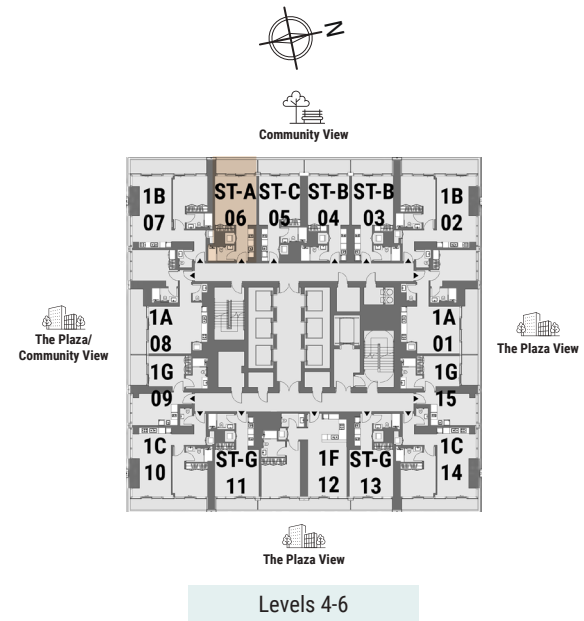


STUDIO APARTMENT
Tower A | Type A | Unit 06
Levels 4-6



Apartment Area	40.32 m ²	434 ft ²
Balcony Area	7.32 m ²	79 ft ²
Total Area	47.64 m²	513 ft²



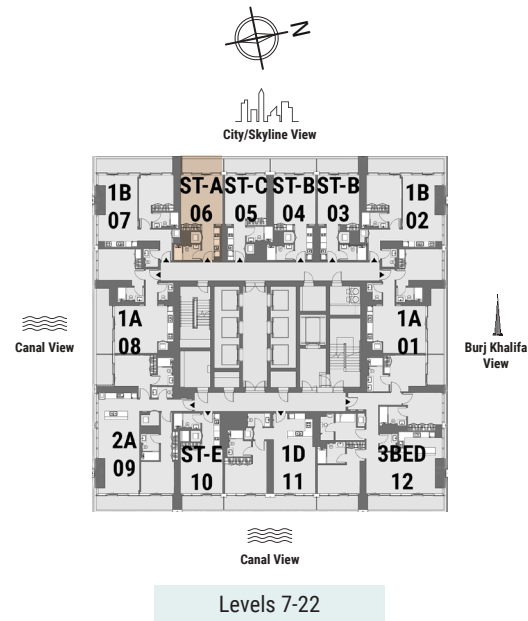
Levels 4-6

Drawings are provided by our consultants. All dimensions, features and amenities are approximate at time of printing. Actual size may vary from stated area. Drawings not to scale E & OE. The developer reserves the right to make revisions to the floor plans and any features, materials and dimensions mentioned without further notice.

STUDIO APARTMENT
 Tower A | Type A | Unit 06
 Levels 7-22



Apartment Area	40.42 m ²	435 ft ²
Balcony Area	7.33 m ²	79 ft ²
Total Area	47.75 m²	514 ft²



STUDIO APARTMENT
Tower A | Type B | Unit 03
Levels 4-6

Community View



Apartment Area	40.54 m ²	436 ft ²
Balcony Area	7.32 m ²	79 ft ²
Total Area	47.86 m²	515 ft²

Community View

The Plaza/
Community View

The Plaza View

The Plaza View

Levels 4-6

Drawings are provided by our consultants. All dimensions, features and amenities are approximate at time of printing. Actual size may vary from stated area. Drawings not to scale E & OE. The developer reserves the right to make revisions to the floor plans and any features, materials and dimensions mentioned without further notice.

STUDIO APARTMENT
Tower A | Type B | Unit 03
Levels 7-22

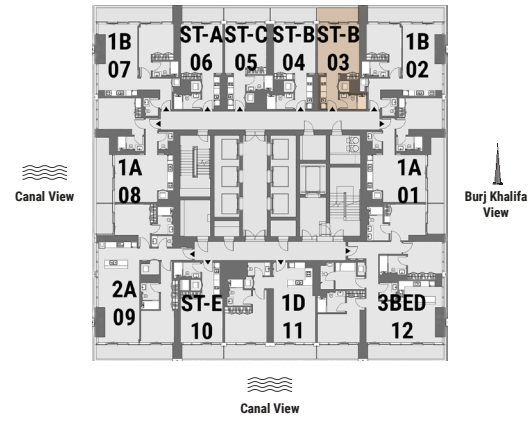
City/Skyline View



Apartment Area	40.65 m ²	438 ft ²
Balcony Area	7.32 m ²	78 ft ²
Total Area	47.97 m²	516 ft²



City/Skyline View



Levels 7-22

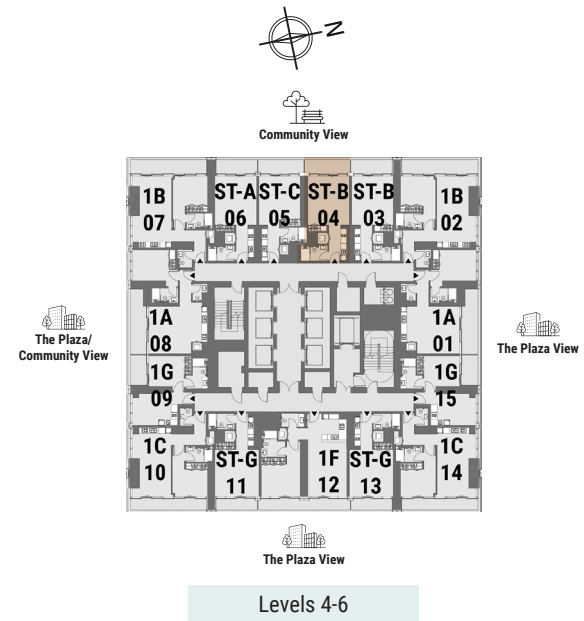
Drawings are provided by our consultants. All dimensions, features and amenities are approximate at time of printing. Actual size may vary from stated area. Drawings not to scale E & OE. The developer reserves the right to make revisions to the floor plans and any features, materials and dimensions mentioned without further notice.

STUDIO APARTMENT
 Tower A | Type B | Unit 04
 Levels 4-6

Community View



Apartment Area	40.92 m ²	440 ft ²
Balcony Area	7.37 m ²	80 ft ²
Total Area	48.29 m²	520 ft²



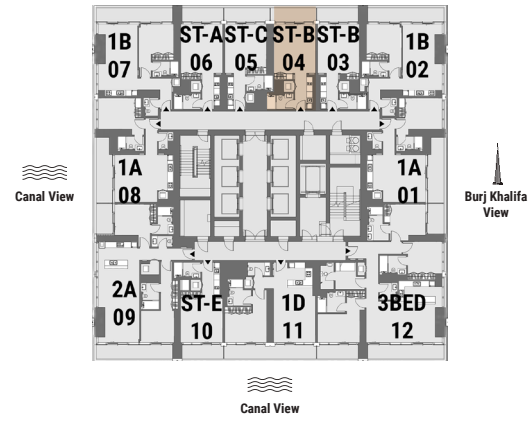
STUDIO APARTMENT
 Tower A | Type B | Unit 04
 Levels 7-22

City/Skyline View



Apartment Area	40.95 m ²	441 ft ²
Balcony Area	7.36 m ²	79 ft ²
Total Area	48.31 m²	520 ft²

City/Skyline View



Levels 7-22

Drawings are provided by our consultants. All dimensions, features and amenities are approximate at time of printing. Actual size may vary from stated area. Drawings not to scale E & OE. The developer reserves the right to make revisions to the floor plans and any features, materials and dimensions mentioned without further notice.

STUDIO APARTMENT
Tower A | Type C | Unit 05
Levels 4-6

Community View



Apartment Area	39.13 m ²	421 ft ²
Balcony Area	7.36 m ²	79 ft ²
Total Area	46.49 m²	500 ft²

Community View

The Plaza/
Community View

The Plaza View

The Plaza View

Levels 4-6

STUDIO APARTMENT

Tower A | Type C | Unit 05
Levels 7-22

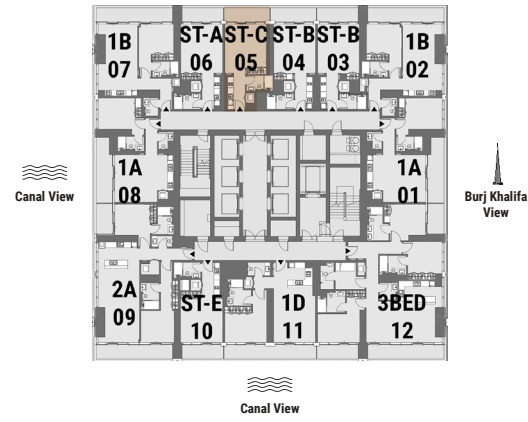
City/Skyline View



Apartment Area	39.12 m ²	421 ft ²
Balcony Area	7.37 m ²	79 ft ²
Total Area	46.49 m²	500 ft²



City/Skyline View

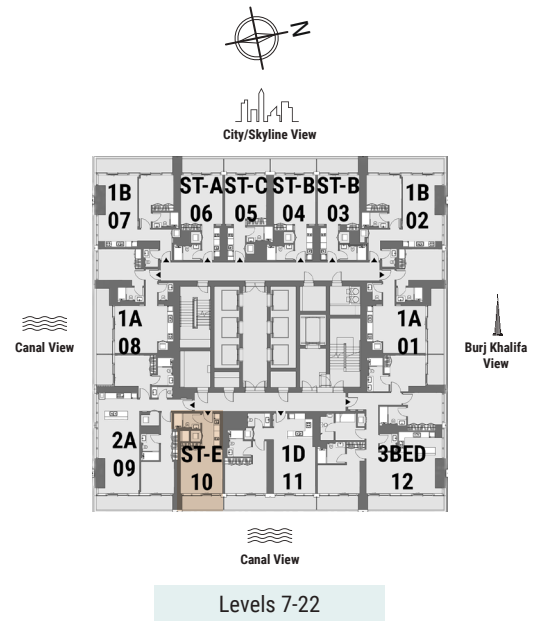


Levels 7-22




Canal View

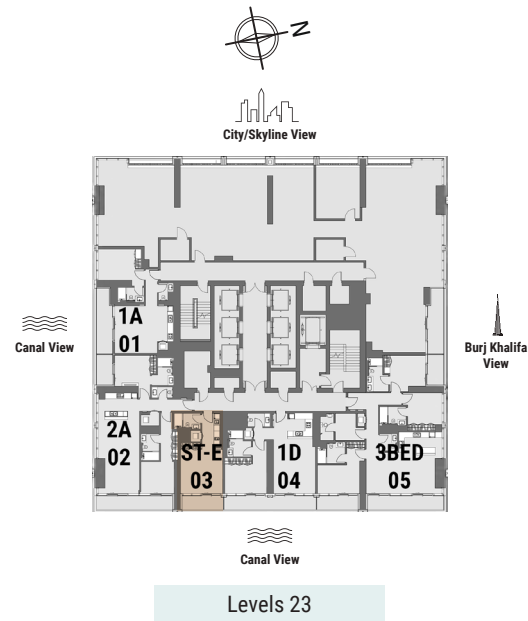
Apartment Area	38.43 m ²	414 ft ²
Balcony Area	7.32 m ²	78 ft ²
Total Area	45.75 m²	492 ft²






Canal View

Apartment Area	38.34 m ²	413 ft ²
Balcony Area	7.27 m ²	78 ft ²
Total Area	45.61 m²	491 ft²



Levels 23

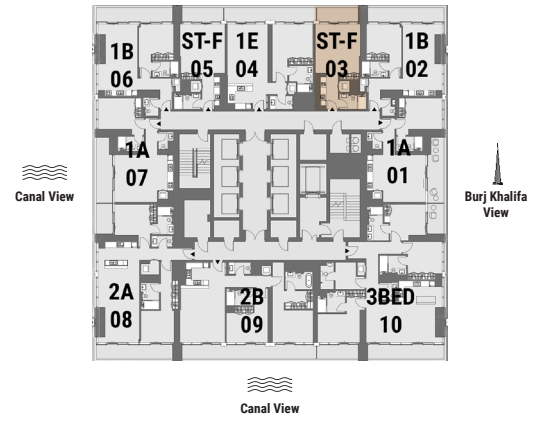

City/Skyline View



Apartment Area	41.69 m ²	449 ft ²
Balcony Area	7.32 m ²	79 ft ²
Total Area	49.01 m²	528 ft²




City/Skyline View



Levels 24-47

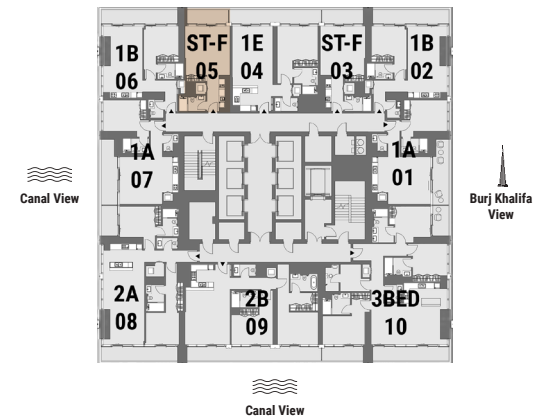
City/Skyline View



Apartment Area	41.7 m ²	449 ft ²
Balcony Area	7.32 m ²	79 ft ²
Total Area	49.02 m²	528 ft²



City/Skyline View

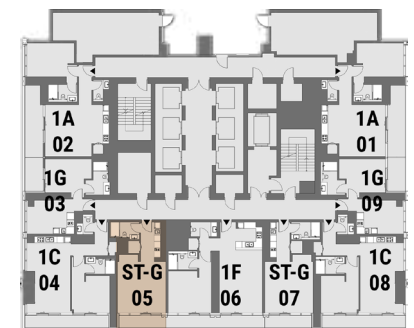


Levels 24-47



The Plaza View

Apartment Area	41.17 m ²	443 ft ²
Balcony Area	5.82 m ²	63 ft ²
Total Area	46.99 m²	506 ft²



The Plaza View



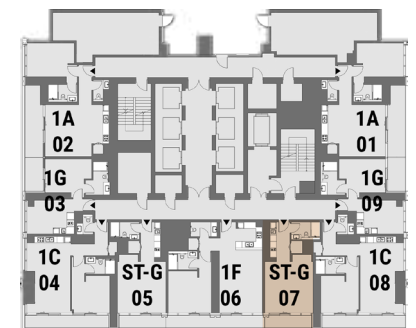
The Plaza View

Podium 2



The Plaza View

Apartment Area	41.18 m ²	443 ft ²
Balcony Area	5.82 m ²	63 ft ²
Total Area	47 m²	506 ft²



The Plaza View



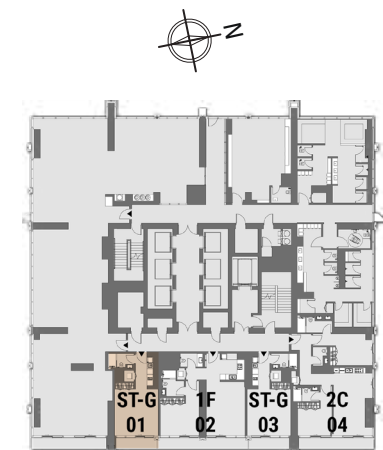
The Plaza View

Podium 2



The Plaza View

Apartment Area	41.07 m ²	442 ft ²
Balcony Area	5.85 m ²	63 ft ²
Total Area	46.92 m²	505 ft²



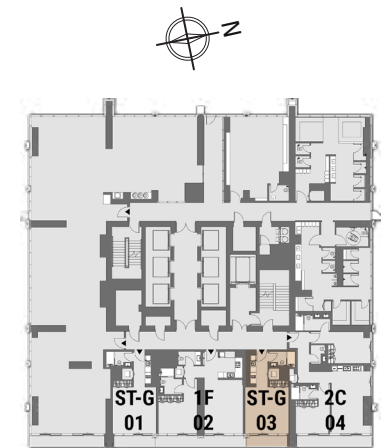
The Plaza View

Podium 3



The Plaza View

Apartment Area	41.01 m ²	441 ft ²
Balcony Area	5.85 m ²	63 ft ²
Total Area	46.86 m²	504 ft²



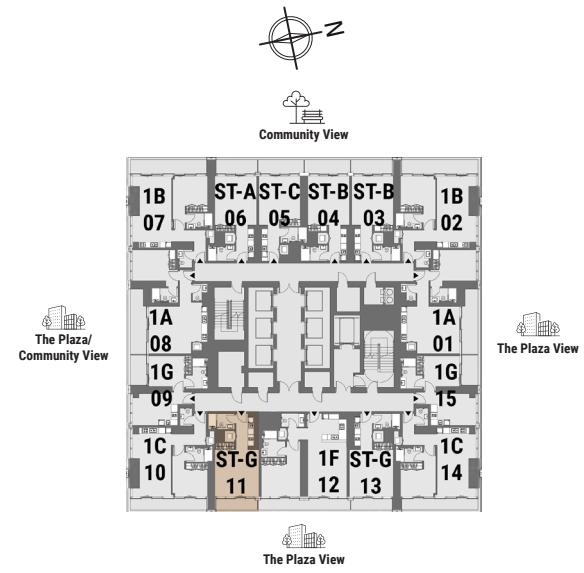
The Plaza View

Podium 3



The Plaza View

Apartment Area	40.76 m ²	439 ft ²
Balcony Area	5.94 m ²	64 ft ²
Total Area	46.70 m²	503 ft²

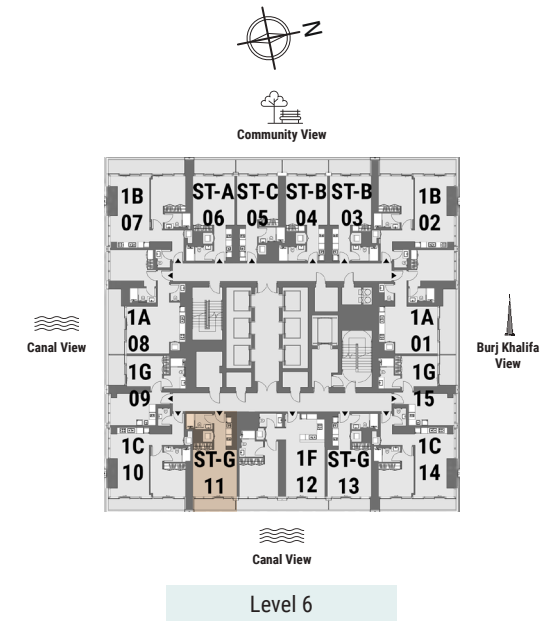


Levels 4-5




Canal View

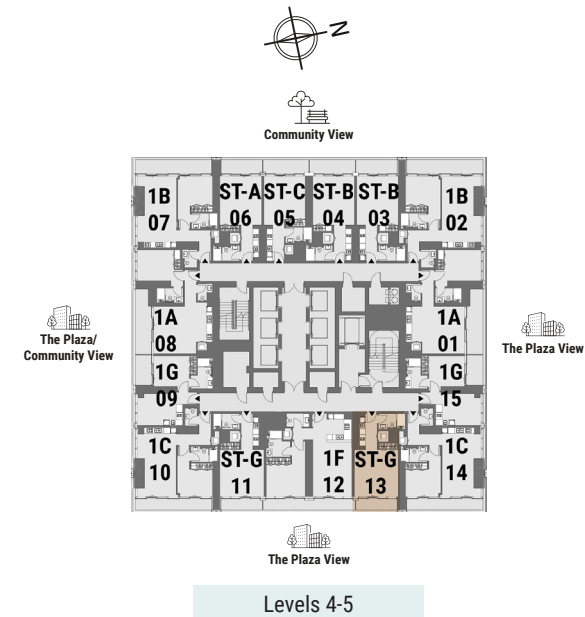
Apartment Area	40.76 m ²	439 ft ²
Balcony Area	5.94 m ²	64 ft ²
Total Area	46.70 m²	503 ft²





The Plaza View

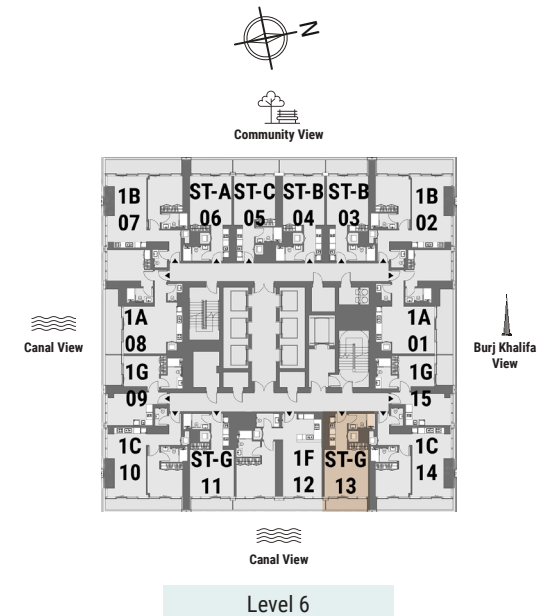
Apartment Area	40.77 m ²	439 ft ²
Balcony Area	5.94 m ²	64 ft ²
Total Area	46.71 m²	503 ft²





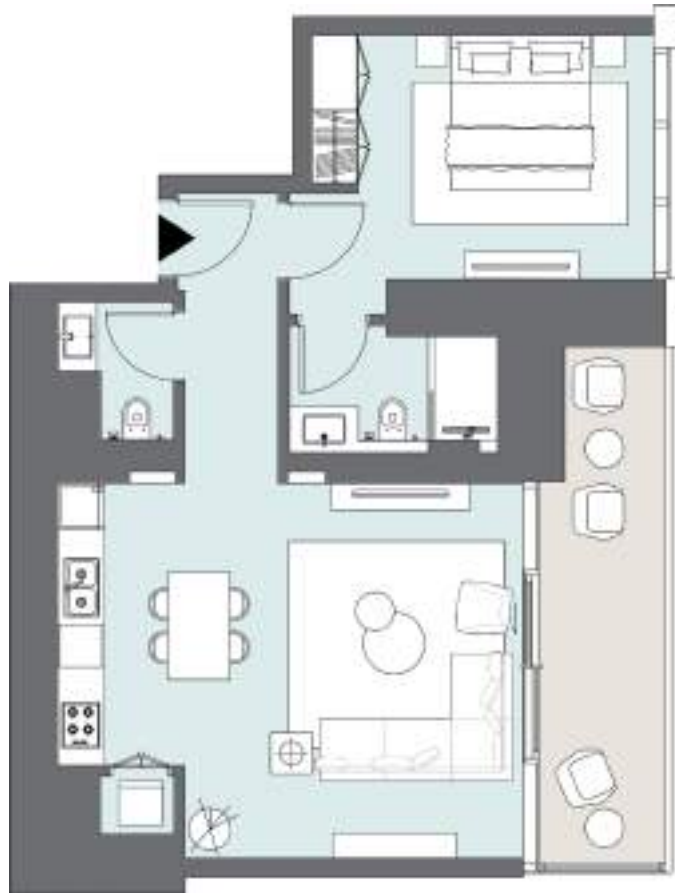

Canal View

Apartment Area	40.77 m ²	439 ft ²
Balcony Area	5.94 m ²	64 ft ²
Total Area	46.71 m²	503 ft²

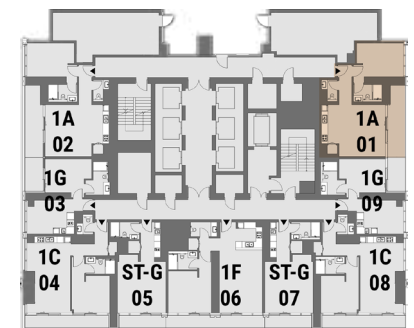


ONE BEDROOM

Tower A | Type A | Unit 01
Podium 2



The Plaza View



The Plaza View

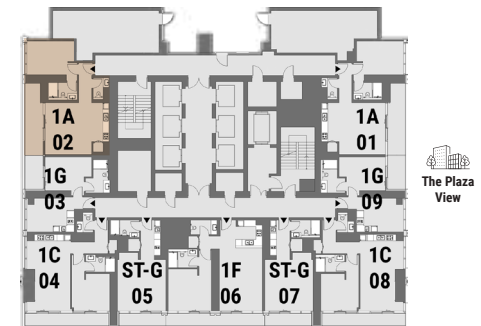
The Plaza View

Podium 2

Apartment Area	65.08 m ²	701 ft ²
Balcony Area	12.08 m ²	130 ft ²
Total Area	77.16 m²	831 ft²

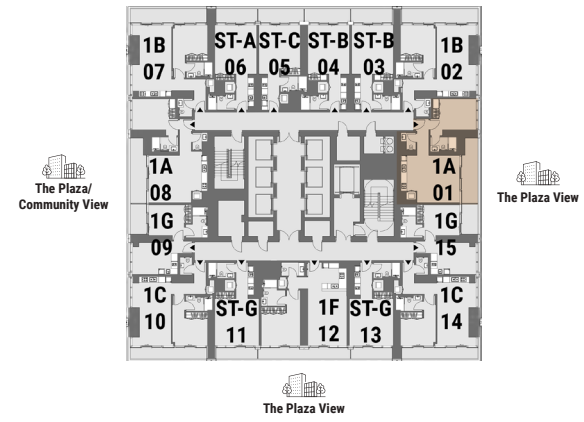
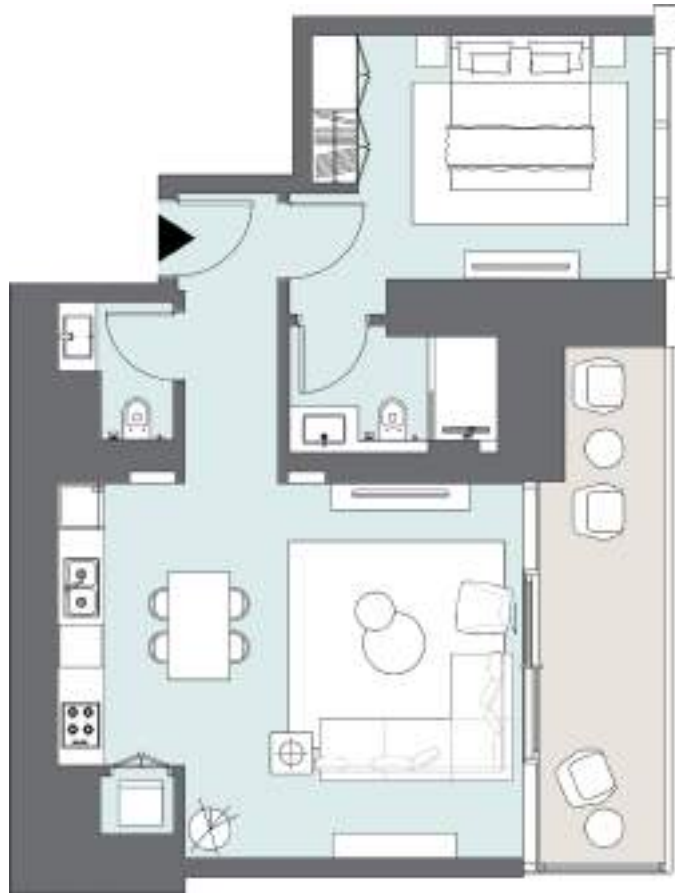


Apartment Area	65.04 m ²	700 ft ²
Balcony Area	12.03 m ²	130 ft ²
Total Area	77.07 m²	830 ft²



The Plaza View

Podium 2

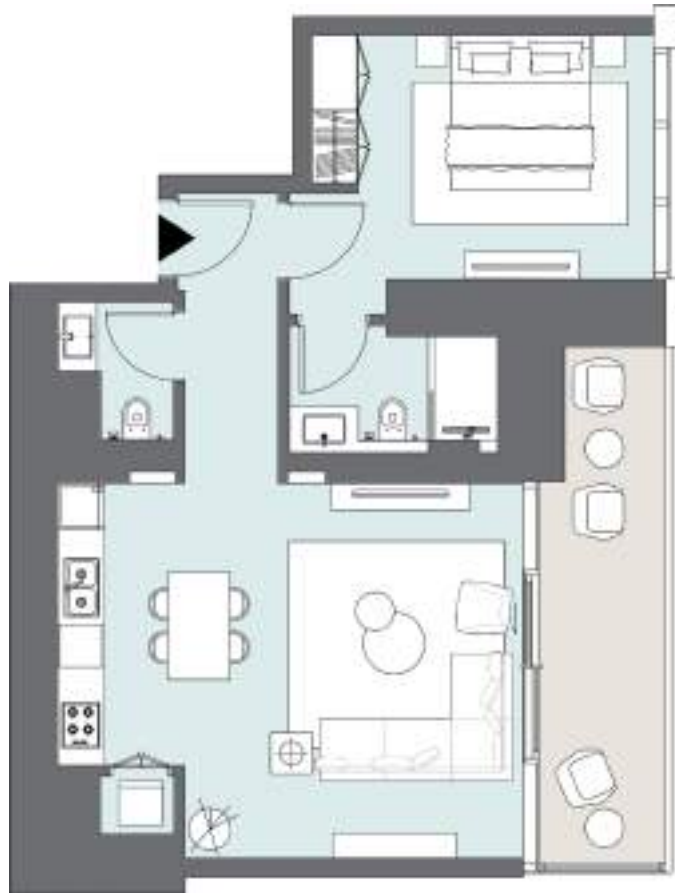


Apartment Area	65.3 m ²	703 ft ²
Balcony Area	12.11 m ²	130 ft ²
Total Area	77.41 m²	833 ft²

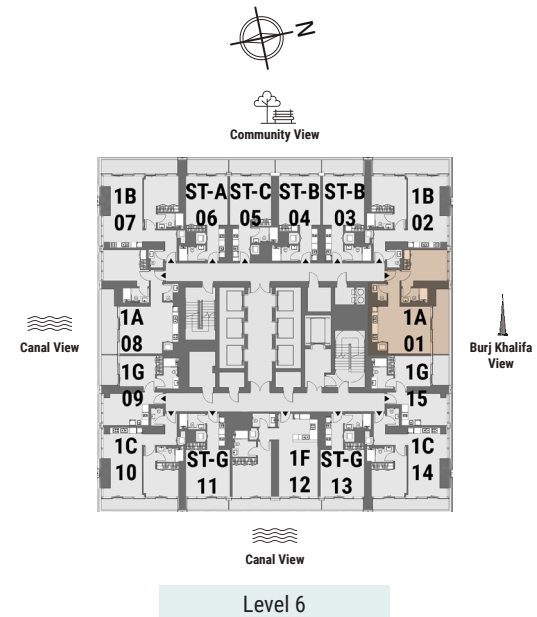
Levels 4-5

ONE BEDROOM

Tower A | Type A | Unit 01
Level 6



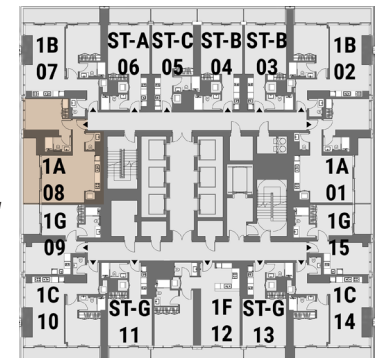
Apartment Area	65.3 m ²	703 ft ²
Balcony Area	12.11 m ²	130 ft ²
Total Area	77.41 m²	833 ft²



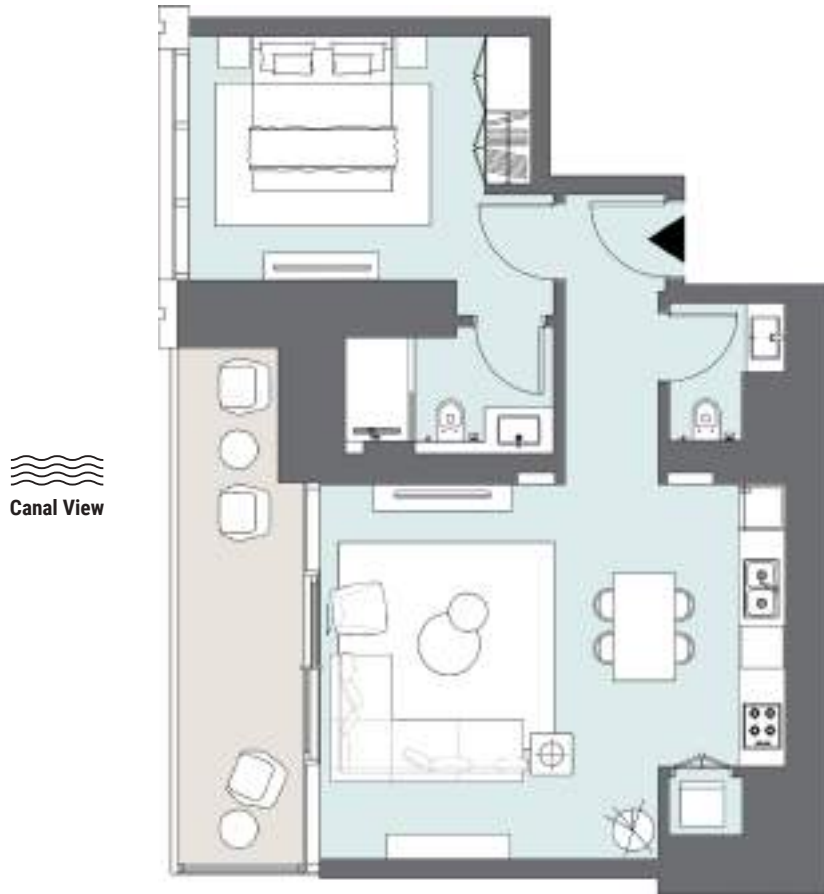
Level 6



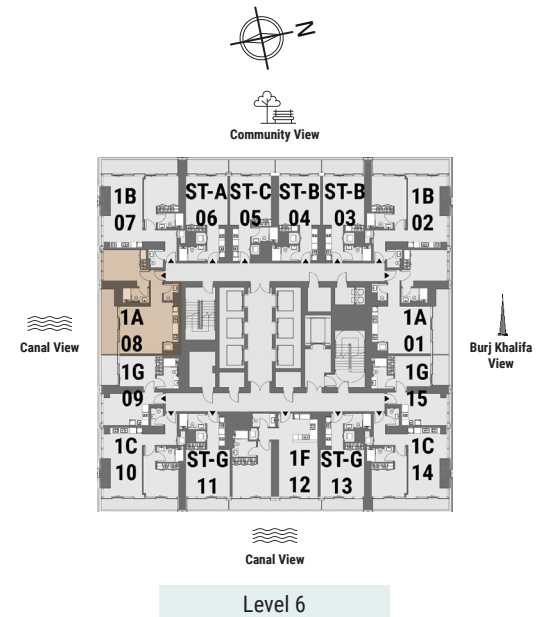
Apartment Area	65.3 m ²	703 ft ²
Balcony Area	12.11 m ²	130 ft ²
Total Area	77.41 m²	833 ft²



Levels 4-5

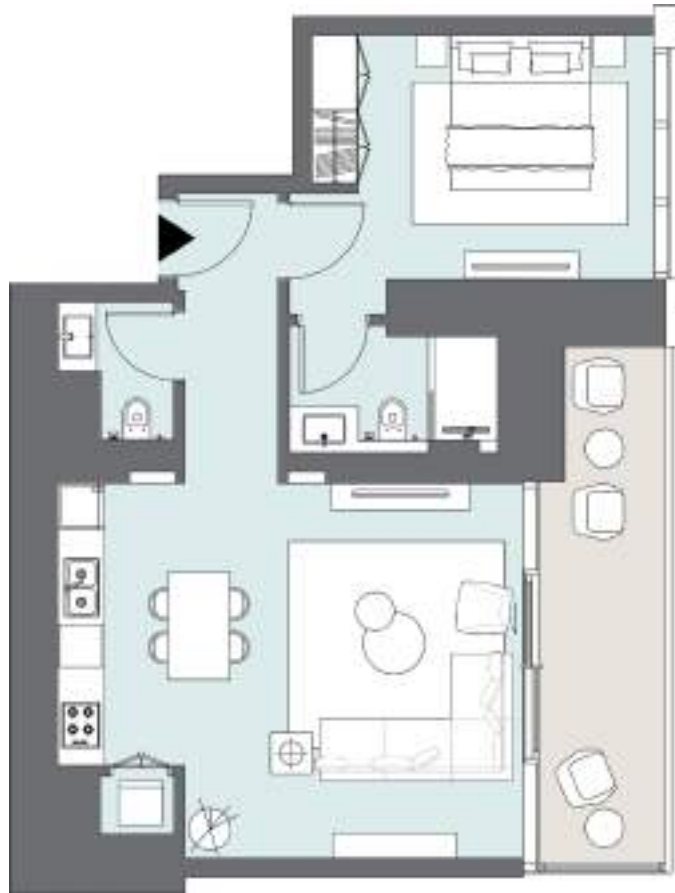


Apartment Area	65.3 m ²	703 ft ²
Balcony Area	12.11 m ²	130 ft ²
Total Area	77.41 m²	833 ft²

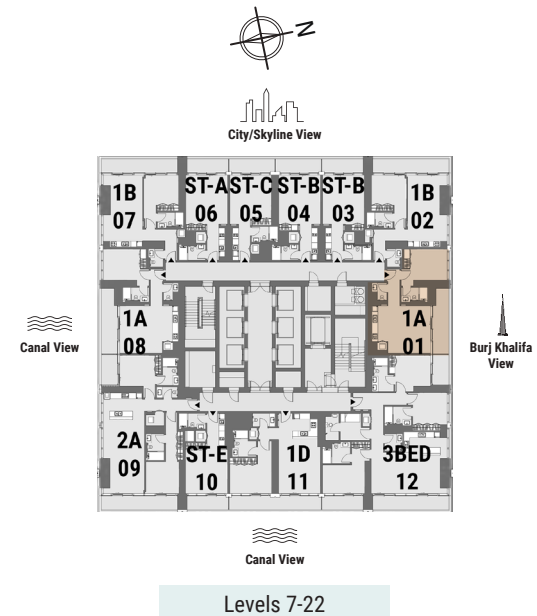


ONE BEDROOM

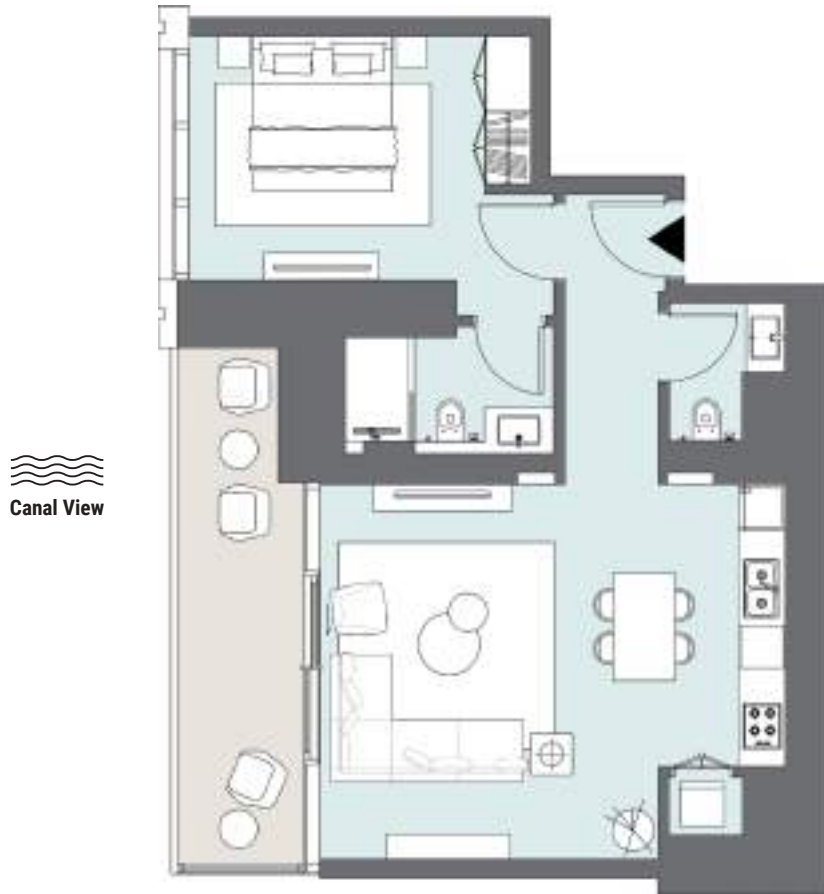
Tower A | Type A | Unit 01
Levels 7-22



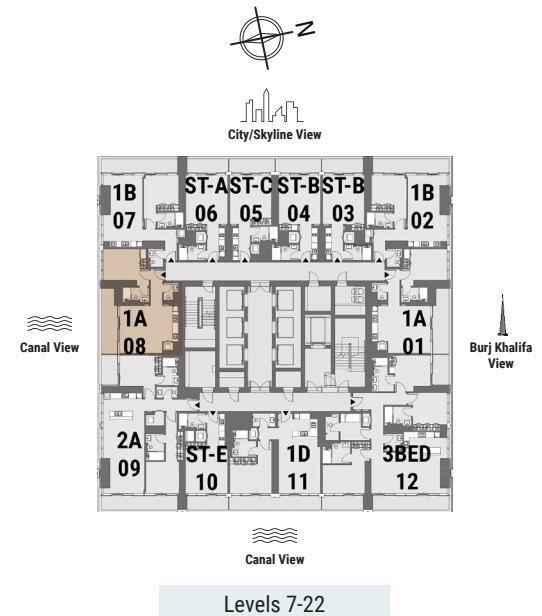
Apartment Area	65.23 m ²	702 ft ²
Balcony Area	12.08 m ²	130 ft ²
Total Area	77.31 m²	832 ft²

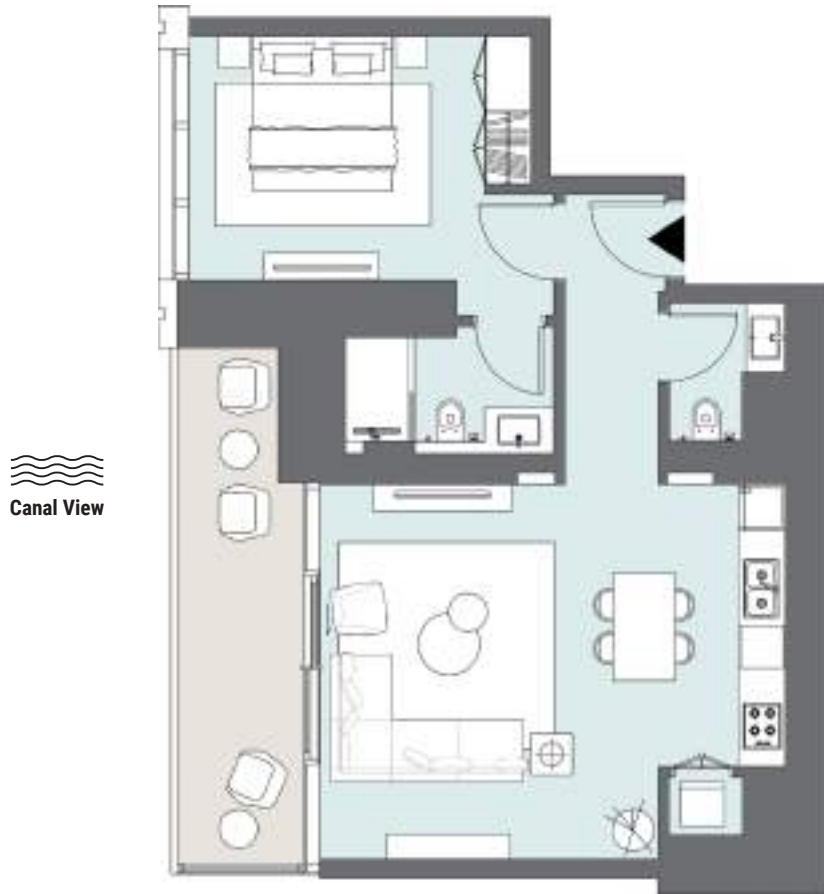


Levels 7-22

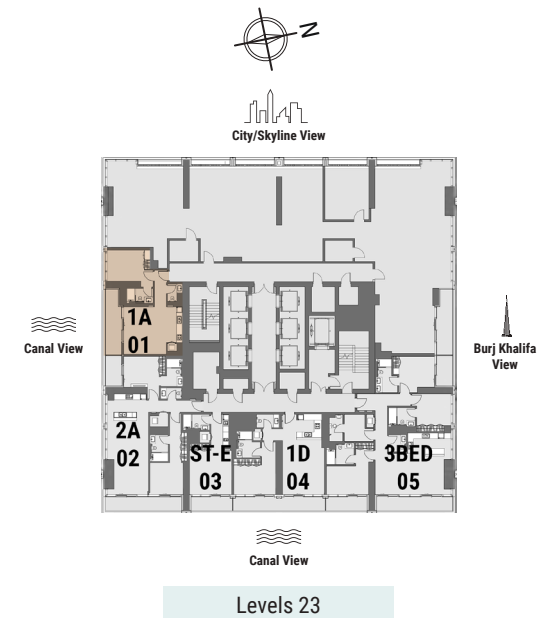


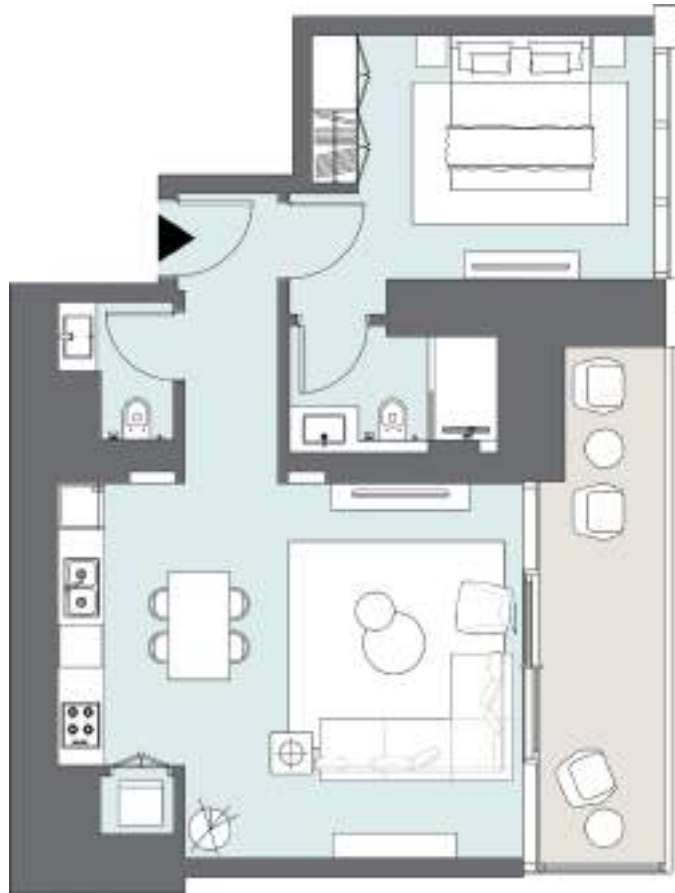
Apartment Area	65.23 m ²	702 ft ²
Balcony Area	12.08 m ²	130 ft ²
Total Area	77.31 m²	832 ft²



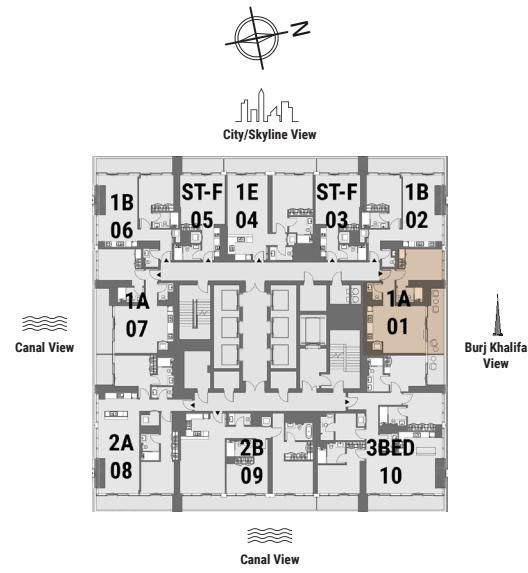


Apartment Area	65.48 m ²	705 ft ²
Balcony Area	12.04 m ²	129 ft ²
Total Area	77.52 m²	834 ft²

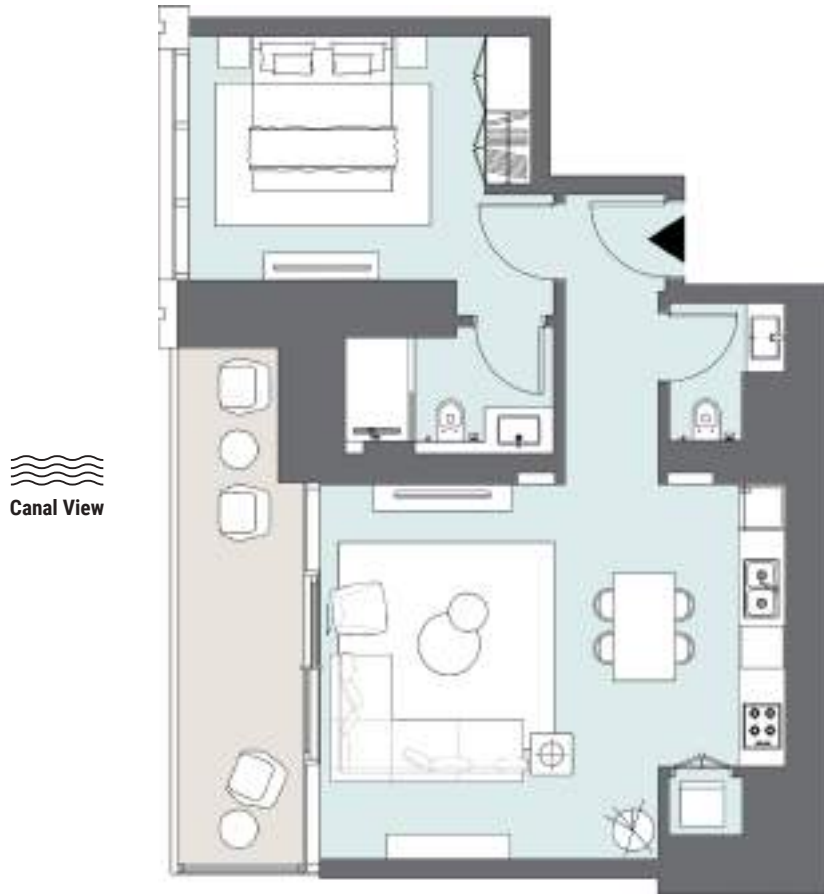




Apartment Area	65.21 m ²	702 ft ²
Balcony Area	12 m ²	129 ft ²
Total Area	77.21 m²	831 ft²

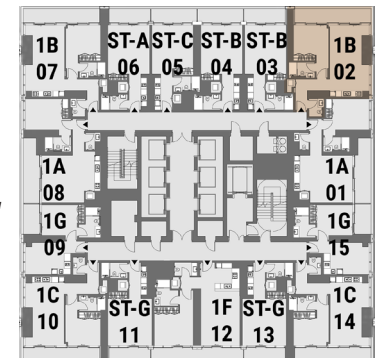


Levels 24-47



Apartment Area	65.29 m ²	703 ft ²
Balcony Area	12 m ²	129 ft ²
Total Area	77.29 m²	832 ft²





Levels 4-5

Apartment Area	67.15 m ²	723 ft ²
Balcony Area	12.81 m ²	138 ft ²
Total Area	79.96 m²	861 ft²

ONE BEDROOM

Tower A | Type B | Unit 02
Level 6



Community View



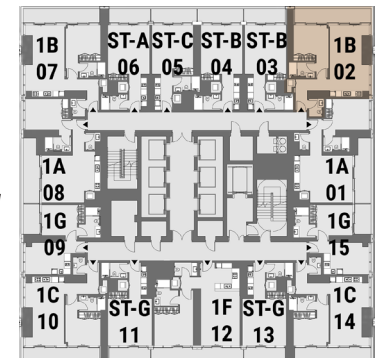
Burj Khalifa View



Community View



Canal View



Burj Khalifa View



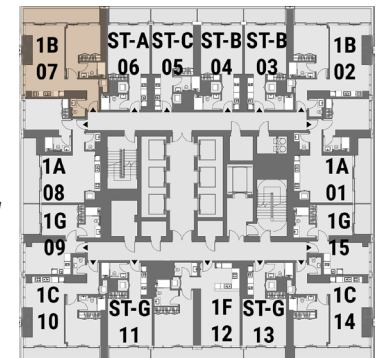
Canal View

Level 6

Apartment Area	67.15 m ²	723 ft ²
Balcony Area	12.81 m ²	138 ft ²
Total Area	79.96 m²	861 ft²



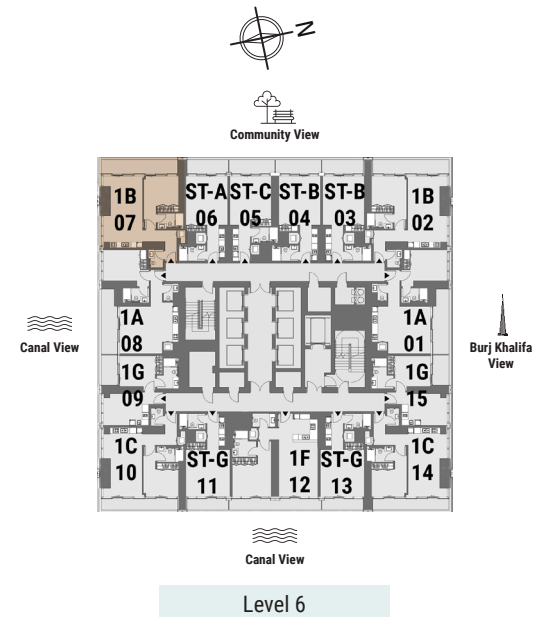
Apartment Area	67.15 m ²	723 ft ²
Balcony Area	12.81 m ²	138 ft ²
Total Area	79.96 m²	861 ft²



Levels 4-5



Apartment Area	67.15 m ²	723 ft ²
Balcony Area	12.81 m ²	138 ft ²
Total Area	79.96 m²	861 ft²

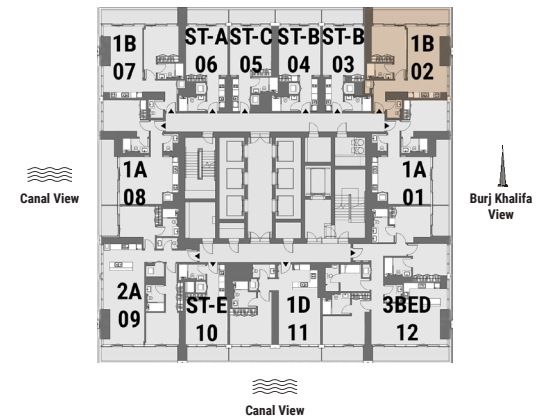


ONE BEDROOM

Tower A | Type B | Unit 02
Levels 7-22



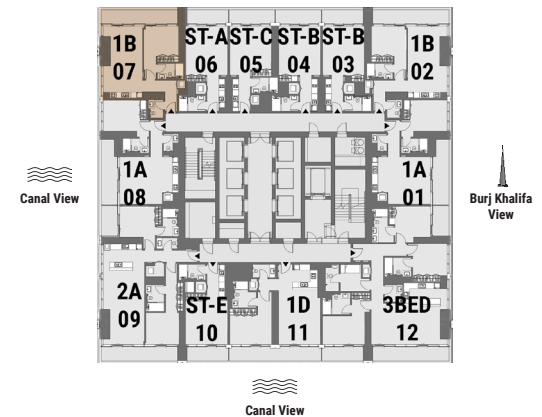
Apartment Area	67.12 m ²	722 ft ²
Balcony Area	12.81 m ²	138 ft ²
Total Area	79.93 m²	860 ft²



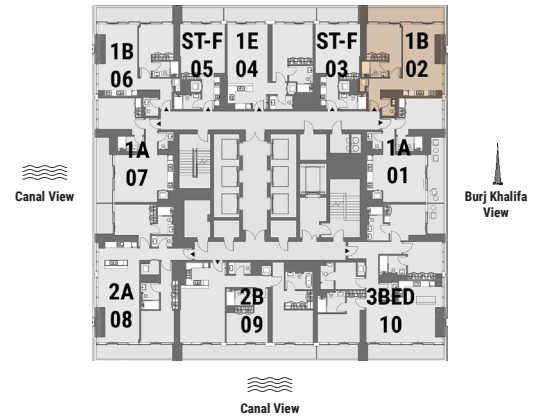
Levels 7-22



Apartment Area	67.12 m ²	722 ft ²
Balcony Area	12.8 m ²	138 ft ²
Total Area	79.92 m²	860 ft²



Levels 7-22

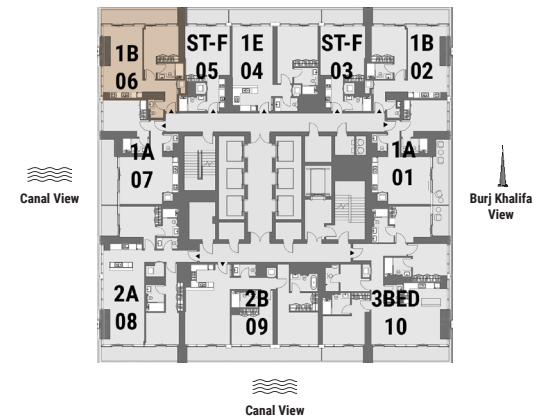


Apartment Area	67.39 m ²	725 ft ²
Balcony Area	12.8 m ²	138 ft ²
Total Area	80.19 m²	863 ft²

Levels 24-47



Apartment Area	67.38 m ²	725 ft ²
Balcony Area	12.8 m ²	138 ft ²
Total Area	80.18m²	863 ft²

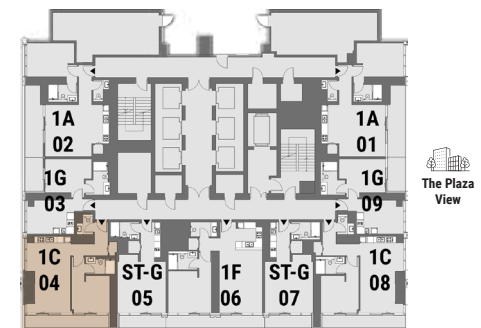


Levels 24-47



The Plaza View

Apartment Area	64.14 m ²	690 ft ²
Balcony Area	10.19 m ²	110 ft ²
Total Area	74.33 m²	800 ft²

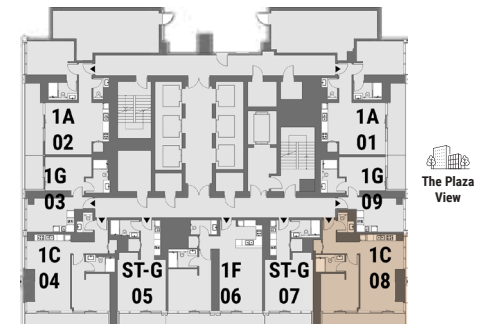


The Plaza View

Podium 2



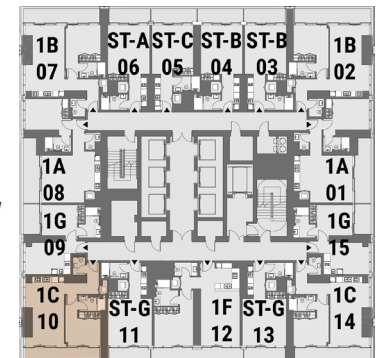
Apartment Area	64.18 m ²	691 ft ²
Balcony Area	10.19 m ²	110 ft ²
Total Area	74.37 m²	801 ft²



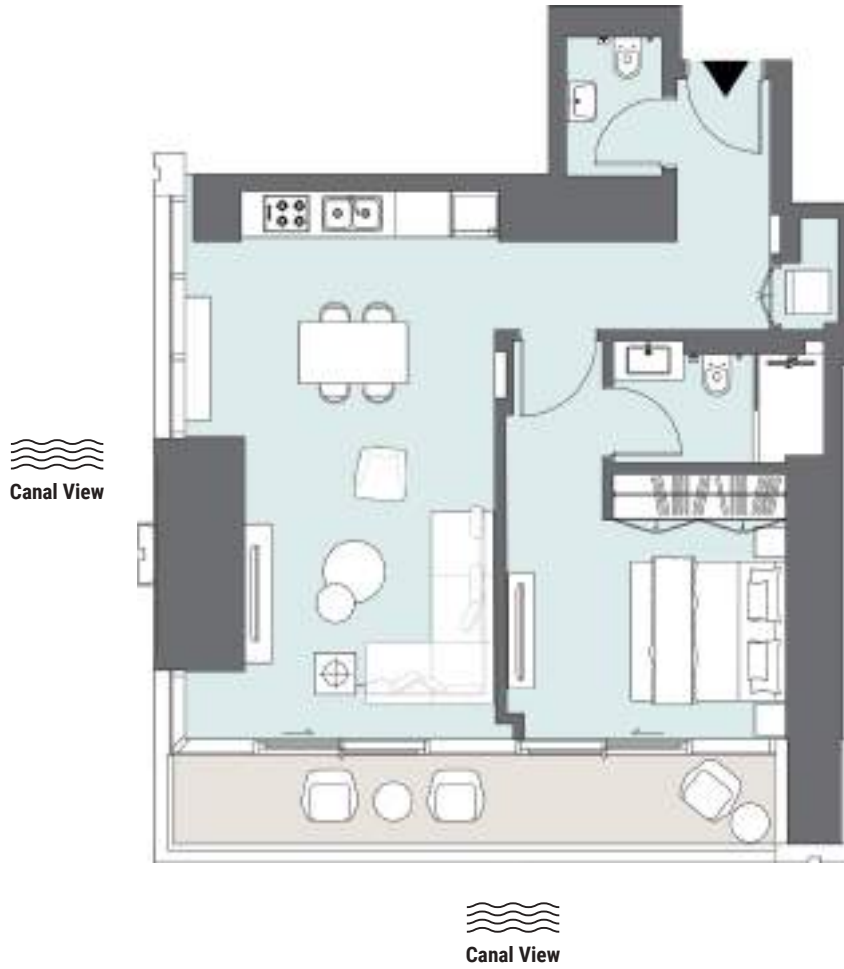
Podium 2



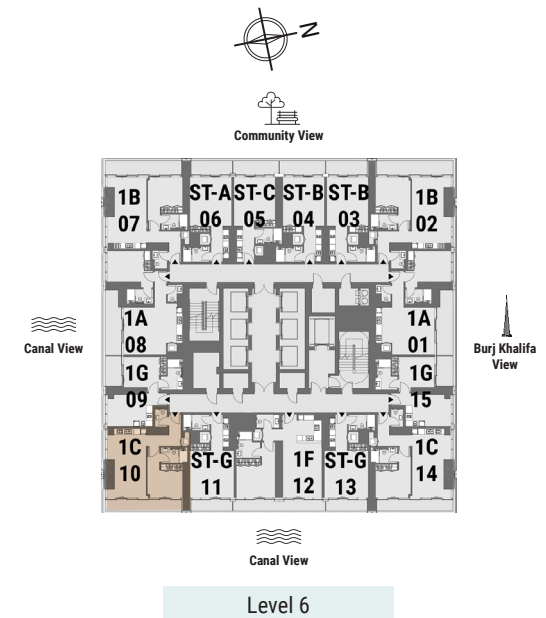
Apartment Area	64.27 m ²	692 ft ²
Balcony Area	10.36 m ²	111 ft ²
Total Area	74.63 m²	803 ft²



Levels 4-5



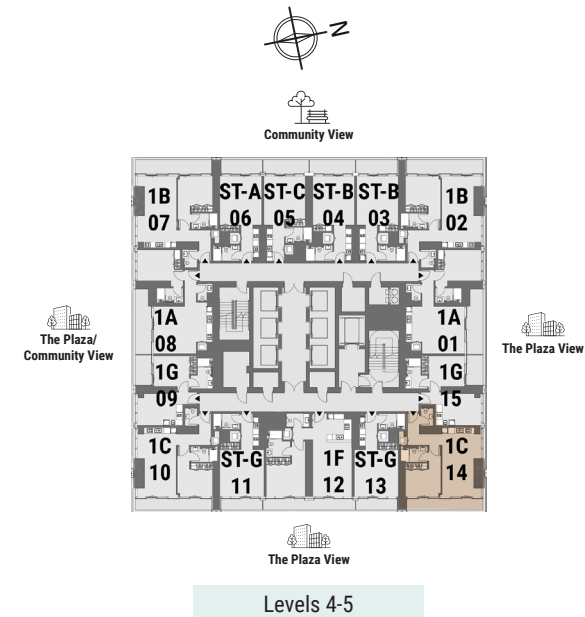
Apartment Area	64.27 m ²	692 ft ²
Balcony Area	10.36 m ²	111 ft ²
Total Area	74.63 m²	803 ft²



Level 6

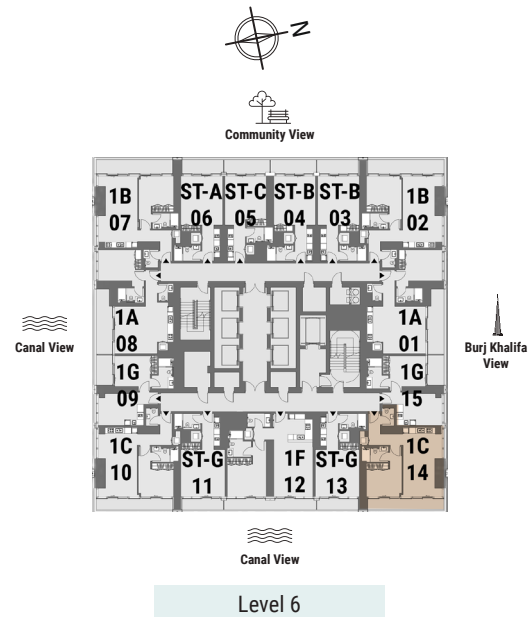


Apartment Area	64.26 m ²	692 ft ²
Balcony Area	10.34 m ²	111 ft ²
Total Area	74.60 m²	803 ft²





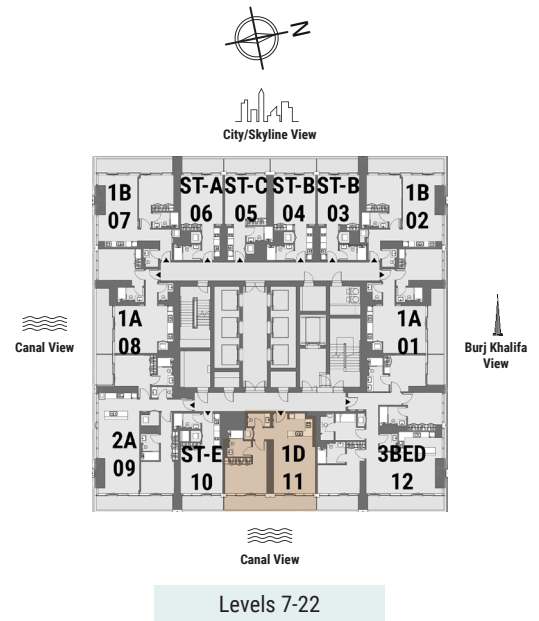
Apartment Area	64.26 m ²	692 ft ²
Balcony Area	10.34 m ²	111 ft ²
Total Area	74.60 m²	803 ft²






Canal View

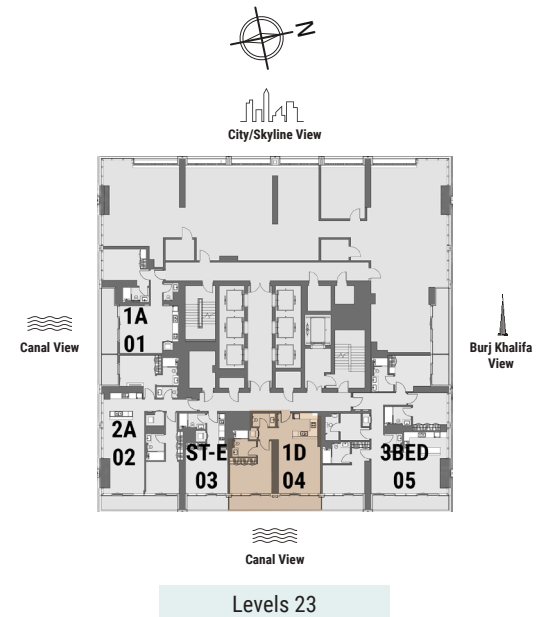
Apartment Area	75.49 m ²	813 ft ²
Balcony Area	14.74 m ²	158 ft ²
Total Area	90.23 m²	971 ft²

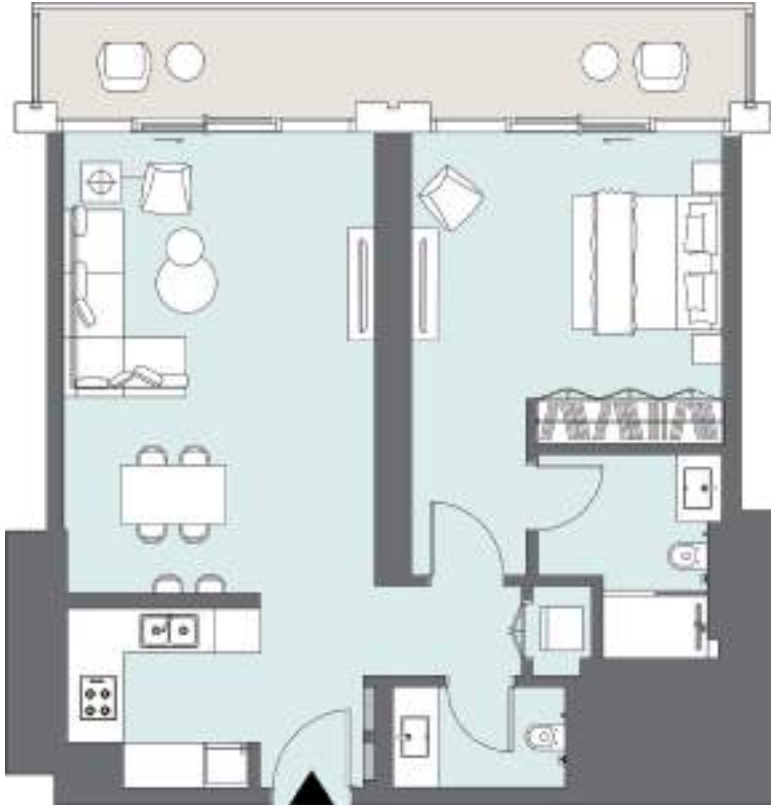




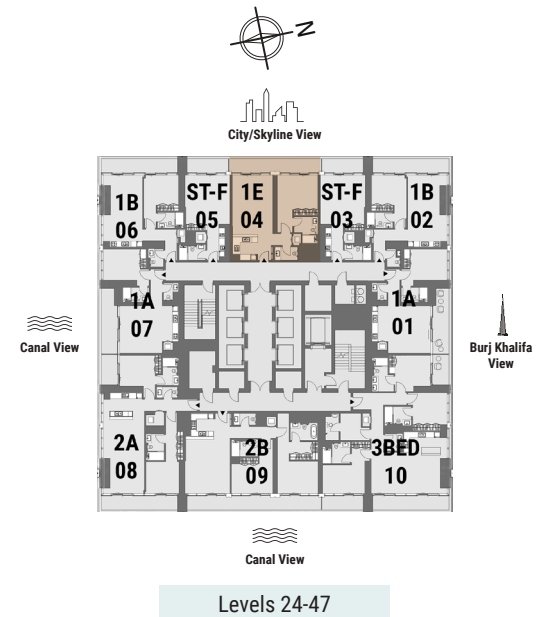

Canal View

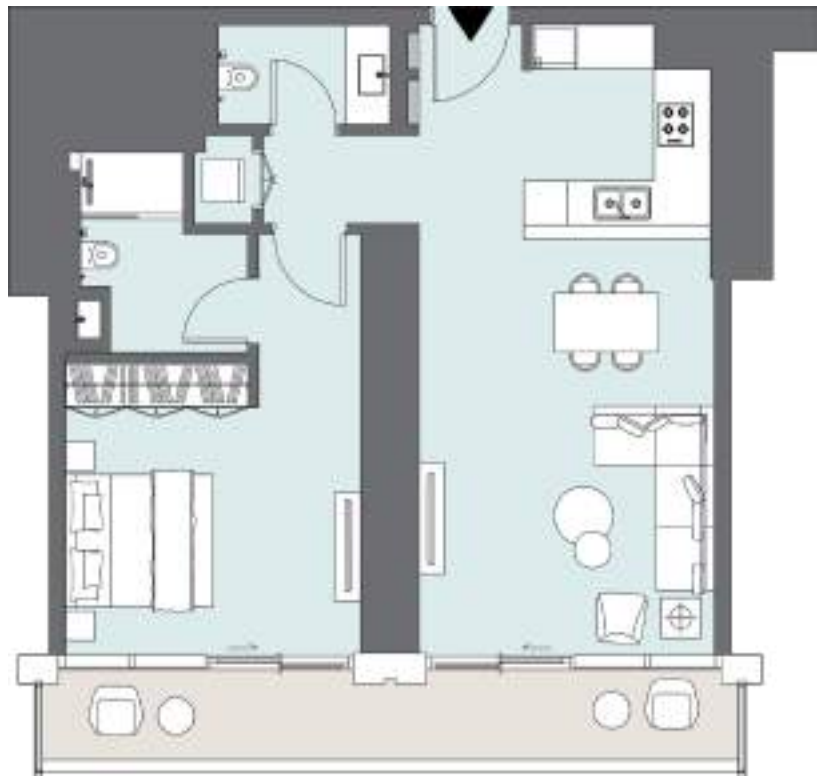
Apartment Area	75.49 m ²	813 ft ²
Balcony Area	14.64 m ²	157 ft ²
Total Area	90.13 m²	970 ft²





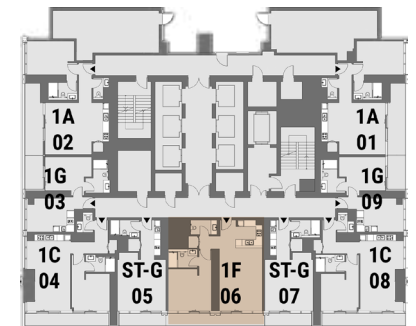
Apartment Area	77.5 m ²	834 ft ²
Balcony Area	14.72 m ²	159 ft ²
Total Area	92.22 m²	993 ft²






The Plaza View

Apartment Area	76.03 m ²	818 ft ²
Balcony Area	11.65 m ²	126 ft ²
Total Area	87.68 m²	944 ft²



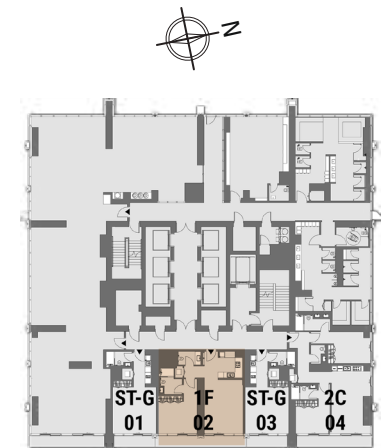

The Plaza View

Podium 2



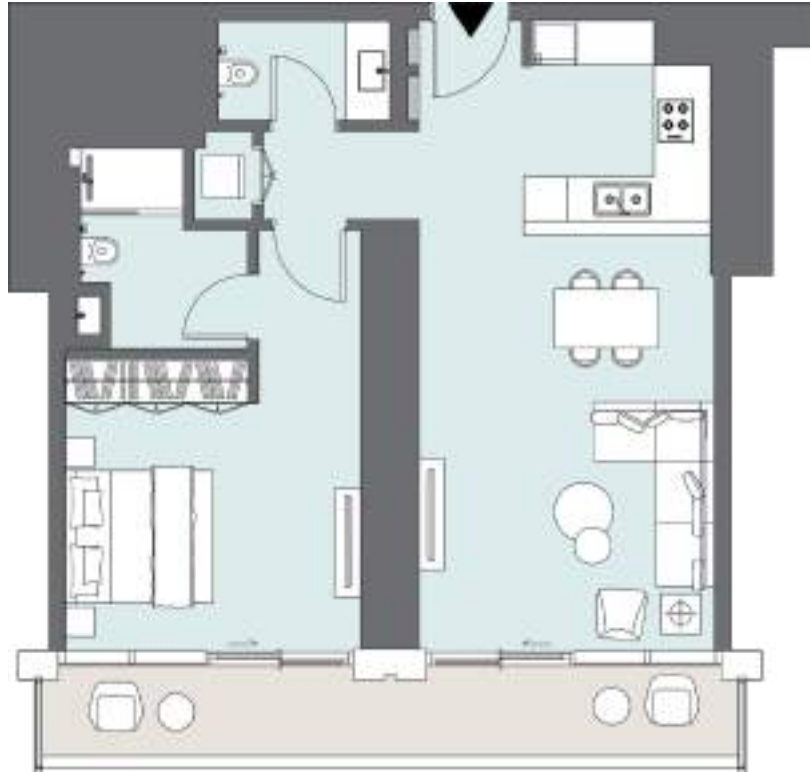
The Plaza View

Apartment Area	75.81 m ²	816 ft ²
Balcony Area	11.72 m ²	126 ft ²
Total Area	87.53 m²	942 ft²

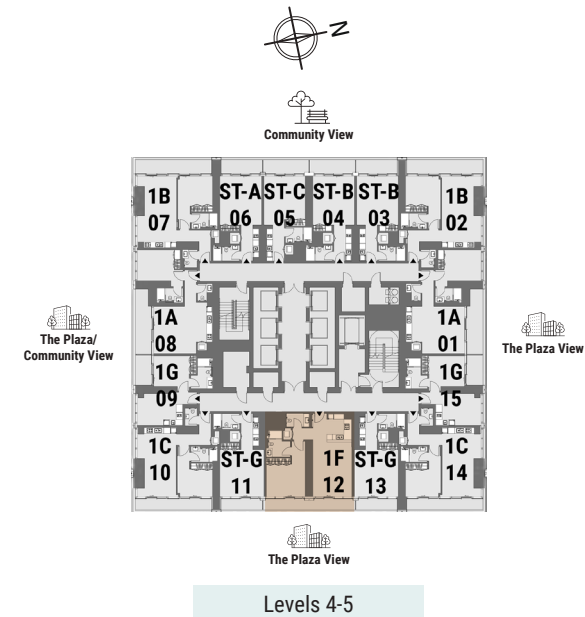


The Plaza View

Podium 3



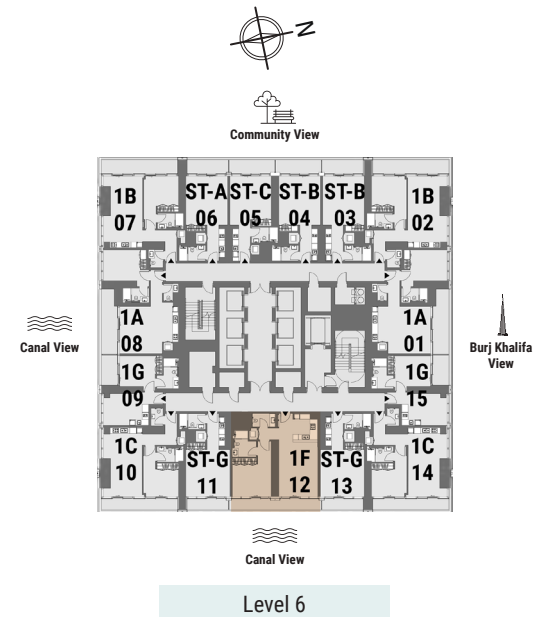
Apartment Area	75.71 m ²	815 ft ²
Balcony Area	11.86 m ²	128 ft ²
Total Area	87.57 m²	943 ft²





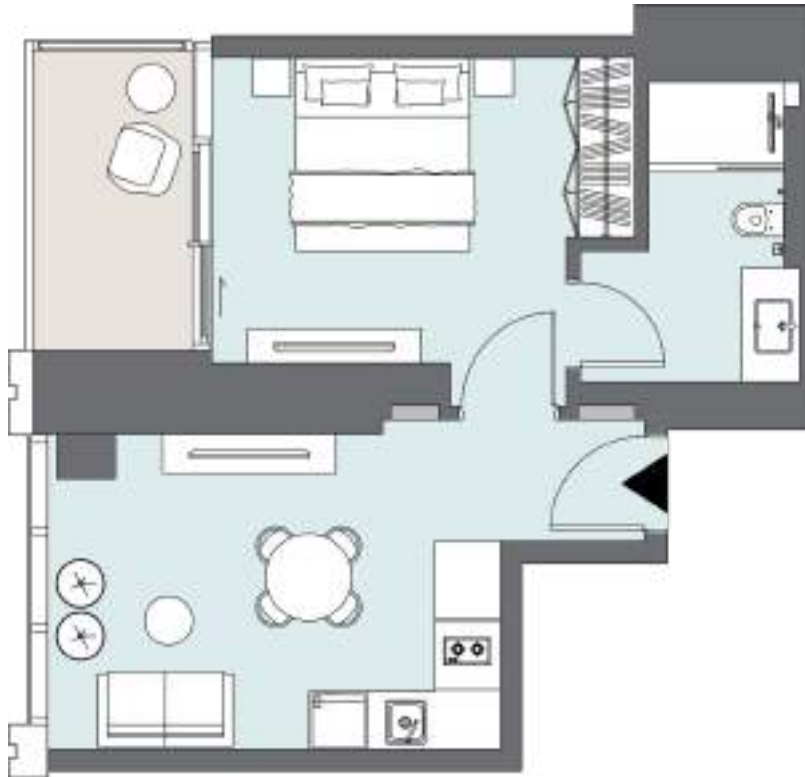

Canal View

Apartment Area	75.71 m ²	815 ft ²
Balcony Area	11.86 m ²	128 ft ²
Total Area	87.57 m²	943 ft²

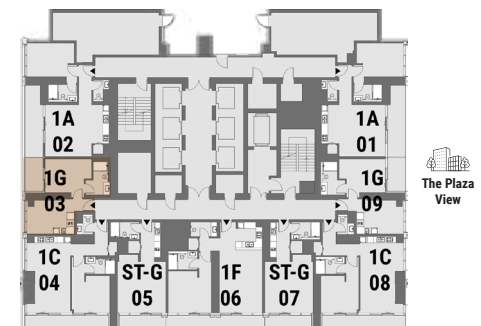


ONE BEDROOM

Tower A | Type G | Unit 03
Podium 2



Apartment Area	44.22 m ²	476 ft ²
Balcony Area	6.36 m ²	68 ft ²
Total Area	50.58 m²	544 ft²

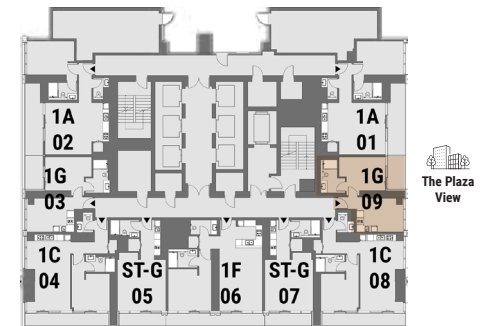


The Plaza View

Podium 2

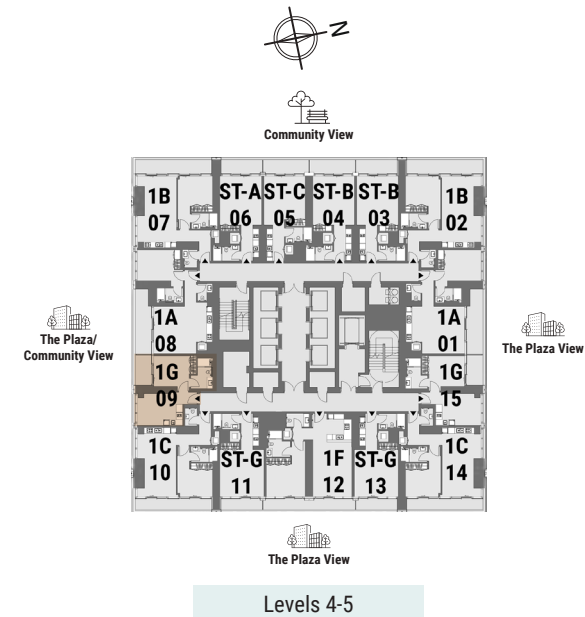
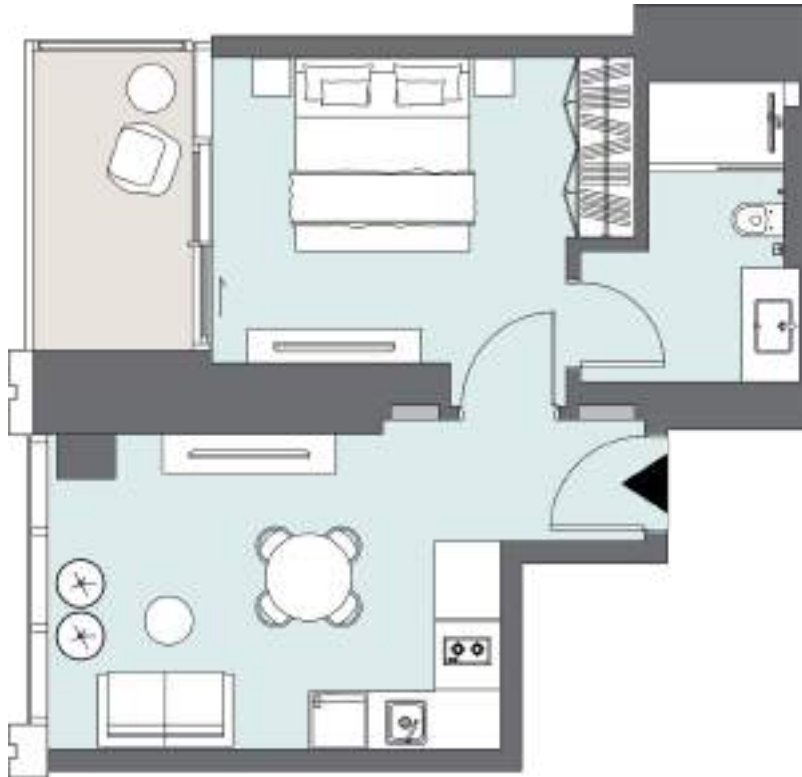
ONE BEDROOM

Tower A | Type G | Unit 09
Podium 2



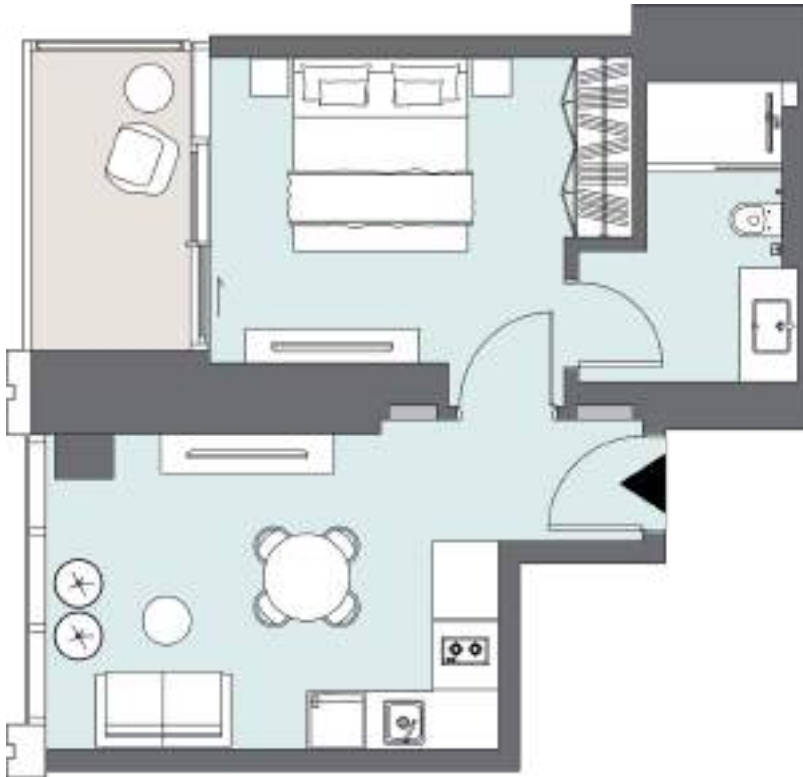
Podium 2

Apartment Area	44.65 m ²	481 ft ²
Balcony Area	6.37 m ²	68 ft ²
Total Area	51.02 m²	549 ft²



Apartment Area	44.69 m ²	481 ft ²
Balcony Area	6.39m ²	69 ft ²
Total Area	51.08 m²	550 ft²

Canal View

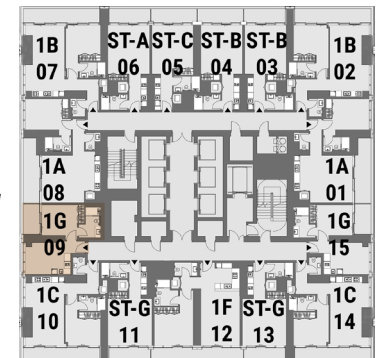


Apartment Area	44.69 m ²	481 ft ²
Balcony Area	6.39m ²	69 ft ²
Total Area	51.08 m²	550 ft²



Community View

Canal View



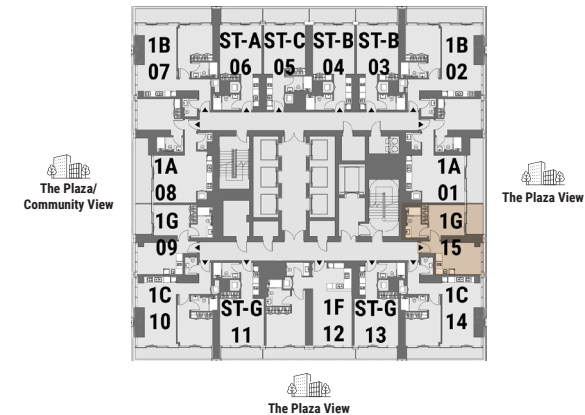
Burj Khalifa View

Canal View

Level 6

ONE BEDROOM

Tower A | Type G | Unit 15
Levels 4-5



Apartment Area	45.02 m ²	485 ft ²
Balcony Area	6.39 m ²	68 ft ²
Total Area	51.41 m²	553 ft²

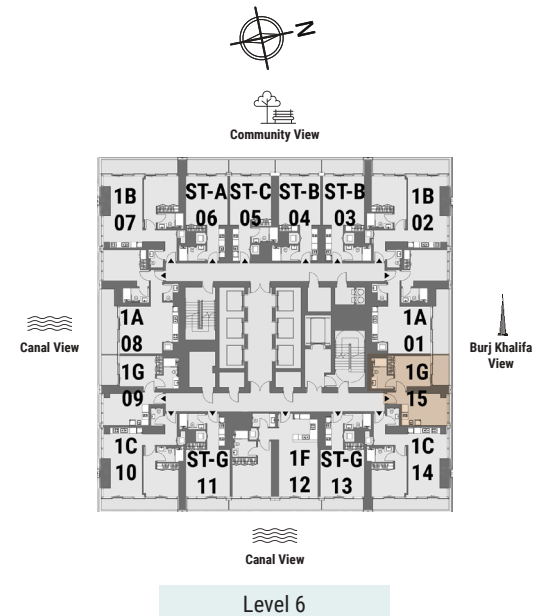
Levels 4-5

ONE BEDROOM

Tower A | Type G | Unit 15
Level 6

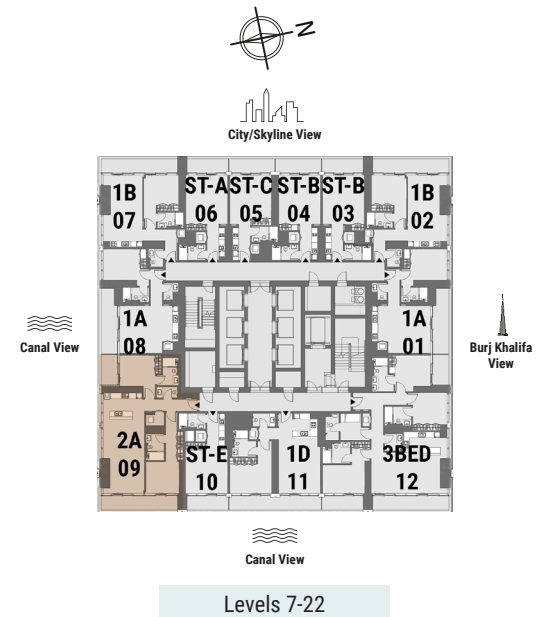


Apartment Area	45.02 m ²	485 ft ²
Balcony Area	6.39 m ²	68 ft ²
Total Area	51.41 m²	553 ft²



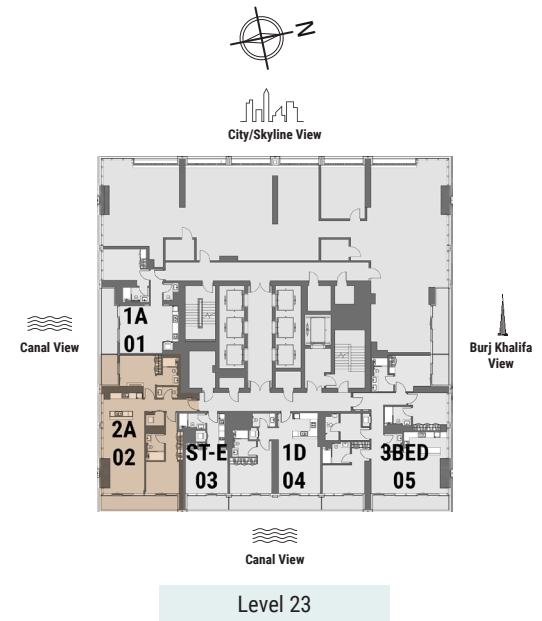


Apartment Area	114.1 m ²	1,228 ft ²
Balcony Area	19.16 m ²	206 ft ²
Total Area	133.26 m²	1,434 ft²





Apartment Area	114.42 m ²	1,232 ft ²
Balcony Area	19.11 m ²	205 ft ²
Total Area	133.53 m²	1,437 ft²

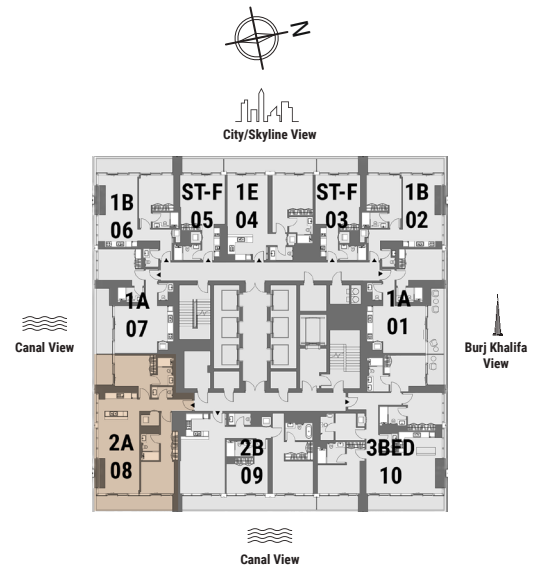




Canal View

Canal View

Apartment Area	114.33 m ²	1,231 ft ²
Balcony Area	19.06 m ²	205 ft ²
Total Area	133.39 m²	1,436 ft²



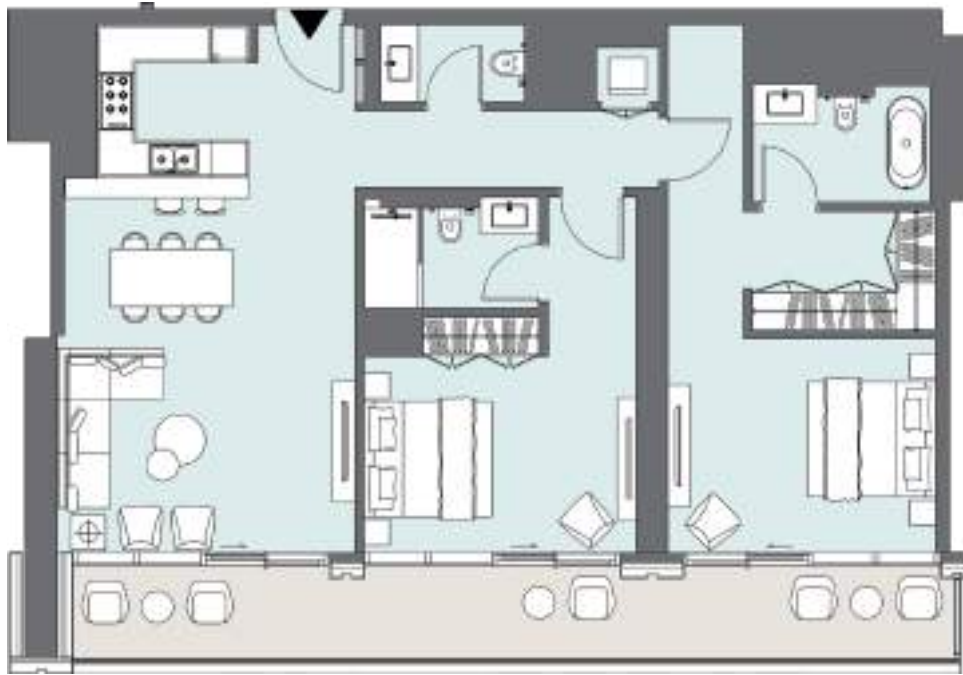
City/Skyline View

Canal View

Burj Khalifa View

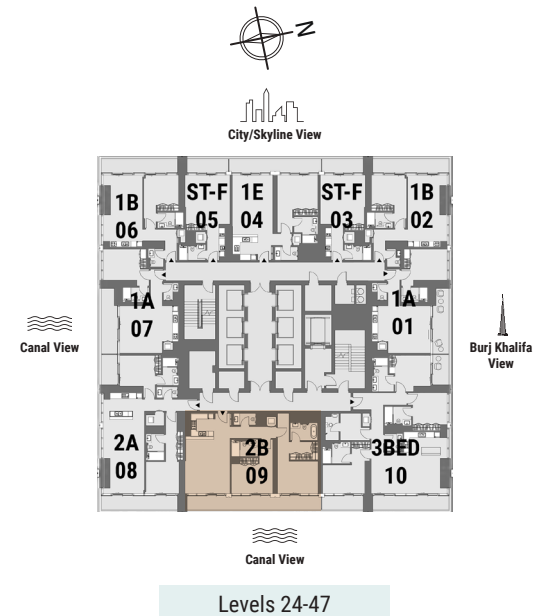
Canal View

Levels 24-47




Canal View

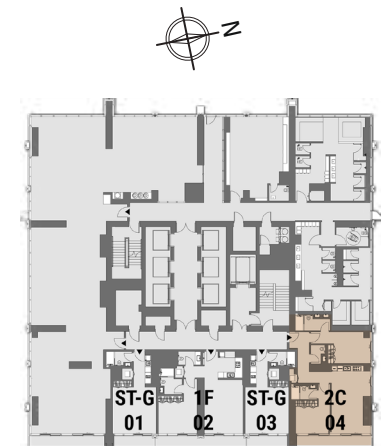
Apartment Area	112.97 m ²	1,216 ft ²
Balcony Area	22.06 m ²	237 ft ²
Total Area	135.03 m²	1,453 ft²





The Plaza View

Apartment Area	97.26 m ²	1,047ft ²
Balcony Area	33.47 m ²	360 ft ²
Total Area	130.73 m²	1,407 ft²



The Plaza View

Podium 3

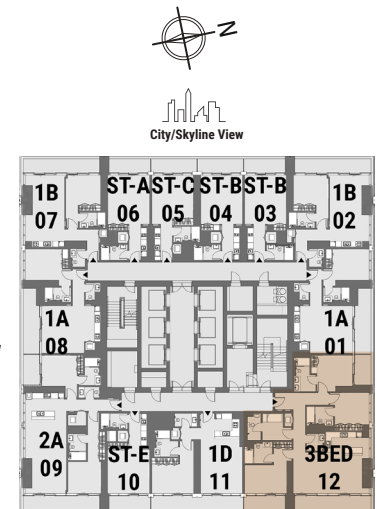
THREE BEDROOM

Tower A | Unit 12

Levels 7-22



Apartment Area	153.38 m ²	1,651 ft ²
Balcony Area	26.53 m ²	286 ft ²
Total Area	179.91 m²	1,937 ft²



Levels 7-22

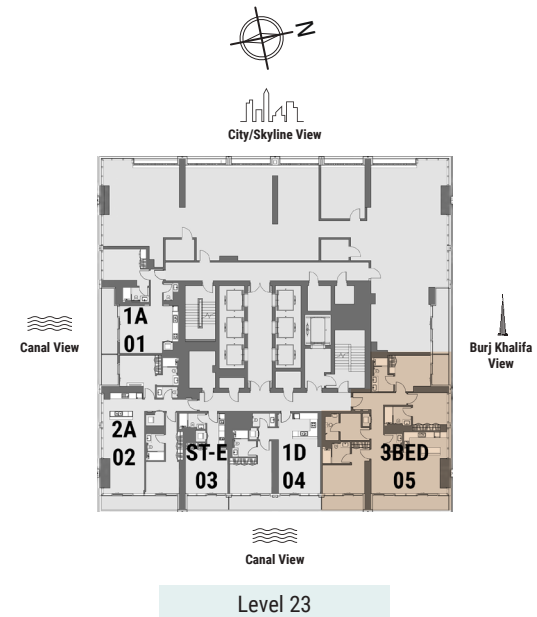
THREE BEDROOM

Tower A | Unit 05

Level 23



Apartment Area	153.5 m ²	1,652 ft ²
Balcony Area	26.49 m ²	285 ft ²
Total Area	179.99 m²	1,937 ft²



Level 23

THREE BEDROOM

Tower A | Unit 10

Levels 24-47



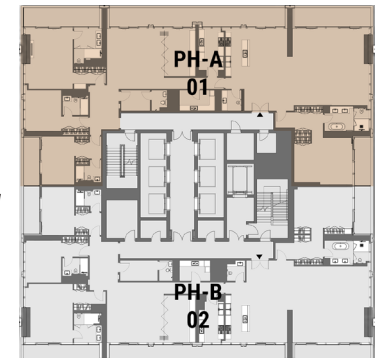
Apartment Area	154.62 m ²	1,664 ft ²
Balcony Area	26.4 m ²	284 ft ²
Total Area	181.02 m²	1,948 ft²



Levels 24-47

FOUR BEDROOM PENTHOUSE

Tower A | PH A | Unit 01
Level 51

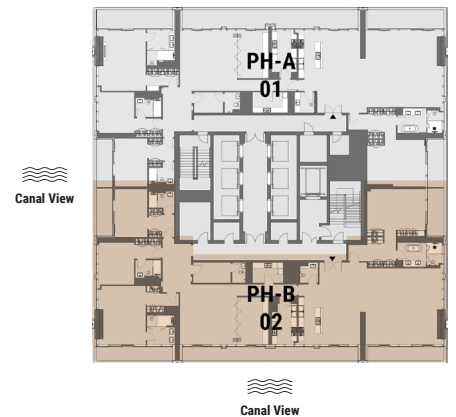


Level 51

Apartment Area	413.98 m ²	4,456 ft ²
Balcony Area	91.28 m ²	983 ft ²
Total Area	505.26 m²	5,439 ft²

FOUR BEDROOM PENTHOUSE

Tower A | PH B | Unit 02
Level 51



Canal View

Level 51

Apartment Area	414.06 m ²	4,457 ft ²
Balcony Area	73.38 m ²	790 ft ²
Total Area	487.44 m²	5,247 ft²